

PRODUCT INFORMATION PACKET

marathon[®]
Motors

Model No: 444TTFCD36528
Catalog No: 444TTFCD36528
125,1800,TEFC,444T,3/60/460

Regal and Marathon are trademarks of Regal Rexnord Corporation or one of its affiliated companies.
©2023 Regal Rexnord Corporation, All Rights Reserved. MC017097E

The logo for Regal Rexnord, featuring a stylized 'R' icon followed by the text 'RegalRexnord'.

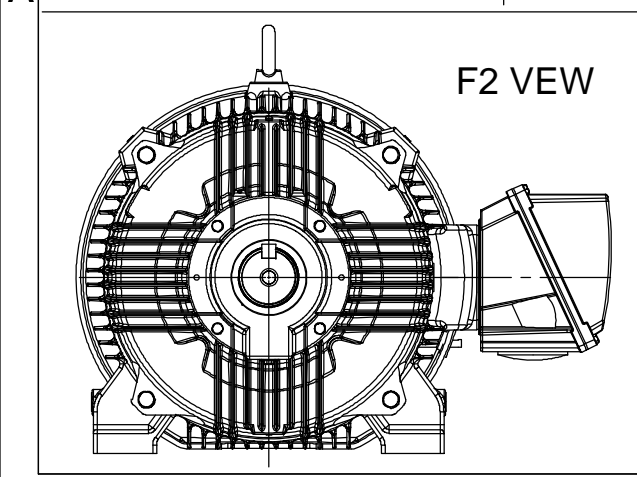
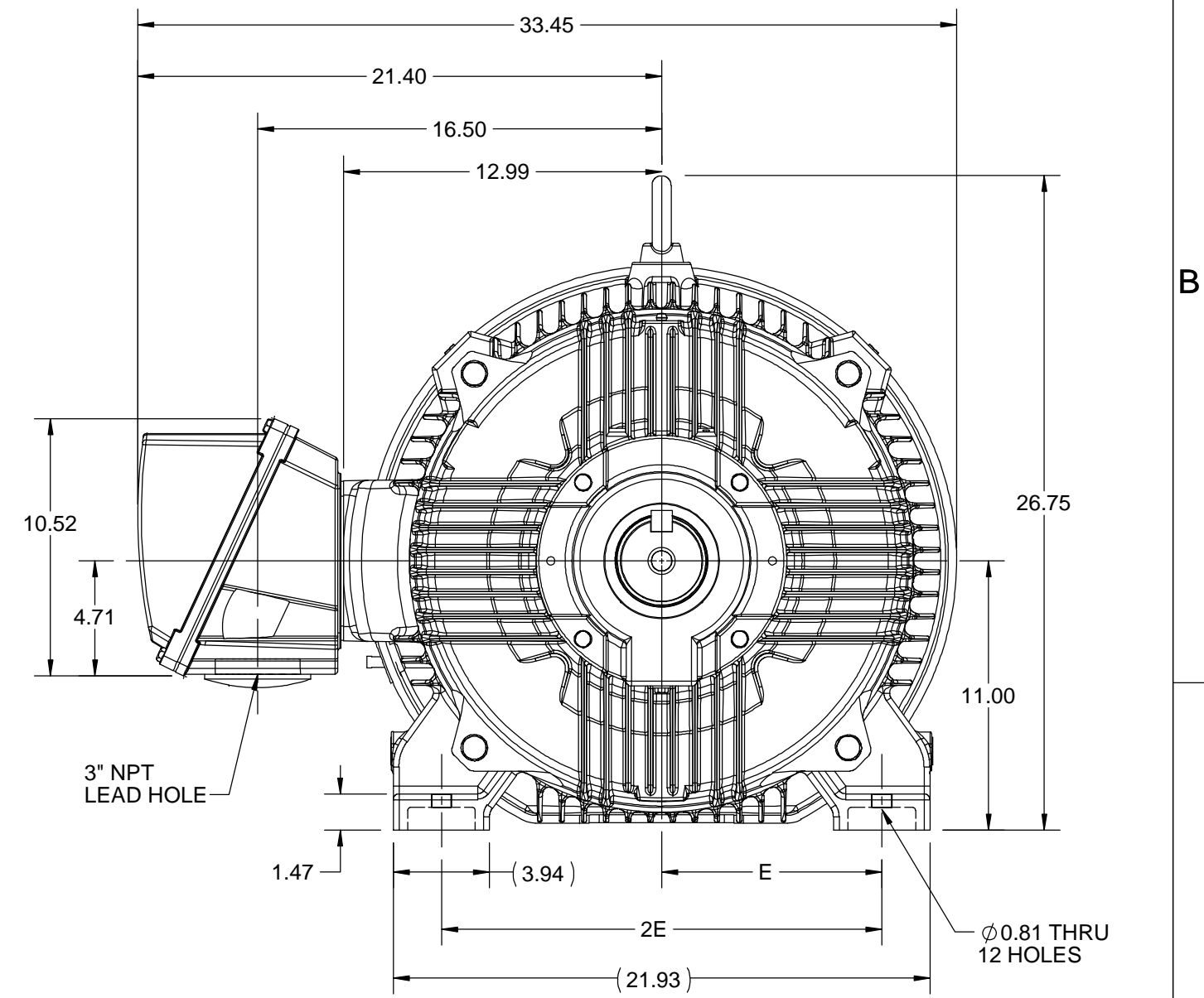
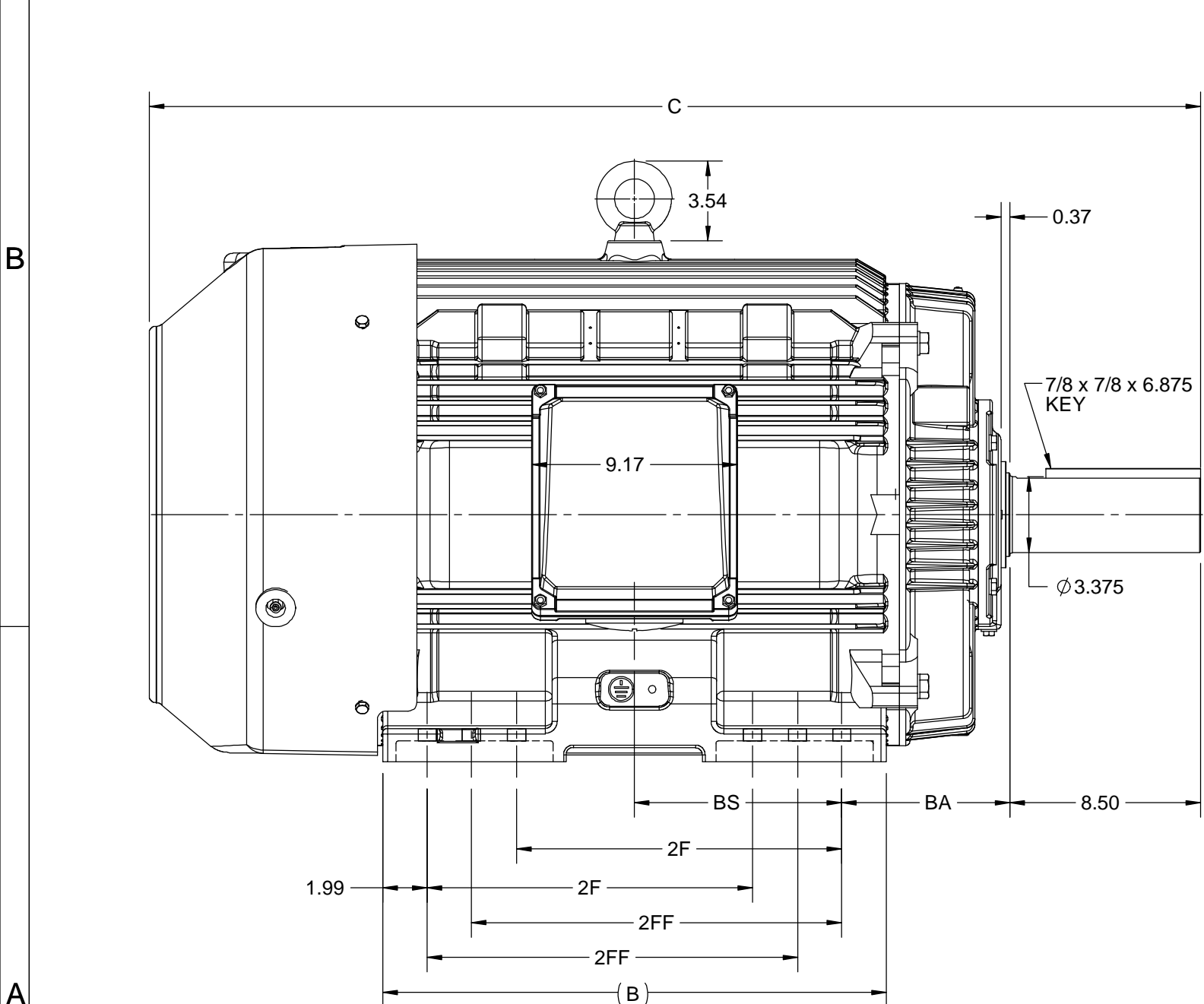
Nameplate Specifications

Technical Specifications

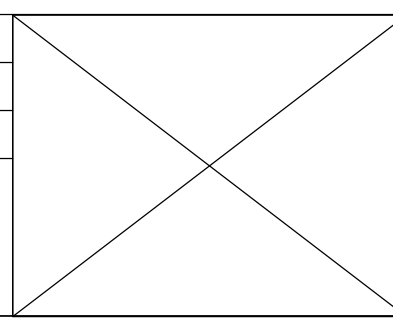
Shaft Diameter	3.375 in		
Outline Drawing	SS557668	Connection Drawing	EE7300V



This is an uncontrolled document once printed or downloaded and is subject to change without notice. Date Created:04/24/2023

4				3				
B	C	E	2E	2F	2FF	BA	BS	MOUNTING
22.44	46.83	9.00	18.00	14.50	16.50	7.50	9.24	F1 OR F2



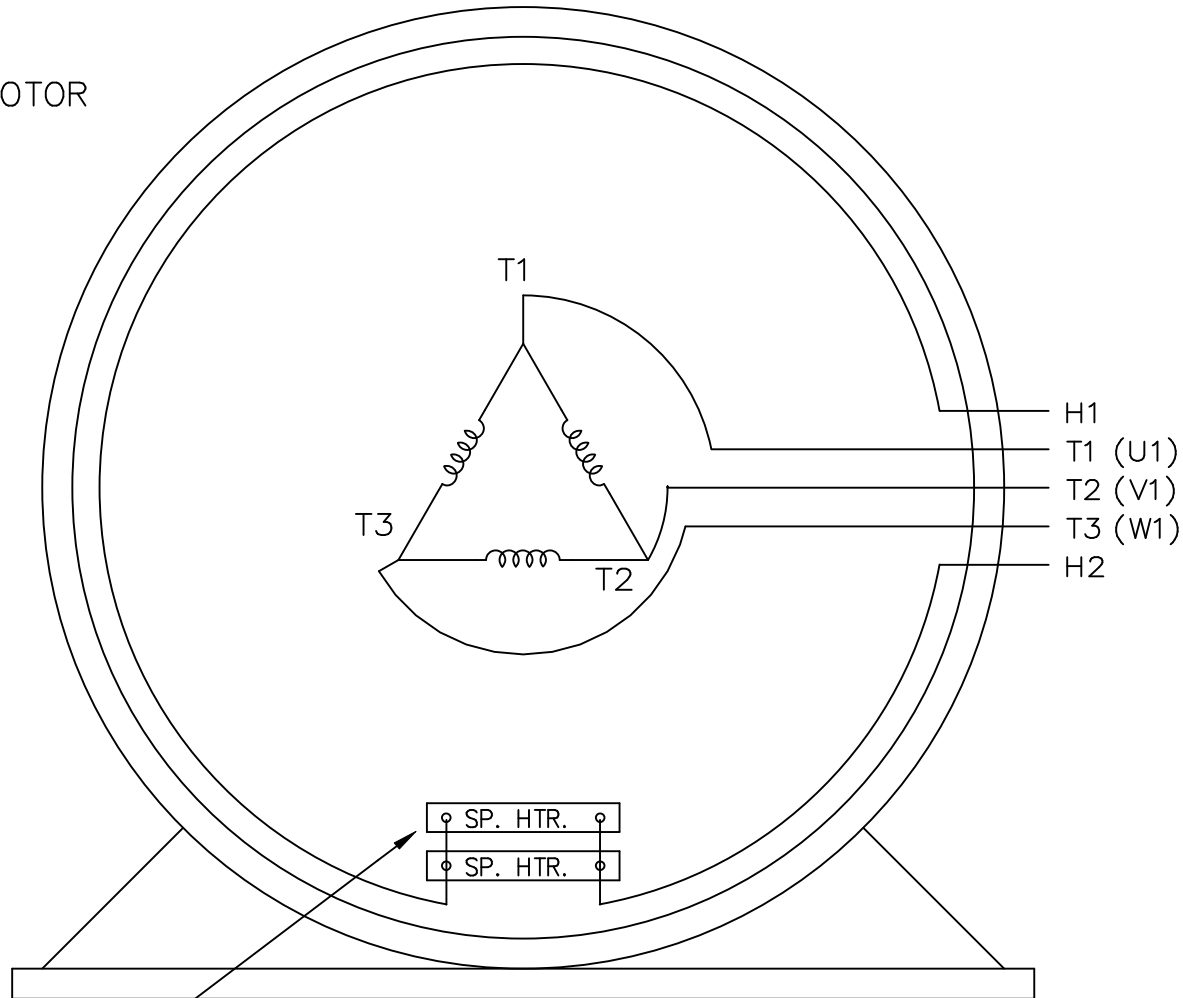
DRAWING REVISION C	REVISION BY BISWA	DATE 15/10/2020
ECO ECO-0195135	APPROVED BY GNK	DATE 15/10/2020
DRAWING UPDATED		
<small>COPYRIGHT REGAL BELOIT AMERICA, INC. ALL RIGHTS RESERVED. PROPRIETARY AND CONFIDENTIAL INFORMATION - THIS DOCUMENT IS THE PROPERTY OF REGAL BELOIT AMERICA, INC. ("OWNER") AND CONTAINS OWNER'S PROPRIETARY INFORMATION. ANY PERSON, CORPORATION OR OTHER FIRM RECEIVING IT IS DEEMED, BY RECEIVING IT, TO AGREE THAT IT, AND/OR ANY PART OF IT, SHALL NOT BE DISCLOSED TO ANY PERSON, CORPORATION OR OTHER ENTITY, DUPLICATED, AND/OR USED, EXCEPT AS EXPRESSLY APPROVED IN WRITING IN ADVANCE BY OWNER. THIS DOCUMENT SHALL BE RETURNED TO OWNER UPON REQUEST. IT MAY BE SUBJECT TO CERTAIN RESTRICTIONS UNDER APPLICABLE EXPORT CONTROL LAWS AND REGULATIONS.</small>		



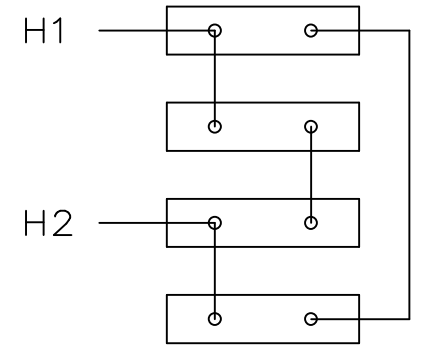
DRAWN BY BISWA	 Regal Beloit America, Inc.
DATE 24/12/2018	
APPROVED BY SBD	DESCRIPTION OUTLINE 444/445T FR-NEMA-SD & IEEE841
DATE 24/12/2018	MATERIAL
REFERENCE	PROCESS/FINISH
THIRD ANGLE PROJECTION 	SIZE B
	DRAWING NUMBER SS557668
	SHEET 1 OF 1

EE7300V

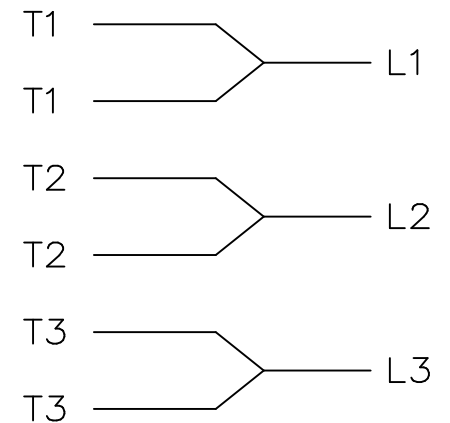
SINGLE VOLTAGE
THREE PHASE MOTOR



SPACE HEATERS
CONNECTED IN
SERIES PARALLEL



IF MOTOR OR GEN.
HAS 6 LEADS



WHEN MORE THAN ONE
SPACE HEATER, CONNECT
IN PARALLEL

VIEW OF TERMINAL END

NOTE: IEC LEAD MARKINGS ARE NOTED IN PARENTHESES

				TOLERANCES UNLESS SPECIFIED		MARATHON ELECTRIC	DRAWN DJK 04-29-1993				
				DEC.	INCHES		CHK	ML	04-30-1993		
7	ADDED IEC LEAD MARKINGS AND NOTE	AK 08-24-2008	SVL	.X	±.1	TITLE CONNECTION DIAGRAM 3Ø-SINGLE VOLTAGE-WITH SPACE HEATERS	APPD	TB	04-30-1993		
6	REDRAWN IN AUTOCAD	TAT 08-02-2004	ML	.XX	±.02		SCALE	1=1			
5	REDRAWN ON CADD, ADDED SPACE HEATERS WITH SERIES PARALLEL CONNECTION 4025224	DJK 05-03-1993		.XXX	±.005		REF				
				.XXXX	±.0005		FMF				
NO.	REVISION	BY & DATE	CHK	ANG	±7'30"		PREV				
THIS DRAWING IN DESIGN AND DETAIL IS OUR PROPERTY AND MUST NOT BE USED EXCEPT IN CONNECTION WITH OUR WORK ALL RIGHTS OF DESIGN AND INVENTION ARE RESERVED THIS IS AN ELECTRONICALLY GENERATED DOCUMENT - DO NOT SCALE THIS PRINT				RFP	CAD FILE ee7300v		SIZE	DRAWING NO.	PAGE	OF	REV.
				DIST			A	EE7300V			7

Data Sheet

Date: 8/11/2022
 Customer: _____
 Attention: _____
 Submitted by: _____



444TTFC36528
 280024.003 FAN
Submittal
 Data @ 460 V

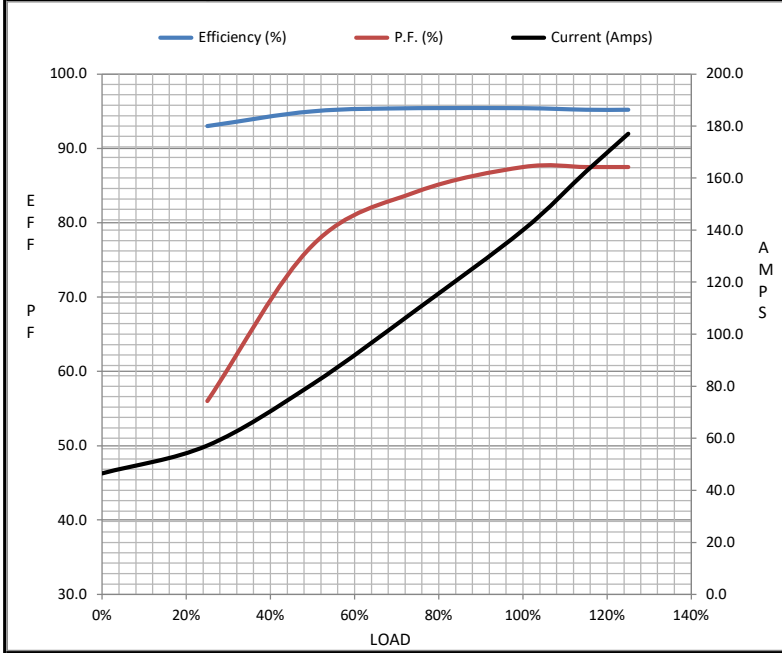
Motor Load Data

Load	0%	25%	50%	75%	100%	115%	125%	LR	
Current (Amps)	46.5	57.2	80.8	110	140	163	177	905	
Torque (ft-lb)	0.00	91.5	183	275	367	423	460	679	
RPM	1800	1796	1794	1792	1790	1,788	1786	0	
Efficiency (%)		93.0	95.0	95.4	95.4		95.2		
P.F. (%)	5.0	56.0	77.0	84.2	87.5	87.5	87.5	36.0	

Motor Speed Data

	LR	Pull-Up	BD	Rated	Idle
Speed (RPM)	0	900	1755	1790	1800
Current (Amps)	905	720	510	140	46.5
Torque (ft-lb)	679	570	991	367	0.00

Information Block				
HP	125.0			
Sync. RPM	1800			
Frame	444			
Enclosure	TEFC			
Construction	TFC			
Voltage	460 V			
Frequency	60 Hz			
Design	B			
LR Code letter	G			
Service Factor	1.15			
Temp Rise @ FL	65 °C			
Duty	CONT			
Ambient	40 °C			
Elevation	1,000 feet			
Rotor/Shaft wk ²	53.9 Lb-Ft ²			
Ref Wdg	HA32804010 NONE			
Sound Pressure @ 1M	75 dBA			
VFD Rating	CONSTANT 10:1			
Outline Dwg	SS557668			
Conn. Diag	EE7300V			
Additional Specifications:				
0				
0				
EQUIV CKT (OHMS / PHASE)				
R1	R2	X1	X2	Xm
0.0230	0.0110	0.1520	0.2790	5.7890



Speed - Torque Curve

