

# PRODUCT INFORMATION PACKET

**marathon®**  
Motors

Model No: 444TTDS16043

Catalog No: U911A

150 HP General Purpose Motor, 3 phase, 1800 RPM, 575 V, 444T Frame, ODP  
General Purpose Motors



Regal and Marathon are trademarks of Regal Rexnord Corporation or one of its affiliated companies.  
©2021 Regal Rexnord Corporation, All Rights Reserved. MC017097E

**RegalRexnord**

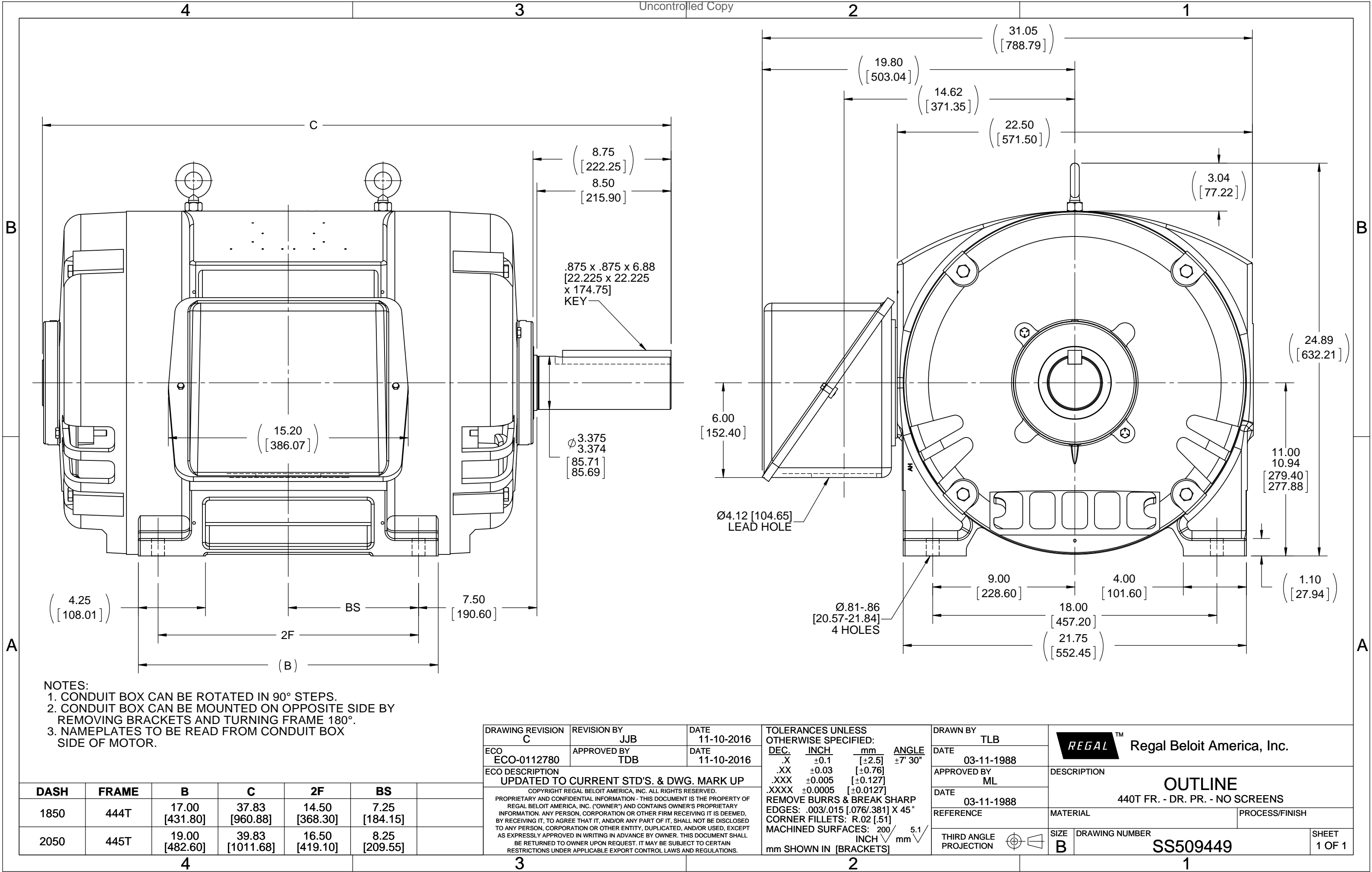
**Nameplate Specifications**

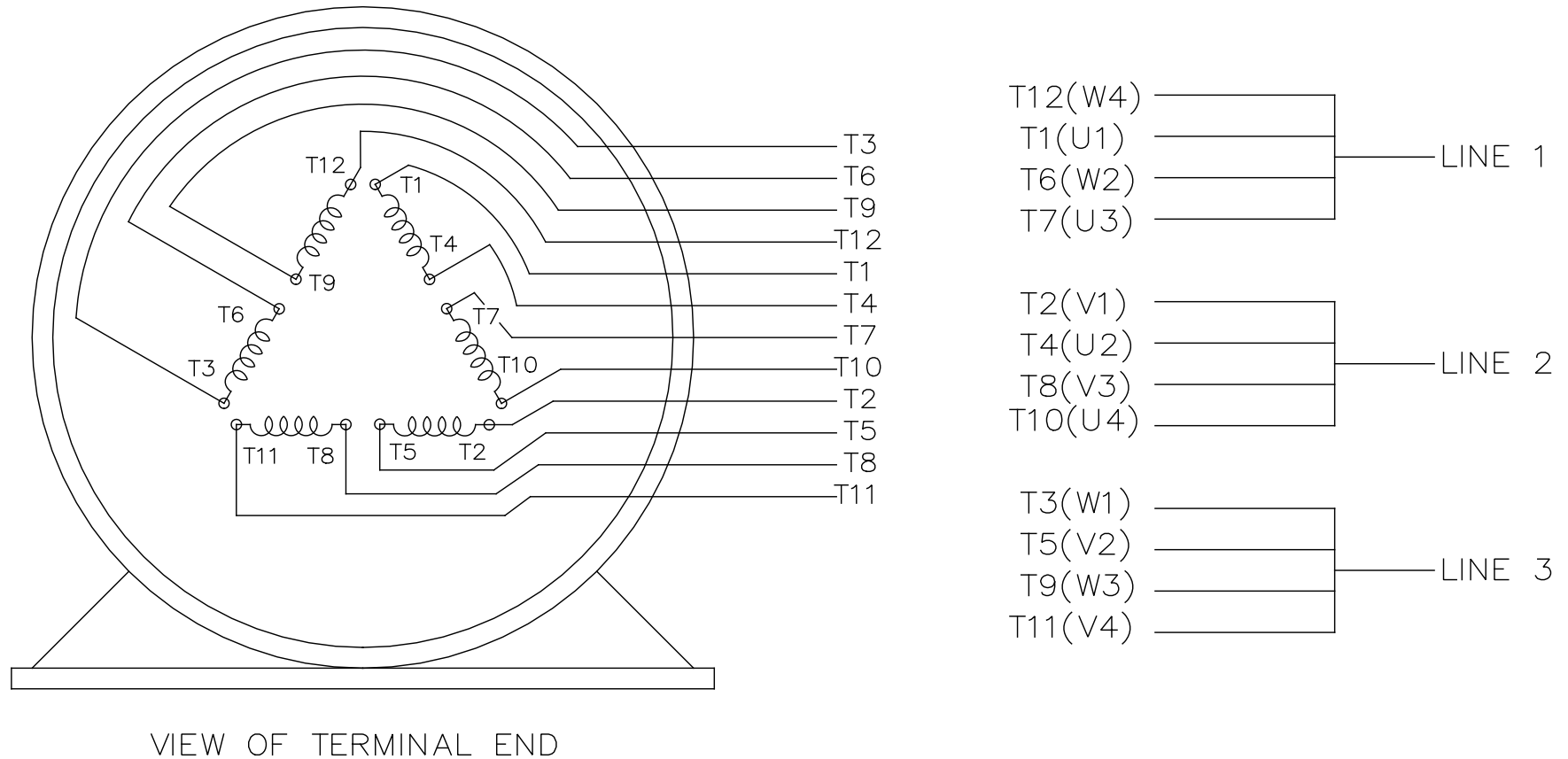
Output HP	150 Hp	Output KW	112.0 kW
Frequency	60 Hz	Voltage	575 V
Current	136.0 A	Speed	1785 rpm
Service Factor	1.15	Phase	3
Efficiency	95.8 %	Power Factor	86.5
Duty	Continuous	Insulation Class	F
Design Code	B	KVA Code	F
Frame	444T	Enclosure	Drip Proof
Thermal Protection	No	Ambient Temperature	40 °C
Drive End Bearing Size	6318	Opp Drive End Bearing Size	6316
UL	Recognized	CSA	Y
CE	Y	IP Code	12
Number of Speeds	1		

**Technical Specifications**

Electrical Type	Squirrel Cage Inverter Rated	Starting Method	Part Wdg Start & Wye Start Delta Run Or Inverter
Poles	4	Rotation	Reversible
Resistance Main	.0295 Ohms	Mounting	Rigid Base
Motor Orientation	Horizontal	Drive End Bearing	Ball
Opp Drive End Bearing	Ball	Frame Material	Cast Iron
Shaft Type	T	Overall Length	37.83 in
Frame Length	18.50 in	Shaft Diameter	3.375 in
Shaft Extension	8.75 in	Assembly/Box Mounting	F1/F2 Capable
Connection Drawing	A-EE7300BH	Outline Drawing	B-SS509449-1850

This is an uncontrolled document once printed or downloaded and is subject to change without notice. Date Created:10/12/2021





				TOLERANCES UNLESS SPECIFIED		 REGAL - BELOIT CORPORATION	DRAWN RJW 02-11-2005						
				DEC.	INCHES		CHK	ML	02-11-2005				
				.X	±.1		APPD	GK	02-11-2005				
				.XX	±.02		TITLE CONNECTION DIAGRAM 12 LEAD- SINGLE VOLTAGE				SCALE		
D	CHANGED TO REGAL TITLE BLOCK	ECO-0108299	WGJ 08/22/2016	EMH	.XXX	±.005					REF		
1	ADDED IEC TERMINAL MARKINGS	CN 41429	JJB 05/24/2007	ML	.XXXX	±.0005	MAT'L.	FMF					
NO.	REVISION		BY & DATE	CHK	ANG	±7'30"	FINISH		PREV				
THIS DRAWING IN DESIGN AND DETAIL IS OUR PROPERTY AND MUST NOT BE USED EXCEPT IN CONNECTION WITH OUR WORK ALL RIGHTS OF DESIGN AND INVENTION ARE RESERVED THIS IS AN ELECTRONICALLY GENERATED DOCUMENT - DO NOT SCALE THIS PRINT				RFP	02-11-2005		CAD FILE ee7300bh		SIZE	DRAWING NO.	PAGE	OF	REV.
				DIST LB				A	EE7300BH		C		

## CERTIFICATION DATA SHEET

Model#: 444TTDS16043 AN

WINDING#: T444448 NONE 2

CONN. DIAGRAM: A-EE7300BH

ASSEMBLY: F1/F2 CAPABLE

OUTLINE: B-SS509449-1850

## TYPICAL MOTOR PERFORMANCE DATA

HP	KW	SYNC. RPM	F.L. RPM	FRAME	ENCLOSURE	KVA CODE	DESIGN
150	112	1800	1785	444T	DP	F	B

PH	Hz	VOLTS	FL AMPS	START TYPE	DUTY	INSL	S.F	AMB°C	ELEVATION
3	60	575	136	PWS & YDRUN OR INV	CONTINUOU S	F1	1.15	40	3300

FULL LOAD EFF: 95.8	3/4 LOAD EFF: 95.8	1/2 LOAD EFF: 95.4	GTD. EFF	ELEC. TYPE	NO LOAD AMPS
FULL LOAD PF: 86.5	3/4 LOAD PF: 85	1/2 LOAD PF: 79.5	95.4	SQ CAGE INV RATED	37.6

F.L. TORQUE	LOCKED ROTOR AMPS	L.R. TORQUE	B.D. TORQUE	F.L. RISE°C
442 LB-FT	800	600 LB-FT 136	1025 LB-FT 232	37

SOUND PRESSURE @ 3 FT.	SOUND POWER	ROTOR WK^2	MAX. WK^2	SAFE STALL TIME	STARTS /HOUR	APPROX. MOTOR WGT
80 dBA	90 dBA	39.5 LB-FT^2	750 LB-FT^2	20 SEC.	2	1150 LBS.

## \*\*\* SUPPLEMENTAL INFORMATION \*\*\*

DE BRACKET TYPE	ODE BRACKET TYPE	MOUNT TYPE	ORIENTATION	SEVERE DUTY	HAZARDOUS LOCATION	DRIP COVER	SCREENS	PAINT
STANDARD	STANDARD	RIGID	HORIZONTAL	FALSE	NONE	FALSE	NONE	BLUE (ENAMEL)

BEARINGS		GREASE	SHAFT TYPE	SPECIAL DE	SPECIAL ODE	SHAFT MATERIAL	FRAME MATERIAL
DE	OPE						
BALL	BALL						
6318	6316	POLYREX EM	T	NONE	NONE	1045 HOT ROLLED (C-204)	CAST IRON

THERMO-PROTECTORS				THERMISTORS	CONTROL	SPACE /n HEATERS
THERMOSTATS	PROTECTORS	WDG RTDs	BRG RTDs			
NONE	NOT	NONE	NONE	NONE	FALSE	NONE VOLTS

If Inverter equals NONE, contact factory for further  
information

INVERTER TORQUE: VARIABLE 10:1			
INV. HP SPEED RANGE: NONE			
ENCODER: NONE			
NONE NONE			
NONE NONE PPR			
BRAKE: NONE NONE			
NONE P/N NONE			
NONE NONE			
NONE FT-LB	NONE V	NONE Hz	

\*  
N  
O  
T  
E  
S  
\*

DATE: 06/21/2017 04:20:52 AM  
FORM 3531 REV.3 02/07/99  
\*\* Subject to change without notice.

## Data Sheet

Date: 6/19/2017

Customer: \_\_\_\_\_

Attention: \_\_\_\_\_

Submitted by: FAREEDA DUDEKULA



444TTDS16043

Submittal

Data @ 575 V

## Motor Load Data

Load	0%	25%	50%	75%	100%	115%	125%	LR	
Current (Amps)	37.6	52.0	74.4	103	136	154	171	800	
Torque (ft-lb)	0.00	110	220	331	442	498	554	600	
RPM	1800	1795	1792	1788	1785	1,780	1778	0	
Efficiency (%)		93.6	95.4	95.8	95.8	95.4	95.0		
P.F. (%)	7.5	57.0	79.5	85.0	86.5	86.5	86.5	26.0	

## Motor Speed Data

	LR	Pull-Up	BD	Rated	Idle					
Speed (RPM)	0	900		1785	1800					
Current (Amps)	800	680	460	136	37.6					
Torque (ft-lb)	600	525	1,025	442	0.00					

Efficiency (%)

P.F. (%)

Current (Amps)

Load (%)	Efficiency (%)	P.F. (%)	Current (Amps)
25	93.0	57.0	45.0
50	94.5	78.0	55.0
75	95.5	84.0	70.0
100	96.0	86.0	90.0
125	95.0	87.0	175.0

HP	150.0			
Sync. RPM	1800			
Frame	444			
Enclosure	DP			
Construction	TDS			
Voltage	575 V			
Frequency	60 Hz			
Design	B			
LR Code letter	F			
Service Factor	1.15			
Temp Rise @ FL	37 ° C			
Duty	CONT			
Ambient	40 ° C			
Elevation	1,000 feet			
Rotor/Shaft wk²	39.5 Lb-Ft²			
Ref Wdg	T444448 NONE			
Sound Pressure @ 1M	80 dBA			
VFD Rating	VARIABLE 10:1			
Outline Dwg	B-SS509449-1850			
Conn. Diag	A-EE7300BH			
Additional Specifications:				
0				
0				
EQUIV CKT (OHMS / PHASE)				
R1	R2	X1	X2	Xm
0.0320	0.0250	0.3400	0.2870	9.0870

## Speed -Torque Curve

