

# PRODUCT INFORMATION PACKET

Model No: 444TSTFN16082  
Catalog No: 444TSTFN16082  
100,1200,TEFC,444TSC,3/60/480

Regal and are trademarks of Regal Rexnord Corporation or one of its affiliated companies.  
©2022 Regal Rexnord Corporation, All Rights Reserved. MC017097E



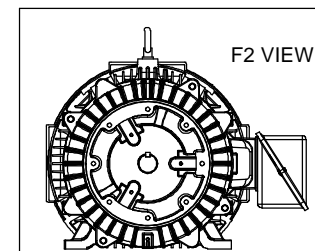
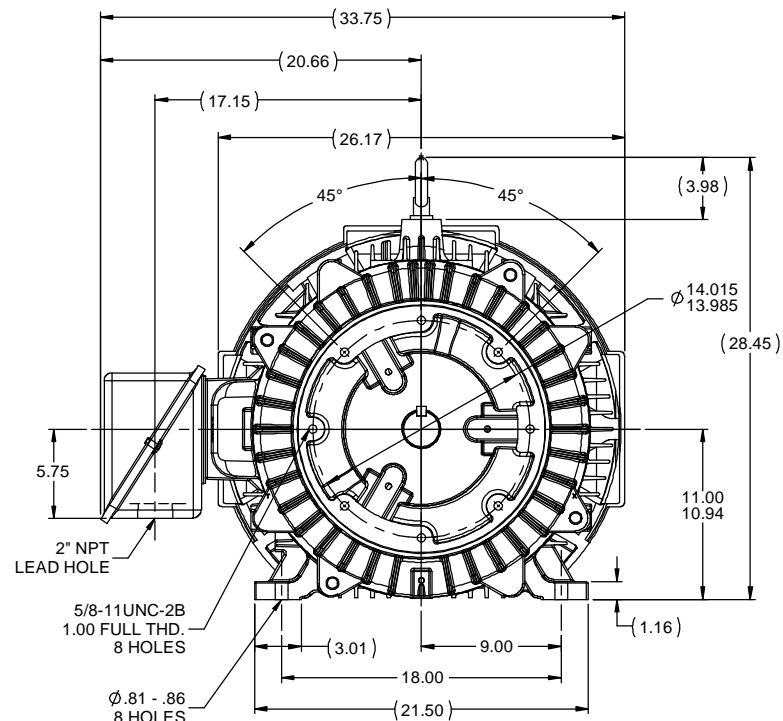
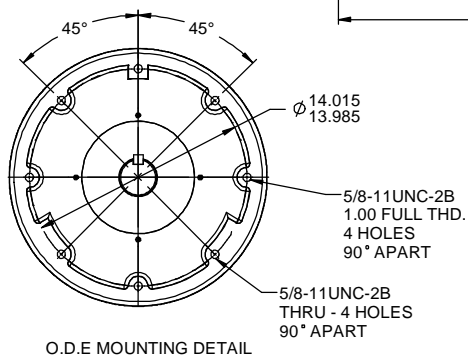
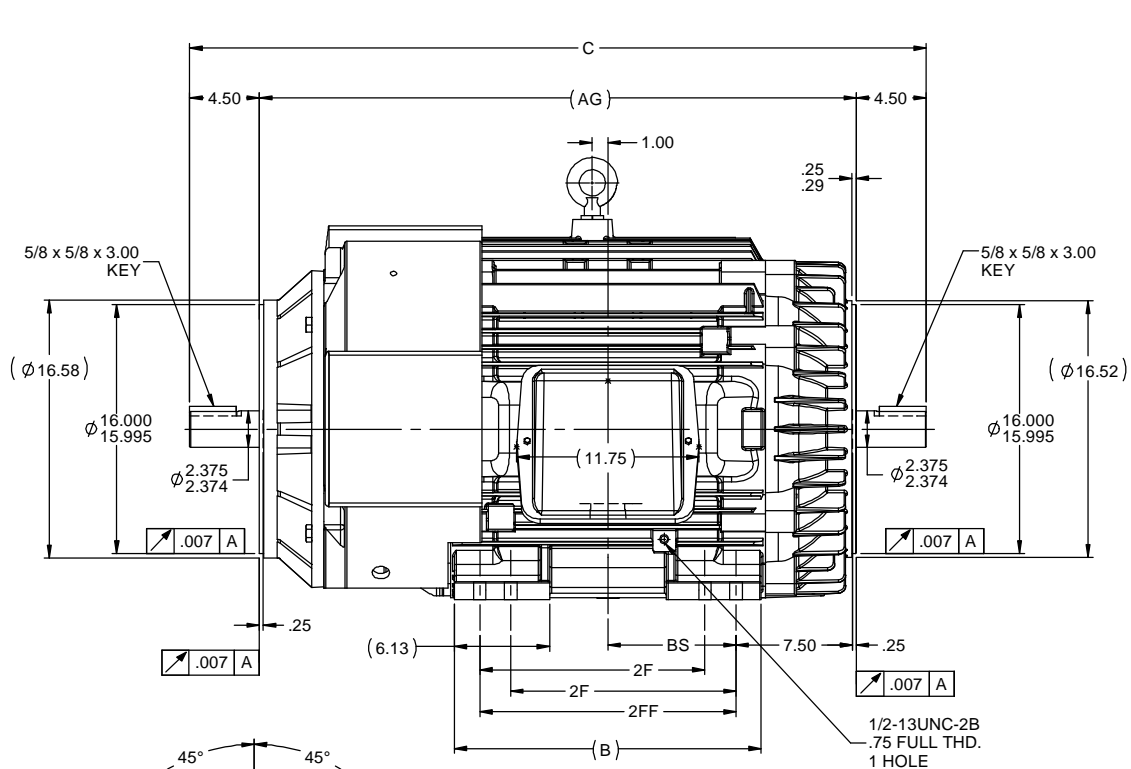
## Nameplate Specifications

Output HP	100 Hp	Output KW	75.0 kW
Frequency	60 Hz	Voltage	480 V
Current	115.0 A	Speed	1190 rpm
Service Factor	1.15	Phase	3
Efficiency	95 %	Power Factor	82
Duty	Continuous	Insulation Class	F
Design Code	B	KVA Code	G
Frame	444TSC	Enclosure	Totally Enclosed Fan Cooled
Thermal Protection	No Protection	Ambient Temperature	40 °C
Drive End Bearing Size	6313	Opp Drive End Bearing Size	6313
UL	Recognized	CSA	Y
CE	Y	IP Code	43
Number of Speeds	1		

## Technical Specifications

Electrical Type	Squirrel Cage Inverter Rated	Starting Method	Line Or Inverter
Poles	6	Rotation	Reversible
Resistance Main	.036 Ohms	Mounting	Rigid Base
Motor Orientation	Horizontal	Drive End Bearing	Ball
Opp Drive End Bearing	Ball	Frame Material	Cast Iron
Shaft Type	TS BOTH ENDS	Assembly/Box Mounting	F1/F2 CAPABLE
Inverter Load	CONSTANT 10:1		
Outline Drawing	SS555311-2025	Connection Drawing	EE7300U

This is an uncontrolled document once printed or downloaded and is subject to change without notice. Date Created:09/02/2022



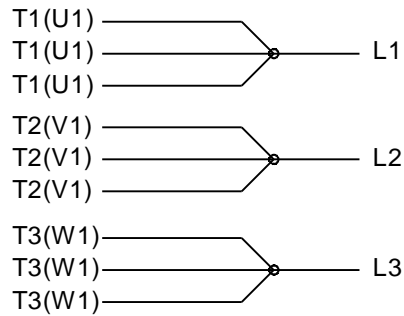
- NOTES:
1. CONDUIT BOX CAN BE ROTATED IN 90 ° STEPS.
  2. CONDUIT BOX CAN BE MOUNTED ON OPPOSITE SIDE BY REMOVING BRACKETS AND TURNING FRAME 180 °.
  3. NAMEPLATES TO BE READ FROM CONDUIT BOX SIDE OF MOTOR.

DASH	FRAME	B	C	AG	2F	2FF	BS
2025	444/445TSC	19.75	47.44	38.44	14.50	16.50	8.25

				TOLERANCES UNLESS SPECIFIED		marathon <sup>®</sup> electric	DRAWN HV 07-20-2012	
				DEC	INCHES		CHK MH 07-21-2012	
				X	±.1	TITLE OUTLINE - TEFC 444-445TSC FR. - C'FACE - DBL. EXT.	APPR DJK 07-21-2012	
				XX	±.03		SCALE 1:8	
				XXX	±.005		REF	
1	ADDED F2 VIEW	HV	08-03-2012	DJK	XXXX ±.0005	MATL	FMF MU108848	
				CHK	ANG ±7'30"	FINISH	PAGE OF	
				RFP		PREV	SIZE B	DRAWING NO SS555311
				NETWORK FILE NAME SS555311				REV 1

THIRD ANGLE PROJECTION

## IF MOTOR HAS 9 LEADS



## IF MOTOR HAS 6 LEADS

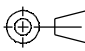


A-9806 DECAL IF CALLED FOR

## IF MOTOR HAS 12 LEADS



VIEW OF TERMINAL END

DRAWING REVISION L	REVISION BY AJW	DATE 05-04-2015	TOLERANCES UNLESS OTHERWISE SPECIFIED: <div><div>DEC.</div><div>INCH</div><div>mm</div><div>ANGLE</div></div> <div><div>.X</div><div>±0.1</div><div>[±2.5]</div><div>±7° 30"</div></div> <div><div>.XX</div><div>±0.02</div><div>[±0.51]</div></div> <div><div>XXX</div><div>±0.005</div><div>[±0.127]</div></div> <div><div>.XXXX</div><div>±0.0005</div><div>[±0.0127]</div></div> <div>REMOVE BURRS &amp; BREAK SHARP EDGES: .003/.015 [076/381] X 45° CORNER FILLETS: R.02 [51] MACHINED SURFACES: 200 INCH 5.1 mm mm SHOWN IN [BRACKETS]</div>		DRAWN BY DRS	<div><div>REGAL™</div><div>Regal Beloit America, Inc.</div></div>	
ECO ECO-0077067	APPROVED BY EWH	DATE 05-05-2015			DATE 09-27-1996	DESCRIPTION	
ECO DESCRIPTION UPDATED TO SOLIDWORKS			APPROVED BY GK		CONN DIAGRAM-EXTERNAL 3Ø SINDLE VOLTAGE		
COPYRIGHT REGAL BELOIT AMERICA, INC. ALL RIGHTS RESERVED. PROPRIETARY AND CONFIDENTIAL INFORMATION - THIS DOCUMENT IS THE PROPERTY OF REGAL BELOIT AMERICA, INC. ("OWNER") AND CONTAINS OWNER'S PROPRIETARY INFORMATION. ANY PERSON, CORPORATION OR OTHER FIRM RECEIVING IT IS DEEMED, BY RECEIVING IT, TO AGREE THAT IT, AND/OR ANY PART OF IT, SHALL NOT BE DISCLOSED TO ANY PERSON, CORPORATION OR OTHER ENTITY, DUPLICATED, AND/OR USED, EXCEPT AS EXPRESSLY APPROVED IN WRITING IN ADVANCE BY OWNER. THIS DOCUMENT SHALL BE RETURNED TO OWNER UPON REQUEST. IT MAY BE SUBJECT TO CERTAIN RESTRICTIONS UNDER APPLICABLE EXPORT CONTROL LAWS AND REGULATIONS.			DATE 09-30-1996				
REFERENCE			MATERIAL		PROCESS/FINISH		
THIRD ANGLE PROJECTION					SIZE A	DRAWING NUMBER EE7300U	
					SHEET 1 OF 1		