

PRODUCT INFORMATION PACKET

Model No: 444TSTDS4056

Catalog No: U456

Other Purpose Motor, 150 HP, 3 Ph, 60 Hz, 460 V, 1800 RPM, 444TSC Frame, DP



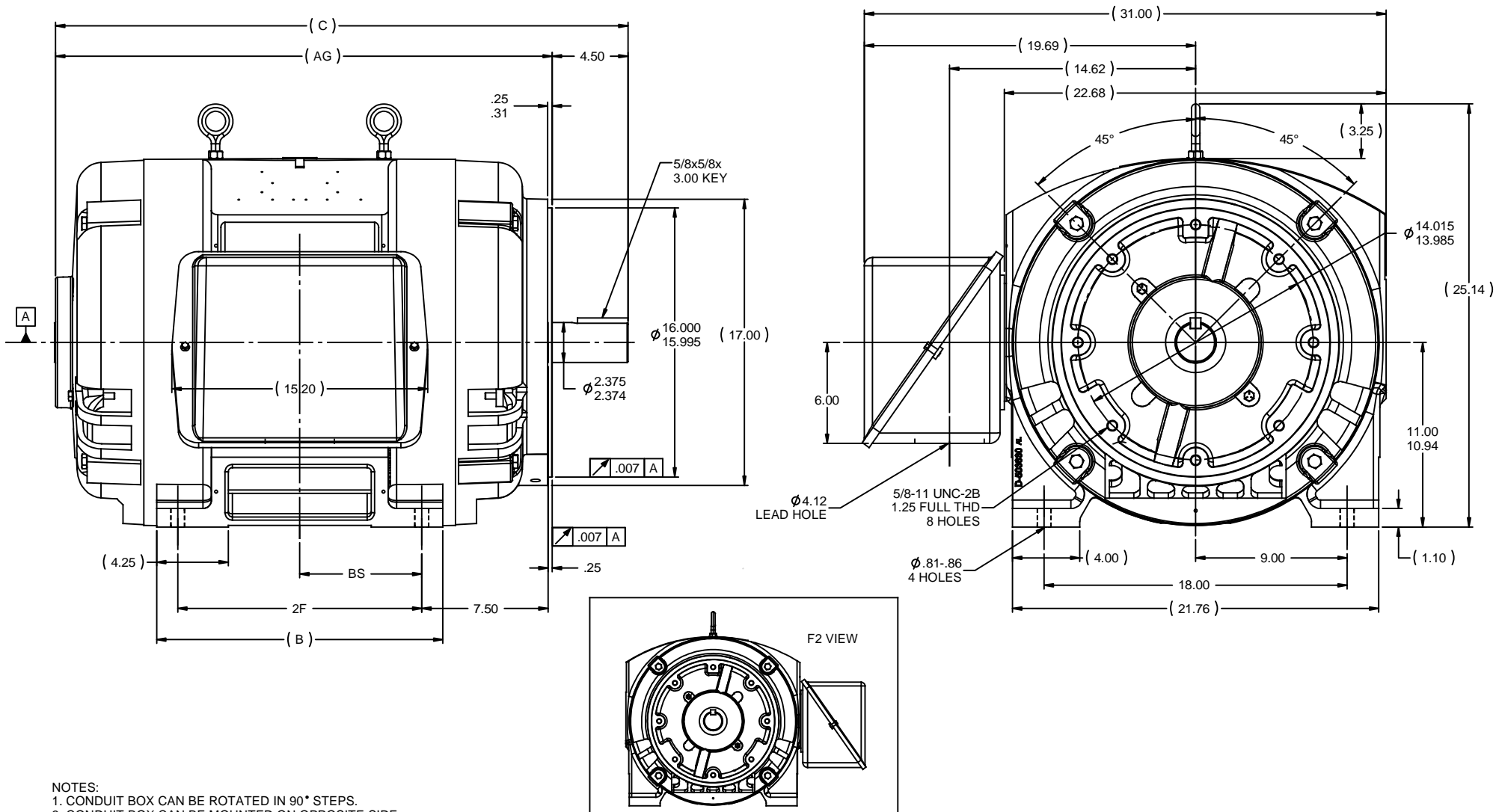
Regal and are trademarks of Regal Rexnord Corporation or one of its affiliated companies.
©2022 Regal Rexnord Corporation, All Rights Reserved. MC017097E

Nameplate Specifications

Output HP	150 Hp	Output KW	112.0 kW
Frequency	60 Hz	Voltage	460 V
Current	176.0 A	Speed	1785 rpm
Service Factor	1.15	Phase	3
Efficiency	95 %	Power Factor	84
Duty	Continuous	Insulation Class	B
Design Code	B	KVA Code	G
Frame	444TSC	Enclosure	Drip Proof
Thermal Protection	No Protection	Ambient Temperature	40 °C
Drive End Bearing Size	6313	Opp Drive End Bearing Size	6313
UL	Recognized	CSA	Y
CE	Y	IP Code	12
Number of Speeds	1		

Technical Specifications

Electrical Type	Squirrel Cage Induction Run	Starting Method	Wye Start Delta Run
Poles	4	Rotation	Reversible
Resistance Main	.028 Ohms	Mounting	Rigid Base
Motor Orientation	Horizontal	Drive End Bearing	Ball
Opp Drive End Bearing	Ball	Frame Material	Cast Iron
Shaft Type	TS	Overall Length	34.00 in
Frame Length	18.50 in	Shaft Diameter	3.375 in
Shaft Extension	4.75 in	Assembly/Box Mounting	F1/F2 CAPABLE
Connection Drawing	A-EE7340	Outline Drawing	B-SS509474-1850



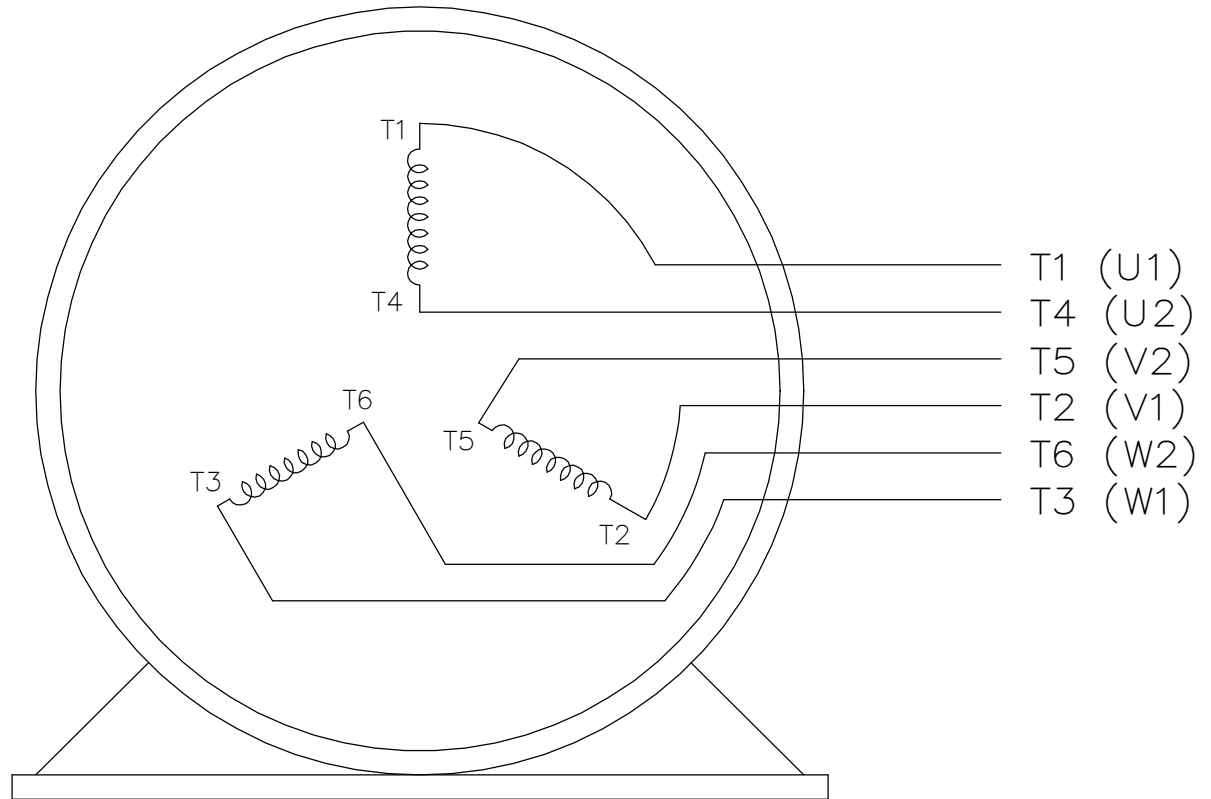
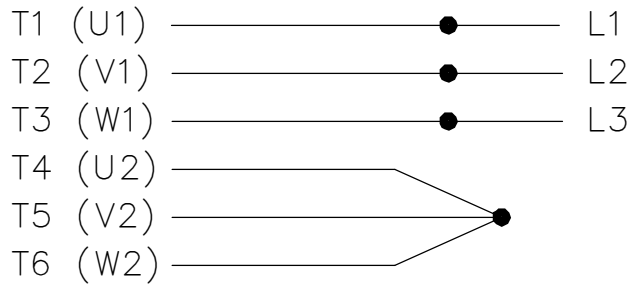
- NOTES:
1. CONDUIT BOX CAN BE ROTATED IN 90° STEPS.
 2. CONDUIT BOX CAN BE MOUNTED ON OPPOSITE SIDE BY REMOVING BRACKETS AND TURNING FRAME 180°.
 3. NAMEPLATES TO BE READ FROM CONDUIT BOX SIDE OF MOTOR.

DASH	FRAME	B	C	AG	2F	BS
1850	444TSC	17.00	34.00	29.50	14.50	7.25
2050	445TSC	19.00	36.00	31.50	16.50	8.25

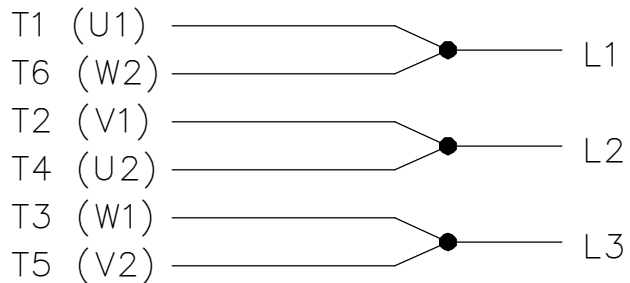
REVISION		BY & DATE	CHK	ANG	±7'30"	FINISH	PREV	SIZE	DRAWING NO	REV
9	REDRAWN IN SOLIDWORKS	JSB 09-13-2011	XX	DEC	INCHES					
8	ADDED F2 VIEW	CDP 09-08-2011	CMN	x	±.1					
7	UPDATED FRAME AND CONDUIT BOX CN 28063	KL 10-21-2004	XX	XX	±.03	TITLE	OUTLINE			
6	REDRAWN IN AUTOCAD	TAT 06-29-2004	ML	XXX	±.005		440TSC FR. - DR.PR. - C'FACE			
5	REDRAWN ON CADD	TBL 03-16-1988	XXX	XXX	±.0005	MAT'L				
THIRD ANGLE PROJECTION										
NETWORK FILE NAME								SS509474		
DRAWN								TLB 03-16-1988		
CHK								FG 03-16-1988		
APPR								ML 03-16-1988		
SCALE								1:5.5		
REF										
FMF										
PAGE								OF		
SIZE								B		
DRAWING NO								SS509474		
REV								9		

THREE PHASE
WYE START DELTA RUN

START


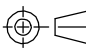


RUN



VIEW OF TERMINAL END

NOTE:
IEC LEAD MARKINGS ARE NOTED
IN PARANTHESES

DRAWING REVISION F		REVISION BY RTT	REV DATE/© DATE 05-29-2019	TOLERANCES (EXCEPT AS NOTED):		DRAWN BY LZ		 Regal Beloit America, Inc.		
ECO ECO-0167538		APPROVED BY JWA	DATE 05-29-2019	DEC. .X ±0.1 [±3]	INCH .XX ±0.02 [±0.5]	mm .XXX ±0.005 [±0.13]	ANGLE .XXXX ±0.0005 [±0.013]			DATE 01-06-1994
ECO DESCRIPTION UPDATED TITLE BLOCK				REMOVE BURRS & BREAK SHARP EDGES: .003/.015 [.08/.38] X 45° CORNER FILLETS: R.02 [.5]		MACHINED SURFACES: 200/ 5.1 INCH √ mm √		DESCRIPTION CONNECTION DIAGRAM 3<MOD-DIAM> - WYE START DELTA RUN		
COPYRIGHT (PER REVISION DATE) REGAL BELOIT AMERICA, INC. ALL RIGHTS RESERVED. PROPRIETARY AND CONFIDENTIAL INFORMATION - THIS DOCUMENT IS THE PROPERTY OF REGAL BELOIT AMERICA, INC. ("OWNER") AND CONTAINS OWNER'S PROPRIETARY INFORMATION. ANY PERSON, CORPORATION OR OTHER FIRM RECEIVING IT IS DEEMED, BY RECEIVING IT, TO AGREE THAT IT, AND/OR ANY PART OF IT, SHALL NOT BE DISCLOSED TO ANY PERSON, CORPORATION OR OTHER ENTITY, DUPLICATED, AND/OR USED, EXCEPT AS EXPRESSLY APPROVED IN WRITING IN ADVANCE BY OWNER. THIS DOCUMENT SHALL BE RETURNED TO OWNER UPON REQUEST. IT MAY BE SUBJECT TO CERTAIN RESTRICTIONS UNDER APPLICABLE EXPORT CONTROL LAWS AND REGULATIONS.				mm DIMENSIONS IN [BRACKETS] ARE FOR REFERENCE ONLY		THIRD ANGLE PROJECTION 		SIZE A	DRAWING NUMBER EE7340	SHEET 1 OF 1
				MATERIAL		PROCESS/FINISH		REFERENCE		PROCESS/FINISH