

# PRODUCT INFORMATION PACKET

marathon®  
Motors

Model No: 444TSTDS16034

Catalog No: U456A

XRI® General Purpose General Purpose Motor, 150 HP, 3 Ph, 60 Hz, 460 V, 1800 RPM, 444TSC Frame, DP



Regal and Marathon are trademarks of Regal Rexnord Corporation or one of its affiliated companies.

©2023 Regal Rexnord Corporation, All Rights Reserved. MC017097E

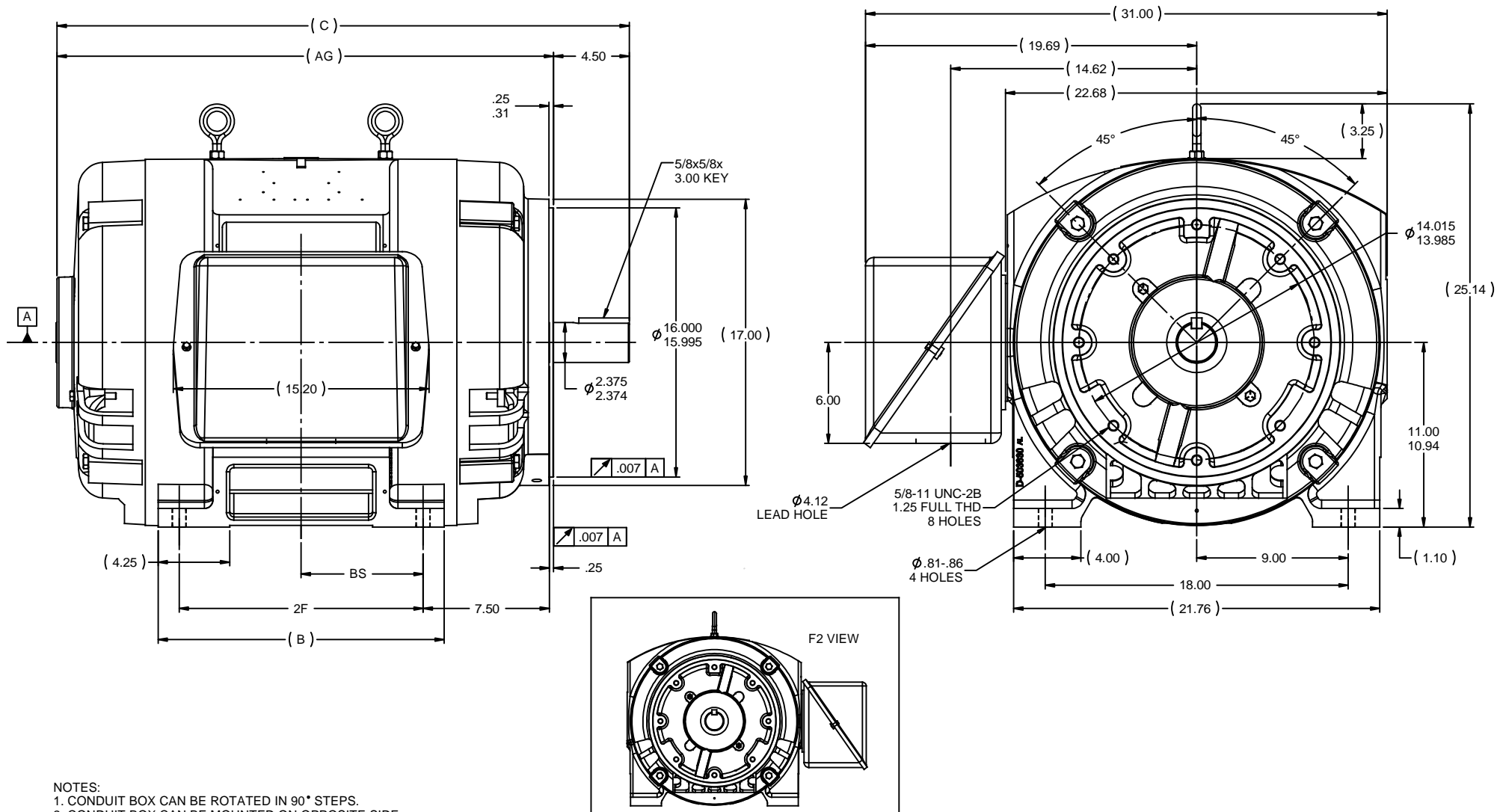
RegalRexnord

### Nameplate Specifications

Phase	<b>3</b>	Output HP	<b>150 Hp</b>
Output KW	<b>112.0 kW</b>	Voltage	<b>460 V</b>
Speed	<b>1785 rpm</b>	Service Factor	<b>1.15</b>
Frame	<b>444TSC</b>	Enclosure	<b>Drip Proof</b>
Thermal Protection	<b>No Protection</b>	Efficiency	<b>95.8 %</b>
Ambient Temperature	<b>40 °C</b>	Frequency	<b>60 Hz</b>
Current	<b>170.0 A</b>	Power Factor	<b>86.5</b>
Duty	<b>Continuous</b>	Insulation Class	<b>F</b>
Design Code	<b>B</b>	KVA Code	<b>F</b>
Drive End Bearing Size	<b>6313</b>	Opp Drive End Bearing Size	<b>6313</b>
UL	<b>Recognized</b>	CSA	<b>Y</b>
CE	<b>Y</b>	IP Code	<b>12</b>
Number of Speeds	<b>1</b>		

### Technical Specifications

Electrical Type	<b>Squirrel Cage Induction Run</b>	Starting Method	<b>Wye Start Delta Run</b>
Poles	<b>4</b>	Rotation	<b>Reversible</b>
Resistance Main	<b>.0295 Ohms</b>	Mounting	<b>Rigid Base</b>
Motor Orientation	<b>Horizontal</b>	Drive End Bearing	<b>Ball</b>
Opp Drive End Bearing	<b>Ball</b>	Frame Material	<b>Cast Iron</b>
Shaft Type	<b>TS</b>	Overall Length	<b>34.00 in</b>
Frame Length	<b>18.50 in</b>	Shaft Diameter	<b>3.375 in</b>
Shaft Extension	<b>4.75 in</b>	Assembly/Box Mounting	<b>F1/F2 CAPABLE</b>
Connection Drawing	<b>A-EE7340</b>	Outline Drawing	<b>B-SS509474-1850</b>



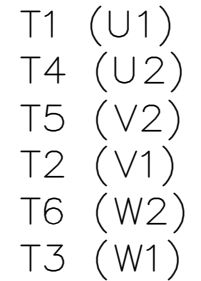
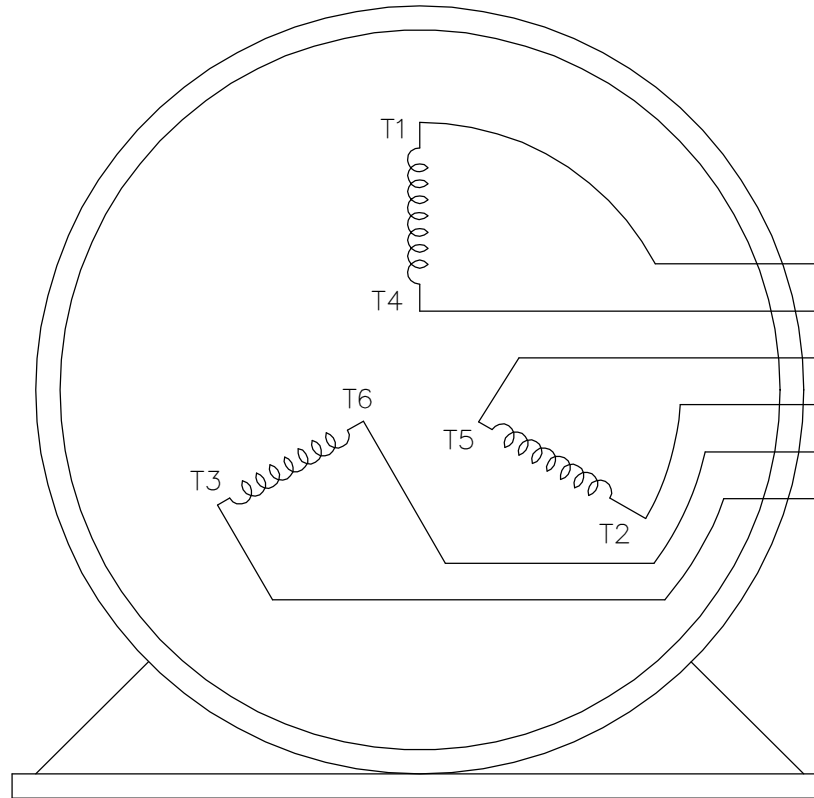
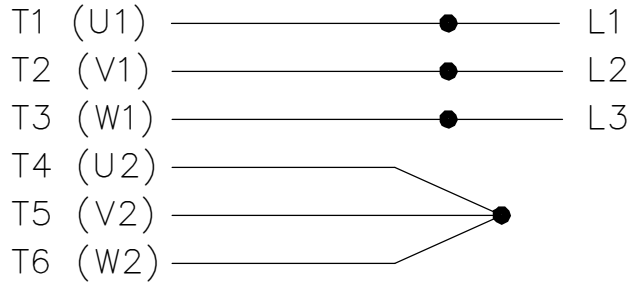
- NOTES:  
 1. CONDUIT BOX CAN BE ROTATED IN 90° STEPS.  
 2. CONDUIT BOX CAN BE MOUNTED ON OPPOSITE SIDE BY REMOVING BRACKETS AND TURNING FRAME 180°.  
 3. NAMEPLATES TO BE READ FROM CONDUIT BOX SIDE OF MOTOR.

DASH	FRAME	B	C	AG	2F	BS
1850	444TSC	17.00	34.00	29.50	14.50	7.25
2050	445TSC	19.00	36.00	31.50	16.50	8.25

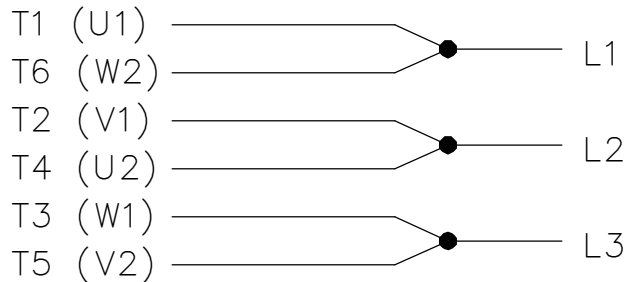
REVISION		BY & DATE	CHK	ANG	±7'30"	FINISH	SIZE	DRAWING NO	REV
9	REDRAWN IN SOLIDWORKS	JSB 09-13-2011	XX	DEC	INCHES		B	SS509474	9
8	ADDED F2 VIEW	CDP 09-08-2011	CMN	x	±.1				
7	UPDATED FRAME AND CONDUIT BOX CN 28063	KL 10-21-2004	XX	XX	±.03	TITLE OUTLINE			
6	REDRAWN IN AUTOCAD	TAT 06-29-2004	ML	XXX	±.005	440TSC FR. - DR.PR. - C'FACE			
5	REDRAWN ON CADD	TBL 03-16-1988	XXX	XXX	±.0005	MAT'L			
THIRD ANGLE PROJECTION									
TOLERANCES UNLESS SPECIFIED									
DRAWN									
CHK									
APPR									
SCALE									
REF									
FMF									
PAGE									
OF									

THREE PHASE  
WYE START DELTA RUN

START




RUN



VIEW OF TERMINAL END

NOTE:  
IEC LEAD MARKINGS ARE NOTED  
IN PARANTHESES

DRAWING REVISION F		REVISION BY RTT		REV DATE/© DATE 05-29-2019		TOLERANCES (EXCEPT AS NOTED):		DRAWN BY LZ		 Regal Beloit America, Inc.	
ECO ECO-0167538		APPROVED BY JWA		DATE 05-29-2019		DEC.    INCH    mm    ANGLE .X       ±0.1     [±3]     ±7° 30" .XX      ±0.02    [±0.5] .XXX     ±0.005    [±0.13] .XXXX   ±0.0005 [±0.013]		DATE 01-06-1994			
ECO DESCRIPTION UPDATED TITLE BLOCK						REMOVE BURRS & BREAK SHARP EDGES: .003/.015 [.08/.38] X 45° CORNER FILLETS: R.02 [.5] MACHINED SURFACES: 200/ 5.1 INCH √ mm √ mm DIMENSIONS IN [BRACKETS] ARE FOR REFERENCE ONLY		APPROVED BY GK		DESCRIPTION <b>CONNECTION DIAGRAM</b> 3<MOD-DIAM> - WYE START DELTA RUN	
COPYRIGHT (PER REVISION DATE) REGAL BELOIT AMERICA, INC. ALL RIGHTS RESERVED. PROPRIETARY AND CONFIDENTIAL INFORMATION - THIS DOCUMENT IS THE PROPERTY OF REGAL BELOIT AMERICA, INC. ("OWNER") AND CONTAINS OWNER'S PROPRIETARY INFORMATION. ANY PERSON, CORPORATION OR OTHER FIRM RECEIVING IT IS DEEMED, BY RECEIVING IT, TO AGREE THAT IT, AND/OR ANY PART OF IT, SHALL NOT BE DISCLOSED TO ANY PERSON, CORPORATION OR OTHER ENTITY, DUPLICATED, AND/OR USED, EXCEPT AS EXPRESSLY APPROVED IN WRITING IN ADVANCE BY OWNER. THIS DOCUMENT SHALL BE RETURNED TO OWNER UPON REQUEST. IT MAY BE SUBJECT TO CERTAIN RESTRICTIONS UNDER APPLICABLE EXPORT CONTROL LAWS AND REGULATIONS.								DATE 01-18-1994			



P.O. BOX 8003  
 WAUSAU, WI 54401-8003  
 PH. 715-675-3311

DATA VOLTS: 460

**CERTIFICATION DATA SHEET**

CUSTOMER: \_\_\_\_\_ CUSTOMER P.O. #: \_\_\_\_\_  
 ORDER #: \_\_\_\_\_ REFERENCE MODEL #: 444TSTD16034  
 CONN. DIAGRAM: A-EE7340 CAT #: U456A  
 OUTLINE: B-SS509474-1850 CUSTOMER PART #: \_\_\_\_\_  
 WINDING: T444448 NONE 3 MOUNTING: F1/F2 CAPABLE  
 SPEED: \_\_\_\_\_

**TYPICAL MOTOR PERFORMANCE DATA**

HP	KW	SYNC RPM	FL RPM	FRAME	ENCLOSURE	TYPE	KVA CODE	DESIGN
150	112	1800	1785	444TSC	DP	TDS	F	B

PH	HZ	VOLTS	AMPS	START TYPE	DUTY	INSL	S.F.	AMB	ELEV.
3	60	460	170	VYE START DELTA RUN	CONT	F	1.15	40	3300

F.L. EFF	95.8	3/4 LD EFF	95.8	1/2 LD EFF	95.4	GTD EFF	ELECT. TYPE
F.L. PF	86.5	3/4 LD PF	85.0	1/2 LD PF	79.5	95.4	SQ CAGE IND RUN

F.L. TORQUE	LR AMPS @ 460 V	L.R. TORQUE	B.D. TORQUE	F.L. RISE (° C)
442 LB-FT	1,000	600 LB-FT 136%	1,025 LB-FT 232%	37

@ 3 FT.	POWER	ROTOR WK <sup>2</sup>	MAX. LOAD WK <sup>2</sup>	SAFE STALL TIME	STARTS/HOUR	MOTOR WGT
80 dBA	89 dBA	39.5 LB-FT <sup>2</sup>	750 LB-FT <sup>2</sup>	20 SEC.	2	1150 LB.

**\*\*\* SUPPLEMENTAL INFORMATION \*\*\***

DE BRACKET TYPE	ODE BRACKET TYPE	MOUNT TYPE	MOTOR ORIENTATION	SEVERE DUTY	HAZARDOUS LOCATION	DRIP COVER	SCREENS	PAINT
C-FACE	STANDARD	RIGID	HORIZONTAL	NO	NONE	NO	NONE	BLUE (ENAMEL)

BEARINGS		GREASE	SHAFT TYPE	SPECIAL DE	SPECIAL ODE	SHAFT	MATERIAL	FRAME MATERIAL
DE	ODE	POLYREX EM	TS	NONE	NONE	1045 HOT ROLLED (C-204)		CAST IRON
BALL	BALL							
6313	6313							

THERMOSTATS	PROTECTORS	WDG RTD's	BRG RTD's	THERMISTORS	CONTROL	SPACE HEATERS
NONE	NOT	NONE	NONE	NONE	FALSE	NA

R1 (ohms/ph)	R2 (ohms/ph)	X1 (ohms/ph)	X2 (ohms/ph)	Xm (ohms/ph)	VIBRATION (in/sec)	FLOAT
0.021	0.016	0.217	0.184	5.816	0.150	ODE

* N O T E S *	INVERTER TORQUE: NONE INV. HP SPEED RANGE: NONE					
	ENCODER: NONE NONE NONE					
	NONE PPR					
	BRAKE: NONE NONE					
	FT-LB: NA VOLTAGE: NONE					

PREPARED BY: FAREEDA DUDEKULA DATE: 1/7/2019	HZ:
FORM: 3531 REV_4 2/27/06	UL: V-INS, CONST UL REC

Data Sheet

Date: 1/7/2019  
 Customer: \_\_\_\_\_  
 Attention: \_\_\_\_\_  
 Submitted by: FAREEDA DUDEKULA



444TSTD516034

Submittal

Data @ 460 V

Motor Load Data

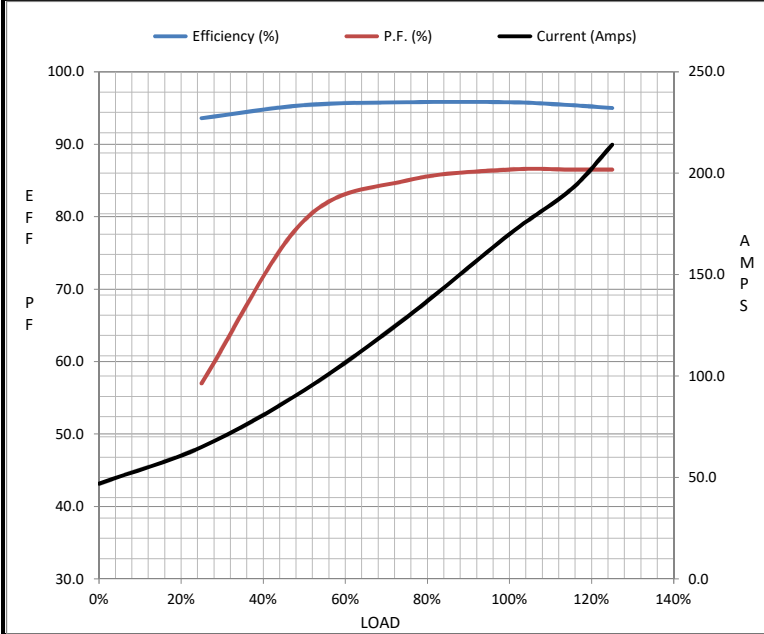
Load	0%	25%	50%	75%	100%	115%	125%	LR
Current (Amps)	47.0	65.0	93.0	129	170	192	214	1,000
Torque (ft-lb)	0.00	110	220	331	442	498	554	600
RPM	1800	1795	1792	1788	1785	1,780	1778	0
Efficiency (%)		93.6	95.4	95.8	95.8	95.4	95.0	
P.F. (%)	7.5	57.0	79.5	85.0	86.5	86.5	86.5	26.0

Motor Speed Data

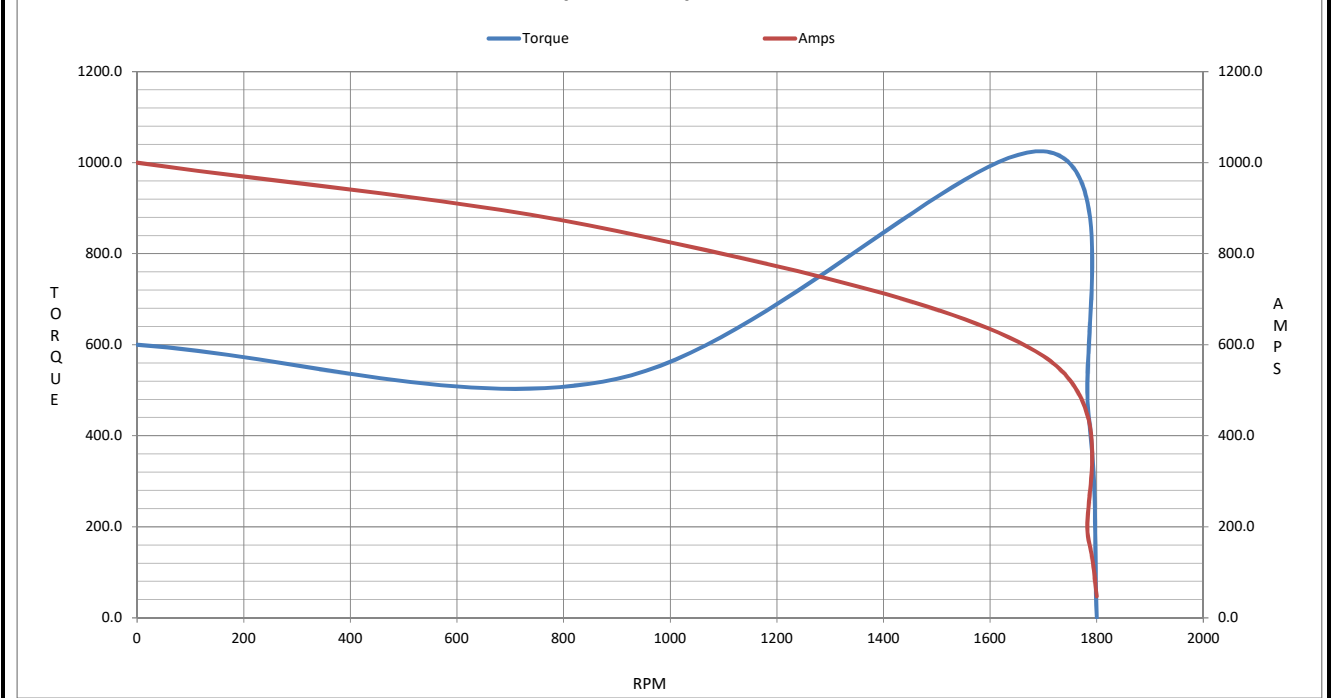
	LR	Pull-Up	BD	Rated	Idle
Speed (RPM)	0	900	1700	1785	1800
Current (Amps)	1,000	850	575	170	47.0
Torque (ft-lb)	600	525	1,025	442	0.00

Information Block

HP	150.0			
Sync. RPM	1800			
Frame	444			
Enclosure	DP			
Construction	TDS			
Voltage	460 V			
Frequency	60 Hz			
Design	B			
LR Code letter	F			
Service Factor	1.15			
Temp Rise @ FL	37 ° C			
Duty	CONT			
Ambient	40 ° C			
Elevation	1,000 feet			
Rotor/Shaft wk <sup>2</sup>	39.5 Lb-Ft <sup>2</sup>			
Ref Wdg	T444448 NONE			
Sound Pressure @ 1M	80 dBA			
VFD Rating	NONE			
Outline Dwg	B-SS509474-1850			
Conn. Diag	A-EE7340			
Additional Specifications:				
0				
0				
EQUIV CKT (OHMS / PHASE)				
R1	R2	X1	X2	Xm
0.0210	0.0160	0.2170	0.1840	5.8160



Speed - Torque Curve



## EC Declaration of Conformity

The undersigned representing  
the manufacturer:

Regal Beloit America  
100 East Randolph St.  
Wausau, WI 54401

and the authorized representative  
established within the Community:

Marathon Electric UK  
6F Thistleton Road Ind. Estate  
Market Overton  
Oakham, Rutland LE15 7PP UK

are committed to providing customers with products that comply with applicable regulations and international protocols to which they are subject, including the requirements of the European Parliament Directive on the Harmonization of the laws relating to electrical equipment designed for use within certain voltage limits (2014/35/EU).

Regal Beloit America declares that the following product(s), to which this declaration relates, are in conformity with the relevant sections of the EC standards listed below.

This statement supersedes any statements previously issued pertaining to the product(s) listed below and is subject to change without notice.

Model No : 444TSTDS16034

(Model No. may contain prefix and/or suffix characters)

Catalog No : U456A

Rework No : N/A

Directives :

Low Voltage Directive 2014/35/EU

Harmonized Standards Used :

EN 60034-1: 2010 (IEC 60034-1: 2010)

EN 60034-5: 2001/A1:2007 (IEC 60034-5: 2000/A1:2006)

Authorized Representative:



Michael A. Logsdon  
Vice President, Technology

Authorized Representative in the Community:



Julian Clark  
Marketing Engineer

Created on 09/01/2022

**CE 22**