

PRODUCT INFORMATION PACKET

marathon®
Motors

Model No: 444TSTD36001
Catalog No: 444TSTD36001
200,3600,DP,444TSC,3/60/460

Miscellaneous

Regal and Marathon are trademarks of Regal Rexnord Corporation or one of its affiliated companies.
©2022 Regal Rexnord Corporation, All Rights Reserved. MC017097E

Regal Rexnord



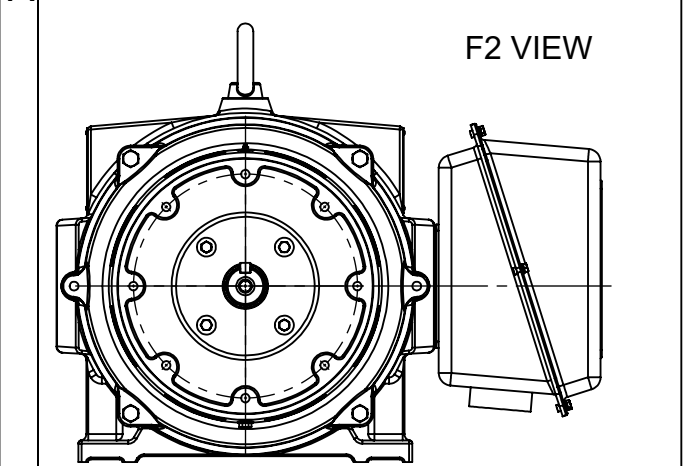
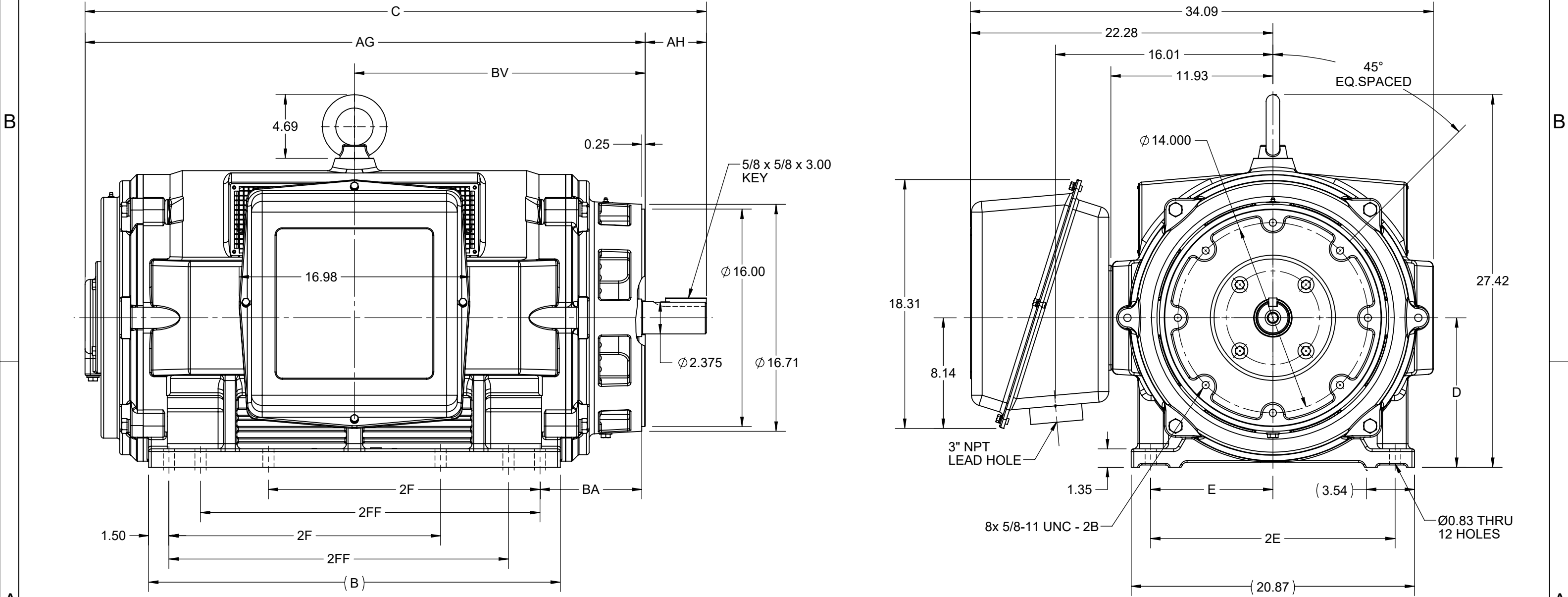
Nameplate Specifications


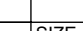
Technical Specifications

Outline Drawing	SS620757-100	Connection Drawing	EE7340
-----------------	--------------	--------------------	--------

This is an uncontrolled document once printed or downloaded and is subject to change without notice. Date Created:02/11/2022

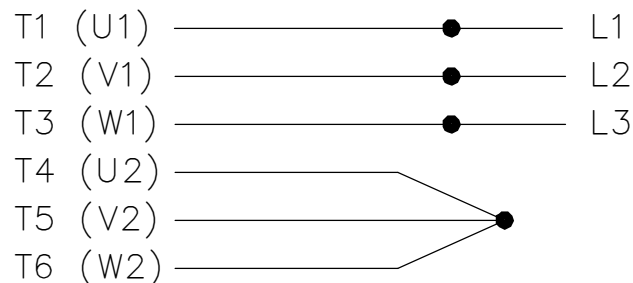
4				3				2				1	
DASH NO.	B	C	D	E	2E	2F	2FF	AG	AH	BA	BV	MOUNTING	FRAME
100	25.20	40.64	11.00	9.00	18.00	14.50	16.50	36.14	4.50	7.50	18.85	F1 OR F2	444/445TSC
200	30.31	45.76				20.00	25.00	41.26			21.41		447/449TSC



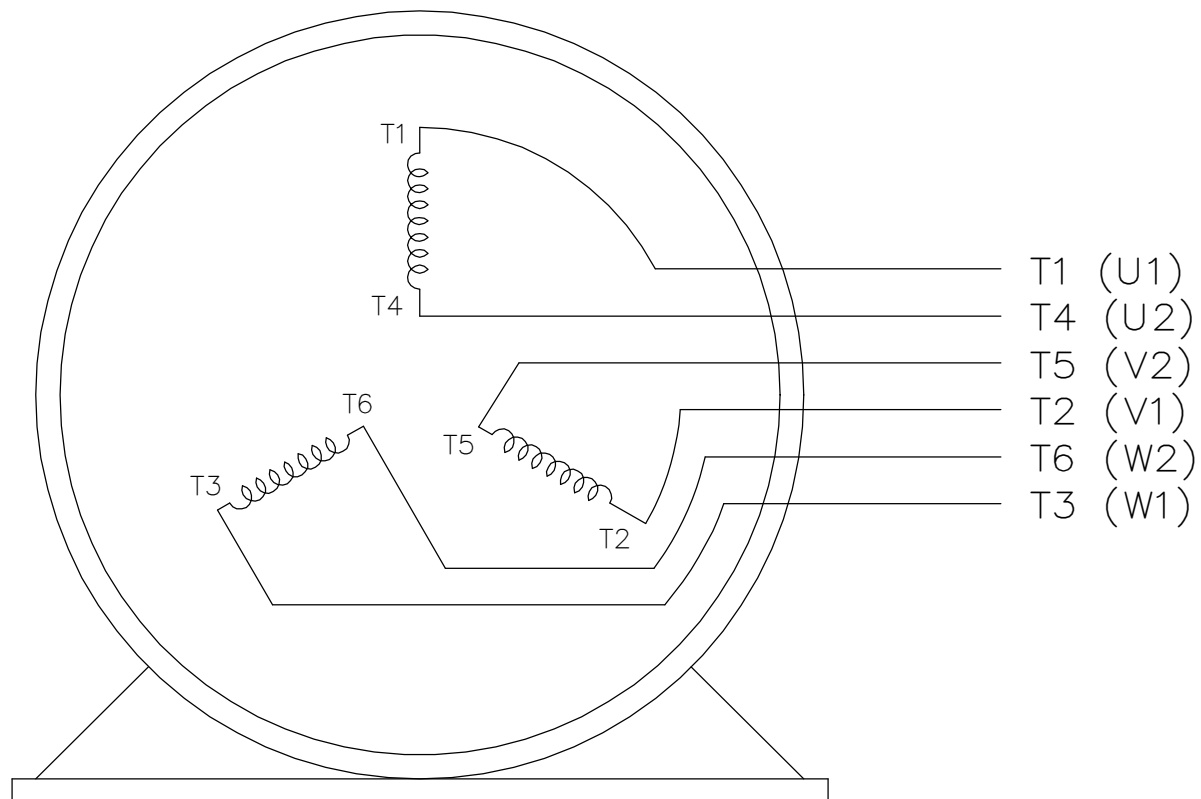
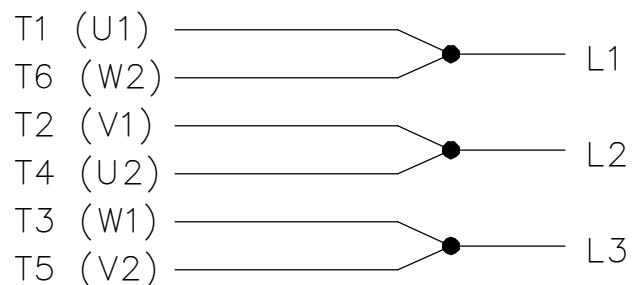
DRAWING REVISION C	REVISION BY GOPI J	REV DATE/© DATE 09/02/2022	PRIMARY DIMENSIONS ARE INCH mm DIMENSIONS IN [BRACKETS] ARE FOR REFERENCE ONLY	DRAWN BY ZXW	 Regal Beloit America, Inc.		
REQUEST NUMBER CR-0006851	APPROVED BY SBD	DATE 09/02/2022		DATE 21/07/2016			
REQUEST NUMBER DESCRIPTION VIEWS AS PER 3D VIEW				APPROVED BY	DESCRIPTION		
COPYRIGHT (PER REVISION DATE) REGAL BELOIT AMERICA, INC. ALL RIGHTS RESERVED. PROPRIETARY AND CONFIDENTIAL INFORMATION - THIS DOCUMENT IS THE PROPERTY OF REGAL BELOIT AMERICA, INC. ("OWNER") AND CONTAINS OWNER'S PROPRIETARY INFORMATION. ANY PERSON, CORPORATION OR OTHER FIRM RECEIVING IT IS DEEMED, BY RECEIVING IT, TO AGREE THAT IT, AND/OR ANY PART OF IT, SHALL NOT BE DISCLOSED TO ANY PERSON, CORPORATION OR OTHER ENTITY, DUPLICATED, AND/OR USED, EXCEPT AS EXPRESSLY APPROVED IN WRITING IN ADVANCE BY OWNER. THIS DOCUMENT SHALL BE RETURNED TO OWNER UPON REQUEST. IT MAY BE SUBJECT TO CERTAIN RESTRICTIONS UNDER APPLICABLE EXPORT CONTROL LAWS AND REGULATIONS.				DATE	OUTLINE		
				444/445/447/449TSC FR NEMA ODP CAST IRON			
				REFERENCE	MATERIAL	PROCESS/FINISH	
			THIRD ANGLE PROJECTION		SIZE B	DRAWING NUMBER SS620757	SHEET 1 OF 1

THREE PHASE
WYE START DELTA RUN

START



RUN



VIEW OF TERMINAL END

NOTE:
IEC LEAD MARKINGS ARE NOTED
IN PARANTHESES

DRAWING REVISION F	REVISION BY RTT	REV DATE/© DATE 05-29-2019	TOLERANCES (EXCEPT AS NOTED): <div>DEC. INCH mm ANGLE</div> <div>.X ±0.1 [±3] ±7° 30"</div> <div>.XX ±0.02 [±0.5]</div> <div>.XXX ±0.005 [±0.13]</div> <div>.XXXX ±0.0005 [±0.013]</div> <div>REMOVE BURRS & BREAK SHARP</div> <div>EDGES: .003/.015 [.08/.38] X 45 °</div> <div>CORNER FILLETS: R.02 [.5]</div> <div>MACHINED SURFACES: 200/ 5.1</div> <div>INCH mm</div> <div>mm DIMENSIONS IN [BRACKETS]</div> <div>ARE FOR REFERENCE ONLY</div>	DRAWN BY LZ	<div><div>REGAL®</div><div>Regal Beloit America, Inc.</div></div>		
ECO ECO-0167538	APPROVED BY JWA	DATE 05-29-2019		DATE 01-06-1994	DESCRIPTION <div>CONNECTION DIAGRAM</div> <div>3<MOD-DIAM> - WYE START DELTA RUN</div>		
ECO DESCRIPTION UPDATED TITLE BLOCK				APPROVED BY GK			
COPYRIGHT (PER REVISION DATE) REGAL BELOIT AMERICA, INC. ALL RIGHTS RESERVED. PROPRIETARY AND CONFIDENTIAL INFORMATION - THIS DOCUMENT IS THE PROPERTY OF REGAL BELOIT AMERICA, INC. ("OWNER") AND CONTAINS OWNER'S PROPRIETARY INFORMATION. ANY PERSON, CORPORATION OR OTHER FIRM RECEIVING IT IS DEEMED, BY RECEIVING IT, TO AGREE THAT IT, AND/OR ANY PART OF IT, SHALL NOT BE DISCLOSED TO ANY PERSON, CORPORATION OR OTHER ENTITY, DUPLICATED, AND/OR USED, EXCEPT AS EXPRESSLY APPROVED IN WRITING IN ADVANCE BY OWNER. THIS DOCUMENT SHALL BE RETURNED TO OWNER UPON REQUEST. IT MAY BE SUBJECT TO CERTAIN RESTRICTIONS UNDER APPLICABLE EXPORT CONTROL LAWS AND REGULATIONS.				DATE 01-18-1994	MATERIAL PROCESS/FINISH		
				REFERENCE			
			THIRD ANGLE PROJECTION	SIZE A	DRAWING NUMBER EE7340	SHEET 1 OF 1	