

# PRODUCT INFORMATION PACKET

Model No: 405TTFS8857

Catalog No: Y822

Other Purpose Motor, 100 HP, 3 Ph, 60 Hz, 460 V, 1800 RPM, 405T Frame, TEFC



Regal and are trademarks of Regal Rexnord Corporation or one of its affiliated companies.  
©2022 Regal Rexnord Corporation, All Rights Reserved. MC017097E

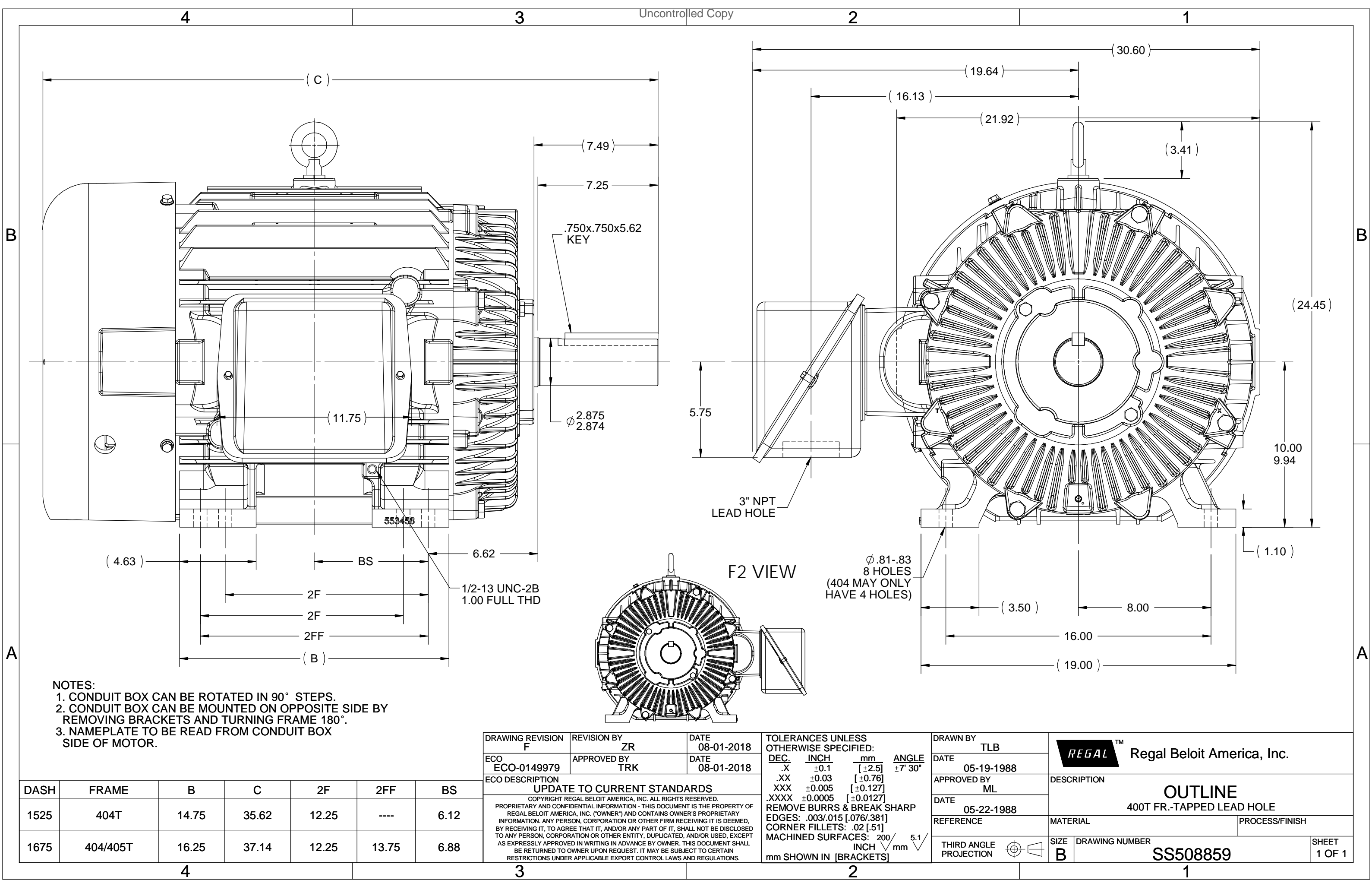
## Nameplate Specifications

Output HP	100 Hp	Output KW	75.0 kW
Frequency	60 Hz	Voltage	460 V
Current	117.0 A	Speed	1775 rpm
Service Factor	1.15	Phase	3
Efficiency	93.6 %	Power Factor	85.5
Duty	Continuous	Insulation Class	F
Design Code	C	KVA Code	G
Frame	405T	Enclosure	Totally Enclosed Fan Cooled
Thermal Protection	No Protection	Ambient Temperature	40 °C
Drive End Bearing Size	NU316	Opp Drive End Bearing Size	6313
UL	No	CSA	Y
CE	Y	IP Code	55
Number of Speeds	1		

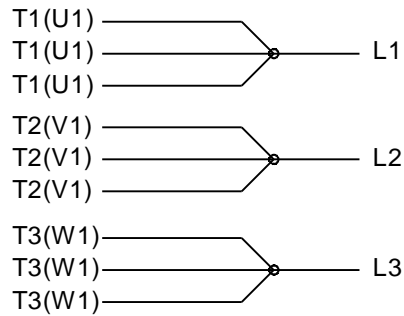
## Technical Specifications

Electrical Type	Squirrel Cage Induction Run	Starting Method	Across The Line
Poles	4	Rotation	Reversible
Resistance Main	.053 Ohms	Mounting	Rigid Base
Motor Orientation	Horizontal	Drive End Bearing	Roller
Opp Drive End Bearing	Ball	Frame Material	Cast Iron
Shaft Type	T	Overall Length	37.14 in
Frame Length	16.75 in	Shaft Diameter	2.875 in
Shaft Extension	7.5 in	Assembly/Box Mounting	F1/F2 CAPABLE
Outline Drawing	B-SS508859-1675	Connection Drawing	A-EE7300U

This is an uncontrolled document once printed or downloaded and is subject to change without notice. Date Created:09/07/2022



## IF MOTOR HAS 9 LEADS



## IF MOTOR HAS 6 LEADS



A-9806 DECAL IF CALLED FOR

## IF MOTOR HAS 12 LEADS



VIEW OF TERMINAL END

DRAWING REVISION L	REVISION BY AJW	DATE 05-04-2015	TOLERANCES UNLESS OTHERWISE SPECIFIED: <div><div>DEC.</div><div>INCH.</div><div>mm</div><div>ANGLE</div></div> <div><div>.X</div><div>±0.1</div><div>[±2.5]</div><div>±7' 30"</div></div> <div><div>.XX</div><div>±0.02</div><div>[±0.51]</div></div> <div><div>XXX</div><div>±0.005</div><div>[±0.127]</div></div> <div><div>.XXXX</div><div>±0.0005</div><div>[±0.0127]</div></div> <div>REMOVE BURRS &amp; BREAK SHARP EDGES: .003/.015 [.076/.381] X 45° CORNER FILLETS: R.02 [.51] MACHINED SURFACES: 200<sup>INCH</sup> 5.1<sup>mm</sup> mm SHOWN IN [BRACKETS]</div>		DRAWN BY DRS	<div><div>REGAL™</div><div>Regal Beloit America, Inc.</div></div>	
ECO ECO-0077067	APPROVED BY EWH	DATE 05-05-2015			DATE 09-27-1996	DESCRIPTION	
ECO DESCRIPTION UPDATED TO SOLIDWORKS			APPROVED BY GK		CONN DIAGRAM-EXTERNAL 3Ø SINDLE VOLTAGE		
<div><div>COPYRIGHT REGAL BELOIT AMERICA, INC. ALL RIGHTS RESERVED. PROPRIETARY AND CONFIDENTIAL INFORMATION - THIS DOCUMENT IS THE PROPERTY OF REGAL BELOIT AMERICA, INC. ("OWNER") AND CONTAINS OWNER'S PROPRIETARY INFORMATION. ANY PERSON, CORPORATION OR OTHER FIRM RECEIVING IT IS DEEMED, BY RECEIVING IT, TO AGREE THAT IT, AND/OR ANY PART OF IT, SHALL NOT BE DISCLOSED TO ANY PERSON, CORPORATION OR OTHER ENTITY, DUPLICATED, AND/OR USED, EXCEPT AS EXPRESSLY APPROVED IN WRITING IN ADVANCE BY OWNER. THIS DOCUMENT SHALL BE RETURNED TO OWNER UPON REQUEST. IT MAY BE SUBJECT TO CERTAIN RESTRICTIONS UNDER APPLICABLE EXPORT CONTROL LAWS AND REGULATIONS.</div></div>			DATE 09-30-1996	DESCRIPTION			
			REFERENCE	MATERIAL	PROCESS/FINISH		
			THIRD ANGLE PROJECTION	<div><div><div></div><div></div></div></div>	SIZE A	DRAWING NUMBER EE7300U	SHEET 1 OF 1