

# PRODUCT INFORMATION PACKET

**marathon®**  
Motors

Model No: 405TTDS4086

Catalog No: E749

Other Purpose Motor, 75 & 60 HP, 3 Ph, 60 & 50 Hz, 230/460 & 190/380 V, 1200 & 1000 RPM,  
405T Frame, DP

Regal and Marathon are trademarks of Regal Rexnord Corporation or one of its affiliated companies.

©2023 Regal Rexnord Corporation, All Rights Reserved. MC017097E

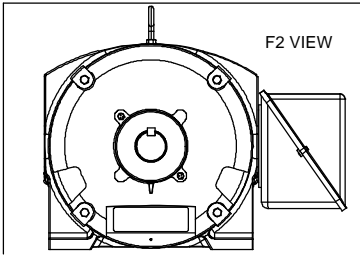
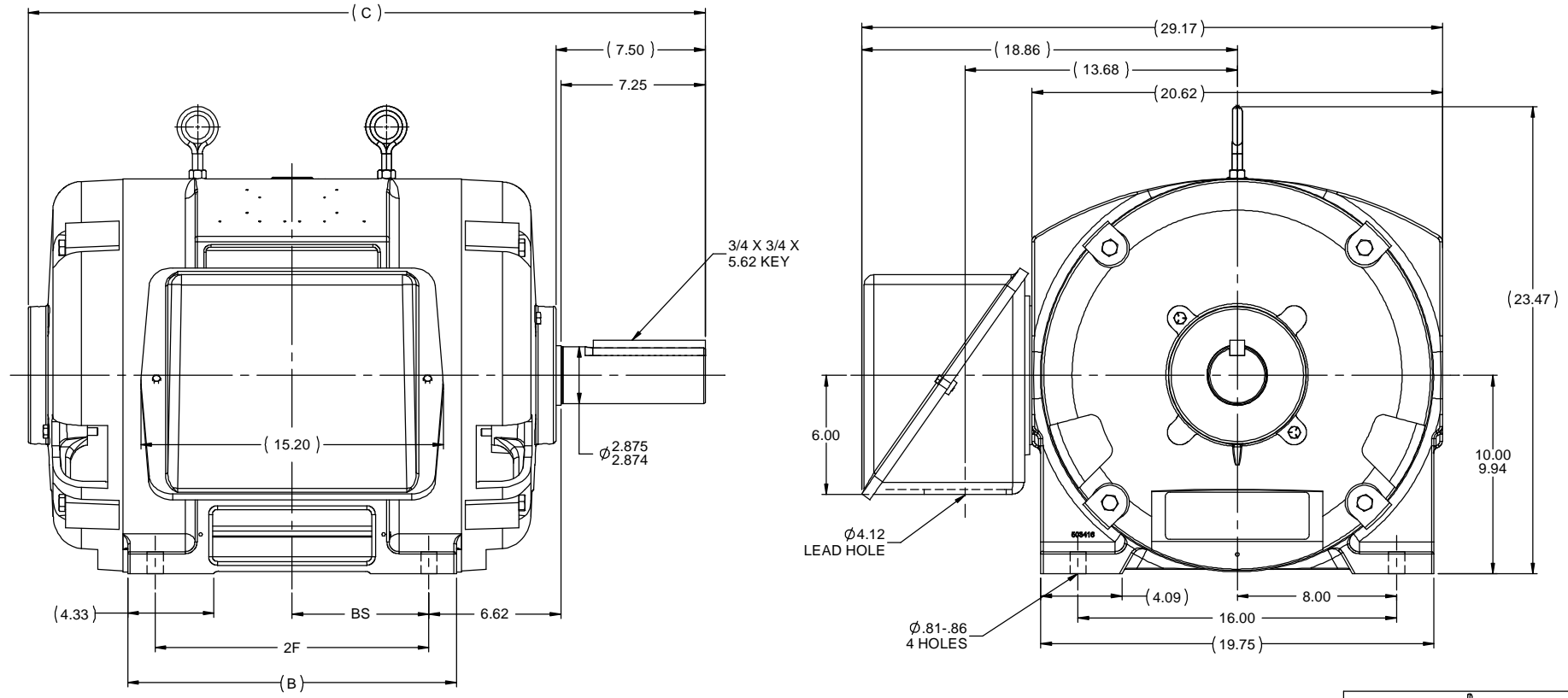
**RegalRexnord**

### Nameplate Specifications

Phase	<b>3</b>	Output HP	<b>75 &amp; 60 Hp</b>
Output KW	<b>56.0 &amp; 45.0 kW</b>	Voltage	<b>230/460 &amp; 190/380 V</b>
Speed	<b>1185 &amp; 985 rpm</b>	Service Factor	<b>1.15 &amp; 1.15</b>
Frame	<b>405T</b>	Enclosure	<b>Drip Proof</b>
Thermal Protection	<b>No Protection</b>	Efficiency	<b>93.6 &amp; 92.4 %</b>
Ambient Temperature	<b>40 °C</b>	Frequency	<b>60 &amp; 50 Hz</b>
Current	<b>176/88 &amp; 172/86 A</b>	Power Factor	<b>85.5</b>
Duty	<b>Continuous</b>	Insulation Class	<b>B</b>
Design Code	<b>B</b>	KVA Code	<b>G</b>
Drive End Bearing Size	<b>6316</b>	Opp Drive End Bearing Size	<b>6313</b>
UL	<b>Recognized</b>	CSA	<b>Y</b>
CE	<b>Y</b>	IP Code	<b>12</b>
Number of Speeds	<b>1</b>		

### Technical Specifications

Electrical Type	<b>Squirrel Cage Induction Run</b>	Starting Method	<b>Across The Line</b>
Poles	<b>6</b>	Rotation	<b>Reversible</b>
Resistance Main	<b>.102 Ohms</b>	Mounting	<b>Rigid Base</b>
Motor Orientation	<b>Horizontal</b>	Drive End Bearing	<b>Ball</b>
Opp Drive End Bearing	<b>Ball</b>	Frame Material	<b>Cast Iron</b>
Shaft Type	<b>T</b>	Overall Length	<b>34.01 in</b>
Frame Length	<b>17.00 in</b>	Shaft Diameter	<b>2.875 in</b>
Shaft Extension	<b>7.5 in</b>	Assembly/Box Mounting	<b>F1/F2 CAPABLE</b>
Connection Drawing	<b>A-EE7308</b>	Outline Drawing	<b>B-SS509599-1700</b>



- NOTES:  
 1. CONDUIT BOX CAN BE ROTATED IN 90 ° STEPS.  
 2. CONDUIT BOX CAN BE MOUNTED ON OPPOSITE SIDE BY REMOVING BRACKETS AND TURNING FRAME 180 °  
 3. NAMEPLATES TO BE READ FROM CONDUIT BOX SIDE OF MOTOR.

DASH	FRAME	B	C	BS	2F
1550	404T	15.00	32.51	6.12	12.25
1700	405T	16.50	34.01	6.88	13.75

REVISION		BY & DATE		CHK LANG		RFP		PREV		NETWORK FILE NAME		DRAWING NO		PAGE OF	
11	ADDED F2 VIEW	TJW	1/6/2010	CTO	DEC	INCHES									
10	REDRAWN IN AUTOCAD	TAT	6/29/2004	ML	X	±.1									
9	REPLACED ONE EYEBOLT WITH TWO CN28063	BJW	2/10/2000	XX		±.03									
8	UPDATED C'BOX GEOMETRY CN28063	TRB	2/10/2000	XXX		±.005									
7	REDRAWN ON CADD	TLB	2/24/1988	XXXX		±.0005									
NO						±7'30"									



TITLE OUTLINE  
400T FR. - DR.PR. - (STD0)

DRAWN TJB 2/24/1988  
 CHK JL 2/24/1988  
 APPR ML 2/24/1988  
 SCALE 3:16  
 REF  
 FMF



SIZE **B** DRAWING NO **SS509599** REV **11**



NO.	REVISION	BY & DATE	CHK	ANG	TOLERANCES UNLESS SPECIFIED		FINISH	DRAWN RM	ML	
					DEC.	INCHES				
5	CHG TO REGAL LOGO	SL 09/10/2015	AB					RM	11/20/1990	
4	REVISED IEC NOTATIONS	MSG 11/15/2011	CMN	.X	±.1			CHK	ML 11/21/1990	
3	ADDED IEC NOTATIONS... (U1), (V1) ETC. MU95194	MSG 5/10/2010	MJS	.XX	±.02			APPD	SAS 04/24/2003	
2	ADDED THE OPTIONAL CORD CONNECTION MU46318	RDH 04/24/2003	DRS	.XXX	±.005			SCALE	1=1	
1	REDRAWN	RM 11/20/1990		.XXXX	±.0005			REF		
					±7'30"			FMP		
THIS DRAWING IN DESIGN AND DETAIL IS OUR PROPERTY AND MUST NOT BE USED EXCEPT IN CONNECTION WITH OUR WORK ALL RIGHTS OF DESIGN AND INVENTION ARE RESERVED THIS IS AN ELECTRONICALLY GENERATED DOCUMENT - DO NOT SCALE THIS PRINT							RFP	CAD FILE ee7308	SIZE	DRAWING NO. PAGE OF REV.
							DIST WP		A	EE7308 5



TITLE CONNECTION DIAGRAM  
3Ø - DUAL VOLTAGE MOTOR