

PRODUCT INFORMATION PACKET



Model No: 405TTDS4036

Catalog No: E742

125 HP General Purpose Motor, 3 phase, 1800 RPM, 460 V, 405T Frame, ODP
General Purpose Motors

Regal and Marathon are trademarks of Regal Rexnord Corporation or one of its affiliated companies.
©2021 Regal Rexnord Corporation, All Rights Reserved. MC017097E



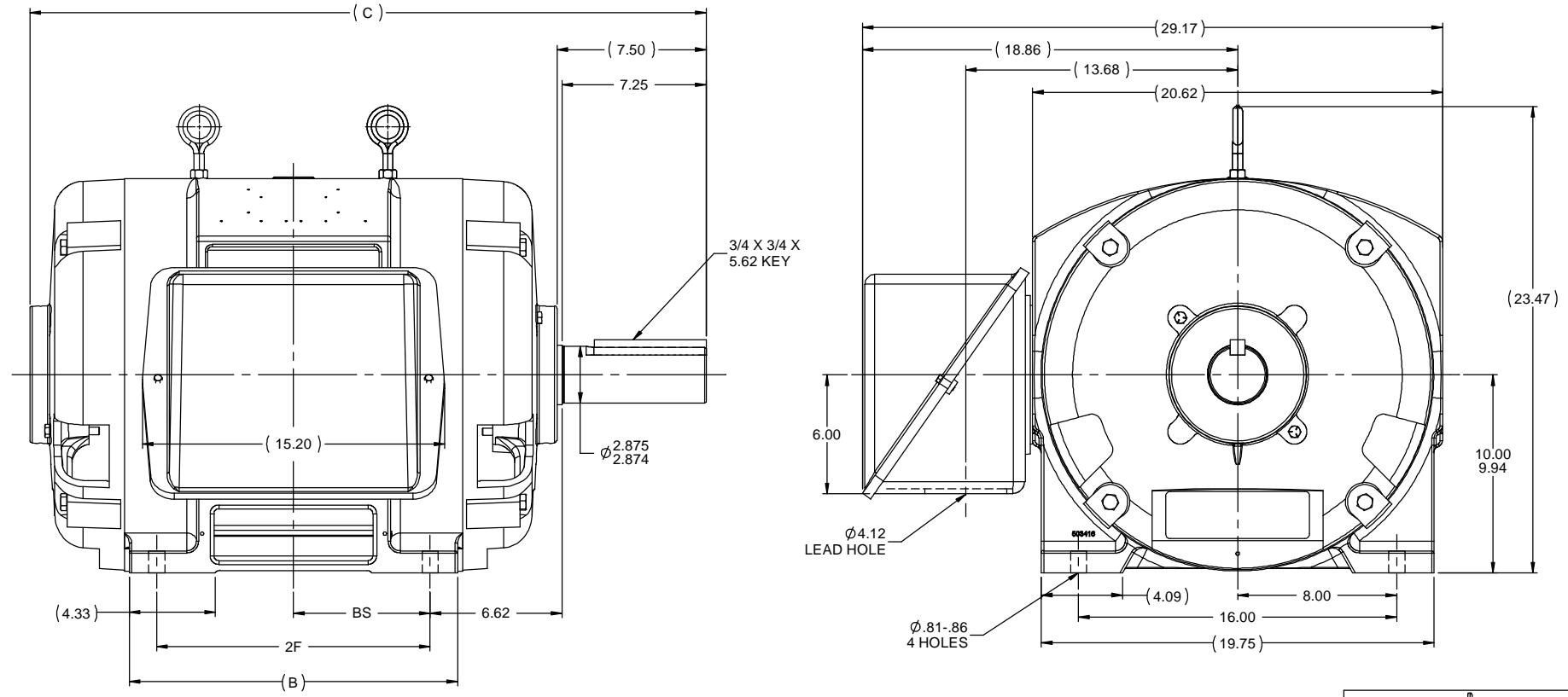
Nameplate Specifications

Output HP	125 Hp	Output KW	93.0 kW
Frequency	60 Hz	Voltage	460 V
Current	141.0 A	Speed	1782 rpm
Service Factor	1.15	Phase	3
Efficiency	95.4 %	Power Factor	86
Duty	Continuous	Insulation Class	B
Design Code	B	KVA Code	G
Frame	405T	Enclosure	Drip Proof
Thermal Protection	No	Ambient Temperature	40 °C
Drive End Bearing Size	6316	Opp Drive End Bearing Size	6313
UL	Recognized	CSA	Y
CE	Y	IP Code	12
Number of Speeds	1		

Technical Specifications


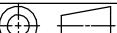
Electrical Type	Squirrel Cage Induction Run	Starting Method	Part Wdg Start
Poles	4	Rotation	Reversible
Resistance Main	.052 Ohms	Mounting	Rigid Base
Motor Orientation	Horizontal	Drive End Bearing	Ball
Opp Drive End Bearing	Ball	Frame Material	Cast Iron
Shaft Type	T	Overall Length	34.01 in
Frame Length	17.00 in	Shaft Diameter	2.875 in
Shaft Extension	7.5 in	Assembly/Box Mounting	F1/F2 CAPABLE
Connection Drawing	A-EE7341C	Outline Drawing	B-SS509599-1700

This is an uncontrolled document once printed or downloaded and is subject to change without notice. Date Created:10/12/2021



NOTES:
 1. CONDUIT BOX CAN BE ROTATED IN 90 ° STEPS.
 2. CONDUIT BOX CAN BE MOUNTED ON OPPOSITE SIDE BY REMOVING BRACKETS AND TURNING FRAME 180 °
 3. NAMEPLATES TO BE READ FROM CONDUIT BOX SIDE OF MOTOR.

DASH	FRAME	B	C	BS	2F		
1550	404T	15.00	32.51	6.12	12.25		
1700	405T	16.50	34.01	6.88	13.75		

				TOLERANCES UNLESS SPECIFIED				DRAWN TJB 2/24/1988	
11	ADDED F2 VIEW	TJW 1/6/2010	CTO	DEC	INCHES			CHK	JL 2/24/1988
10	REDRAWN IN AUTOCAD	TAT 6/29/2004	ML	X	±.1			APPR	ML 2/24/1988
9	REPLACED ONE EYEBOLT WITH TWO CN28063	BJW 2/10/2000		XX	±.03	TITLE OUTLINE		SCALE	3:16
8	UPDATED C'BOX GEOMETRY CN28063	TRB 2/10/2000		XXX	±.005	400T FR. - DR.PR. - (STD0		REF	
7	REDRAWN ON CADD	TLB 2/24/1988		XXXX	±.0005	MATL		FMF	
NO	REVISION		BY & DATE		CHK	ANG	±7°30"	FINISH	PAGE OF
	THIRD ANGLE PROJECTION				RFP	PREV		SIZE	DRAWING NO
					NETWORK FILE NAME		SS509599	B	SS509599
									REV 11

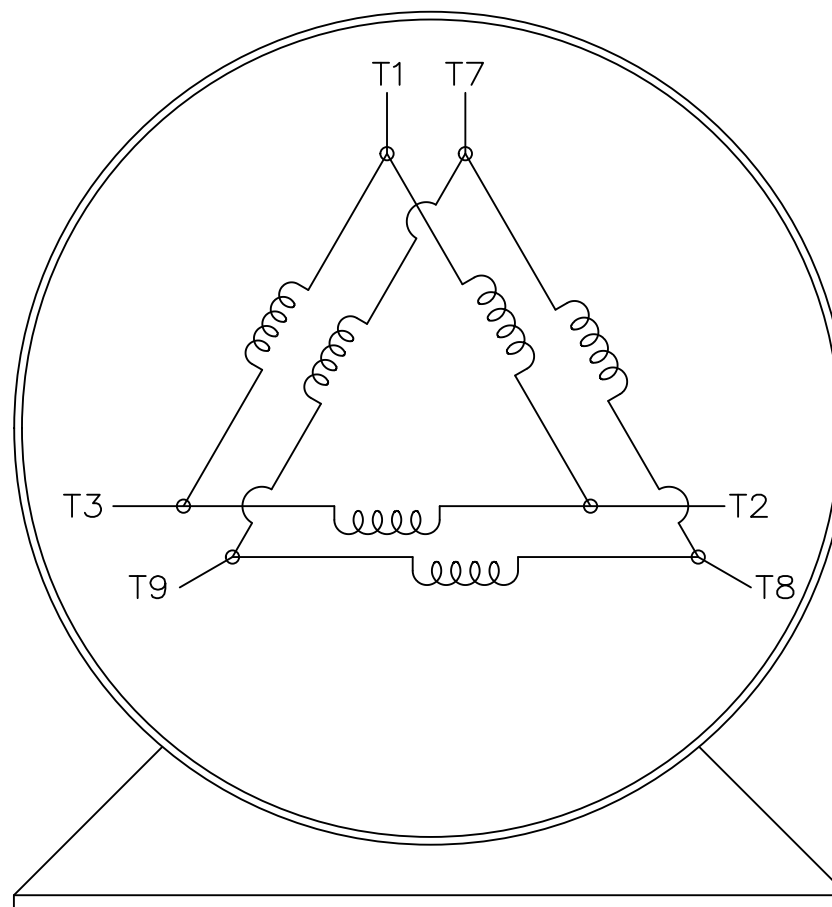
THREE PHASE – PART WINDING START DELTA – 6 LEADS

START

CONNECT T1 TO LINE 1
CONNECT T2 TO LINE 2
CONNECT T3 TO LINE 3
T7–T8–T9 OPEN

RUN

CONNECT T1&T7 TO LINE 1
CONNECT T2&T8 TO LINE 2
CONNECT T3&T9 TO LINE 3



VIEW OF TERMINAL END


IF MOTOR HAS 2 T'S

START

CONNECT T1,T1 TO LINE 1
CONNECT T2,T2 TO LINE 2
CONNECT T3,T3 TO LINE 3
T7,T7–T8,T8–T9,T9 OPEN

RUN

CONNECT T1,T1&T7,T7 TO LINE 1
CONNECT T2,T2&T8,T8 TO LINE 2
CONNECT T3,T3&T9,T9 TO LINE 3

			TOLERANCES UNLESS SPECIFIED		 REGAL - BELOIT CORPORATION	DRAWN BLR 03-09-1998		
			DEC.	INCHES		CHK	ML	03-23-1998
			.X	±	—		APPD	GK 03-23-1998
			.XX	±	—	TITLE CONNECTION DIAGRAM 3ø – 6 LEADS		
E	NOTE ADDED FOR 2 T'S	NAR 17-12-2020	RC	.XXX	±			
D	RE-DRAWN WITH REGAL LOGO ECO-0110493	WGJ 09-30-2016	EMH	.XXXX	±	MAT'L.		
NO.	REVISION	BY & DATE	CHK	ANG	±	FINISH		
THIS DRAWING IN DESIGN AND DETAIL IS OUR PROPERTY AND MUST NOT BE USED EXCEPT IN CONNECTION WITH OUR WORK ALL RIGHTS OF DESIGN AND INVENTION ARE RESERVED THIS IS AN ELECTRONICALLY GENERATED DOCUMENT – DO NOT SCALE THIS PRINT			RFP			SIZE	DRAWING NO.	PAGE OF
			DIST			A	EE7341C	REV. E