

PRODUCT INFORMATION PACKET



Model No: 405TSTDS4001

Catalog No: E755

150 HP General Purpose Motor, 3 phase, 3600 RPM, 460 V, 405TS Frame, ODP
General Purpose Motors

Regal and Marathon are trademarks of Regal Rexnord Corporation or one of its affiliated companies.
©2021 Regal Rexnord Corporation, All Rights Reserved. MC017097E



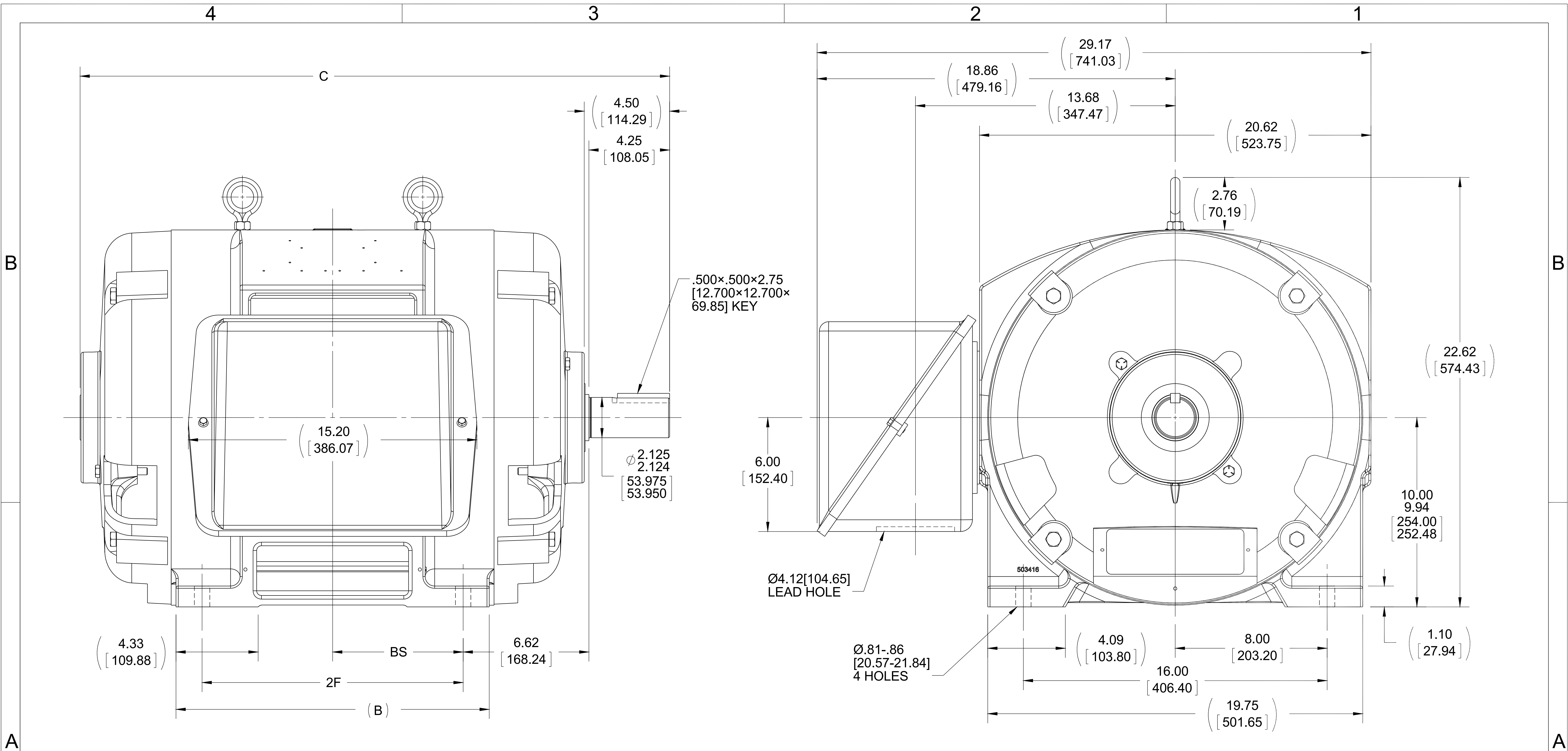
Nameplate Specifications

Output HP	150 Hp	Output KW	112.0 kW
Frequency	60 Hz	Voltage	460 V
Current	169.0 A	Speed	3560 rpm
Service Factor	1.15	Phase	3
Efficiency	93.6 %	Power Factor	89
Duty	Continuous	Insulation Class	B
Design Code	B	KVA Code	F
Frame	405TS	Enclosure	Drip Proof
Thermal Protection	No	Ambient Temperature	40 °C
Drive End Bearing Size	6313	Opp Drive End Bearing Size	6313
UL	Recognized	CSA	Y
CE	Y	IP Code	12
Number of Speeds	1		


Technical Specifications

Electrical Type	Squirrel Cage Induction Run	Starting Method	Part Wdg Start
Poles	2	Rotation	Reversible
Resistance Main	.049 Ohms	Mounting	Rigid Base
Motor Orientation	Horizontal	Drive End Bearing	Ball
Opp Drive End Bearing	Ball	Frame Material	Cast Iron
Shaft Type	TS	Overall Length	31.06 in
Frame Length	17.00 in	Shaft Diameter	2.125 in
Shaft Extension	4.5 in	Assembly/Box Mounting	F1/F2 CAPABLE
Connection Drawing	A-EE7341C	Outline Drawing	B-SS509257-1700

This is an uncontrolled document once printed or downloaded and is subject to change without notice. Date Created:10/12/2021



DASH	FRAME	B	C	2F	BS
1550	404TS	15.00 [381.00]	29.56 [750.82]	12.25 [311.15]	6.12 [155.45]
1700	405TS	16.50 [419.10]	31.06 [788.92]	13.75 [349.25]	6.88 [174.75]

DRAWING REVISION K		REVISION BY AJW		DATE 09-28-2015		TOLERANCES UNLESS OTHERWISE SPECIFIED: <div><div>DEC.</div><div>INCH</div><div>mm</div><div>ANGLE</div></div> <div><div>.X</div><div>±0.1</div><div>[±2.5]</div><div>±7° 30"</div></div> <div><div>.XX</div><div>±0.02</div><div>[±0.51]</div></div> <div><div>.XXX</div><div>±0.005</div><div>[±0.127]</div></div> <div><div>.XXXX</div><div>±0.0005</div><div>[±0.0127]</div></div> <div>REMOVE BURRS & BREAK SHARP EDGES: .003/.015 [0.076/.381] X 45°</div> <div>CORNER FILLETS: R.02 [51]</div> <div>MACHINED SURFACES: 200</div> <div>INCH</div> <div>5.1</div> <div>mm</div> <div>mm SHOWN IN [BRACKETS]</div> <td colspan="2">DRAWN BY TLB</td> <td colspan="4" rowspan="2"><div><div>REGAL™</div><div>Regal Beloit America, Inc.</div></div></td>				DRAWN BY TLB		<div><div>REGAL™</div><div>Regal Beloit America, Inc.</div></div>			
DATE 02-24-1988		APPROVED BY ML		DESCRIPTION <div>OUTLINE</div> <div>400TS FR.-DR.PR.-(STD)</div>											
ECO ECO-0085893		APPROVED BY JHA		DATE 09-28-2015						DATE 02-24-1988		REFERENCE		MATERIAL	
ECO DESCRIPTION UPDATED TO CURRENT STANDARDS COPYRIGHT REGAL BELOIT AMERICA, INC. ALL RIGHTS RESERVED. PROPRIETARY AND CONFIDENTIAL INFORMATION - THIS DOCUMENT IS THE PROPERTY OF REGAL BELOIT AMERICA, INC. ("OWNER") AND CONTAINS OWNER'S PROPRIETARY INFORMATION. ANY PERSON, CORPORATION OR OTHER FIRM RECEIVING IT IS DEEMED, BY RECEIVING IT, TO AGREE THAT IT, AND/OR ANY PART OF IT, SHALL NOT BE DISCLOSED TO ANY PERSON, CORPORATION OR OTHER ENTITY, DUPLICATED, AND/OR USED, EXCEPT AS EXPRESSLY APPROVED IN WRITING IN ADVANCE BY OWNER. THIS DOCUMENT SHALL BE RETURNED TO OWNER UPON REQUEST. IT MAY BE SUBJECT TO CERTAIN RESTRICTIONS UNDER APPLICABLE EXPORT CONTROL LAWS AND REGULATIONS.						THIRD ANGLE PROJECTION				SIZE B		DRAWING NUMBER SS509257		SHEET 1 OF 1	

START

CONNECT T1 TO LINE 1
 CONNECT T2 TO LINE 2
 CONNECT T3 TO LINE 3
 T7-T8-T9 OPEN

RUN

CONNECT T1&T7 TO LINE 1
 CONNECT T2&T8 TO LINE 2
 CONNECT T3&T9 TO LINE 3

IF MOTOR HAS 2 T'S

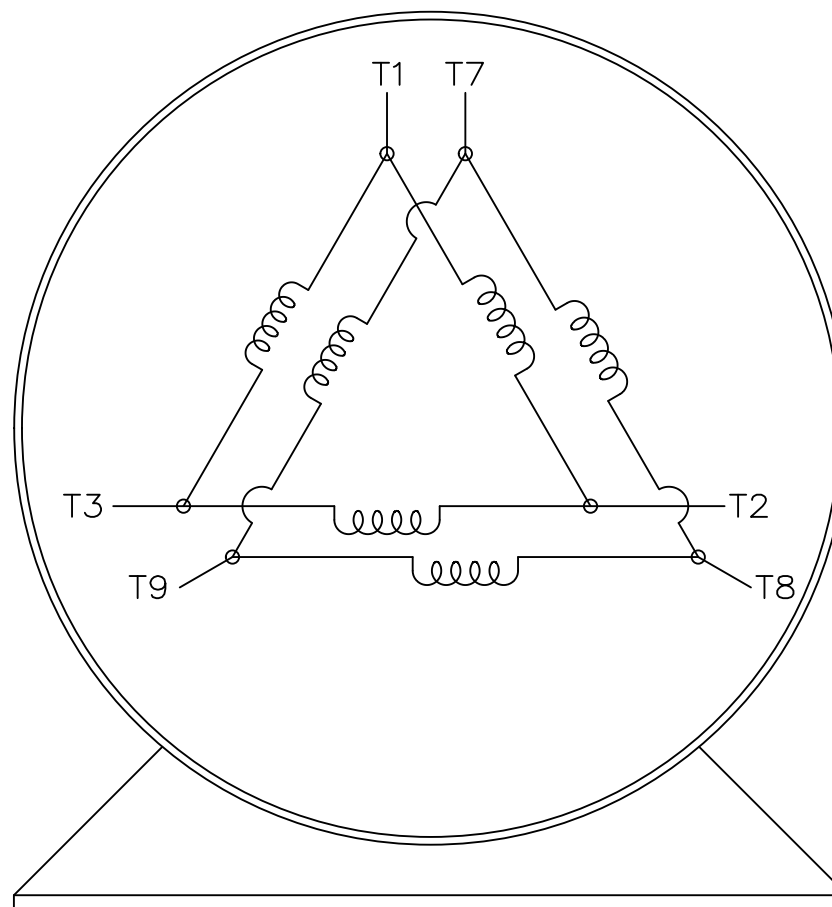
START

CONNECT T1,T1 TO LINE 1
 CONNECT T2,T2 TO LINE 2
 CONNECT T3,T3 TO LINE 3
 T7,T7-T8,T8-T9,T9 OPEN


RUN

CONNECT T1,T1&T7,T7 TO LINE 1
 CONNECT T2,T2&T8,T8 TO LINE 2
 CONNECT T3,T3&T9,T9 TO LINE 3

THREE PHASE – PART WINDING START DELTA – 6 LEADS



VIEW OF TERMINAL END

			TOLERANCES UNLESS SPECIFIED		 REGAL-BELOIT CORPORATION	DRAWN BLR 03-09-1998		
			DEC.	INCHES		CHK	ML	03-23-1998
			.X	± -		APPD	GK	03-23-1998
			.XX	± -	TITLE CONNECTION DIAGRAM 3ø - 6 LEADS		SCALE	1=1
E	NOTE ADDED FOR 2 T'S	NAR 17-12-2020	RC	.XXX			REF	
D	RE-DRAWN WITH REGAL LOGO ECO-0110493	WGJ 09-30-2016	EMH	.XXXX	MAT'L.		FMF	
NO.	REVISION	BY & DATE	CHK	ANG	FINISH		PREV	
THIS DRAWING IN DESIGN AND DETAIL IS OUR PROPERTY AND MUST NOT BE USED EXCEPT IN CONNECTION WITH OUR WORK ALL RIGHTS OF DESIGN AND INVENTION ARE RESERVED THIS IS AN ELECTRONICALLY GENERATED DOCUMENT – DO NOT SCALE THIS PRINT			RFP		CAD FILE EE7341C	SIZE	DRAWING NO.	PAGE OF
			DIST			A	EE7341C	REV.
								E