

PRODUCT INFORMATION PACKET

Model No: 405TSTDCD4334
Catalog No: U532B
125,1800,DP,405TS,3/60/460

Regal and are trademarks of Regal Rexnord Corporation or one of its affiliated companies.
©2022 Regal Rexnord Corporation, All Rights Reserved. MC017097E



Nameplate Specifications

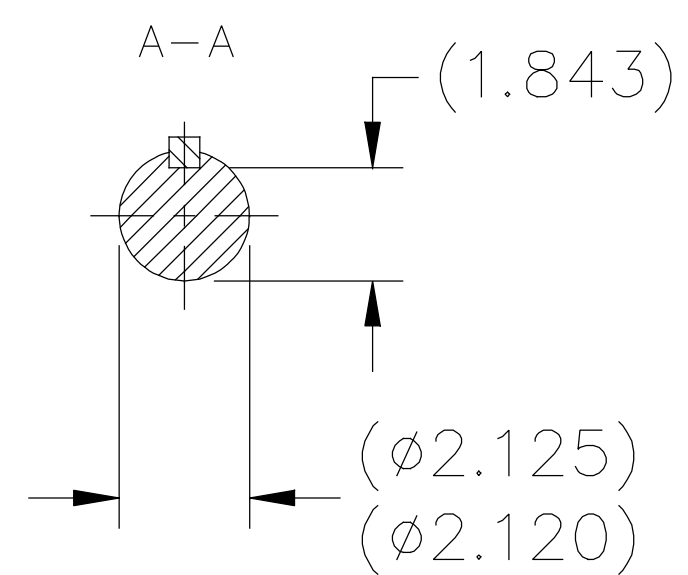
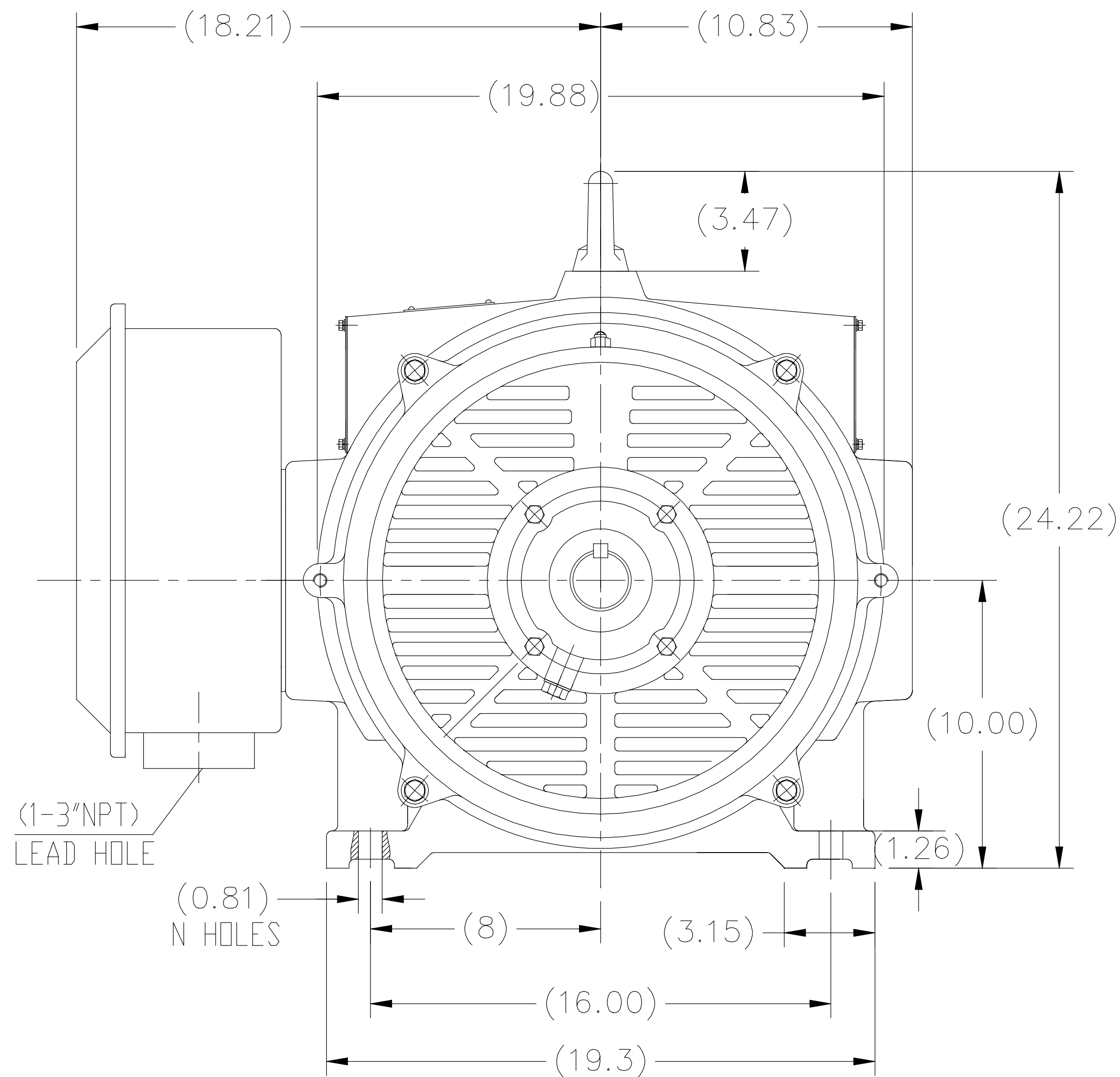
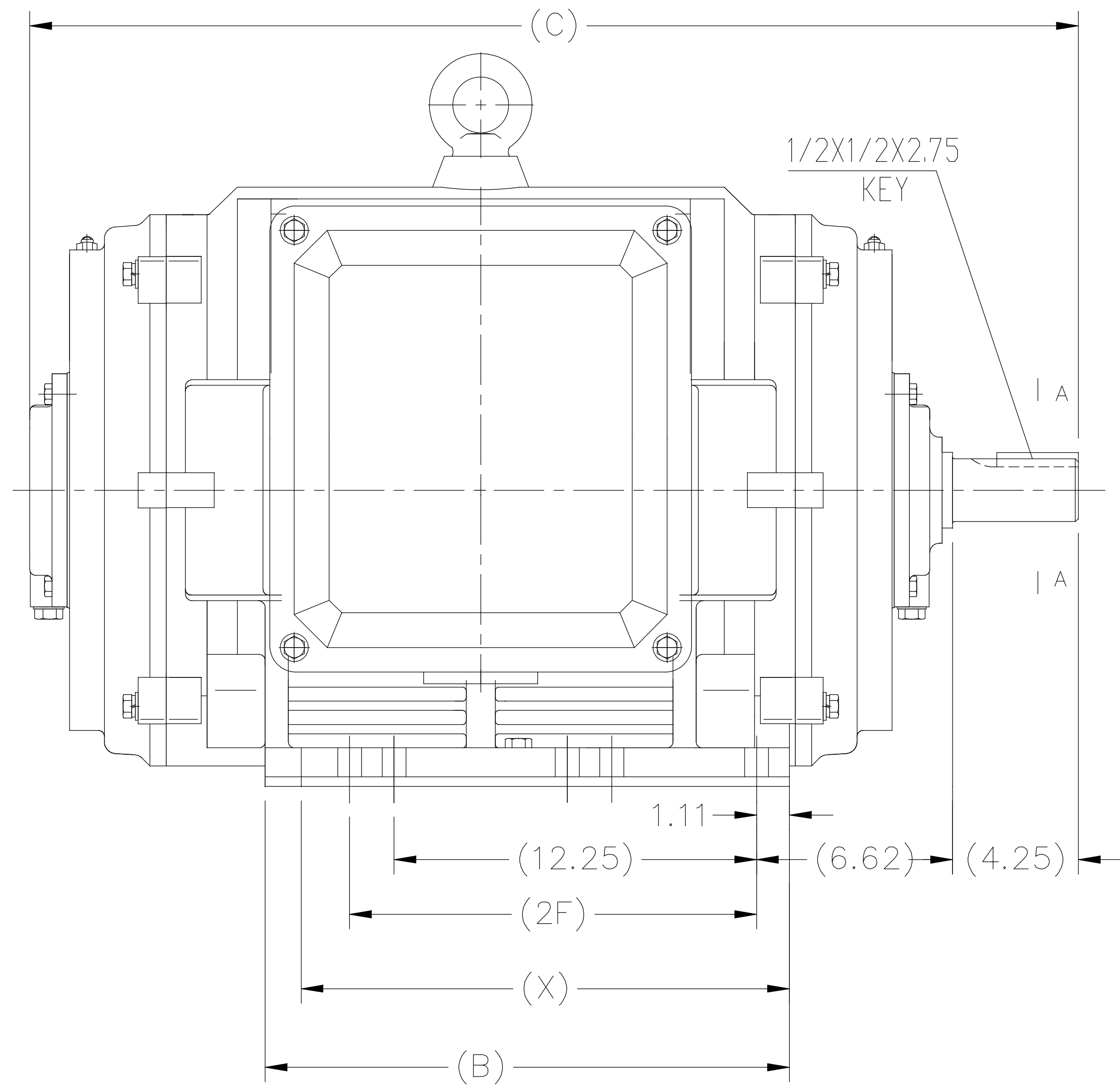
| | | | |
|------------------------|---------------|----------------------------|------------|
| Output HP | 125 Hp | Output KW | 93.0 kW |
| Frequency | 60 Hz | Voltage | 460 V |
| Current | 141.0 A | Speed | 1783 rpm |
| Service Factor | 1.15 | Phase | 3 |
| Efficiency | 94.5 % | Power Factor | 88 |
| Duty | Continuous | Insulation Class | F |
| Design Code | B | KVA Code | G |
| Frame | 405TS | Enclosure | Drip Proof |
| Thermal Protection | No Protection | Ambient Temperature | 50 °C |
| Drive End Bearing Size | 6316 | Opp Drive End Bearing Size | 6314 |
| UL | Listed | CSA | Y |
| CE | Y | IP Code | 23 |
| Number of Speeds | 1 | | |

Technical Specifications

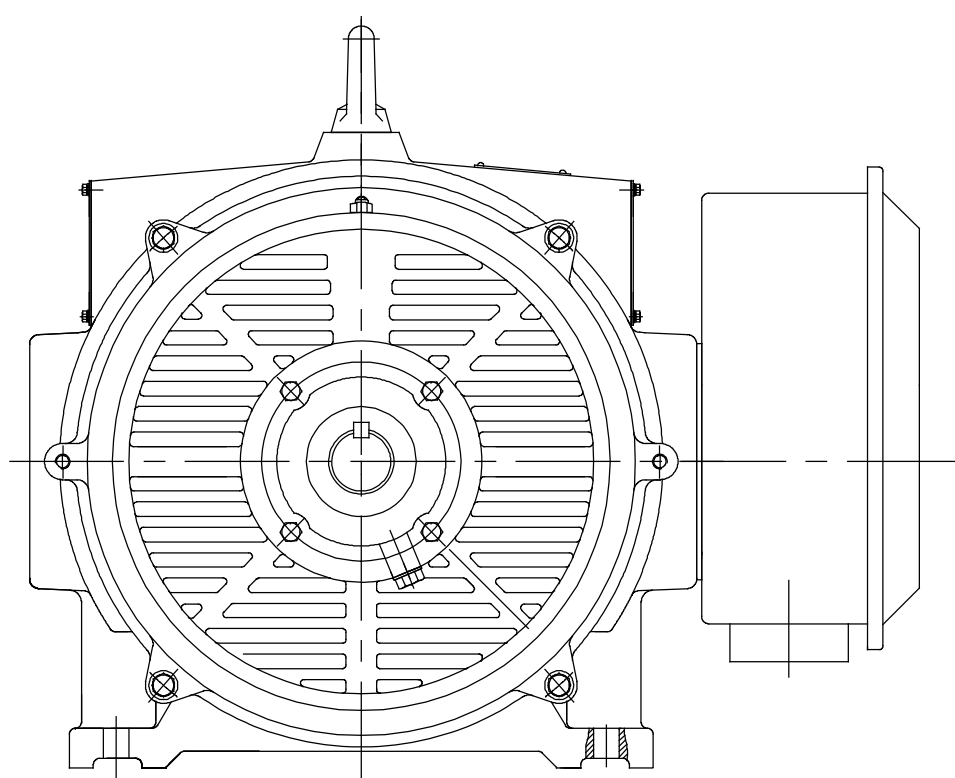
| | | | |
|-----------------------|-----------------------------|--------------------|--------------------------------------|
| Electrical Type | Squirrel Cage Induction Run | Starting Method | Part Wdg Start & Wye Start Delta Run |
| Poles | 4 | Rotation | Selective Clockwise |
| Resistance Main | .064 Ohms | Mounting | Rigid Base |
| Motor Orientation | Horizontal | Drive End Bearing | Ball |
| Opp Drive End Bearing | Ball | Frame Material | Cast Iron |
| Shaft Type | TS | Shaft Diameter | 2.125 in |
| Assembly/Box Mounting | F1/F2 CAPABLE | | |
| Outline Drawing | SS620909 | Connection Drawing | EE7300BH |

This is an uncontrolled document once printed or downloaded and is subject to change without notice. Date Created:09/05/2022

SS620909



F2 MOUNTING



| | | | | |
|-------|-------|-------|-------|-------|
| 404TS | 33.86 | 16.22 | N/A | 15.00 |
| 405TS | 35.44 | 17.72 | 13.75 | 16.50 |
| Frame | C | B | 2F | X |

| | | TOLERANCES UNLESS SPECIFIED | | REGAL REGAL-BELOIT CORPORATION | | DRAWN NK 04-15-2019 | |
|--|-------------|-----------------------------|------------|---------------------------------|-------------------|---------------------|------------------------------|
| | | DEC. | INCHES | | | CHK VY 04-15-2019 | |
| | | .X | ±.1 | | | APPD VY 04-15-2019 | |
| | | .XX | ±.03 | TITLE | | SCALE NONE | |
| | | .XXX | ±.005 | 404/405 TS FR - ODP - CAST IRON | | REF SS620752 | |
| A | NEW DRAWING | NK | 04-15-2019 | VY | .XXXX ±.0005 | MAT'L. | FMF WUXI |
| NO. | REVISION | BY & DATE | CHK | ANG | ±7'30" | FINISH | PREV |
| THIS DRAWING IN DESIGN AND DETAIL IS OUR PROPERTY AND MUST NOT BE USED EXCEPT IN CONNECTION WITH OUR WORK ALL RIGHTS OF DESIGN AND INVENTION ARE RESERVED THIS IS AN ELECTRONICALLY GENERATED DOCUMENT - DO NOT SCALE THIS PRINT | | | | RFP | CAD FILE SS620909 | SIZE | DRAWING NO. PAGE 1 OF 1 REV. |
| | | | | DIST | | B | SS620909 A |



VIEW OF TERMINAL END

| | | | | TOLERANCES UNLESS SPECIFIED | | REGAL REGAL-BELOIT CORPORATION | DRAWN RJW 02-11-2005 | | | |
|--|------------------------------|-------------|----------------|-----------------------------|--------------|--------------------------------|----------------------|-------------|------------|------|
| | | | | DEC. | INCHES | | CHK | ML | 02-11-2005 | |
| | | | | .X | ±.1 | | APPD | GK | 02-11-2005 | |
| | | | | .XX | ±.02 | TITLE CONNECTION DIAGRAM | | SCALE | | |
| D | CHANGED TO REGAL TITLE BLOCK | ECO-0108299 | WGJ 08/22/2016 | EMH | .XXX ±.005 | 12 LEAD- SINGLE VOLTAGE | | REF | | |
| 1 | ADDED IEC TERMINAL MARKINGS | CN 41429 | JJB 05/24/2007 | ML | .XXXX ±.0005 | MAT'L. | | FMF | | |
| NO. | REVISION | BY & DATE | CHK | ANG | ±7'30" | FINISH | | PREV | | |
| THIS DRAWING IN DESIGN AND DETAIL IS OUR PROPERTY AND MUST NOT BE USED EXCEPT IN CONNECTION WITH OUR WORK ALL RIGHTS OF DESIGN AND INVENTION ARE RESERVED THIS IS AN ELECTRONICALLY GENERATED DOCUMENT - DO NOT SCALE THIS PRINT | | | | RFP | 02-11-2005 | CAD FILE ee7300bh | SIZE | DRAWING NO. | PAGE OF | REV. |
| | | | | DIST | LB | | A | EE7300BH | | C |