

PRODUCT INFORMATION PACKET

marathon®
Motors

Model No: 405TSTD4029

Catalog No: U1432

Fire Pump Motor, 125 HP, 3 Ph, 50 Hz, 415 V, 1500 RPM, 405TS Frame, DP



Regal and Marathon are trademarks of Regal Rexnord Corporation or one of its affiliated companies.
©2024 Regal Rexnord Corporation, All Rights Reserved. MC017097E

RegalRexnord

Nameplate Specifications

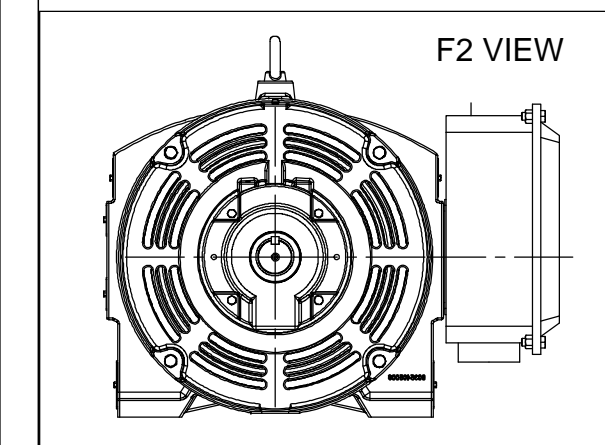
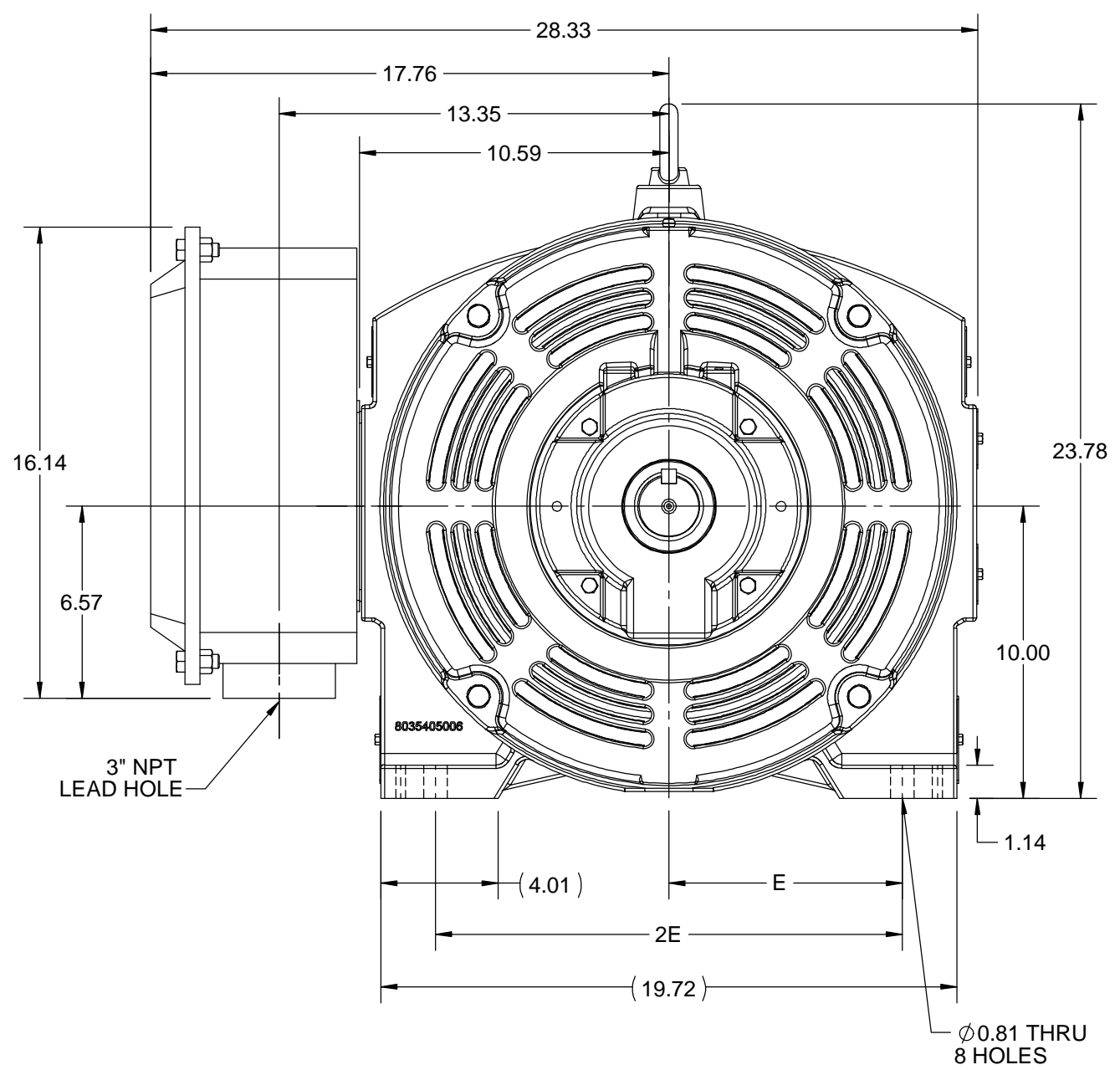
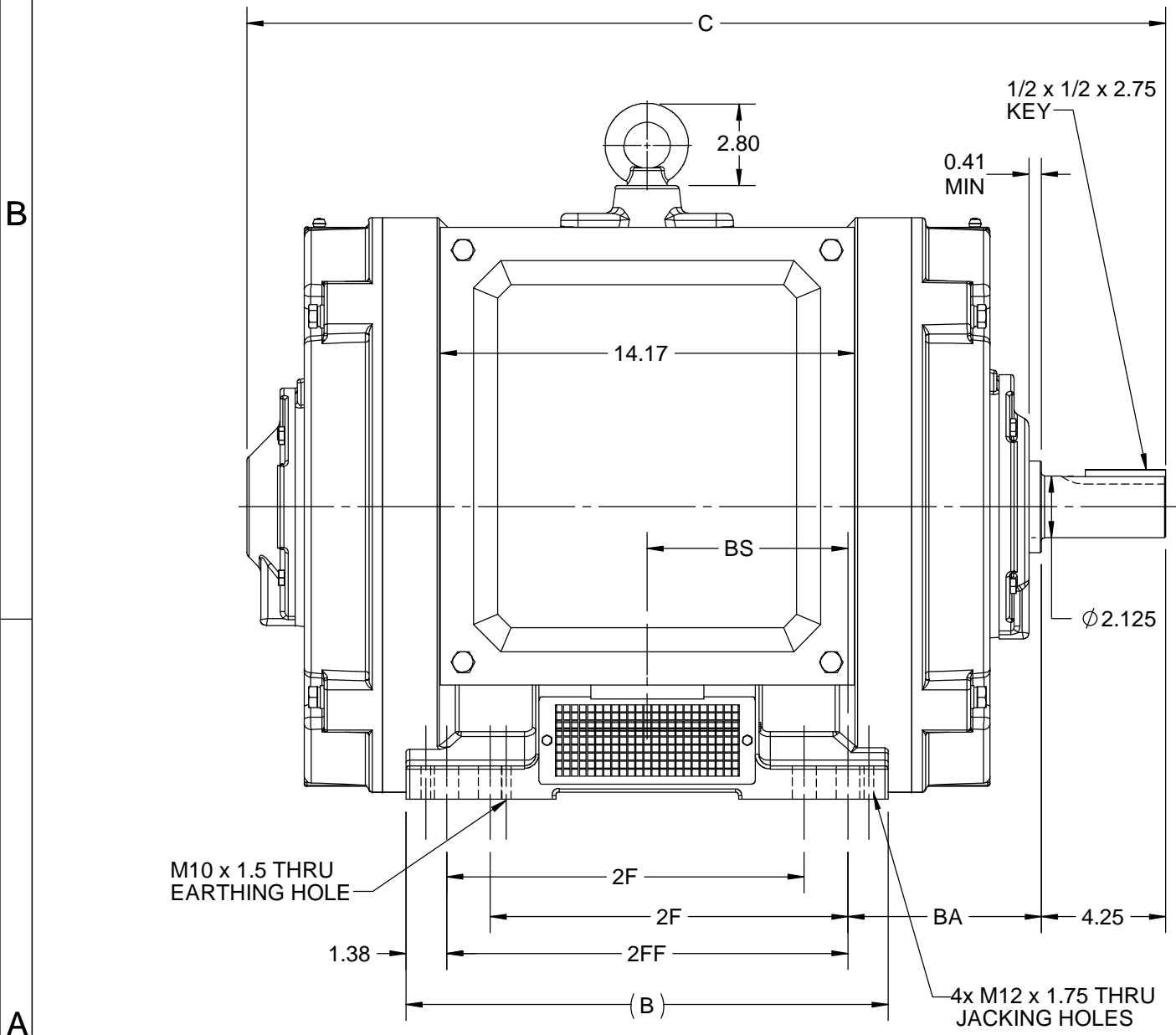
Phase	3	Output HP	125 Hp
Output KW	93.0 kW	Voltage	415 V
Speed	1483 rpm	Service Factor	1.15
Frame	405TS	Enclosure	Drip Proof
Thermal Protection	No Protection	Efficiency	93 %
Ambient Temperature	50 °C	Frequency	50 Hz
Current	157.0 A	Power Factor	88
Duty	Continuous	Insulation Class	F
Design Code	B	KVA Code	G
Drive End Bearing Size	6316	Opp Drive End Bearing Size	6314
UL	Listed	CSA	Y
CE	Y	IP Code	23
Number of Speeds	1		

Technical Specifications

Electrical Type	Squirrel Cage Induction Run	Starting Method	Part Wdg Start & Wye Start Delta Run
Poles	4	Rotation	Reversible
Resistance Main	.0651 Ohms	Mounting	Rigid Base
Motor Orientation	Horizontal	Drive End Bearing	Ball
Opp Drive End Bearing	Ball	Frame Material	Cast Iron
Shaft Type	TS	Shaft Diameter	2.125 in
Assembly/Box Mounting	F1/F2 CAPABLE		
Outline Drawing	SS620989	Connection Drawing	EE7300BH


This is an uncontrolled document once printed or downloaded and is subject to change without notice. Date Created:10/18/2024

4					3				2				1			
B	C	E	2E	2F	2FF	BA	BS	MOUNTING								
16.85	31.44	8.00	16.00	12.25	13.75	6.62	6.87	F1 OR F2								



DRAWING REVISION B	REVISION BY VS	REV DATE/© DATE 25-11-2020
ECO ECO-0195088	APPROVED BY GNK	DATE 25-11-2020
DRAWING UPDATED		
COPYRIGHT (PER REVISION DATE) REGAL BELOIT AMERICA, INC. ALL RIGHTS RESERVED. PROPRIETARY AND CONFIDENTIAL INFORMATION - THIS DOCUMENT IS THE PROPERTY OF REGAL BELOIT AMERICA, INC. ("OWNER") AND CONTAINS OWNER'S PROPRIETARY INFORMATION. ANY PERSON, CORPORATION OR OTHER FIRM RECEIVING IT IS DEEMED, BY RECEIVING IT, TO AGREE THAT IT, AND/OR ANY PART OF IT, SHALL NOT BE DISCLOSED TO ANY PERSON, CORPORATION OR OTHER ENTITY, DUPLICATED, AND/OR USED, EXCEPT AS EXPRESSLY APPROVED IN WRITING IN ADVANCE BY OWNER. THIS DOCUMENT SHALL BE RETURNED TO OWNER UPON REQUEST. IT MAY BE SUBJECT TO CERTAIN RESTRICTIONS UNDER APPLICABLE EXPORT CONTROL LAWS AND REGULATIONS.		

PRIMARY DIMENSIONS ARE INCH
mm DIMENSIONS IN [BRACKETS]
ARE FOR REFERENCE ONLY

DRAWN BY VS	 Regal Beloit America, Inc.	
DATE 11/01/2019		
APPROVED BY SBD	DESCRIPTION OUTLINE 404/405TS FR NEMA ODP	
DATE 11/01/2019		
REFERENCE	MATERIAL	PROCESS/FINISH
THIRD ANGLE PROJECTION	SIZE B	DRAWING NUMBER SS620989
		SHEET 1 OF 1



				TOLERANCES UNLESS SPECIFIED		 REGAL - BELOIT CORPORATION	DRAWN RJW 02-11-2005						
				DEC.	INCHES		CHK	ML	02-11-2005				
				.X	±.1		APPD	GK	02-11-2005				
				.XX	±.02		SCALE						
D	CHANGED TO REGAL TITLE BLOCK	ECO-0108299	WGJ 08/22/2016	EMH	.XXX	±.005	TITLE CONNECTION DIAGRAM 12 LEAD- SINGLE VOLTAGE				REF		
1	ADDED IEC TERMINAL MARKINGS	CN 41429	JJB 05/24/2007	ML	.XXXX	±.0005	MAT'L.				FMF		
NO.	REVISION		BY & DATE	CHK	ANG	±7'30"	FINISH				PREV		
THIS DRAWING IN DESIGN AND DETAIL IS OUR PROPERTY AND MUST NOT BE USED EXCEPT IN CONNECTION WITH OUR WORK ALL RIGHTS OF DESIGN AND INVENTION ARE RESERVED THIS IS AN ELECTRONICALLY GENERATED DOCUMENT - DO NOT SCALE THIS PRINT				RFP		02-11-2005	CAD FILE ee7300bh		SIZE	DRAWING NO.	PAGE	OF	REV.
				DIST		LB	A	EE7300BH		C			



P.O. BOX 8003
WAUSAU, WI 54401-8003
PH. 715-675-3311

DATA VOLTS: 415

CERTIFICATION DATA SHEET

CUSTOMER:**ORDER #:****CONN. DIAGRAM:****OUTLINE:****WINDING:****SPEED:**

EE7300BH

SS620989

HA22504106

NONE

1

CUSTOMER P.O. #:**REFERENCE MODEL #:** 405TSTD4029**CAT #:** U1432**CUSTOMER PART #:****MOUNTING:** F1/F2 CAPABLE

TYPICAL MOTOR PERFORMANCE DATA

HP	KW	SYNC RPM	FL RPM	FRAME	ENCLOSURE	TYPE	KVA CODE	DESIGN			
125	93	1500	1483	405TS	DP	TDC	G	B			
PH	HZ	VOLTS	AMPS	START TYPE	DUTY	INSL	S.F.	AMB	ELEV.		
3	50	415	157	PWS & YDRUN	CONT	F	1.15	50	3300		
F.L. EFF		93.0	3/4 LD EFF		94.7	1/2 LD EFF		94.9	GTD EFF	ELECT. TYPE	
F.L. PF		88.0	3/4 LD PF		85.8	1/2 LD PF		79.1	92.4	SQ CAGE IND RUN	
F.L. TORQUE		LR AMPS @ 460 V		L.R. TORQUE		B.D. TORQUE		F.L. RISE (°C)			
443	LB-FT	955		800 LB-FT		1,075 LB-FT		243%		75	
SOUND PRESSURE @ 3 FT.		SOUND	POWER	ROTOR WK ²	MAX. LOAD WK ²	SAFE STALL TIME	STARTS/HOUR	APPROX.	MOTOR WGT		
84	dBA	93	dBA	38.73 LB-FT ²	315 LB-FT ²	17 SEC.	2	1080	LB.		
*** SUPPLEMENTAL INFORMATION ***											
DE BRACKET TYPE		ODE BRACKET TYPE		MOUNT TYPE	MOTOR ORIENTATION	SEVERE DUTY	HAZARDOUS LOCATION	DRIP COVER	SCREENS	PAINT	
STANDARD		STANDARD		RIGID	HORIZONTAL	NO	NONE	YES	RODENT	RED (ENAMEL)	
BEARINGS		GREASE		SHAFT TYPE		SPECIAL DE		SPECIAL ODE		SHAFT MATERIAL	FRAME MATERIAL
DE	ODE										
BALL	BALL	POLYREX EM		TS		NONE		NONE		1045 HOT ROLLED (C-204)	CAST IRON
6316	6314										
THERMOSTATS		PROTECTORS		WDG RTD's		BRG RTD's		THERMISTORS		CONTROL	SPACE HEATERS
NONE		NOT		NONE		NONE		NONE		FALSE	NA
R1 (ohms/ph)		R2 (ohms/ph)		X1 (ohms/ph)		X2 (ohms/ph)		Xm (ohms/ph)		VIBRATION (in/sec)	FLOAT
0.041		0.018		0.119		0.217		5.042		0.150	ODE
* N O T E S *						INVERTER TORQUE: NONE					
						INV. HP SPEED RANGE: NONE					
						ENCODER: NONE					
						NONE					
						NONE PPR					
PREPARED BY: _____					BRAKE: NONE						
DATE: 11/17/2021					NONE					NONE	
					FT-LB: NA						
					VOLTAGE: NONE					HZ:	
FORM: 3531 REV. 4 2/27/06					UL: NO LETTER - ALL BRANDS-UL LISTED FIRE PUMP MOTORS						

