

PRODUCT INFORMATION PACKET



Model No: 405THFCD39027
Catalog No: 405THFCD39027
100,1800,TEFC,405T,3/60/460

Regal and Marathon are trademarks of Regal Rexnord Corporation or one of its affiliated companies.
©2023 Regal Rexnord Corporation, All Rights Reserved. MC017097E



Nameplate Specifications

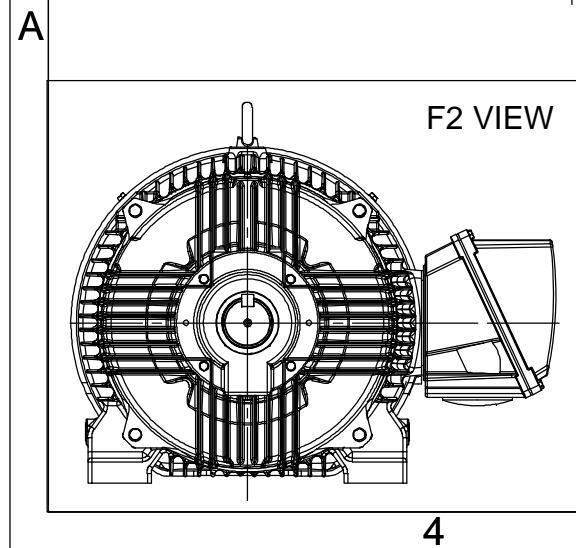
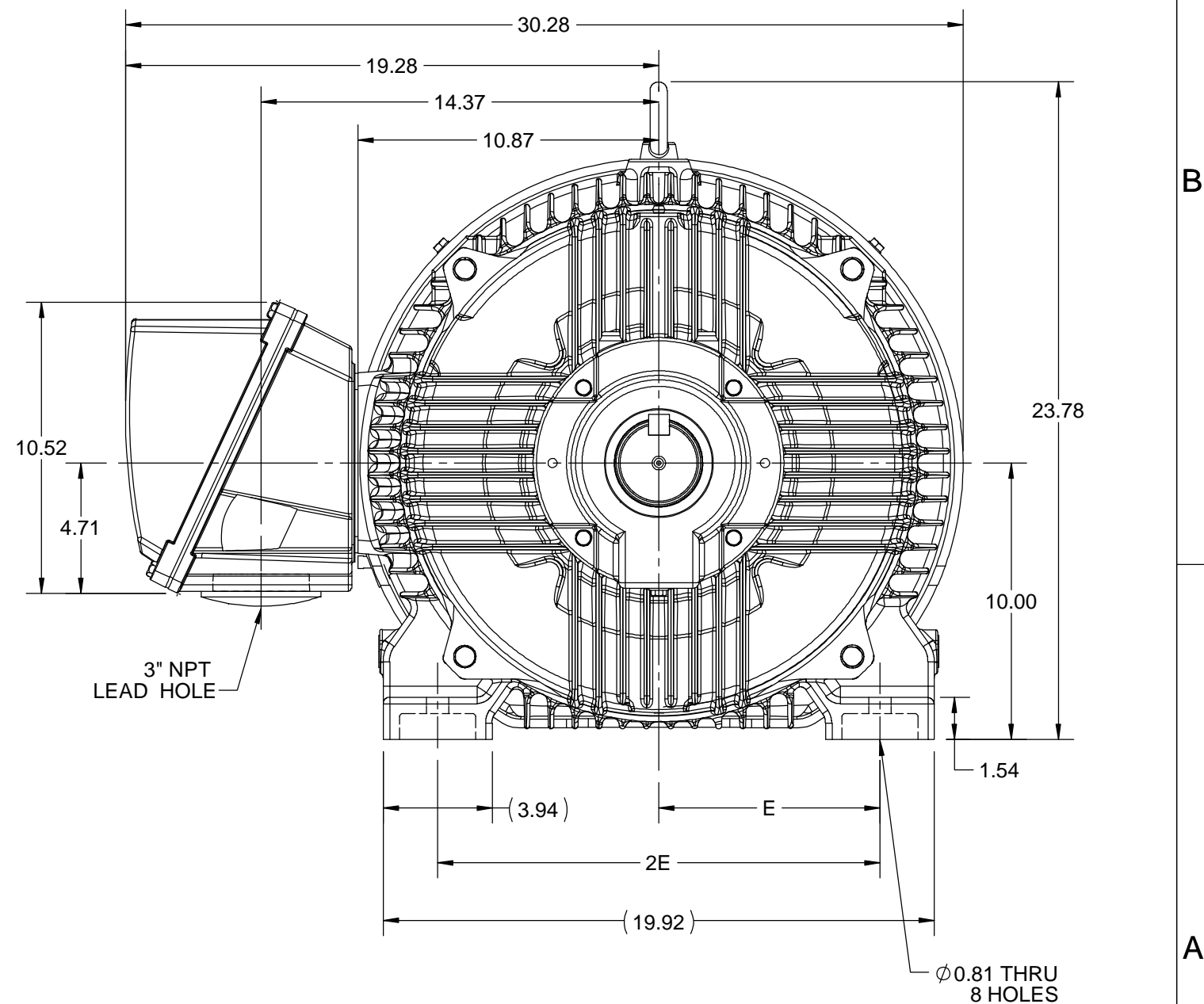
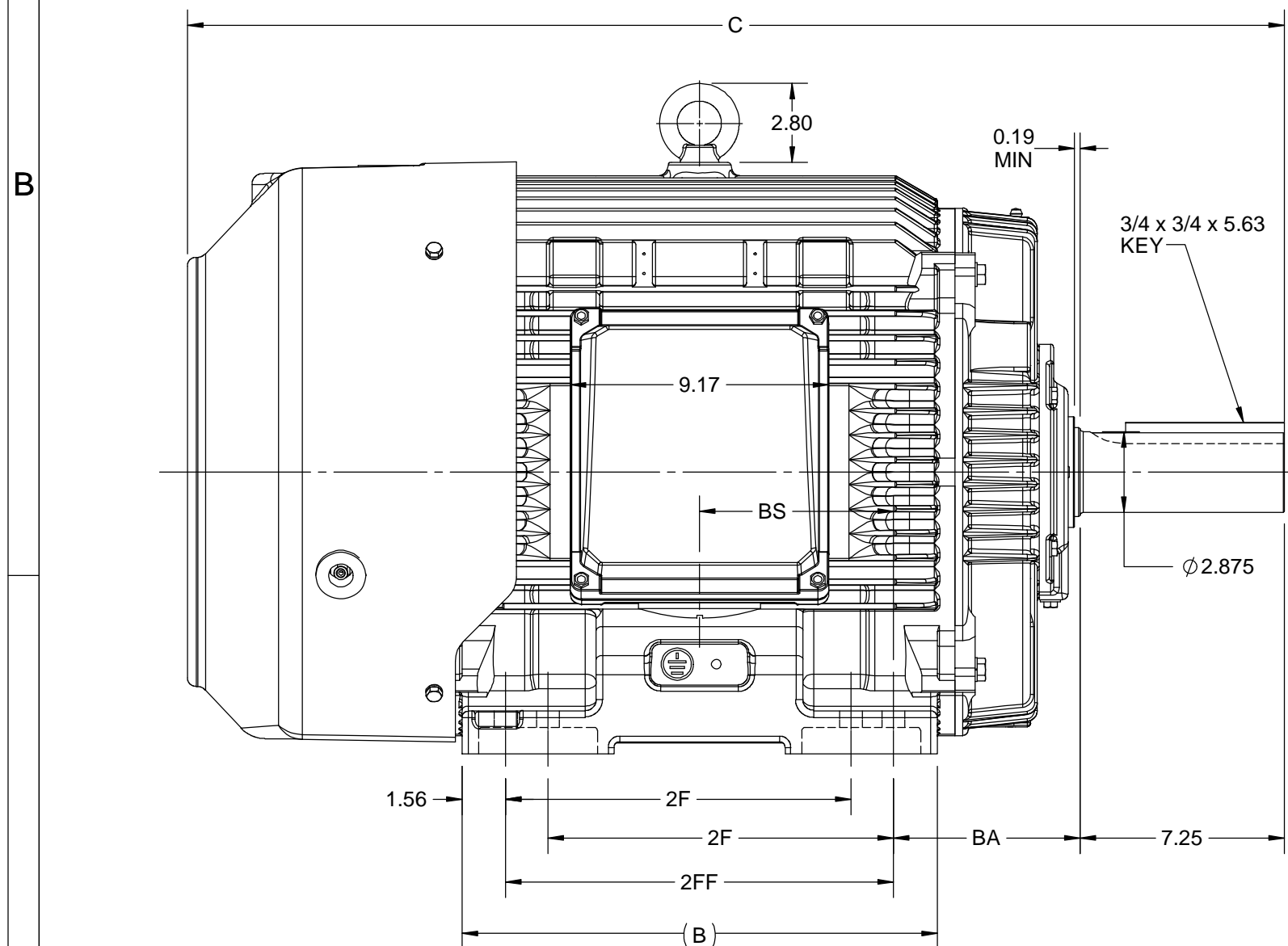
Phase	3	Output HP	100 Hp
Output KW	75.0 kW	Voltage	460 V
Speed	1785 rpm	Service Factor	1.15
Frame	405T	Enclosure	Totally Enclosed Fan Cooled
Thermal Protection	Thermostat	Efficiency	95.4 %
Ambient Temperature	40 °C	Frequency	60 Hz
Current	113.0 A	Power Factor	87
Duty	Continuous	Insulation Class	SPECIAL
Design Code	B	KVA Code	G
Drive End Bearing Size	6316	Opp Drive End Bearing Size	6314
UL	Listed	CSA	Y
CE	Y	IP Code	56
Number of Speeds	1		

Technical Specifications

Electrical Type	Squirrel Cage Inverter Rated	Starting Method	Line Or Inverter
Poles	4	Rotation	Selective Clockwise
Resistance Main	.0555 Ohms	Mounting	Rigid Base
Motor Orientation	Horizontal	Drive End Bearing	Ball
Opp Drive End Bearing	Ball	Frame Material	Cast Iron
Shaft Type	T	Shaft Diameter	2.875 in
Assembly/Box Mounting	F1/F2 CAPABLE	Inverter Load	CONSTANT 20:1
Outline Drawing	SS557665	Connection Drawing	EE7300S


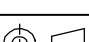
This is an uncontrolled document once printed or downloaded and is subject to change without notice. Date Created:04/24/2023

4					3			
B	C	E	2E	2F	2FF	BA	BS	MOUNTING
16.85	38.88	8.00	16.00	12.25	13.75	6.62	6.87	F1 OR F2



DRAWING REVISION C	REVISION BY VS	REV DATE/© DATE 25-11-2020
ECO ECO-0195088	APPROVED BY GNK	DATE 25-11-2020
ECO DESCRIPTION		
<p align="center">DRAWING UPDATED</p> <p>COPYRIGHT (PER REVISION DATE) REGAL BELOIT AMERICA, INC. ALL RIGHTS RESERVED. PROPRIETARY AND CONFIDENTIAL INFORMATION - THIS DOCUMENT IS THE PROPERTY OF REGAL BELOIT AMERICA, INC. ("OWNER") AND CONTAINS OWNER'S PROPRIETARY INFORMATION. ANY PERSON, CORPORATION OR OTHER FIRM RECEIVING IT IS DEEMED, BY RECEIVING IT, TO AGREE THAT IT, AND/OR ANY PART OF IT, SHALL NOT BE DISCLOSED TO ANY PERSON, CORPORATION OR OTHER ENTITY, DUPLICATED, AND/OR USED, EXCEPT AS EXPRESSLY APPROVED IN WRITING IN ADVANCE BY OWNER. THIS DOCUMENT SHALL BE RETURNED TO OWNER UPON REQUEST. IT MAY BE SUBJECT TO CERTAIN RESTRICTIONS UNDER APPLICABLE EXPORT CONTROL LAWS AND REGULATIONS.</p>		

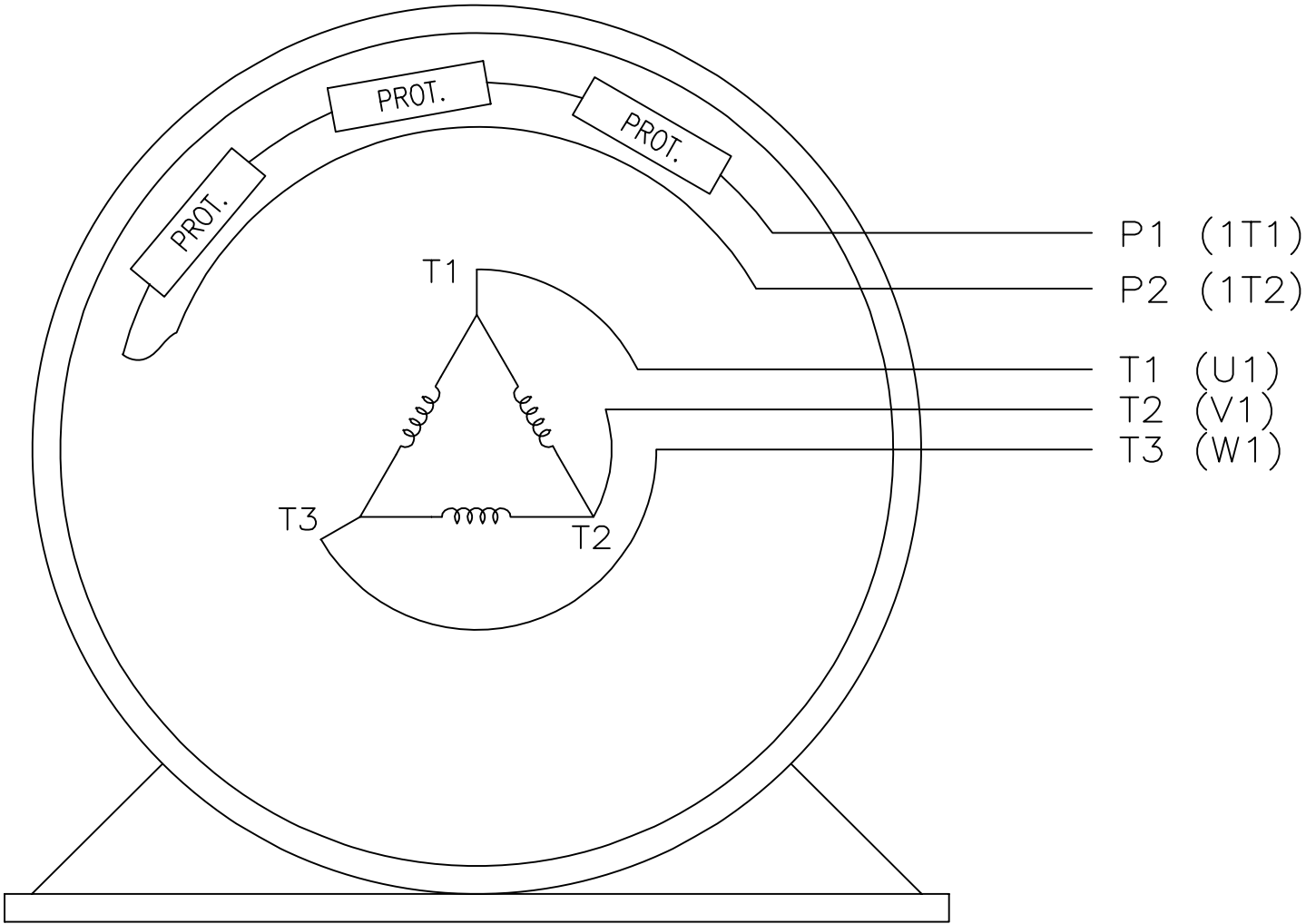
PRIMARY DIMENSIONS ARE INCH
mm DIMENSIONS IN [BRACKETS]
ARE FOR REFERENCE ONLY

DRAWN BY BISWA		 Regal Beloit America, Inc.	
DATE 12/24/2018		DESCRIPTION <div style="text-align: center;">OUTLINE</div> 404/405T FR-SD & IEEE841	
APPROVED BY SBD			
DATE 12/24/2018			
REFERENCE			
MATERIAL		PROCESS/FINISH	
THIRD ANGLE PROJECTION		SIZE B	DRAWING NUMBER SS557665
			SHEET 1 OF 1

EE7300S

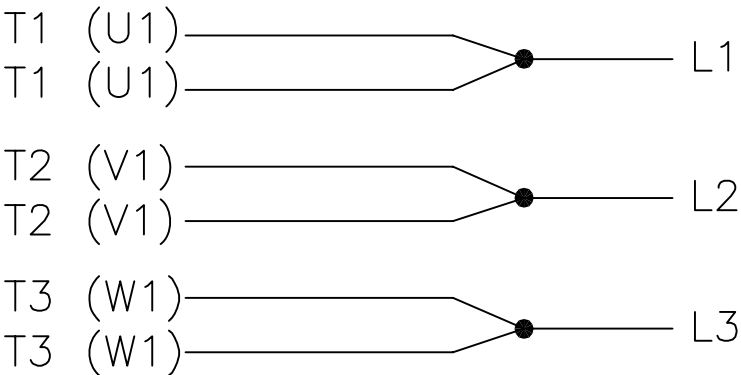
THREE PHASE – SINGLE VOLTAGE MOTOR

TO REVERSE ROTATION:
INTERCHANGE ANY TWO LINE
LEAD CONNECTIONS




P1 (1T1)
P2 (1T2)
T1 (U1)
T2 (V1)
T3 (W1)

IF MOTOR HAS MULTIPLE
T'S PER LEAD CONNECT
TOGETHER LIKE T'S



A-9806 DECAL

VIEW OF TERMINAL END

				TOLERANCES UNLESS SPECIFIED		 REGAL-BELOIT CORPORATION	DRAWN KL 12-15-1999			
				DEC.	INCHES		CHK DJK 12-15-1999			
F	UPDATED TITLE BLOCK	HV 02-27-2014	EWB	.X	± -		APPD DJK 12-15-1999			
3	REMOVED "N.C." FROM PROT.'S MU61770	JJB 08-02-2010		.XX	± -	TITLE CONNECTION DIAGRAM – EXTERNAL SINGLE VOLTAGE 3Ø MOTOR	SCALE 1=1			
2	ADDED IEC MARKINGS MU61770	KL 09-16-2004	EAB	.XXX	± -		REF			
1	NEW DRAWING	KL 12-16-1999		.XXXX	± -	MAT'L.	FMF			
NO.	REVISION	BY & DATE	CHK	ANG	± -	FINISH	PREV			
THIS DRAWING IN DESIGN AND DETAIL IS OUR PROPERTY AND MUST NOT BE USED EXCEPT IN CONNECTION WITH OUR WORK ALL RIGHTS OF DESIGN AND INVENTION ARE RESERVED THIS IS AN ELECTRONICALLY GENERATED DOCUMENT – DO NOT SCALE THIS PRINT			RFP		CAD FILE ee7300s		SIZE A	DRAWING NO. EE7300S	PAGE OF	REV. F
			DIST WA-LB-SB							