

PRODUCT INFORMATION PACKET

Model No: 404TTDS6086

Catalog No: U270

XRI® General Purpose General Purpose Motor, 60 HP, 3 Ph, 60 Hz, 230/460 V, 1200 RPM, 404T Frame, DP



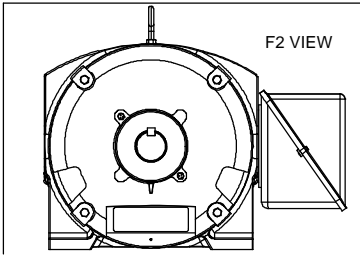
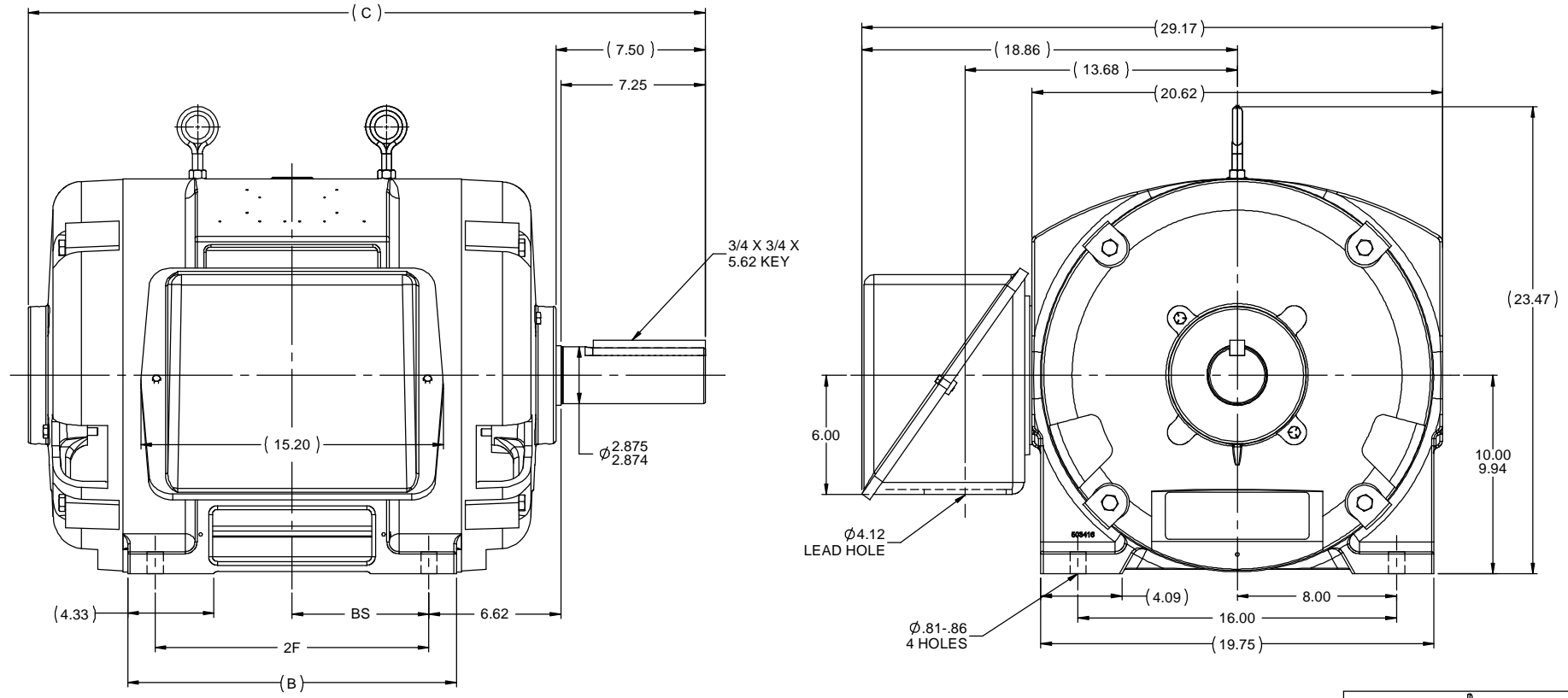
Regal and Marathon are trademarks of Regal Rexnord Corporation or one of its affiliated companies.
©2022 Regal Rexnord Corporation, All Rights Reserved. MC017097E

Nameplate Specifications

Output HP	60 Hp	Output KW	45.0 kW
Frequency	60 Hz	Voltage	230/460 V
Current	146.0/73.0 A	Speed	1185 rpm
Service Factor	1.15	Phase	3
Efficiency	95 %	Power Factor	81.5
Duty	Continuous	Insulation Class	F
Design Code	B	KVA Code	G
Frame	404T	Enclosure	Drip Proof
Thermal Protection	Thermostat	Ambient Temperature	40 °C
Drive End Bearing Size	6316	Opp Drive End Bearing Size	6313
UL	No	CSA	Y
CE	Y	IP Code	12
Number of Speeds	1		

Technical Specifications

Electrical Type	Squirrel Cage Induction Run	Starting Method	Across The Line
Poles	6	Rotation	Reversible
Resistance Main	.113 Ohms	Mounting	Rigid Base
Motor Orientation	Horizontal	Drive End Bearing	Ball
Opp Drive End Bearing	Ball	Frame Material	Cast Iron
Shaft Type	T	Overall Length	32.51 in
Frame Length	15.50 in	Shaft Diameter	2.875 in
Shaft Extension	7.5 in	Assembly/Box Mounting	F1/F2 CAPABLE
Outline Drawing	B-SS509599-1550	Connection Drawing	A-EE7308AD



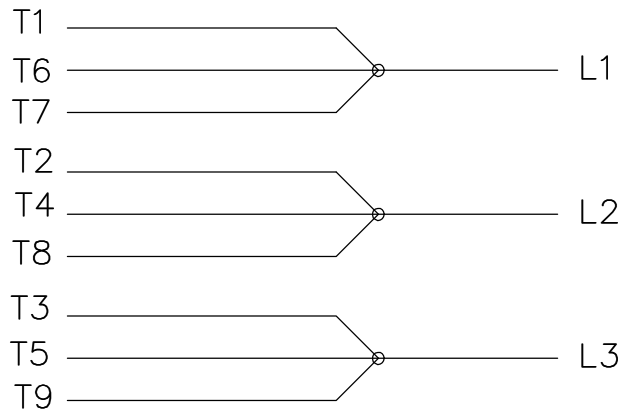
- NOTES:
 1. CONDUIT BOX CAN BE ROTATED IN 90 ° STEPS.
 2. CONDUIT BOX CAN BE MOUNTED ON OPPOSITE SIDE BY REMOVING BRACKETS AND TURNING FRAME 180 °
 3. NAMEPLATES TO BE READ FROM CONDUIT BOX SIDE OF MOTOR.

DASH	FRAME	B	C	BS	2F
1550	404T	15.00	32.51	6.12	12.25
1700	405T	16.50	34.01	6.88	13.75

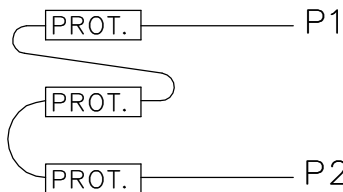
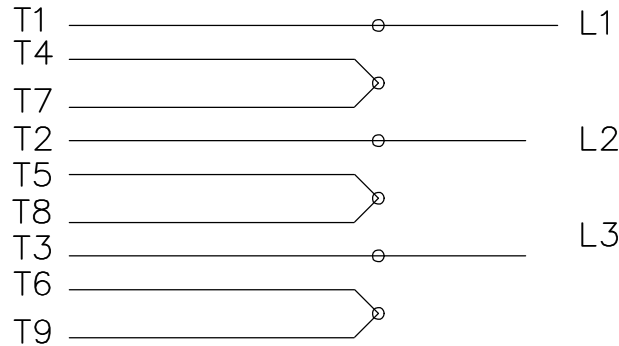
REVISION		BY & DATE		CHK		ANG		±7'30"		FINISH		DRAWN		CHK		APPR		SCALE		REF		FMF		PAGE		OF					
11	ADDED F2 VIEW	TJW	1/6/2010	CTO	DEC	INCHES				TITLE		OUTLINE		DRAWN		TJB		2/24/1988		CHK		JL		2/24/1988		APPR		ML		2/24/1988	
10	REDRAWN IN AUTOCAD	TAT	6/29/2004	ML	X	±.1				TITLE		400T FR. - DR.PR. - (STD0		SCALE		3:16		REF		FMF		PAGE		OF							
9	REPLACED ONE EYEBOLT WITH TWO CN28063	BJW	2/10/2000	XX		±.03				TITLE		400T FR. - DR.PR. - (STD0		SCALE		3:16		REF		FMF		PAGE		OF							
8	UPDATED C'BOX GEOMETRY CN28063	TRB	2/10/2000	XXX		±.005				TITLE		400T FR. - DR.PR. - (STD0		SCALE		3:16		REF		FMF		PAGE		OF							
7	REDRAWN ON CADD	TLB	2/24/1988	XXXX		±.0005				TITLE		400T FR. - DR.PR. - (STD0		SCALE		3:16		REF		FMF		PAGE		OF							
NO										FINISH		PREV		SIZE		DRAWING NO		REV		PAGE		OF									
										NETWORK FILE NAME		SS509599		SIZE		B		DRAWING NO		SS509599		PAGE		11							



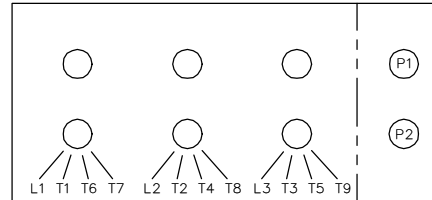
LOW VOLTAGE



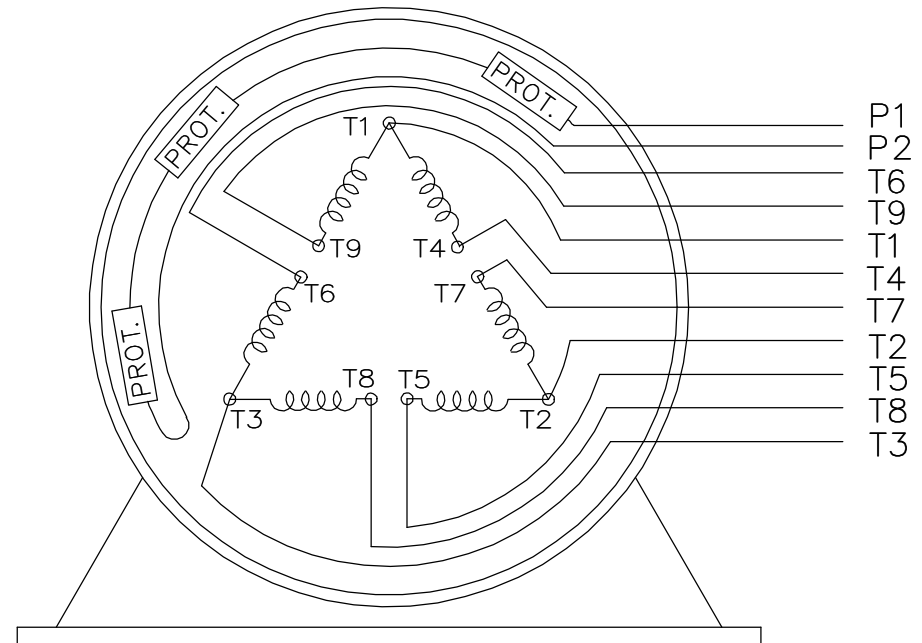
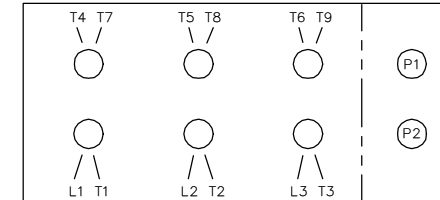
HIGH VOLTAGE



LOW VOLTAGE



HIGH VOLTAGE



VIEW OF TERMINAL END

WHEN MORE THAN ONE PROT. IS USED; PROT. ARE CONNECTED IN SERIES

DRAWING REVISION L	REVISION BY JP	REV DATE/© DATE 06-21-2019	TOLERANCES (EXCEPT AS NOTED): DEC. INCH mm ANGLE .X ±0.1 [±3] ±7' 30" .XX ±0.02 [±0.5] .XXX ±0.005 [±0.13] .XXXX ±0.0005 [±0.013]	DRAWN BY MJD	Regal Beloit America, Inc.
ECO ECO-0168744	APPROVED BY MH	DATE 06-21-2019		DATE 12-19-1997	
ECO DESCRIPTION UPDATED TO CURRENT STANDARDS			REMOVE BURRS & BREAK SHARP EDGES: .003/.015 [.08/.38] X 45° CORNER FILLETS: R.02 [.5] MACHINED SURFACES: 200/ 5.1 INCH/mm	APPROVED BY GK	DESCRIPTION CONN DIAGRAM-EXTERNAL
COPYRIGHT (PER REVISION DATE) REGAL BELOIT AMERICA, INC. ALL RIGHTS RESERVED. PROPRIETARY AND CONFIDENTIAL INFORMATION - THIS DOCUMENT IS THE PROPERTY OF REGAL BELOIT AMERICA, INC. ("OWNER") AND CONTAINS OWNER'S PROPRIETARY INFORMATION. ANY PERSON, CORPORATION OR OTHER FIRM RECEIVING IT IS DEEMED, BY RECEIVING IT, TO AGREE THAT IT, AND/OR ANY PART OF IT, SHALL NOT BE DISCLOSED TO ANY PERSON, CORPORATION OR OTHER ENTITY, DUPLICATED, AND/OR USED, EXCEPT AS EXPRESSLY APPROVED IN WRITING IN ADVANCE BY OWNER. THIS DOCUMENT SHALL BE RETURNED TO OWNER UPON REQUEST. IT MAY BE SUBJECT TO CERTAIN RESTRICTIONS UNDER APPLICABLE EXPORT CONTROL LAWS AND REGULATIONS.			THIRD ANGLE PROJECTION	MATERIAL	PROCESS/FINISH
			SIZE A	DRAWING NUMBER EE7308AD	SHEET 1 OF 1

CERTIFICATION DATA SHEET

Model#: 404TTDS6086 BP **WINDING#:** T404650 NONE 1
CONN. DIAGRAM: A-EE7308AD **ASSEMBLY:** F1/F2 CAPABLE
OUTLINE: B-SS509599-1550

TYPICAL MOTOR PERFORMANCE DATA

HP	KW	SYNC. RPM	F.L. RPM	FRAME	ENCLOSURE	KVA CODE	DESIGN			
60	45	1200	1185	404T	DP	G	B			
PH	Hz	VOLTS	FL AMPS	START TYPE	DUTY	INSL	S.F	AMB°C	ELEVATION	
3	60	230/460	146/73	ACROSS THE LINE	CONTINUOUS	B1	1.15	40	3300	
FULL LOAD EFF: 95		3/4 LOAD EFF: 95.4		1/2 LOAD EFF: 95		GTD. EFF		ELEC. TYPE		NO LOAD AMPS
FULL LOAD PF: 81.5		3/4 LOAD PF: 77.5		1/2 LOAD PF: 68		94.5		SQ CAGE IND RUN		56 / 28
F.L. TORQUE		LOCKED ROTOR AMPS		L.R. TORQUE		B.D. TORQUE		F.L. RISE°C		
266 LB-FT		870 / 435		500 LB-FT 188		625 LB-FT 235		25		
SOUND PRESSURE @ 3 FT.	SOUND POWER	ROTOR WK^2	MAX. WK^2	SAFE STALL TIME	STARTS / HOUR	APPROX. MOTOR WGT				
73 dBA	83 dBA	33 LB-FT^2	850 LB-FT^2	20 SEC.	2	1000 LBS.				

*** SUPPLEMENTAL INFORMATION ***

DE BRACKET TYPE	ODE BRACKET TYPE	MOUNT TYPE	ORIENTATION	SEVERE DUTY	HAZARDOUS LOCATION	DRIP COVER	SCREENS	PAINT
STANDARD	STANDARD	RIGID	HORIZONTAL	FALSE	NONE	FALSE	NONE	GRAY (ENAMEL)

BEARINGS		GREASE	SHAFT TYPE	SPECIAL DE	SPECIAL ODE	SHAFT MATERIAL	FRAME MATERIAL
DE	OPE						
BALL	BALL						
6316	6313	POLYREX EM	T	NONE	NONE	1045 HOT ROLLED (C-204)	CAST IRON

THERMO-PROTECTORS				THERMISTORS	CONTROL	SPACE /n HEATERS
THERMOSTATS	PROTECTORS	WDG RTDs	BRG RTDs	NONE	FALSE	NONE VOLTS
TSTATS (N/C)	NOT	NONE	NONE	NONE	FALSE	NONE VOLTS

If Inverter equals NONE, contact factory for further information

* N O T E S *	INVERTER TORQUE: NONE
	INV. HP SPEED RANGE: NONE
	ENCODER: NONE NONE NONE NONE NONE PPR
	BRAKE: NONE NONE NONE P/N NONE NONE NONE - FT-LB NONE V NONE Hz

DATE: 06/21/2017 08:01:06 AM
 FORM 3531 REV.3 02/07/99
 ** Subject to change without notice.

Data Sheet

Date: 6/19/2017

404TTDS6086

Customer: _____

Attention: _____

Submitted by: FAREEDA DUDEKULA



Submittal

Data @ 460 V

Motor Load Data

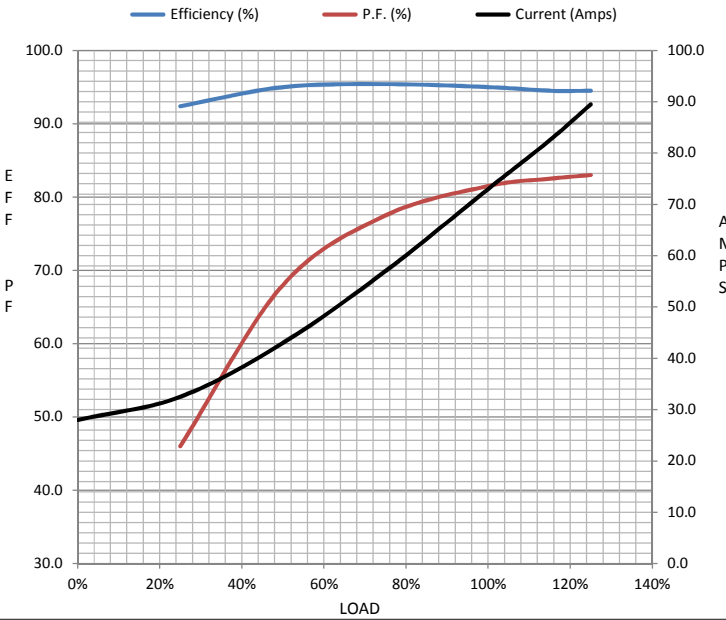
Load	0%	25%	50%	75%	100%	115%	125%	LR
Current (Amps)	28.0	32.5	43.0	57.0	73.0	82.5	89.5	435
Torque (ft-lb)	0.00	66.0	132	199	266	306	333	500
RPM	1200	1196	1194	1190	1185	1,184	1182	0
Efficiency (%)		92.4	95.0	95.4	95.0	94.5	94.5	
P.F. (%)	4.5	46.0	68.0	77.5	81.5	82.5	83.0	37.0

Motor Speed Data

	LR	Pull-Up	BD	Rated	Idle
Speed (RPM)	0	500	1095	1185	1200
Current (Amps)	435	400	275	73.0	28.0
Torque (ft-lb)	500	475	625	266	0.00

Information Block

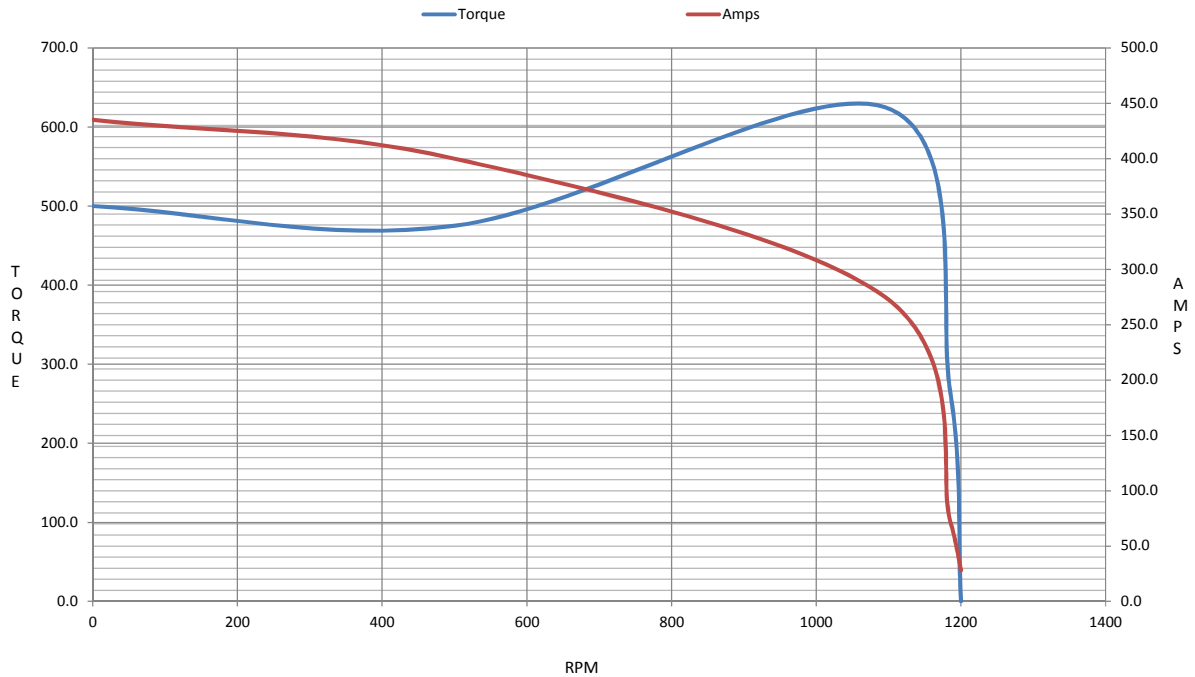
HP	60.0
Sync. RPM	1200
Frame	404
Enclosure	DP
Construction	TDS
Voltage	230/460 V
Frequency	60 Hz
Design	B
LR Code letter	G
Service Factor	1.15
Temp Rise @ FL	25 °C
Duty	CONT
Ambient	40 °C
Elevation	1,000 feet
Rotor/Shaft wk ²	33.0 Lb-Ft ²
Ref Wdg	T404650 NONE
Sound Pressure @ 1M	73 dBA
VFD Rating	NONE
Outline Dwg	B-SS509599-1550
Conn. Diag	A-EE7308AD



Additional Specifications:

EQUIV CKT (OHMS / PHASE)				
R1	R2	X1	X2	Xm
0.0000	0.0000	0.0000	0.0000	0.0000

Speed -Torque Curve



EC Declaration of Conformity

The undersigned representing
the manufacturer:

Regal Beloit America
100 East Randolph St.
Wausau, WI 54401

and the authorized representative
established within the Community:

Marathon Electric UK
6F Thistleton Road Ind. Estate
Market Overton
Oakham, Rutland LE15 7PP UK

are committed to providing customers with products that comply with applicable regulations and international protocols to which they are subject, including the requirements of the European Parliament Directive on the Harmonization of the laws relating to electrical equipment designed for use within certain voltage limits (2014/35/EU).

Regal Beloit America declares that the following product(s), to which this declaration relates, are in conformity with the relevant sections of the EC standards listed below.

This statement supersedes any statements previously issued pertaining to the product(s) listed below and is subject to change without notice.

Model No : 404TTDS6086

(Model No. may contain prefix and/or suffix characters)

Catalog No : U270

Rework No : N/A

Directives :

Low Voltage Directive 2014/35/EU

Harmonized Standards Used :

EN 60034-1: 2010 (IEC 60034-1: 2010)

EN 60034-5: 2001/A1:2007 (IEC 60034-5: 2000/A1:2006)

Authorized Representative:



Michael A. Logsdon
Vice President, Technology

Authorized Representative in the Community:



Julian Clark
Marketing Engineer

Created on 09/01/2022

CE 22