

# PRODUCT INFORMATION PACKET



Model No: 404TTDS4359

Catalog No: M846A

100 HP Vertical Pump Motor, 3 phase, 1800 RPM, 230/460 V, 404HPV Frame, ODP  
Vertical Pump Motors

Regal and Marathon are trademarks of Regal Rexnord Corporation or one of its affiliated companies.  
©2021 Regal Rexnord Corporation, All Rights Reserved. MC017097E

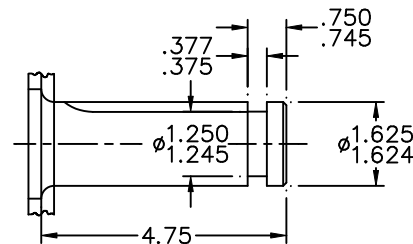
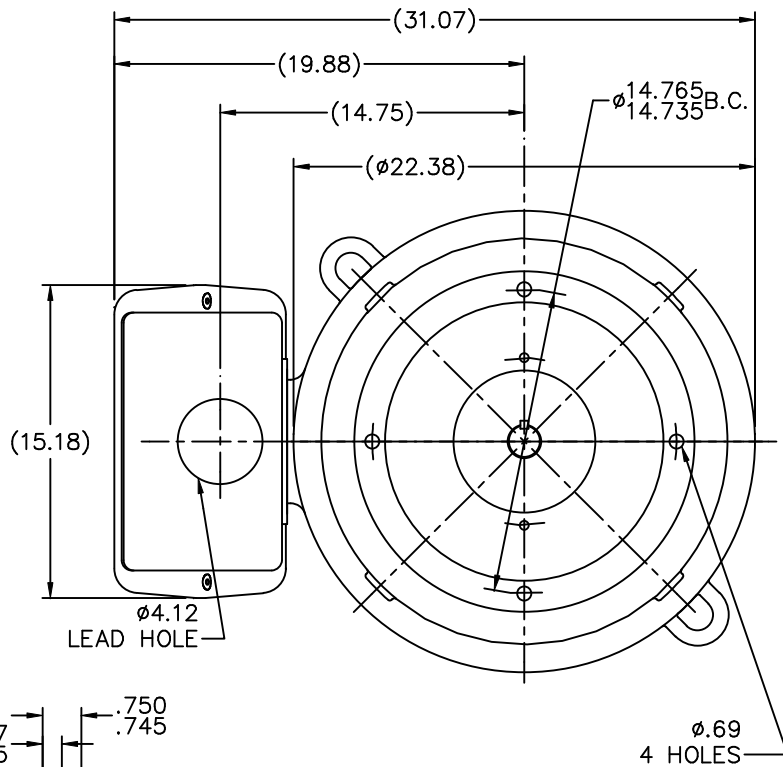


## Nameplate Specifications

Output HP	100 Hp	Output KW	75.0 kW
Frequency	60 Hz	Voltage	230/460 V
Current	236.0/118.0 A	Speed	1780 rpm
Service Factor	1.15	Phase	3
Efficiency	94.1 %	Power Factor	84.5
Duty	Continuous	Insulation Class	F
Design Code	B	KVA Code	G
Frame	404HPV	Enclosure	Drip Proof
Thermal Protection	No	Ambient Temperature	40 °C
Drive End Bearing Size	6314	Opp Drive End Bearing Size	6314
UL	Recognized	CSA	Y
CE	Y	IP Code	12
Number of Speeds	1		

## Technical Specifications

Electrical Type	Squirrel Cage Induction Run	Starting Method	Across The Line
Poles	4	Rotation	Reversible
Resistance Main	.052 Ohms	Mounting	Round
Motor Orientation	Shaft Down	Drive End Bearing	Ball
Opp Drive End Bearing	Ball	Frame Material	Cast Iron
Shaft Type	HP	Overall Length	31.75 in
Frame Length	17.00 in	Shaft Diameter	1.625 in
Shaft Extension	4.5 in	Assembly/Box Mounting	F1/F2 CAPABLE
Outline Drawing	B-SS504367-1700	Connection Drawing	A-EE7308K



DETAIL OF SHAFT EXT.

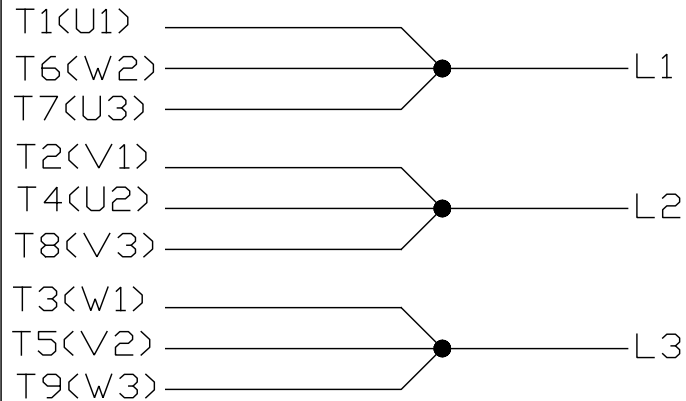
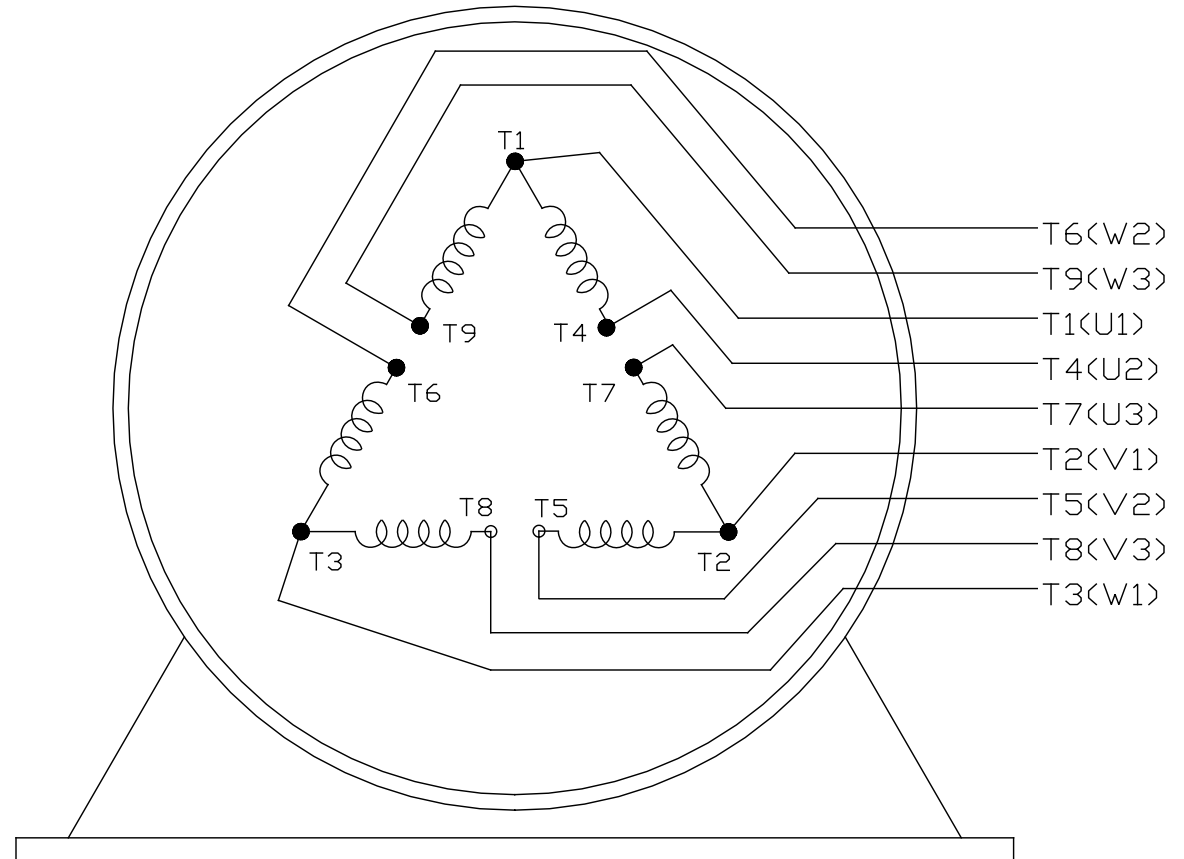
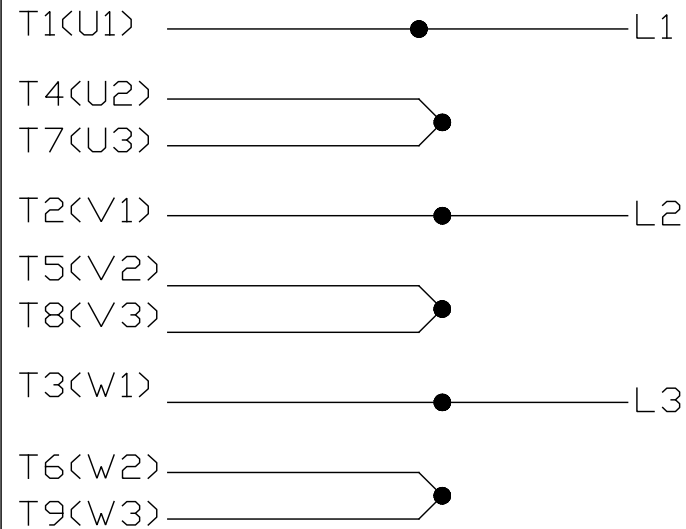
NOTE:  
1. CONDUIT BOX CAN BE ROTATED  
IN 90° STEPS.

DASH	FRAME	C	AG	BV		10	UPDATED C'BOX GEOMETRY		CN28063	NJS	02-15-2000	.XXX	±.005	400 FR. - DR. P.R.		REF					
						9	REDRAWN ON CADD - NO CHANGE		4086472	KL	10-28-1993	.XXXX	±.0005	MAT'L		FMF					
						NO.	REVISION				BY & DATE	CHK	ANG	±7'30"	FINISH	PREV					
							THIS DRAWING IN DESIGN AND DETAIL IS OUR PROPERTY AND MUST NOT BE USED EXCEPT IN CONNECTION WITH OUR WORK ALL RIGHTS OF DESIGN AND INVENTION ARE RESERVED THIS IS AN ELECTRONICALLY GENERATED DOCUMENT - DO NOT SCALE THIS PRINT					RFP	CAD FILE			ss504367	SIZE	DRAWING NO.	PAGE	OF	REV.
												DIST	WA	B	SS504367			12			
1700	400FR	31.75	27.25	13.75																	


```
ERROR: undefined
OFFENDING COMMAND: Psc

STACK:
```

EE7308K

LOW VOLTAGEHIGH VOLTAGE

VIEW OF TERMINAL END

			TOLERANCES UNLESS SPECIFIED			 <b>REGAL - BELOIT CORPORATION</b>	DRAWN PGK 06-04-1997		
NO.	REVISION	BY & DATE	CHK	ANG	± 7'30"		CHK	ML	06-05-1997
E	CORRECTED IEC MARKINGS ECD-0111208	WGJ 01-23-2017	EMH	DEC.	INCHES	<b>TITLE</b> CONNECTION DIAGRAM DELTA CON. - 3Ø - 9 LEADS	APPD	GK	06-15-1997
D	RE-DRAWN WITH REGAL LOGO ECD-0110493	WGJ 09-30-2016	EMH	.X	± .1				
8	ADDED IEC DESIGNATIONS MU95020	TJW 4/30/2010	MJS	.XX	± .02				
7	REVISED HIGH VOLTAGE L2 WAS L3 CN52600-354	MRB 09-21-1998		.XXX	± .005				
6	REDRAWN ON CADD	PGK 06-05-1997		.XXXX	± .0005				
						<b>MAT'L.</b>			
						<b>FINISH</b>			
THIS DRAWING IN DESIGN AND DETAIL IS OUR PROPERTY AND MUST NOT BE USED EXCEPT IN CONNECTION WITH OUR WORK ALL RIGHTS OF DESIGN AND INVENTION ARE RESERVED THIS IS AN ELECTRONICALLY GENERATED DOCUMENT - DO NOT SCALE THIS PRINT						CAD FILE EE7308K	SIZE	DRAWING NO.	PAGE OF
							A	EE7308K	REV.
									E