

PRODUCT INFORMATION PACKET

marathon®
Motors

Model No: 404TTDS16332

Catalog No: M746

100 HP Vertical Solid Shaft P-Base Motor, 3 phase, 1800 RPM, 230/460 V, 404HPV Frame, ODP
Vertical Pump Motors



Regal and Marathon are trademarks of Regal Rexnord Corporation or one of its affiliated companies.
©2021 Regal Rexnord Corporation, All Rights Reserved. MC017097E

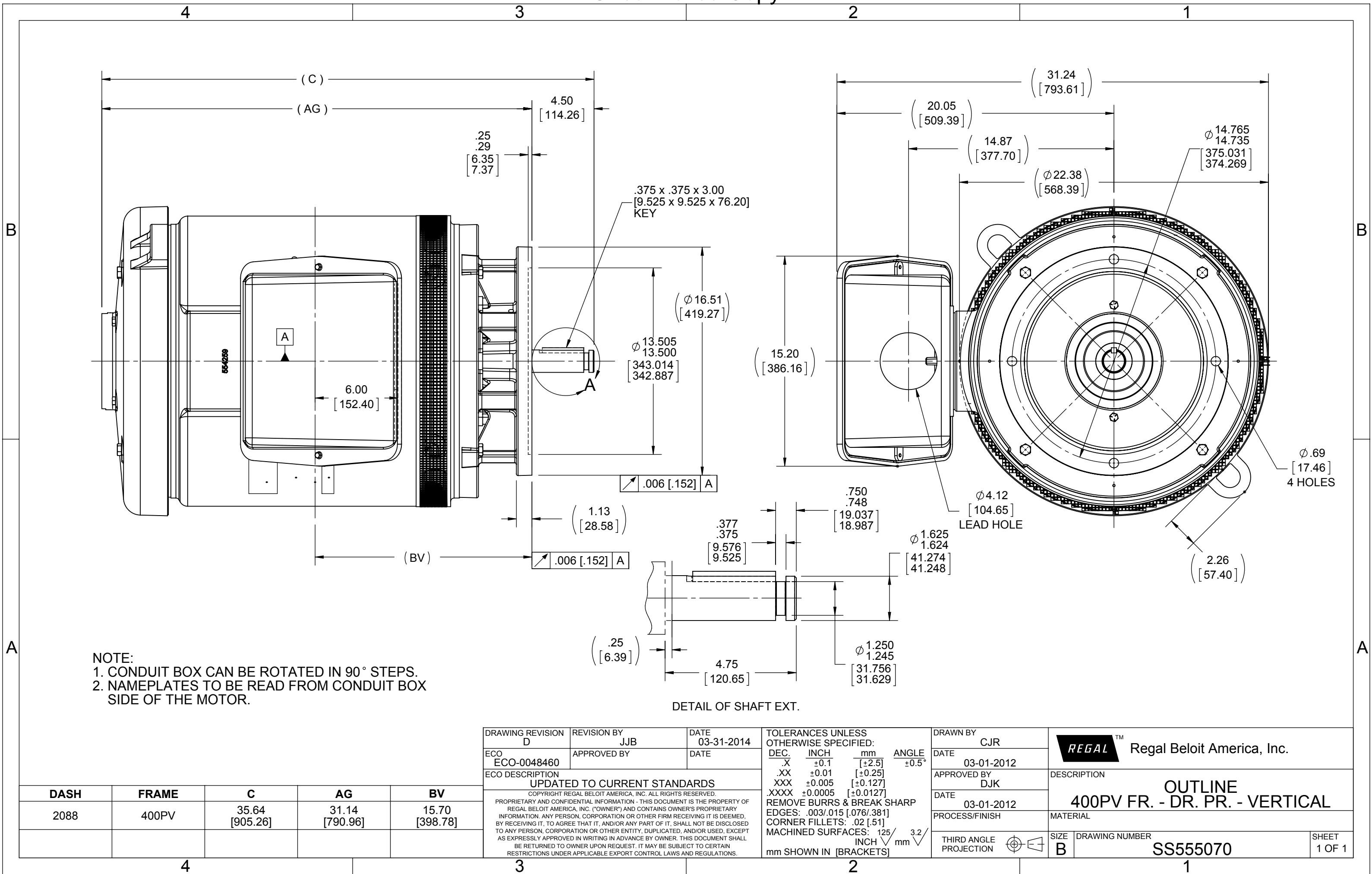
RegalRexnord

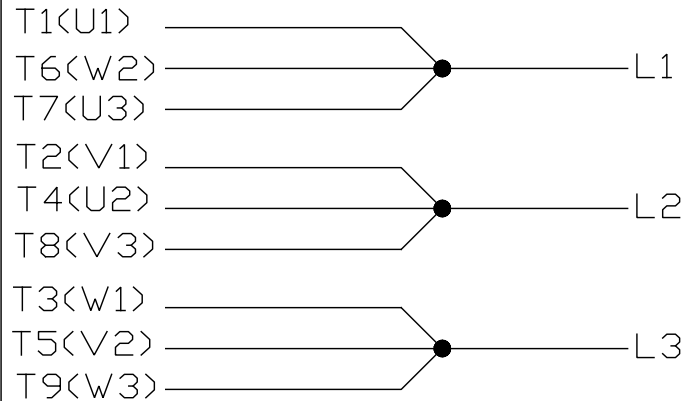
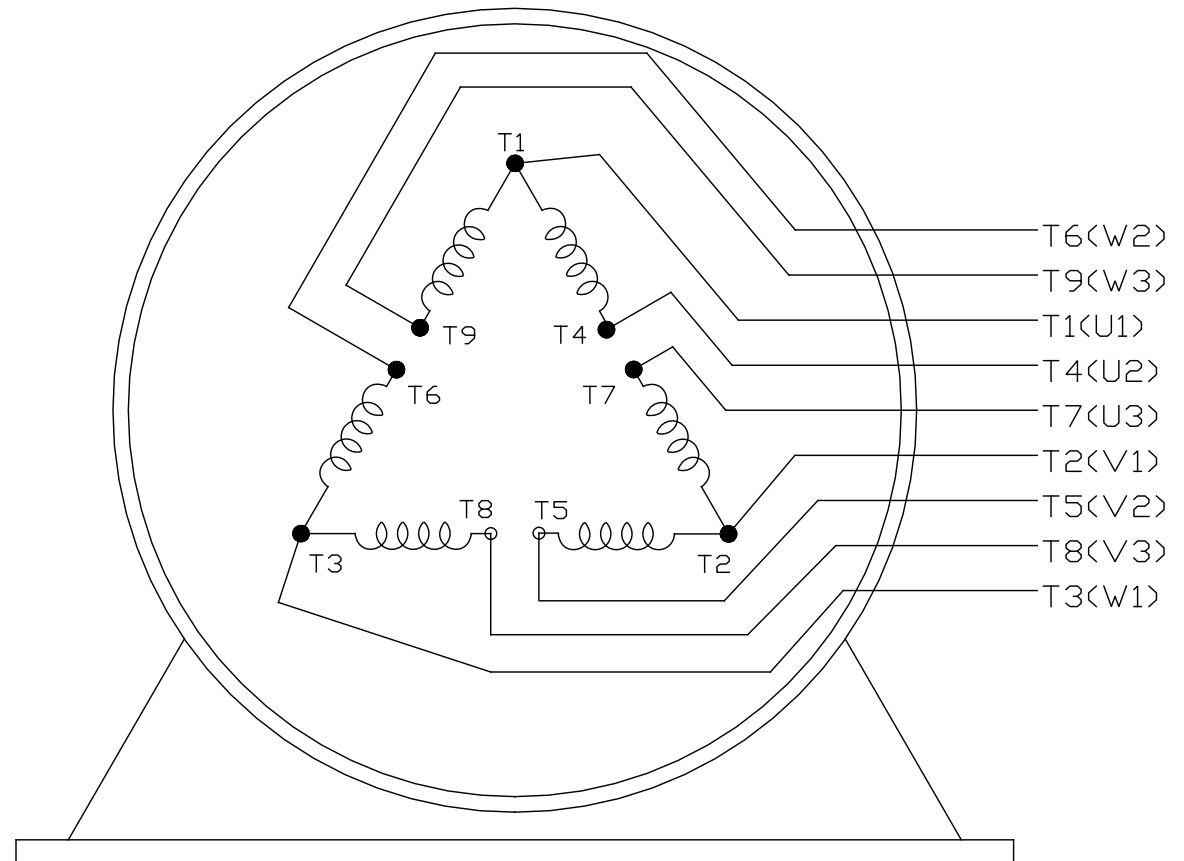
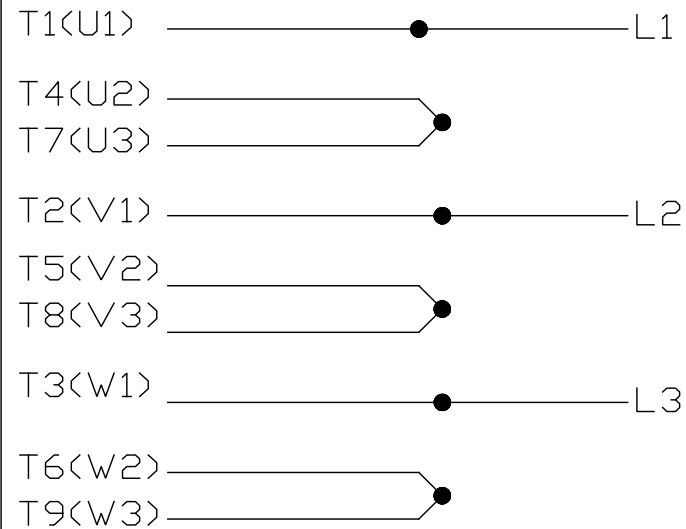
Nameplate Specifications

Output HP	100 Hp	Output KW	75.0 kW
Frequency	60 Hz	Voltage	230/460 V
Current	226.0/113.0 A	Speed	1785 rpm
Service Factor	1.15	Phase	3
Efficiency	95.4 %	Power Factor	86
Duty	Continuous	Insulation Class	F
Design Code	B	KVA Code	G
Frame	404HPV	Enclosure	Drip Proof
Thermal Protection	No	Ambient Temperature	40 °C
Drive End Bearing Size	6314	Opp Drive End Bearing Size	7314
UL	Recognized	CSA	Y
CE	Y	IP Code	22
Number of Speeds	1		


Technical Specifications

Electrical Type	Squirrel Cage Induction Run	Starting Method	Across The Line
Poles	4	Rotation	Reversible
Resistance Main	.0545 Ohms	Mounting	Round
Motor Orientation	Shaft Down	Drive End Bearing	Ball
Opp Drive End Bearing	Ball	Frame Material	Cast Iron
Shaft Type	HP	Overall Length	35.64 in
Frame Length	20.88 in	Shaft Diameter	1.625 in
Shaft Extension	4.50 in	Assembly/Box Mounting	F1/F2 CAPABLE
Outline Drawing	B-SS555070-2088	Connection Drawing	A-EE7308K



LOW VOLTAGEHIGH VOLTAGE

VIEW OF TERMINAL END

				TOLERANCES UNLESS SPECIFIED		 REGAL - BELOIT CORPORATION	DRAWN PGK 06-04-1997			
E	CORRECTED IEC MARKINGS ECD-0111208	WGJ 01-23-2017	EMH	DEC.	INCHES		CHK	ML 06-05-1997		
D	RE-DRAWN WITH REGAL LOGO ECD-0110493	WGJ 09-30-2016	EMH	.X	±.1		APPD	GK 06-15-1997		
8	ADDED IEC DESIGNATIONS MU95020	TJW 4/30/2010	MJS	.XX	±.02		TITLE CONNECTION DIAGRAM DELTA CON. - 3Ø - 9 LEADS	SCALE		
7	REVISED HIGH VOLTAGE L2 WAS L3 CN52600-354	MRB 09-21-1998		.XXX	±.005			REF		
6	REDRAWN ON CADD	PGK 06-05-1997		.XXXX	±.0005	MAT'L.	FMF			
NO.	REVISION	BY & DATE	CHK	ANG	± 7'30"	FINISH	PREV			
THIS DRAWING IN DESIGN AND DETAIL IS OUR PROPERTY AND MUST NOT BE USED EXCEPT IN CONNECTION WITH OUR WORK ALL RIGHTS OF DESIGN AND INVENTION ARE RESERVED THIS IS AN ELECTRONICALLY GENERATED DOCUMENT - DO NOT SCALE THIS PRINT			RFP		CAD FILE EE7308K		SIZE A	DRAWING NO. EE7308K	PAGE OF	REV. E
			DIST							



P.O. BOX 8003
WAUSAU, WI 54401-8003
PH. 715-675-3311

DATA VOLTS: 460

CERTIFICATION DATA SHEET

CUSTOMER: _____ CUSTOMER P.O. #: _____
ORDER #: _____ REFERENCE MODEL #: 404TTDS16332
CONN. DIAGRAM: A-EE7308K CAT #: M746
OUTLINE: B-SS555070-2088 CUSTOMER PART #: _____
WINDING: T404450 NONE 1 MOUNTING: F1/F2 CAPABLE
SPEED: _____

TYPICAL MOTOR PERFORMANCE DATA

HP	KW	SYNC RPM	FL RPM	FRAME	ENCLOSURE	TYPE	KVA CODE	DESIGN
100	75	1800	1785	404HPV	DP	TDS	G	B

PH	HZ	VOLTS	AMPS	START TYPE	DUTY	INSL	S.F.	AMB	ELEV.
3	60	230/460	226/113	ACROSS THE LINE	CONT	F	1.15	40	3300

F.L. EFF	95.4	3/4 LD EFF	95.8	1/2 LD EFF	95.0	GTD EFF	ELECT. TYPE
F.L. PF	86.0	3/4 LD PF	84.0	1/2 LD PF	77.5	95.0	SQ CAGE IND RUN

F.L. TORQUE	LR AMPS @ 460 V	L.R. TORQUE	B.D. TORQUE	F.L. RISE (°C)
294 LB-FT	725	435 LB-FT 148%	750 LB-FT 255%	45

@ 3 FT.	POWER	ROTOR WK²	MAX. LOAD WK²	SAFE STALL TIME	STARTS/HOUR	MOTOR WGT
80 dBA	89 dBA	24.5 LB-FT²	550 LB-FT²	20 SEC.	2	1100 LB.

*** SUPPLEMENTAL INFORMATION ***

DE BRACKET TYPE	ODE BRACKET TYPE	MOUNT TYPE	MOTOR ORIENTATION	SEVERE DUTY	HAZARDOUS LOCATION	DRIP COVER	SCREENS	PAINT
P-BASE	STANDARD	ROUND	SHAFT DOWN	NO	NONE	YES	RODENT	BLUE (ENAMEL)

BEARINGS		GREASE	SHAFT TYPE	SPECIAL DE	SPECIAL ODE	SHAFT MATERIAL	FRAME MATERIAL
DE	ODE						
BALL	EM ANGUL	POLYREX EM	HP	NONE	NONE	1045 HOT ROLLED (C-204)	CAST IRON
6314	7314						

THERMOSTATS	PROTECTORS	WDG RTD's	BRG RTD's	THERMISTORS	CONTROL	SPACE HEATERS
NONE	NOT	NONE	NONE	NONE	FALSE	NA

R1 (ohms/ph)	R2 (ohms/ph)	X1 (ohms/ph)	X2 (ohms/ph)	Xm (ohms/ph)	VIBRATION (in/sec)	FLOAT
0.031	0.021	0.288	0.254	7.571	0.150	DE

* N O T E S *		INVERTER TORQUE: NONE INV. HP SPEED RANGE: NONE
	ENCODER: NONE NONE NONE	NONE PPR
PREPARED BY: FAREEDA DUDEKULA DATE: 9/11/2018	BRAKE: NONE NONE	NONE
	FT-LB: NA VOLTAGE: NONE	HZ:
FORM: 3531 REV_4 2/27/06		UL: V-INS, CONST UL REC

Data Sheet

Date: 11/30/2018

Customer: _____

Attention: _____

Submitted by: FAREEDA DUDEKULA



404TTDS16332

Submittal

Data @ 460 V

Motor Load Data

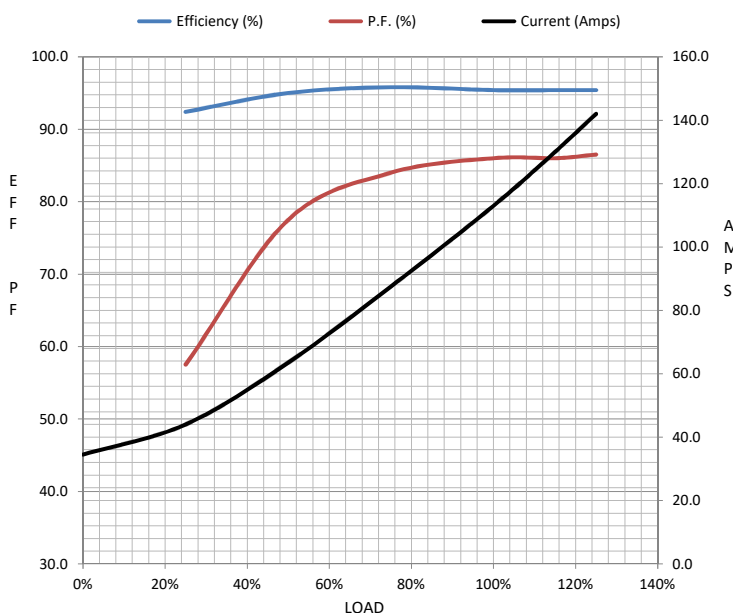
Load	0%	25%	50%	75%	100%	115%	125%	LR	
Current (Amps)	34.5	44.0	63.5	87.5	113	130	142	725	
Torque (ft-lb)	0.00	73.0	147	220	294	338	369	435	
RPM	1800	1796	1792	1788	1785	1,780	1778	0	
Efficiency (%)		92.4	95.0	95.8	95.4	95.4	95.4		
P.F. (%)	7.0	57.5	77.5	84.0	86.0	86.0	86.5	29.0	

Motor Speed Data

	LR	Pull-Up	BD	Rated	Idle
Speed (RPM)	0	900	1725	1785	1800
Current (Amps)	725	650	425	113	34.5
Torque (ft-lb)	435	425	750	294	0.00

Information Block

HP	100.0			
Sync. RPM	1800			
Frame	404			
Enclosure	DP			
Construction	TDS			
Voltage	230/460	V		
Frequency	60	Hz		
Design	A			
LR Code letter	G			
Service Factor	1.15			
Temp Rise @ FL	45	° C		
Duty	CONT			
Ambient	40	° C		
Elevation	1,000	feet		
Rotor/Shaft wk²	24.5	Lb-Ft²		
Ref Wdg	T404450 NONE			
Sound Pressure @ 1M	80	dBA		
VFD Rating	NONE			
Outline Dwg	B-SS555070-2088			
Conn. Diag	A-EE7308K			
Additional Specifications:				
0				
0				
EQUIV CKT (OHMS / PHASE)				
R1	R2	X1	X2	Xm
0.0310	0.0210	0.2880	0.2540	7.5710



Speed -Torque Curve

