

PRODUCT INFORMATION PACKET



Model No: 404TSTDCD6003
Catalog No: GT0248
125,3600,DP,404TSC,3/60/460

Miscellaneous

Regal and Marathon are trademarks of Regal Rexnord Corporation or one of its affiliated companies.
©2022 Regal Rexnord Corporation, All Rights Reserved. MC017097E





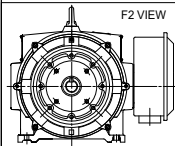
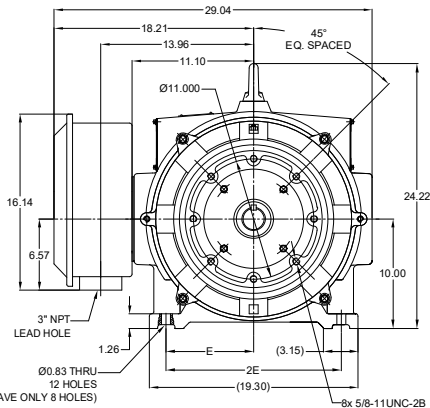
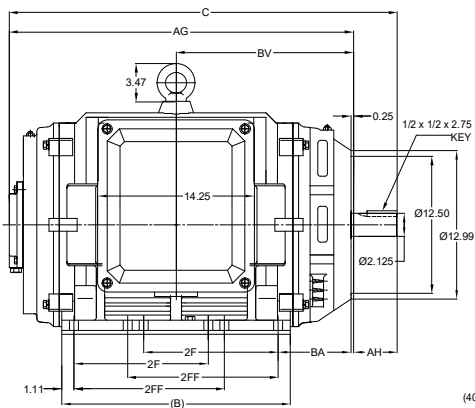
Nameplate Specifications

Technical Specifications

Outline Drawing	SS620753-100	Connection Drawing	EE7341C
-----------------	--------------	--------------------	---------

This is an uncontrolled document once printed or downloaded and is subject to change without notice. Date Created:01/06/2022

DASH NO.	B	C	E	2E	2F	2FF	AG	AH	BA	BV	MOUNTING	FRAME
100	19.29	33.86	8.00	16.00	---	12.25	29.86	4.00	6.62	15.41	F1 OR F2	404TSC
200	20.87	35.44			12.25	13.75	31.44			16.19		404/405TSC



DRAWING REVISION	REVISION BY	REV DATE / @ DATE
B	BSWA	10/03/2021
ECO CR-0001577	APPROVED BY GNK	DATE 10/03/2021
DRAWING UPDATED		
COPYRIGHT (PER REPRESENTATIVE) REGAL BELOIT AMERICA, INC. ALL RIGHTS RESERVED. IMPROVED THAT AND CONFIDENTIAL INFORMATION. THIS DOCUMENT IS THE PROPERTY OF REGAL BELOIT AMERICA, INC. (OWNER) AND CONTAINS OWNER'S PROPRIETARY INFORMATION. ANY PERSONAL INFORMATION OR OTHER DATA BELONGING TO IT IS HEREBY, BY RECEIVING IT, TO AGREE THAT IT AND/OR ANY PART OF IT SHALL NOT BE DISCLOSED TO ANY PERSON, CORPORATION OR OTHER ENTITY, DUPLICATED AND/OR USED, EXCEPT AS EXPRESSLY APPROVED IN WRITING IN ADVANCE BY OWNER. THIS DOCUMENT SHALL BE RETURNED TO OWNER UPON REQUEST. IT MAY BE SUBJECT TO CERTAIN INSTRUCTIONS UNDER APPLICABLE REPORT CONTROL LAWS AND REGULATIONS.		

PRIMARY DIMENSIONS ARE INCH
MM DIMENSIONS IN (BRACKET)
ARE FOR REFERENCE ONLY

DRAWN BY	WY
DATE	07/21/2016
APPROVED BY	
DATE	
REFERENCE	
THIRD ANGLE PROJECTION	

Regal Beloit America, Inc.

DESCRIPTION
OUTLINE
404/405TSC FR-NEMA-ODP CAST IRON

MATERIAL	PROCESS/FINISH
SIZE B	DRAWING NUMBER
SS620753	

SHEET
1 OF 1

THREE PHASE – PART WINDING START DELTA – 6 LEADS

START

CONNECT T1 TO LINE 1
CONNECT T2 TO LINE 2
CONNECT T3 TO LINE 3
T7–T8–T9 OPEN

RUN

CONNECT T1&T7 TO LINE 1
CONNECT T2&T8 TO LINE 2
CONNECT T3&T9 TO LINE 3

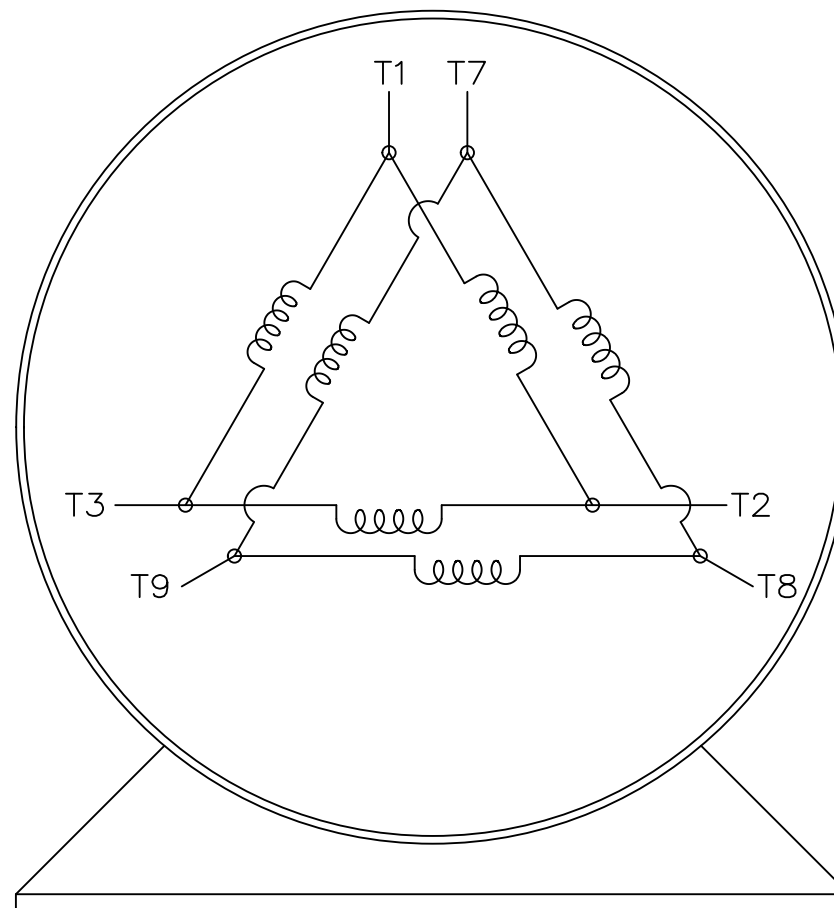
IF MOTOR HAS 2 T'S

START


CONNECT T1,T1 TO LINE 1
CONNECT T2,T2 TO LINE 2
CONNECT T3,T3 TO LINE 3
T7,T7–T8,T8–T9,T9 OPEN

RUN

CONNECT T1,T1&T7,T7 TO LINE 1
CONNECT T2,T2&T8,T8 TO LINE 2
CONNECT T3,T3&T9,T9 TO LINE 3



VIEW OF TERMINAL END

			TOLERANCES UNLESS SPECIFIED		 REGAL-BELOIT CORPORATION	DRAWN BLR 03-09-1998		
			DEC.	INCHES		CHK	ML	03-23-1998
			.X	±	–	APPD	GK	03-23-1998
			.XX	±	–	SCALE 1=1		
E	NOTE ADDED FOR 2 T'S	NAR 17-12-2020	RC	.XXX	±	TITLE CONNECTION DIAGRAM		
D	RE-DRAWN WITH REGAL LOGO ECO-0110493	WGJ 09-30-2016	EMH	.XXXX	±	3ø – 6 LEADS		
NO.	REVISION	BY & DATE	CHK	ANG	±	MAT'L.		
						FMP		
						PREV		
			RFP			SIZE	DRAWING NO.	PAGE OF
			DIST			A	EE7341C	REV. E
						CAD FILE EE7341C		

THIS DRAWING IN DESIGN AND DETAIL IS OUR PROPERTY AND MUST NOT BE USED EXCEPT
IN CONNECTION WITH OUR WORK ALL RIGHTS OF DESIGN AND INVENTION ARE RESERVED
THIS IS AN ELECTRONICALLY GENERATED DOCUMENT – DO NOT SCALE THIS PRINT