

PRODUCT INFORMATION PACKET

marathon®
Motors

Model No: 404TSTD4035

Catalog No: U1119

100 HP Fire Pump Motor, 3 phase, 1800 RPM, 575 V, 404TS Frame, ODP
Fire Pump Motors



Regal and Marathon are trademarks of Regal Rexnord Corporation or one of its affiliated companies.
©2021 Regal Rexnord Corporation, All Rights Reserved. MC017097E

RegalRexnord

Nameplate Specifications

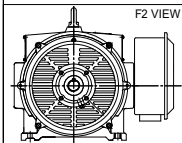
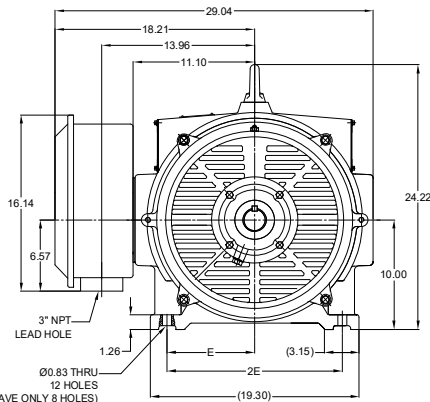
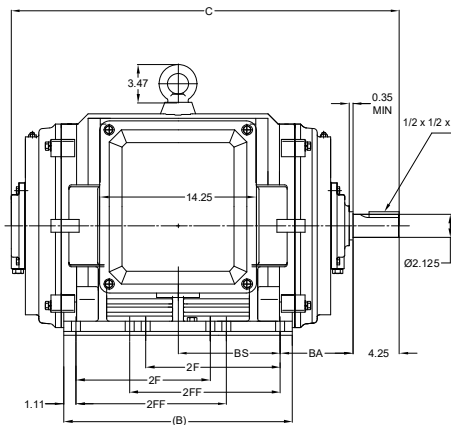
Output HP	100 Hp	Output KW	75.0 kW
Frequency	60 Hz	Voltage	575 V
Current	91.0 A	Speed	1785 rpm
Service Factor	1.15	Phase	3
Efficiency	94.1 %	Power Factor	87
Duty	Continuous	Insulation Class	F
Design Code	B	KVA Code	F
Frame	404TS	Enclosure	Drip Proof
Thermal Protection	No	Ambient Temperature	50 °C
Drive End Bearing Size	6316	Opp Drive End Bearing Size	6315
UL	Listed	CSA	Y
CE	Y	IP Code	23
Number of Speeds	1		

Technical Specifications

Electrical Type	Squirrel Cage Induction Run	Starting Method	Part Wdg Start & Wye Start Delta Run
Poles	4	Rotation	Reversible
Resistance Main	.086 Ohms	Mounting	Rigid Base
Motor Orientation	Horizontal	Drive End Bearing	Ball
Opp Drive End Bearing	Ball	Frame Material	Cast Iron
Shaft Type	TS	Overall Length	33.86 in
Frame Length	19.68 in	Shaft Diameter	2.125 in
Shaft Extension	4.25 in	Assembly/Box Mounting	F1/F2 CAPABLE
Connection Drawing	EE7300BH	Outline Drawing	SS620752-404TS

This is an uncontrolled document once printed or downloaded and is subject to change without notice. Date Created:10/12/2021

DASH NO.	B	C	E	2E	2F	2FF	BA	BS	MOUNTING	FRAME
100	19.29	33.86	8.00	16.00	---	12.25	6.62	8.54	F1 OR F2	404TS
200	20.87	35.44			12.25	13.75		9.32		404/405TS



DRAWING REVISION B	REVISION BY BISWA	REV DATE/ E DATE 10/03/2021
ECO CR-0001577	APPROVED BY GNK	DATE 10/03/2021
ECO DESCRIPTION DRAWING UPDATED		
COPYRIGHT (PER REVISION DATE) REGAL BELOIT AMERICA, INC. ALL RIGHTS RESERVED. IMPROPER PART AND COMPONENT INFORMATION. THIS DOCUMENT IS THE PROPERTY OF REGAL BELOIT AMERICA, INC. (OWNER) AND CONTAINS OWNER'S PROPRIETARY INFORMATION. ANY PERSON, CORPORATION OR OTHER FIRM RECEIVING IT IS HEREBY, BY RECEIVING IT, TO AGREE THAT IT AND/OR ANY PART OF IT SHALL NOT BE DISCLOSED TO ANY PERSON, CORPORATION OR OTHER ENTITY, DUPLICATED AND/OR USED, EXCEPT AS EXPRESSLY APPROVED IN WRITING IN ADVANCE BY OWNER. THIS DOCUMENT SHALL BE RETURNED TO OWNER UPON REQUEST. IT MAY BE SUBJECT TO CERTAIN RESTRICTIONS UNDER APPLICABLE EXPORT CONTROL LAWS AND REGULATIONS.		

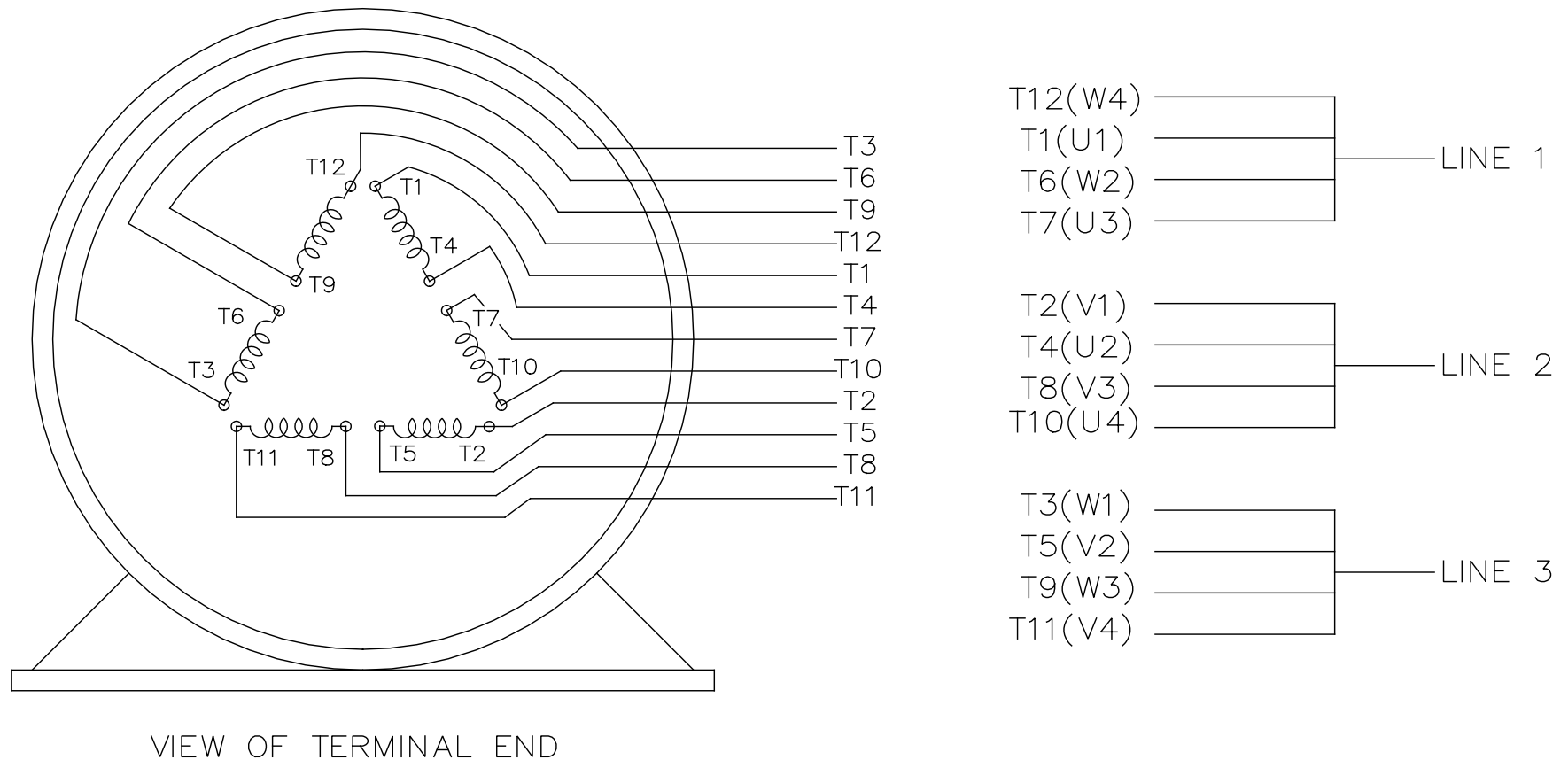
PRIMARY DIMENSIONS ARE INCH
MM DIMENSIONS IN [BRACKETS]
ARE FOR REFERENCE ONLY

DRAWN BY WY	DATE 07/21/2016
APPROVED BY	DATE
REFERENCE	THIRD ANGLE PROJECTION

Regal Beloit America, Inc.

DESCRIPTION OUTLINE	PROCESS/FINISH
404/405TS FR-NEMA-ODP CAST IRON	
SIZE B	DRAWING NUMBER SS620752

SHEET
1 OF 1



				TOLERANCES UNLESS SPECIFIED		 REGAL - BELOIT CORPORATION	DRAWN RJW 02-11-2005						
				DEC.	INCHES		CHK	ML	02-11-2005				
				.X	±.1		APPD	GK	02-11-2005				
				.XX	±.02	TITLE CONNECTION DIAGRAM 12 LEAD- SINGLE VOLTAGE		SCALE					
D	CHANGED TO REGAL TITLE BLOCK	ECO-0108299	WGJ 08/22/2016	EMH	.XXX			±.005	REF				
1	ADDED IEC TERMINAL MARKINGS	CN 41429	JJB 05/24/2007	ML	.XXXX	±.0005	MAT'L.		FMF				
NO.	REVISION		BY & DATE	CHK	ANG	±7'30"	FINISH		PREV				
THIS DRAWING IN DESIGN AND DETAIL IS OUR PROPERTY AND MUST NOT BE USED EXCEPT IN CONNECTION WITH OUR WORK ALL RIGHTS OF DESIGN AND INVENTION ARE RESERVED THIS IS AN ELECTRONICALLY GENERATED DOCUMENT - DO NOT SCALE THIS PRINT				RFP		02-11-2005	CAD FILE ee7300bh		SIZE	DRAWING NO.	PAGE	OF	REV.
				DIST		LB			A	EE7300BH			



P.O. BOX 8003
WAUSAU, WI 54401-8003
PH. 715-675-3311

DATA VOLTS: 460

CERTIFICATION DATA SHEET

CUSTOMER: _____ CUSTOMER P.O. #: _____
ORDER #: _____ REFERENCE MODEL #: 404TSTD4035
CONN. DIAGRAM: EE7300BH CAT #: U1119
OUTLINE: SS620752 CUSTOMER PART #: _____
WINDING: IE2L2504102 NONE 4 MOUNTING: F1/F2 CAPABLE
SPEED: _____

TYPICAL MOTOR PERFORMANCE DATA

HP	KW	SYNC RPM	FL RPM	FRAME	ENCLOSURE	TYPE	KVA CODE	DESIGN
100	75	1800	1785	404TS	DP	TDC	F	B

PH	HZ	VOLTS	AMPS	START TYPE	DUTY	INSL	S.F.	AMB	ELEV.
3	60	575	91	PWS & YDRUN	CONT	F	1.15	50	3300

F.L. EFF	94.1	3/4 LD EFF	94.1	1/2 LD EFF	93.6	GTD EFF	ELECT. TYPE
F.L. PF	87.0	3/4 LD PF	85.0	1/2 LD PF	78.0	93.0	SQ CAGE IND RUN

F.L. TORQUE	LR AMPS @ 460 V	L.R. TORQUE	B.D. TORQUE	F.L. RISE (°C)
295 LB-FT	540	500 LB-FT 169%	690 LB-FT 234%	50

@ 3 FT.	POWER	ROTOR WK²	MAX. LOAD WK²	SAFE STALL TIME	STARTS/HOUR	MOTOR WGT
80 dBA	89 dBA	0.00 LB-FT²	0 LB-FT²	20 SEC.	0	0 LB.

*** SUPPLEMENTAL INFORMATION ***

DE BRACKET TYPE	ODE BRACKET TYPE	MOUNT TYPE	MOTOR ORIENTATION	SEVERE DUTY	HAZARDOUS LOCATION	DRIP COVER	SCREENS	PAINT
STANDARD	STANDARD	RIGID	HORIZONTAL	NO	NONE	NO	NONE	RED (ENAMEL)

BEARINGS		GREASE	SHAFT TYPE	SPECIAL DE	SPECIAL ODE	SHAFT MATERIAL	FRAME MATERIAL
DE	ODE	POLYREX EM	TS	NONE	NONE	1045 HOT ROLLED (C-204)	CAST IRON
BALL	BALL						
6316	6315						

THERMOSTATS	PROTECTORS	WDG RTD's	BRG RTD's	THERMISTORS	CONTROL	SPACE HEATERS
NONE	NOT	NONE	NONE	NONE	FALSE	NA

R1 (ohms/ph)	R2 (ohms/ph)	X1 (ohms/ph)	X2 (ohms/ph)	Xm (ohms/ph)	VIBRATION (in/sec)	FLOAT
0.08	0.033	0.293	0.501	11.839	0.150	ODE

* N O T E S *		INVERTER TORQUE: NONE INV. HP SPEED RANGE: NONE
	ENCODER: NONE NONE NONE	NONE PPR
PREPARED BY: FAREEDA DUDEKULA DATE: 8/31/2018	BRAKE: NONE NONE FT-LB: NA VOLTAGE: NONE	NONE H2:
FORM: 3531 REV_4 2/27/06	UL: NONE	

Data Sheet

Date: 12/14/2018

Customer: _____

Attention: _____

Submitted by: FAREEDA DUDEKULA



404TSTD4035

Submittal

Data @ 575 V

Motor Load Data

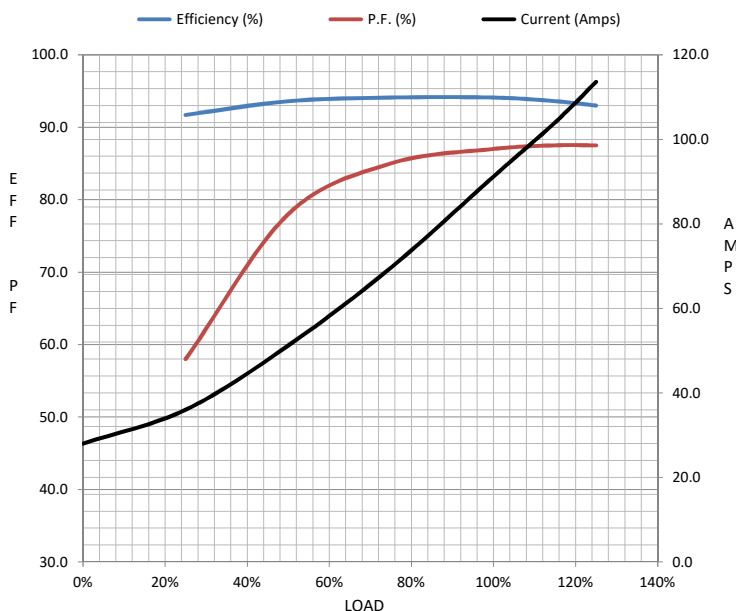
Load	0%	25%	50%	75%	100%	115%	125%	LR	
Current (Amps)	28.0	36.0	51.2	69.6	91.2	104	114	540	
Torque (ft-lb)	0.00	73.5	147	221	295	340	370	500	
RPM	1800	1795	1792	1788	1785	1,782	1780	0	
Efficiency (%)		91.7	93.6	94.1	94.1	93.6	93.0		
P.F. (%)	5.0	58.0	78.0	85.0	87.0	87.5	87.5	36.0	

Motor Speed Data

	LR	Pull-Up	BD	Rated	Idle
Speed (RPM)	0	900	1725	1785	1800
Current (Amps)	540	480	320	91.2	28.0
Torque (ft-lb)	500	425	690	295	0.00

Information Block

HP	100.0			
Sync. RPM	1800			
Frame	404			
Enclosure	DP			
Construction	TDC			
Voltage	575	V		
Frequency	60	Hz		
Design	B			
LR Code letter	F			
Service Factor	1.15			
Temp Rise @ FL	50	° C		
Duty	CONT			
Ambient	40	° C		
Elevation	1,000	feet		
Rotor/Shaft wk²	0.00	Lb-Ft²		
Ref Wdg	IE2L2504102 NONE			
Sound Pressure @ 1M	80	dBA		
VFD Rating	NONE			
Outline Dwg	SS620752			
Conn. Diag	EE7300BH			
Additional Specifications:				
0				
0				
EQUIV CKT (OHMS / PHASE)				
R1	R2	X1	X2	Xm
0.0800	0.0330	0.2930	0.5010	11.8390



Speed -Torque Curve

