

PRODUCT INFORMATION PACKET

marathon®
Motors

Model No: 404TSTD4031

Catalog No: U1119A

Fire Pump 100 HP, 3 Phase DP Motors, 1800 RPM, 60HZ 575 V, 404TS Frame, Rigid Base,
For use on pumps designed for fire pump duty and installed per NFPA-20, U1119A
Fire Pump Motors



Regal and Marathon are trademarks of Regal Rexnord Corporation or one of its affiliated companies.
©2022 Regal Rexnord Corporation, All Rights Reserved. MC017097E

RegalRexnord

Nameplate Specifications

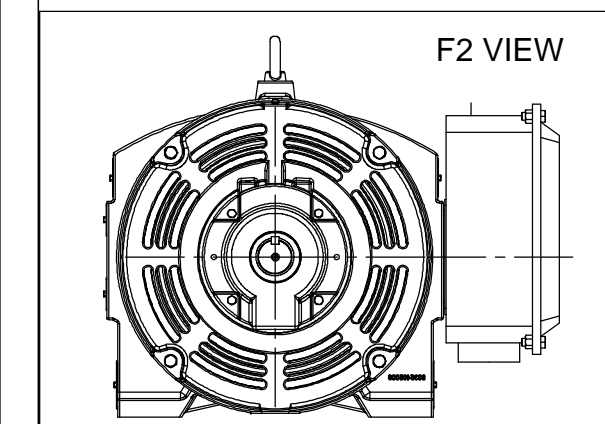
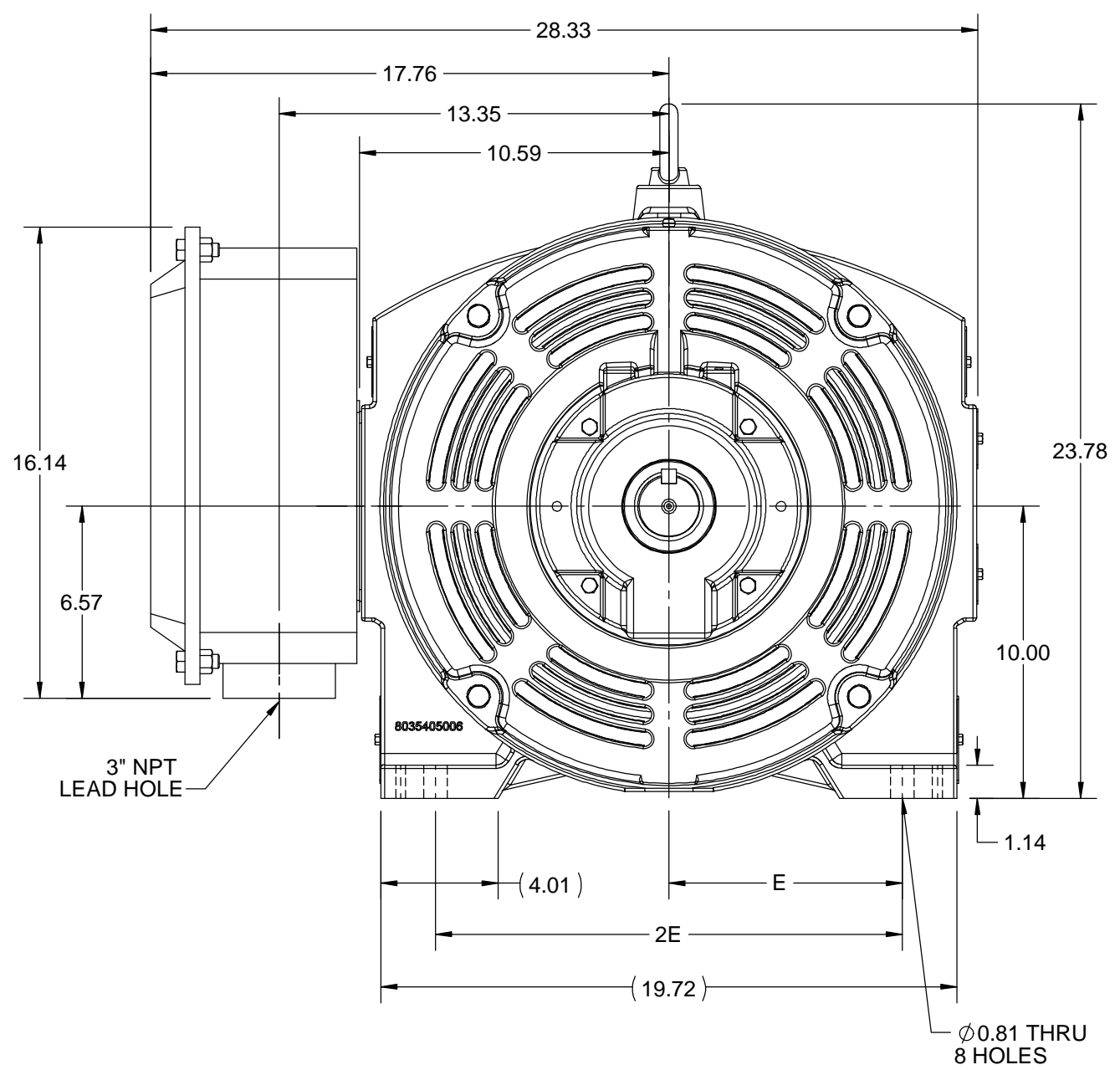
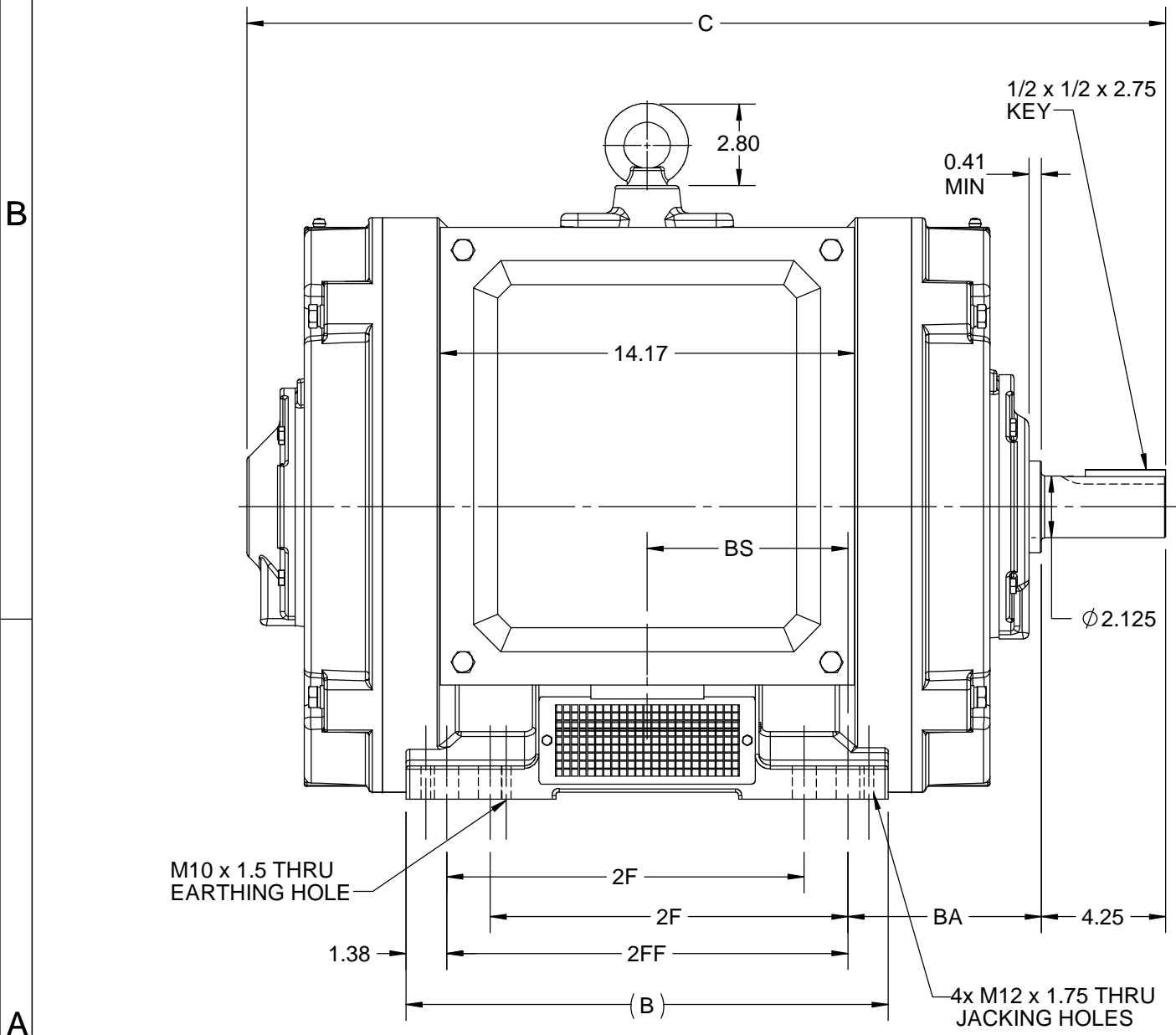
Output HP	100 Hp	Output KW	75.0 kW
Frequency	60 Hz	Voltage	575 V
Current	90.5 A	Speed	1783 rpm
Service Factor	1.15	Phase	3
Efficiency	94.1 %	Power Factor	87.7
Duty	Continuous	Insulation Class	F
Design Code	B	KVA Code	G
Frame	404TS	Enclosure	Drip Proof
Thermal Protection	No	Ambient Temperature	50 °C
Drive End Bearing Size	6316	Opp Drive End Bearing Size	6314
UL	Listed	CSA	Y
CE	Y	IP Code	23
Number of Speeds	1		

Technical Specifications

Electrical Type	Squirrel Cage Induction Run	Starting Method	Part Wdg Start & Wye Start Delta Run
Poles	4	Rotation	Reversible
Resistance Main	.089 Ohms	Mounting	Rigid Base
Motor Orientation	Horizontal	Drive End Bearing	Ball
Opp Drive End Bearing	Ball	Frame Material	Cast Iron
Shaft Type	TS	Shaft Diameter	2.125 in
Assembly/Box Mounting	F1/F2 CAPABLE		
Outline Drawing	SS620989	Connection Drawing	EE7300BH


This is an uncontrolled document once printed or downloaded and is subject to change without notice. Date Created:01/20/2022

4					3				2				1			
B	C	E	2E	2F	2FF	BA	BS	MOUNTING								
16.85	31.44	8.00	16.00	12.25	13.75	6.62	6.87	F1 OR F2								



DRAWING REVISION B	REVISION BY VS	REV DATE/© DATE 25-11-2020
ECO ECO-0195088	APPROVED BY GNK	DATE 25-11-2020
DRAWING UPDATED		
COPYRIGHT (PER REVISION DATE) REGAL BELOIT AMERICA, INC. ALL RIGHTS RESERVED. PROPRIETARY AND CONFIDENTIAL INFORMATION - THIS DOCUMENT IS THE PROPERTY OF REGAL BELOIT AMERICA, INC. ("OWNER") AND CONTAINS OWNER'S PROPRIETARY INFORMATION. ANY PERSON, CORPORATION OR OTHER FIRM RECEIVING IT IS DEEMED, BY RECEIVING IT, TO AGREE THAT IT, AND/OR ANY PART OF IT, SHALL NOT BE DISCLOSED TO ANY PERSON, CORPORATION OR OTHER ENTITY, DUPLICATED, AND/OR USED, EXCEPT AS EXPRESSLY APPROVED IN WRITING IN ADVANCE BY OWNER. THIS DOCUMENT SHALL BE RETURNED TO OWNER UPON REQUEST. IT MAY BE SUBJECT TO CERTAIN RESTRICTIONS UNDER APPLICABLE EXPORT CONTROL LAWS AND REGULATIONS.		

PRIMARY DIMENSIONS ARE INCH
mm DIMENSIONS IN [BRACKETS]
ARE FOR REFERENCE ONLY

DRAWN BY VS	 Regal Beloit America, Inc.	
DATE 11/01/2019		
APPROVED BY SBD	DESCRIPTION OUTLINE 404/405TS FR NEMA ODP	
DATE 11/01/2019		
REFERENCE	MATERIAL	PROCESS/FINISH
THIRD ANGLE PROJECTION	SIZE B	DRAWING NUMBER SS620989
		SHEET 1 OF 1



				TOLERANCES UNLESS SPECIFIED		 REGAL-BELOIT CORPORATION	DRAWN RJW 02-11-2005						
				DEC.	INCHES		CHK	ML	02-11-2005				
				.X	±.1		APPD	GK	02-11-2005				
				.XX	±.02	TITLE CONNECTION DIAGRAM 12 LEAD- SINGLE VOLTAGE		SCALE					
D	CHANGED TO REGAL TITLE BLOCK	ECO-0108299	WGJ 08/22/2016	EMH	.XXX			±.005	REF				
1	ADDED IEC TERMINAL MARKINGS	CN 41429	JJB 05/24/2007	ML	.XXXX	±.0005	MAT'L.		FMF				
NO.	REVISION		BY & DATE	CHK	ANG	±7'30"	FINISH		PREV				
THIS DRAWING IN DESIGN AND DETAIL IS OUR PROPERTY AND MUST NOT BE USED EXCEPT IN CONNECTION WITH OUR WORK ALL RIGHTS OF DESIGN AND INVENTION ARE RESERVED THIS IS AN ELECTRONICALLY GENERATED DOCUMENT - DO NOT SCALE THIS PRINT				RFP		02-11-2005	CAD FILE ee7300bh		SIZE	DRAWING NO.	PAGE	OF	REV.
				DIST		LB	A	EE7300BH		C			



P.O. BOX 8003
WAUSAU, WI 54401-8003
PH. 715-675-3311

DATA VOLTS: 575

CERTIFICATION DATA SHEET

CUSTOMER:**ORDER #:****CONN. DIAGRAM:****OUTLINE:****WINDING:****SPEED:**

EE7300BH

SS620989

HA22504104

NONE

4

CUSTOMER P.O. #:**REFERENCE MODEL #:** 404TSTD4031**CAT #:** U1119A**CUSTOMER PART #:****MOUNTING:** F1/F2 CAPABLE

TYPICAL MOTOR PERFORMANCE DATA

HP	KW	SYNC RPM	FL RPM	FRAME	ENCLOSURE	TYPE	KVA CODE	DESIGN
100	75	1800	1783	404TS	DP	TDC	G	B

PH	HZ	VOLTS	AMPS	START TYPE	DUTY	INSL	S.F.	AMB	ELEV.
3	60	575	90.5	PWS & YDRUN	CONT	F	1.15	50	3300

F.L. EFF	94.1	3/4 LD EFF	94.5	1/2 LD EFF	94.4	GTD EFF	ELECT. TYPE
F.L. PF	87.7	3/4 LD PF	85.4	1/2 LD PF	78.5	93.6	SQ CAGE IND RUN

F.L. TORQUE	LR AMPS @ 460 V	L.R. TORQUE	B.D. TORQUE	F.L. RISE (° C)
294 LB-FT	560	530 LB-FT	180% 735 LB-FT	250% 70

SOUND PRESSURE @ 3 FT.	SOUND	POWER	ROTOR WK ²	MAX. LOAD WK ²	SAFE STALL TIME	STARTS/HOUR	APPROX.	MOTOR WGT
78 dBA	87 dBA		31.30 LB-FT ²	170 LB-FT ²	22 SEC.	2	1070	LB.

*** SUPPLEMENTAL INFORMATION ***

DE BRACKET TYPE	ODE BRACKET TYPE	MOUNT TYPE	MOTOR ORIENTATION	SEVERE DUTY	HAZARDOUS LOCATION	DRIP COVER	SCREENS	PAINT
STANDARD	STANDARD	RIGID	HORIZONTAL	NO	NONE	YES	RODENT	RED (ENAMEL)

BEARINGS	GREASE	SHAFT TYPE	SPECIAL DE	SPECIAL ODE	SHAFT	MATERIAL	FRAME MATERIAL
DE ODE							
BALL BALL	POLYREX EM	TS	NONE	NONE	1045 HOT ROLLED (C-204)		CAST IRON
6316 6314							

THERMOSTATS	PROTECTORS	WDG RTD's	BRG RTD's	THERMISTORS	CONTROL	SPACE	HEATERS
NONE	NOT	NONE	NONE	NONE	FALSE		NA

R1 (ohms/ph)	R2 (ohms/ph)	X1 (ohms/ph)	X2 (ohms/ph)	Xm (ohms/ph)	VIBRATION (in/sec)	FLOAT
0.1359375	0.05625	0.4765625	0.7734375	18.309375	0.150	ODE

* N O T E s *		INVERTER TORQUE: NONE
		INV. HP SPEED RANGE: NONE
		ENCODER: NONE
		NONE
		NONE PPR

PREPARED BY:	BRAKE: NONE
DATE: 11/17/2021	NONE NONE
	FT-LB: NA
	VOLTAGE: NONE
	HZ:
FORM: 3531 REV. 4 2/27/06	UL: NO LETTER - ALL BRANDS-UL LISTED FIRE PUMP MOTORS

