

PRODUCT INFORMATION PACKET

Model No: 365TTGS18033
Catalog No: 365TTGS18033
75,1500,EPFC,365TDV,3/50/690

Regal and are trademarks of Regal Rexnord Corporation or one of its affiliated companies.
©2022 Regal Rexnord Corporation, All Rights Reserved. MC017097E



Nameplate Specifications

Output HP	75 Hp	Output KW	56.0 kW
Frequency	50 Hz	Voltage	690 V
Current	59.5 A	Speed	1475 rpm
Service Factor	1	Phase	3
Efficiency	93 %	Power Factor	85
Duty	Continuous	Insulation Class	F
Design Code	B	KVA Code	F
Frame	365TDV	Enclosure	Explosion Proof Fan cooled
Thermal Protection	No	Ambient Temperature	45 °C
Drive End Bearing Size	NU314	Opp Drive End Bearing Size	6312
UL	No	CSA	N
CE	N	IP Code	56
Hazardous Location	EXP PROOF CL I GR D T2A	Number of Speeds	1


Technical Specifications

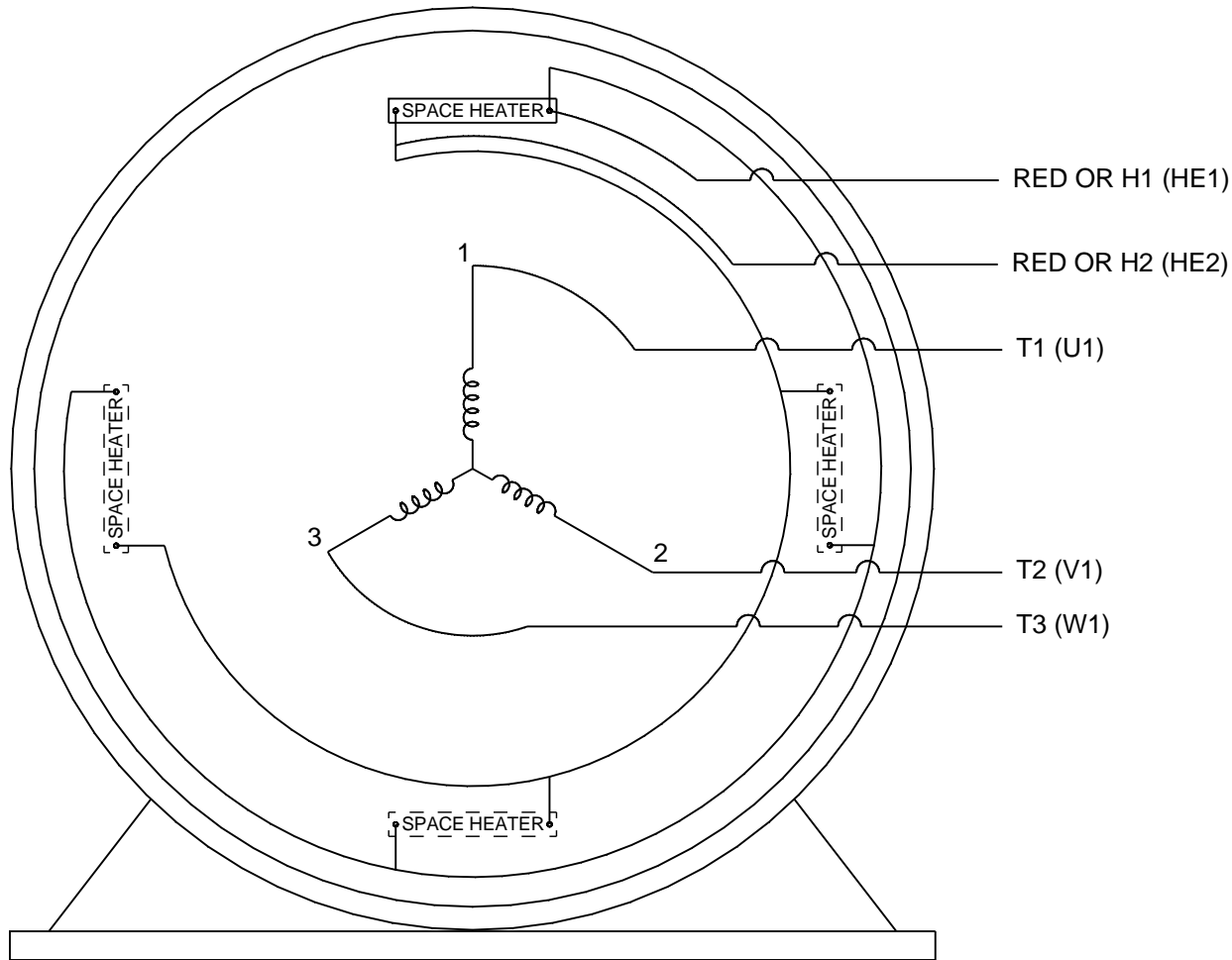
Electrical Type	Squirrel Cage Induction Run	Starting Method	Across The Line
Poles	4	Rotation	Reversible
Resistance Main	.22 Ohms	Mounting	Round
Motor Orientation	Shaft Down	Drive End Bearing	Roller
Opp Drive End Bearing	Ball	Frame Material	Cast Iron
Shaft Type	T	Assembly/Box Mounting	F1/F2 CAPABLE
Connection Drawing	A-EE7300X	Outline Drawing	B-SS518555-1450

This is an uncontrolled document once printed or downloaded and is subject to change without notice. Date Created:04/23/2022



1. CONDUIT BOX CAN BE ROTATED IN 90° STEPS.
2. NAMEPLATES TO BE READ FROM CONDUIT BOX SIDE OF MOTOR.

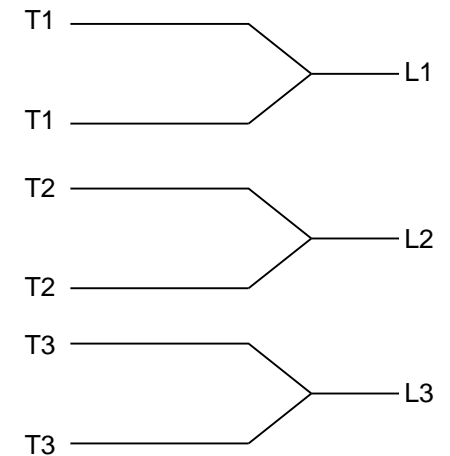
DRAWING REVISION G	REVISION BY NIV	REV DATE/© DATE 04/22/2021	TOLERANCES (EXCEPT AS NOTED): DEC. INCH mm ANGLE .X ±0.1 [±3] ±7° 30" .XX ±0.03 [±0.8] .XXX ±0.005 [±0.13] .XXXX ±0.0005 [±0.013] REMOVE BURRS & BREAK SHARP EDGES: .003/.015 [.08/.38] X 45° CORNER FILLETS: R.02 [.5] MACHINED SURFACES: 200 / 5.1 / INCH ✓ mm ✓ mm DIMENSIONS IN [BRACKETS] ARE FOR REFERENCE ONLY	DRAWN BY KL	<div> Regal Beloit America, Inc.</div>						
REQUEST NUMBER NMR-0213680	APPROVED BY NIV	DATE 04/22/2021		DATE 06-21-2001	DESCRIPTION <div>OUTLINE</div> <div>360TDV-FR-VERT-D'FLANGE-DRIP COVER</div>						
REQUEST NUMBER DESCRIPTION UPDATED OUTLINE WITH AS PER CURRENT STD				APPROVED BY JES							
COPYRIGHT (PER REVISION DATE) REGAL BELOIT AMERICA, INC. ALL RIGHTS RESERVED. PROPRIETARY AND CONFIDENTIAL INFORMATION - THIS DOCUMENT IS THE PROPERTY OF REGAL BELOIT AMERICA, INC. ("OWNER") AND CONTAINS OWNER'S PROPRIETARY INFORMATION. ANY PERSON, CORPORATION OR OTHER FIRM RECEIVING IT IS DEEMED, BY RECEIVING IT, TO AGREE THAT IT, AND/OR ANY PART OF IT, SHALL NOT BE DISCLOSED TO ANY PERSON, CORPORATION OR OTHER ENTITY, DUPLICATED, AND/OR USED, EXCEPT AS EXPRESSLY APPROVED IN WRITING IN ADVANCE BY OWNER. THIS DOCUMENT SHALL BE RETURNED TO OWNER UPON REQUEST. IT MAY BE SUBJECT TO CERTAIN RESTRICTIONS UNDER APPLICABLE EXPORT CONTROL LAWS AND REGULATIONS.				DATE 06-21-2001	PROCESS/FINISH						
			REFERENCE								
						THIRD ANGLE PROJECTION	SIZE B			DRAWING NUMBER SS518555	SHEET 1 OF 1



VIEW OF TERMINAL END

NOTES:

1. WHEN MORE THAN ONE HEATER IS USED, HEATERS MUST BE CONNECTED IN PARALLEL.
2. RED LEADS CONNECTED TO SPACE HEATER CIRCUIT,
3. THREE PHASE MOTOR CONDUIT BOX AT "A" SINGLE VOLTAGE.

IF MOTOR HAS
6 LEADS

A-9806 DECAL

DRAWING REVISION K	REVISION BY T. VUE	DATE 09-15-2016
ECO ECO-0109385	APPROVED BY T. BROWN	DATE 09-15-2016

ECO DESCRIPTION

ADDED HEATER IEC NOTATIONS

COPYRIGHT REGAL BELOIT AMERICA, INC. ALL RIGHTS RESERVED.
 PROPRIETARY AND CONFIDENTIAL INFORMATION - THIS DOCUMENT IS THE PROPERTY OF
 REGAL BELOIT AMERICA, INC. ("OWNER") AND CONTAINS OWNER'S PROPRIETARY
 INFORMATION. ANY PERSON, CORPORATION OR OTHER FIRM RECEIVING IT IS DEEMED,
 BY RECEIVING IT, TO AGREE THAT IT, AND/OR ANY PART OF IT, SHALL NOT BE DISCLOSED
 TO ANY PERSON, CORPORATION OR OTHER ENTITY, DUPLICATED, AND/OR USED, EXCEPT
 AS EXPRESSLY APPROVED IN WRITING IN ADVANCE BY OWNER. THIS DOCUMENT SHALL
 BE RETURNED TO OWNER UPON REQUEST. IT MAY BE SUBJECT TO CERTAIN
 RESTRICTIONS UNDER APPLICABLE EXPORT CONTROL LAWS AND REGULATIONS.

DRAWN BY
PGKDATE
09-18-1996APPROVED BY
MLDATE
10-01-1996

REFERENCE

THIRD ANGLE
PROJECTION

Regal Beloit America, Inc.

DESCRIPTION

CONN DIAGRAM-INTERNAL
 3Ø - SINGLE VOLTAGE

MATERIAL

PROCESS/FINISH

SIZE
A

DRAWING NUMBER

EE7300X

SHEET
1 OF 1