

PRODUCT INFORMATION PACKET

Model No: 365TTGS11071
Catalog No: 365TTGS11071
75,1800,EPFC,365TDV,3/60/230/460

Regal and are trademarks of Regal Rexnord Corporation or one of its affiliated companies.
©2022 Regal Rexnord Corporation, All Rights Reserved. MC017097E



Nameplate Specifications

Output HP	75 Hp	Output KW	56.0 kW
Frequency	60 Hz	Voltage	230/460 V
Current	172.0/86.0 A	Speed	1775 rpm
Service Factor	1.15	Phase	3
Efficiency	94.1 %	Power Factor	85
Duty	Continuous	Insulation Class	F
Design Code	B	KVA Code	G
Frame	365TDV	Enclosure	Explosion Proof Fan cooled
Thermal Protection	Thermostats (N/C)	Ambient Temperature	55 °C
Drive End Bearing Size	NU314	Opp Drive End Bearing Size	6312
UL	No	CSA	N
CE	N	IP Code	56
Hazardous Location	EXP PROOF CL I GR C&D T3C	Number of Speeds	1

Technical Specifications



Electrical Type	Squirrel Cage Inverter Rated	Starting Method	Line Or Inverter
Poles	4	Rotation	Reversible
Resistance Main	.079 Ohms	Mounting	Round
Motor Orientation	Shaft Down	Drive End Bearing	Roller
Opp Drive End Bearing	Ball	Frame Material	Cast Iron
Shaft Type	T	Assembly/Box Mounting	F1/F2 CAPABLE
Connection Drawing	A-EE7308AD	Outline Drawing	B-SS518555-1450

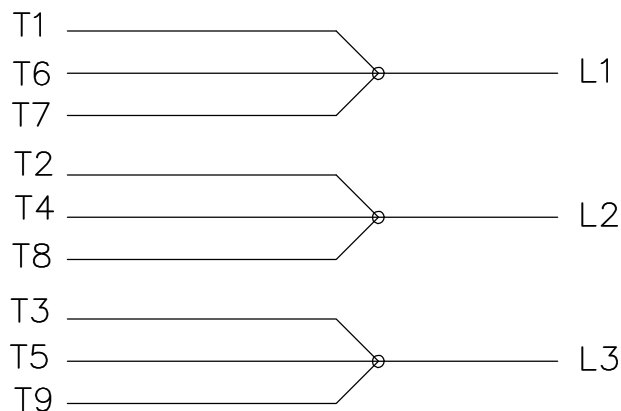
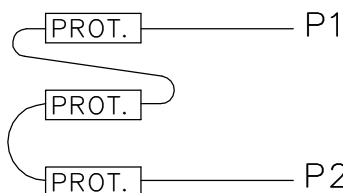
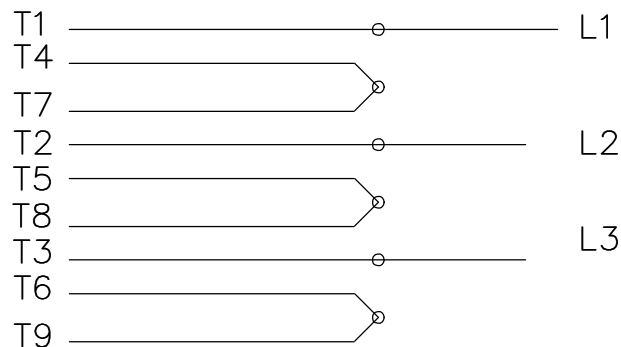
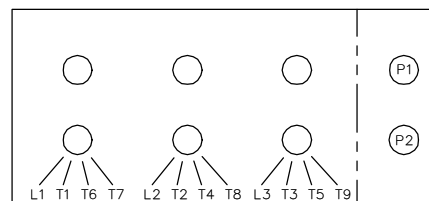
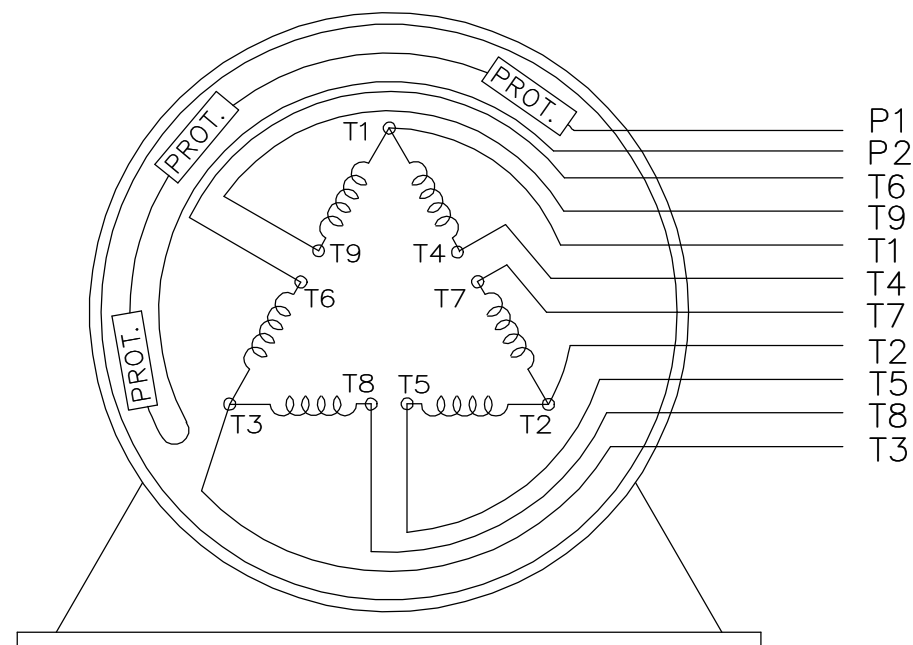
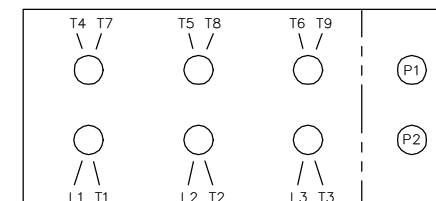
This is an uncontrolled document once printed or downloaded and is subject to change without notice. Date Created:04/23/2022



1. CONDUIT BOX CAN BE ROTATED IN 90° STEPS.
2. NAMEPLATES TO BE READ FROM CONDUIT BOX SIDE OF MOTOR.


DASH	FRAME	BV	C	AG	
1450	360TDV	12.01	37.10	31.23	

DRAWING REVISION G		REVISION BY NIV		REV DATE/© DATE 04/22/2021		TOLERANCES (EXCEPT AS NOTED): DEC. INCH mm ANGLE				DRAWN BY KL		<div>Regal Beloit America, Inc.</div>					
REQUEST NUMBER NMR-0213680		APPROVED BY NIV		DATE 04/22/2021		.X ±0.1 [±3] ±7° 30" .XX ±0.03 [±0.8] .XXX ±0.005 [±0.13] .XXXX ±0.0005 [±0.013]				DATE 06-21-2001							
REQUEST NUMBER DESCRIPTION UPDATED OUTLINE WITH AS PER CURRENT STD COPYRIGHT (PER REVISION DATE) REGAL BELOIT AMERICA, INC. ALL RIGHTS RESERVED. PROPRIETARY AND CONFIDENTIAL INFORMATION - THIS DOCUMENT IS THE PROPERTY OF REGAL BELOIT AMERICA, INC. ("OWNER") AND CONTAINS OWNER'S PROPRIETARY INFORMATION. ANY PERSON, CORPORATION OR OTHER FIRM RECEIVING IT IS DEEMED, BY RECEIVING IT, TO AGREE THAT IT, AND/OR ANY PART OF IT, SHALL NOT BE DISCLOSED TO ANY PERSON, CORPORATION OR OTHER ENTITY, DUPLICATED, AND/OR USED, EXCEPT AS EXPRESSLY APPROVED IN WRITING IN ADVANCE BY OWNER. THIS DOCUMENT SHALL BE RETURNED TO OWNER UPON REQUEST. IT MAY BE SUBJECT TO CERTAIN RESTRICTIONS UNDER APPLICABLE EXPORT CONTROL LAWS AND REGULATIONS.						REMOVE BURRS & BREAK SHARP EDGES: .003/.015 [.08/.38] X 45° CORNER FILLETS: R.02 [.5] MACHINED SURFACES: 200 / 5.1 INCH mm ✓				APPROVED BY JES		DESCRIPTION OUTLINE 360TDV-FR-VERT-D'FLANGE-DRIP COVER					
						mm DIMENSIONS IN [BRACKETS] ARE FOR REFERENCE ONLY				DATE 06-21-2001							
						REFERENCE				MATERIAL				PROCESS/FINISH			
						THIRD ANGLE PROJECTION 				SIZE B		DRAWING NUMBER SS518555				SHEET 1 OF 1	

LOW VOLTAGEHIGH VOLTAGELOW VOLTAGEHIGH VOLTAGE

VIEW OF TERMINAL END

WHEN MORE THAN ONE PROT. IS USED; PROT. ARE CONNECTED IN SERIES

DRAWING REVISION L	REVISION BY JP	REV DATE/© DATE 06-21-2019	TOLERANCES (EXCEPT AS NOTED):				DRAWN BY MJD		<div> Regal Beloit America, Inc.</div>		
ECO ECO-0168744	APPROVED BY MH	DATE 06-21-2019	DEC. .X	INCH ±0.1	mm [±3]	ANGLE ±7° 30"	DATE 12-19-1997				
ECO DESCRIPTION UPDATED TO CURRENT STANDARDS			.XX	±0.02	[±0.5]	APPROVED BY GK			DESCRIPTION CONN DIAGRAM-EXTERNAL		
COPYRIGHT (PER REVISION DATE) REGAL BELOIT AMERICA, INC. ALL RIGHTS RESERVED. PROPRIETARY AND CONFIDENTIAL INFORMATION - THIS DOCUMENT IS THE PROPERTY OF REGAL BELOIT AMERICA, INC. ("OWNER") AND CONTAINS OWNER'S PROPRIETARY INFORMATION. ANY PERSON, CORPORATION OR OTHER FIRM RECEIVING IT IS DEEMED, BY RECEIVING IT, TO AGREE THAT IT, AND/OR ANY PART OF IT, SHALL NOT BE DISCLOSED TO ANY PERSON, CORPORATION OR OTHER ENTITY, DUPLICATED, AND/OR USED, EXCEPT AS EXPRESSLY APPROVED IN WRITING IN ADVANCE BY OWNER. THIS DOCUMENT SHALL BE RETURNED TO OWNER UPON REQUEST. IT MAY BE SUBJECT TO CERTAIN RESTRICTIONS UNDER APPLICABLE EXPORT CONTROL LAWS AND REGULATIONS.			.XXX	±0.005	[±0.13]	DATE 01-07-1998					
			.XXXX	±0.0005	[±0.013]	REFERENCE			MATERIAL		PROCESS/FINISH
			REMOVE BURRS & BREAK SHARP EDGES: .003/.015 [.08/.38] X 45 ° CORNER FILLETS: R.02 [.5] MACHINED SURFACES: 200/INCH 5.1/mm				THIRD ANGLE PROJECTION		SIZE A	DRAWING NUMBER EE7308AD	SHEET 1 OF 1