

# PRODUCT INFORMATION PACKET

Model No: 365TTFS16563  
Catalog No: 365TTFS16563  
75,1800,TEFC,365TV,3/60/460

Regal and are trademarks of Regal Rexnord Corporation or one of its affiliated companies.  
©2022 Regal Rexnord Corporation, All Rights Reserved. MC017097E



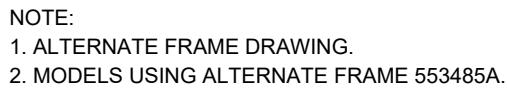
## Nameplate Specifications

Output HP	75 Hp	Output KW	56.0 kW
Frequency	60 Hz	Voltage	460 V
Current	86.0 A	Speed	1780 rpm
Service Factor	1.15	Phase	3
Efficiency	95.4 %	Power Factor	86
Duty	Continuous	Insulation Class	F
Design Code	B	KVA Code	G
Frame	365TV	Enclosure	Totally Enclosed Fan Cooled
Thermal Protection	No Protection	Ambient Temperature	50 °C
Drive End Bearing Size	6314	Opp Drive End Bearing Size	6312
UL	Recognized	CSA	Y
CE	Y	IP Code	54
Number of Speeds	1		



## Technical Specifications

Electrical Type	Squirrel Cage Induction Run	Starting Method	Across The Line
Poles	4	Rotation	Reversible
Resistance Main	.075 Ohms	Mounting	Rigid Base
Motor Orientation	Shaft Up	Drive End Bearing	Ball
Opp Drive End Bearing	Ball	Frame Material	Cast Iron
Shaft Type	T	Assembly/Box Mounting	F1/F2 CAPABLE
Connection Drawing	A-EE7300V	Outline Drawing	B-SS508590-1450

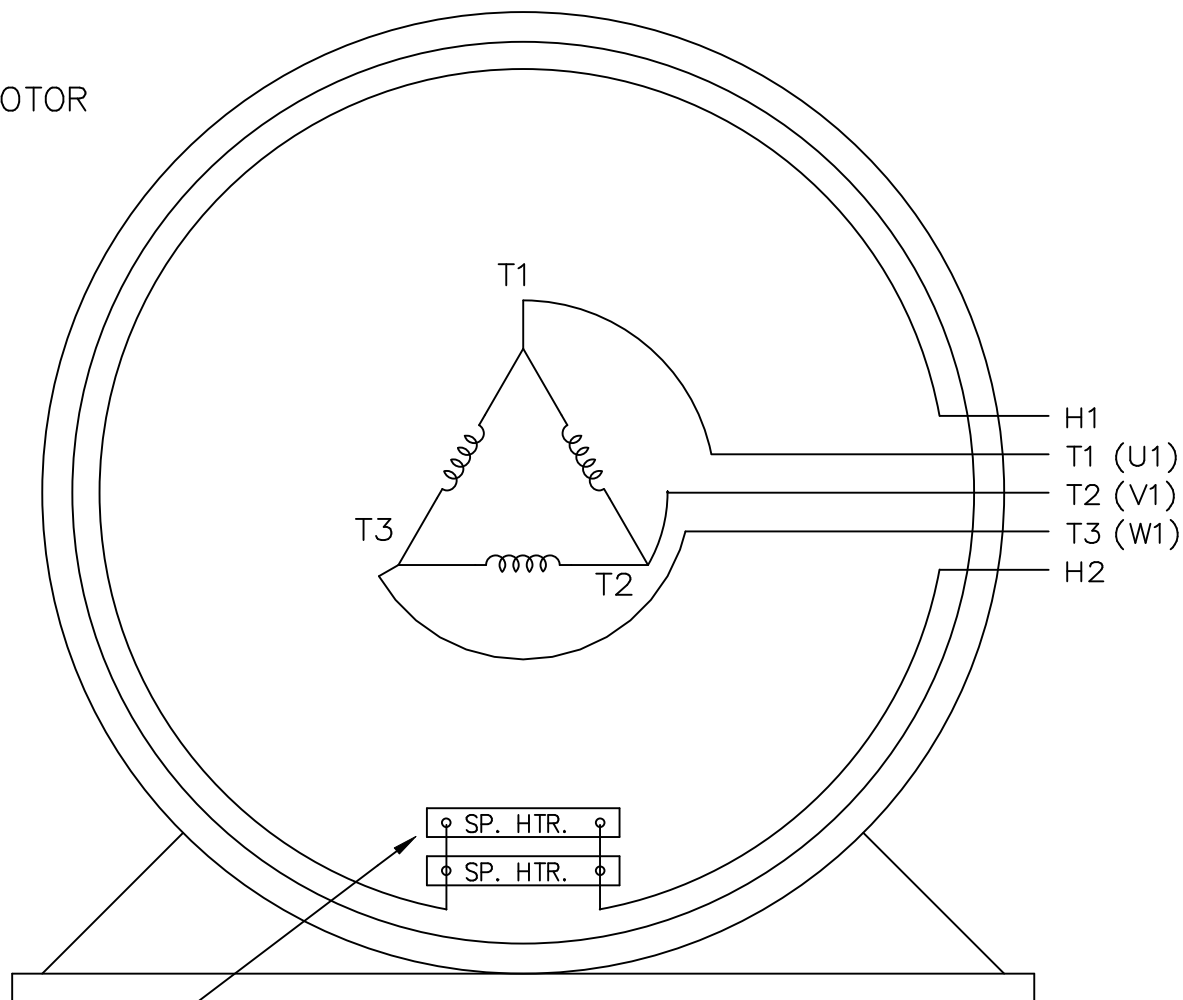
This is an uncontrolled document once printed or downloaded and is subject to change without notice. Date Created:10/13/2022



DASH	FRAME	B	C	2F	2FF	BS
1350	364T	13.25 [336.55]	31.51 [800.35]	11.25 [285.75]	---	5.62 [142.74]
1450	364/365T	14.25 [361.95]	32.51 [825.75]	11.25 [285.75]	12.25 [311.15]	2.38 [60.45]

DRAWING REVISION 1		REVISION BY MJ		REV DATE/© DATE 05/04/2022		TOLERANCES (EXCEPT AS NOTED): DEC. INCH mm ANGLE .X ±0.1 [±3] ±7' 30" .XX ±0.03 [±0.8] .XXX ±0.005 [±0.13] .XXXX ±0.0005 [±0.013]				DRAWN BY TLB		<div>Regal Beloit America, Inc.</div>			
REQUEST NUMBER CR-0007552		APPROVED BY VJ		DATE 05/04/2022						DATE 01-29-1988					
REQUEST NUMBER DESCRIPTION OUTLINE DRAWING IS UPDATED WITH NEW FRAME.						REMOVE BURRS & BREAK SHARP EDGES: .003/.015 [.08/.38] X 45° CORNER FILLETS: R.02 [.5] MACHINED SURFACES: 200 INCH mm 5.1				APPROVED BY ML		OUTLINE 360T FR. - TEFC - TAPPED LEAD HOLE			
COPYRIGHT (PER REVISION DATE) REGAL BELOIT AMERICA, INC. ALL RIGHTS RESERVED. PROPRIETARY AND CONFIDENTIAL INFORMATION - THIS DOCUMENT IS THE PROPERTY OF REGAL BELOIT AMERICA, INC. ("OWNER") AND CONTAINS OWNER'S PROPRIETARY INFORMATION. ANY PERSON, CORPORATION OR OTHER FIRM RECEIVING IT IS DEEMED, BY RECEIVING IT, TO AGREE THAT IT, AND/OR ANY PART OF IT, SHALL NOT BE DISCLOSED TO ANY PERSON, CORPORATION OR OTHER ENTITY, DUPLICATED, AND/OR USED, EXCEPT AS EXPRESSLY APPROVED IN WRITING IN ADVANCE BY OWNER. THIS DOCUMENT SHALL BE RETURNED TO OWNER UPON REQUEST. IT MAY BE SUBJECT TO CERTAIN RESTRICTIONS UNDER APPLICABLE EXPORT CONTROL LAWS AND REGULATIONS.						DATE 01-29-1988				REFERENCE					
												THIRD ANGLE PROJECTION 			

# SINGLE VOLTAGE THREE PHASE MOTOR



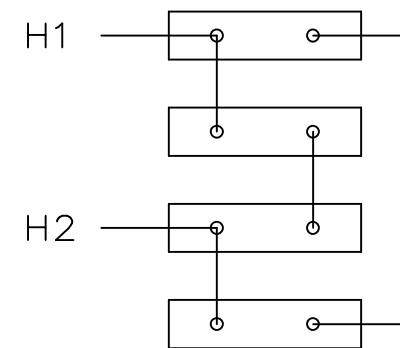
VIEW OF TERMINAL END

WHEN MORE THAN ONE  
SPACE HEATER, CONNECT  
IN PARALLEL

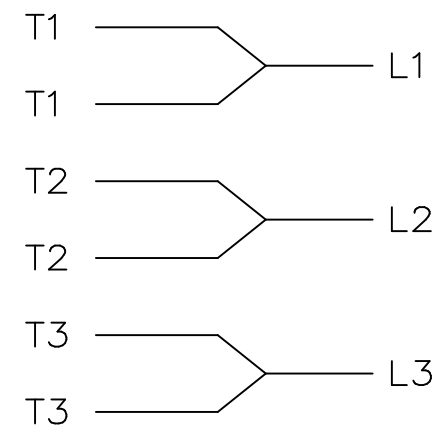
NOTE: IEC LEAD MARKINGS ARE NOTED IN PARENTHESES

EE7300V

SPACE HEATERS  
CONNECTED IN  
SERIES PARALLEL



IF MOTOR OR GEN.  
HAS 6 LEADS



				TOLERANCES UNLESS SPECIFIED		MARATHON ELECTRIC	DRAWN DJK 04-29-1993			
				DEC.	INCHES		CHK	ML	04-30-1993	
7	ADDED IEC LEAD MARKINGS AND NOTE	AK 08-24-2008	SVL	.X	±.1		APPD	TB	04-30-1993	
6	REDRAWN IN AUTOCAD	TAT 08-02-2004	ML	.XX	±.02	TITLE CONNECTION DIAGRAM 3Ø-SINGLE VOLTAGE-WITH SPACE HEATERS	SCALE 1=1			
5	REDRAWN ON CADD, ADDED SPACE HEATERS WITH SERIES PARALLEL CONNECTION 4025224	DJK 05-03-1993		.XXX	±.005		REF			
				.XXXX	±.0005	MAT'L.	FMF			
NO.	REVISION	BY & DATE	CHK	ANG	±7'30"	FINISH	PREV			
THIS DRAWING IN DESIGN AND DETAIL IS OUR PROPERTY AND MUST NOT BE USED EXCEPT IN CONNECTION WITH OUR WORK ALL RIGHTS OF DESIGN AND INVENTION ARE RESERVED THIS IS AN ELECTRONICALLY GENERATED DOCUMENT - DO NOT SCALE THIS PRINT				RFP	CAD FILE ee7300v			SIZE A	DRAWING NO. EE7300V	PAGE OF 7
				DIST						