

PRODUCT INFORMATION PACKET



Model No: 365TTFCD36527
Catalog No: 365TTFCD36527
75,1800,TEFC,365T,3/60/460

Regal and Marathon are trademarks of Regal Rexnord Corporation or one of its affiliated companies.
©2023 Regal Rexnord Corporation, All Rights Reserved. MC017097E





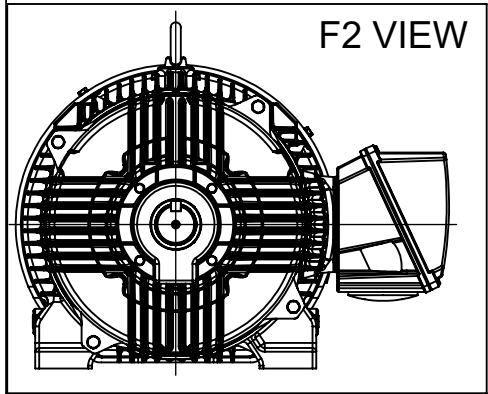
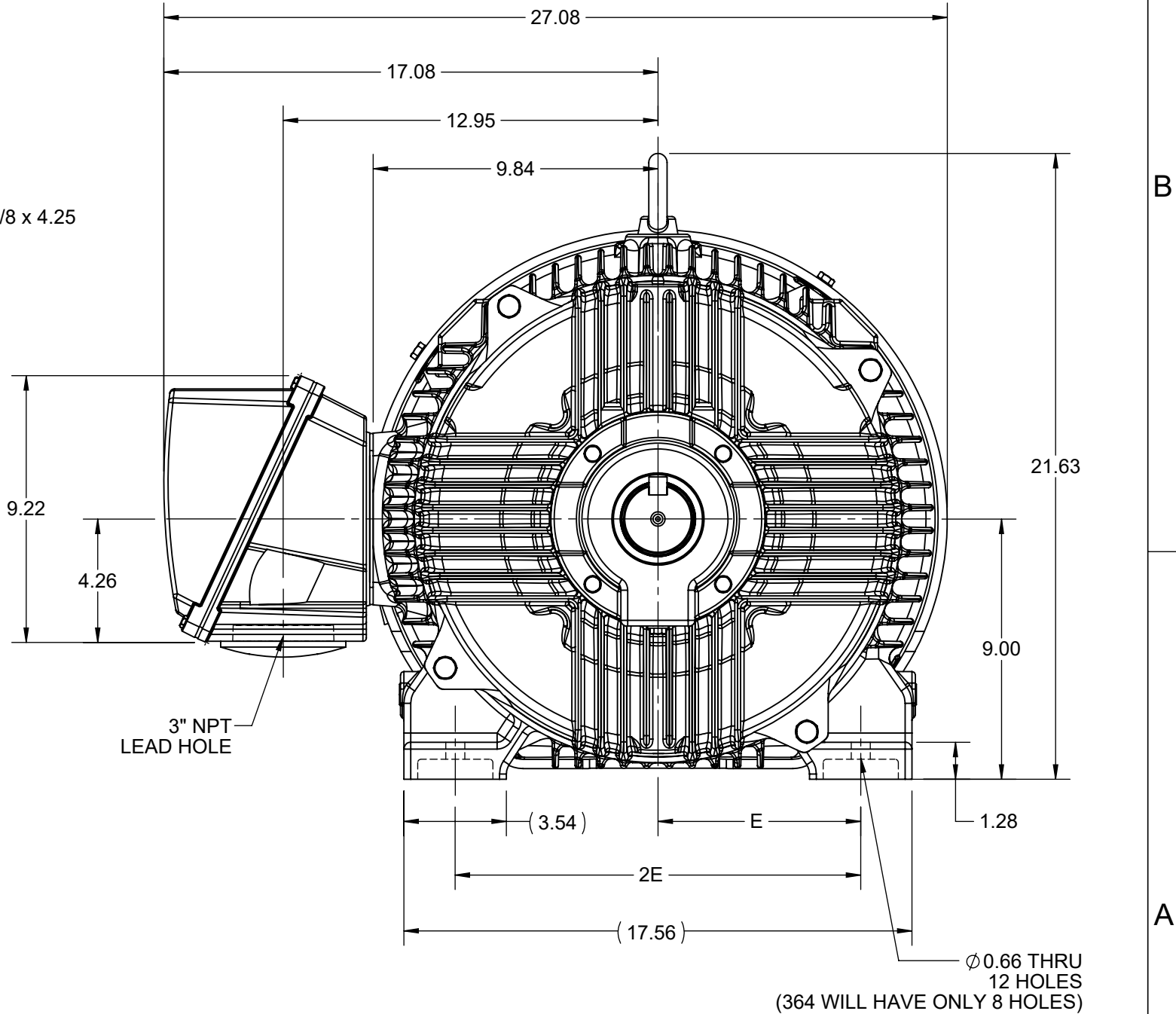
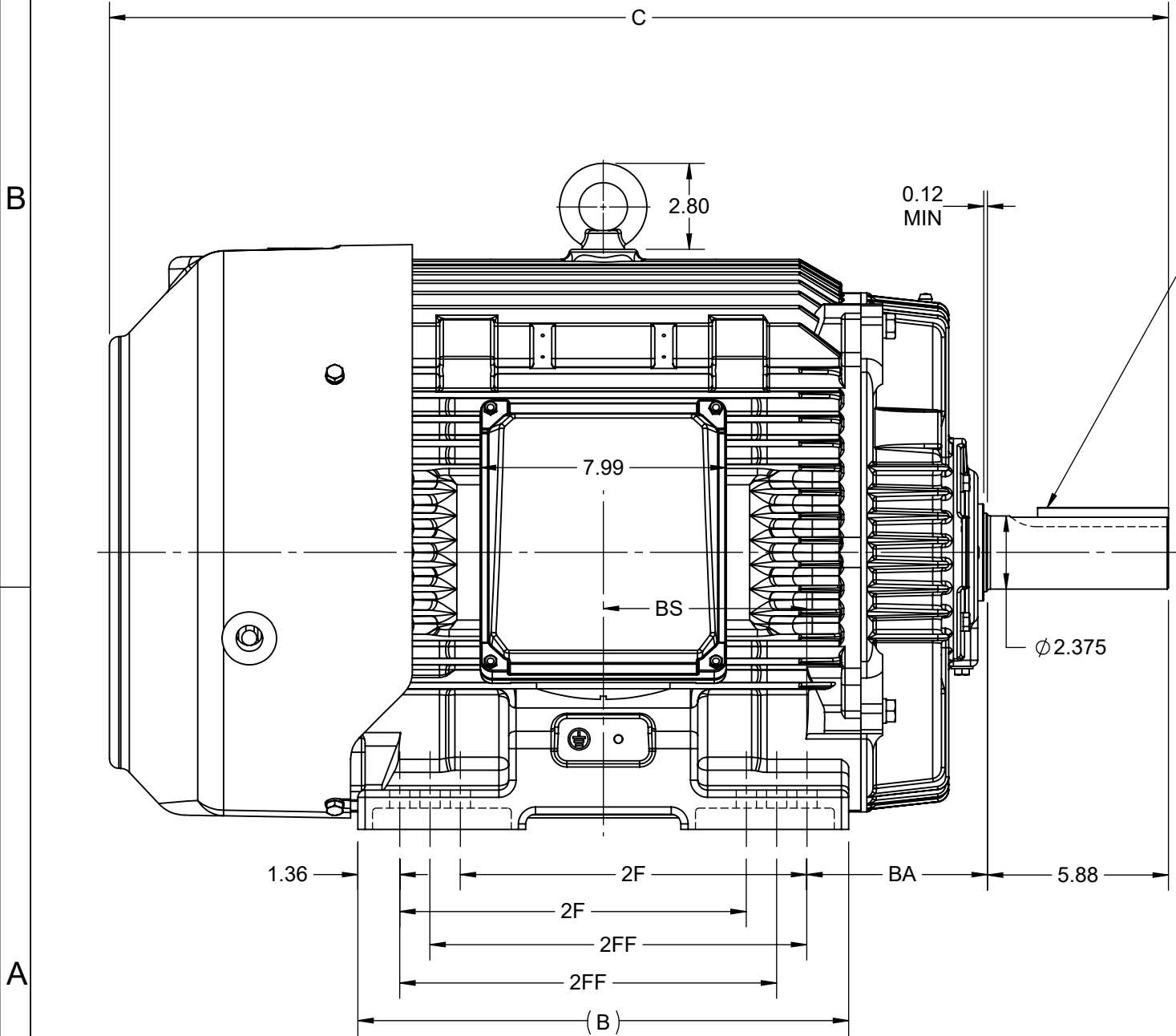
Nameplate Specifications

Technical Specifications

Shaft Diameter	2.375 in		
Outline Drawing	SS557662	Connection Drawing	EE7300V


This is an uncontrolled document once printed or downloaded and is subject to change without notice. Date Created:04/24/2023

4						3					Uncontrolled	
DASH NO.	B	C	E	2E	2F	2FF	BA	BS	MOUNTING	FRAME		
100	14.96	33.40	7.00	14.00	-	11.25	5.88	6.12	F1 OR F2	364T		
200	15.94	34.40			11.25	12.25		6.62		364/365T		

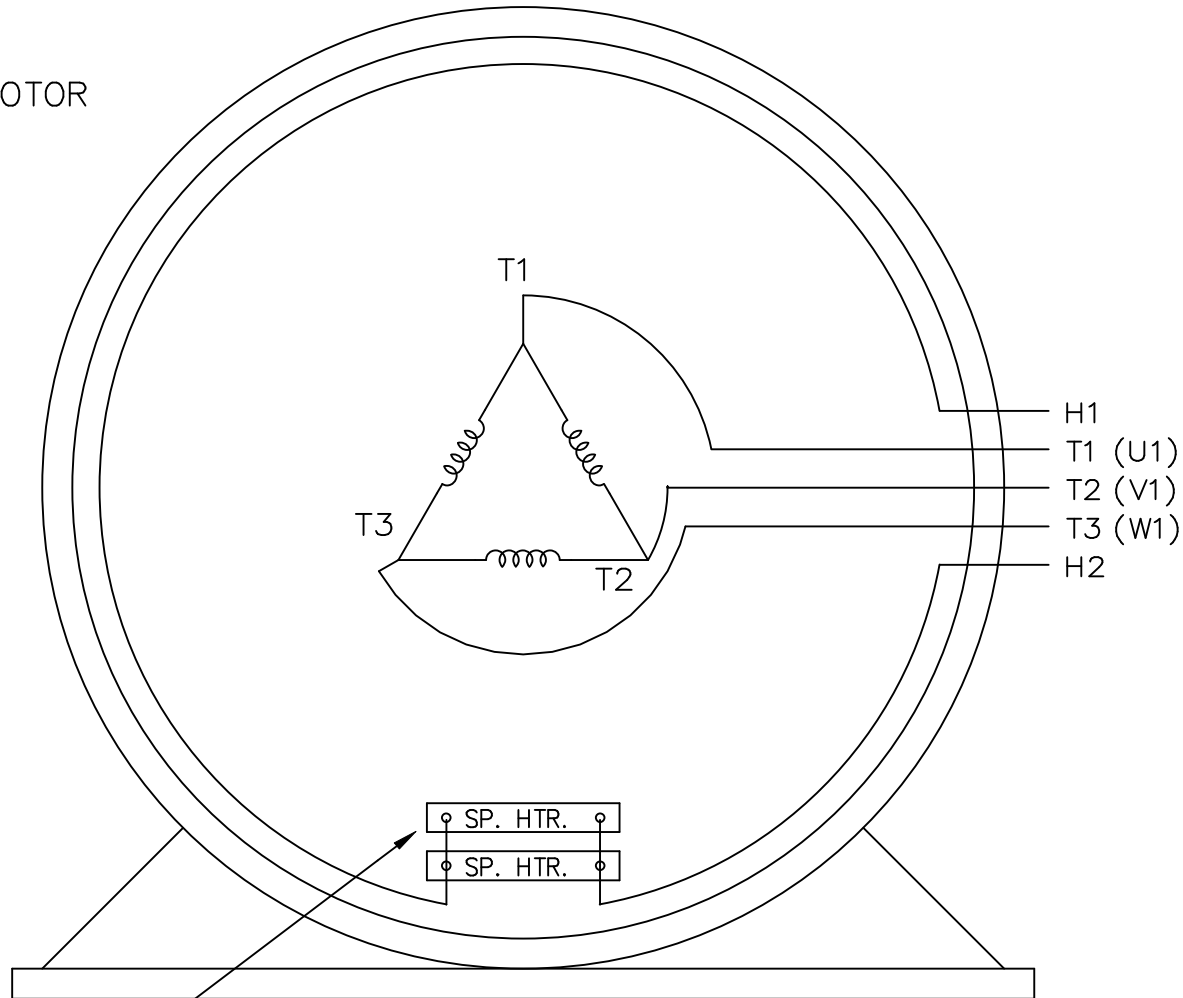


DRAWING REVISION C	REVISION BY S SAHOO	REV DATE/© DATE 17/11/2020
ECO ECO-0194715	APPROVED BY GNK	DATE 17/11/2020
ECO DESCRIPTION		
DRAWING UPDATED		
COPYRIGHT (PER REVISION DATE) REGAL BELOIT AMERICA, INC. ALL RIGHTS RESERVED. PROPRIETARY AND CONFIDENTIAL INFORMATION - THIS DOCUMENT IS THE PROPERTY OF REGAL BELOIT AMERICA, INC. ("OWNER") AND CONTAINS OWNER'S PROPRIETARY INFORMATION. ANY PERSON, CORPORATION OR OTHER FIRM RECEIVING IT IS DEEMED, BY RECEIVING IT, TO AGREE THAT IT, AND/OR ANY PART OF IT, SHALL NOT BE DISCLOSED TO ANY PERSON, CORPORATION OR OTHER ENTITY, DUPLICATED, AND/OR USED, EXCEPT AS EXPRESSLY APPROVED IN WRITING IN ADVANCE BY OWNER. THIS DOCUMENT SHALL BE RETURNED TO OWNER UPON REQUEST. IT MAY BE SUBJECT TO CERTAIN RESTRICTIONS UNDER APPLICABLE EXPORT CONTROL LAWS AND REGULATIONS.		

PRIMARY DIMENSIONS ARE INCH
mm DIMENSIONS IN [BRACKETS]
ARE FOR REFERENCE ONLY

DRAWN BY BISWA	 Regal Beloit America, Inc.		
DATE 01/10/2018			
APPROVED BY SBD	DESCRIPTION		
DATE 01/10/2018	364/365T FR-NEMA-SD & IEEE841		
REFERENCE	MATERIAL	PROCESS/FINISH	
THIRD ANGLE PROJECTION	SIZE B	DRAWING NUMBER SS557662	SHEET 1 OF 1

SINGLE VOLTAGE THREE PHASE MOTOR



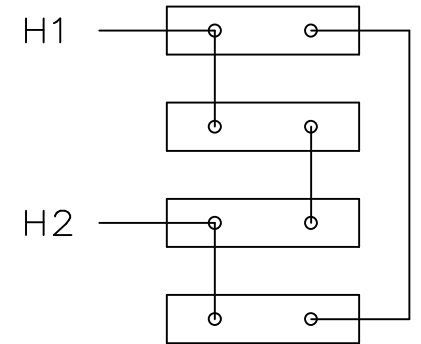
WHEN MORE THAN ONE
SPACE HEATER, CONNECT
IN PARALLEL

VIEW OF TERMINAL END

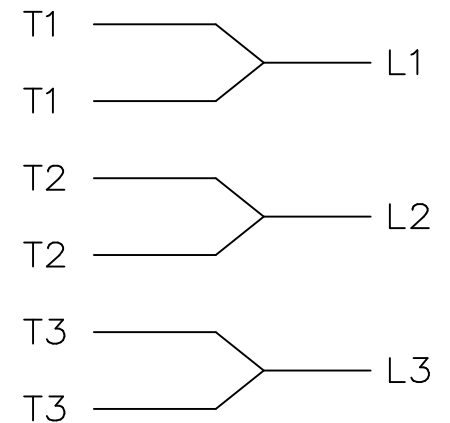
NOTE: IEC LEAD MARKINGS ARE NOTED IN PARENTHESES

EE7300V

SPACE HEATERS
CONNECTED IN
SERIES PARALLEL



IF MOTOR OR GEN.
HAS 6 LEADS



				TOLERANCES UNLESS SPECIFIED		MARATHON ELECTRIC	DRAWN DJK 04-29-1993			
				DEC.	INCHES		CHK	ML	04-30-1993	
7	ADDED IEC LEAD MARKINGS AND NOTE	AK 08-24-2008	SVL	.X	±.1	TITLE CONNECTION DIAGRAM 3Ø-SINGLE VOLTAGE-WITH SPACE HEATERS	APPD	TB	04-30-1993	SCALE 1=1
6	REDRAWN IN AUTOCAD	TAT 08-02-2004	ML	.XX	±.02					REF
5	REDRAWN ON CADD, ADDED SPACE HEATERS WITH	DJK 05-03-1993		.XXX	±.005					FMF
	SERIES PARALLEL CONNECTION 4025224			.XXXX	±.0005					PREV
NO.	REVISION	BY & DATE	CHK	ANG	±7'30"	FINISH				
THIS DRAWING IN DESIGN AND DETAIL IS OUR PROPERTY AND MUST NOT BE USED EXCEPT IN CONNECTION WITH OUR WORK ALL RIGHTS OF DESIGN AND INVENTION ARE RESERVED THIS IS AN ELECTRONICALLY GENERATED DOCUMENT - DO NOT SCALE THIS PRINT				RFP	CAD FILE ee7300v			SIZE A	DRAWING NO. EE7300V	PAGE OF 7
				DIST						