

PRODUCT INFORMATION PACKET



Model No: 365TTFCD36027
Catalog No: 365TTFCD36027
75,1800,TEFC,365TZ,3/60/230/460

Miscellaneous

Regal and Marathon are trademarks of Regal Rexnord Corporation or one of its affiliated companies.
©2022 Regal Rexnord Corporation, All Rights Reserved. MC017097E





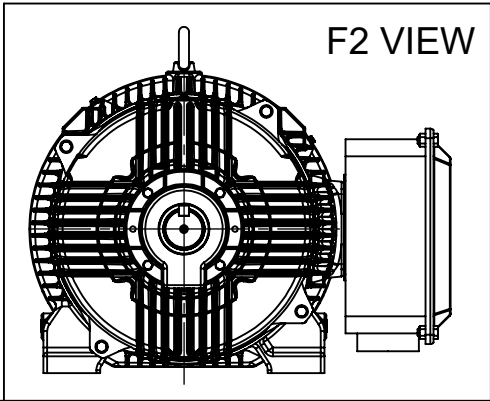
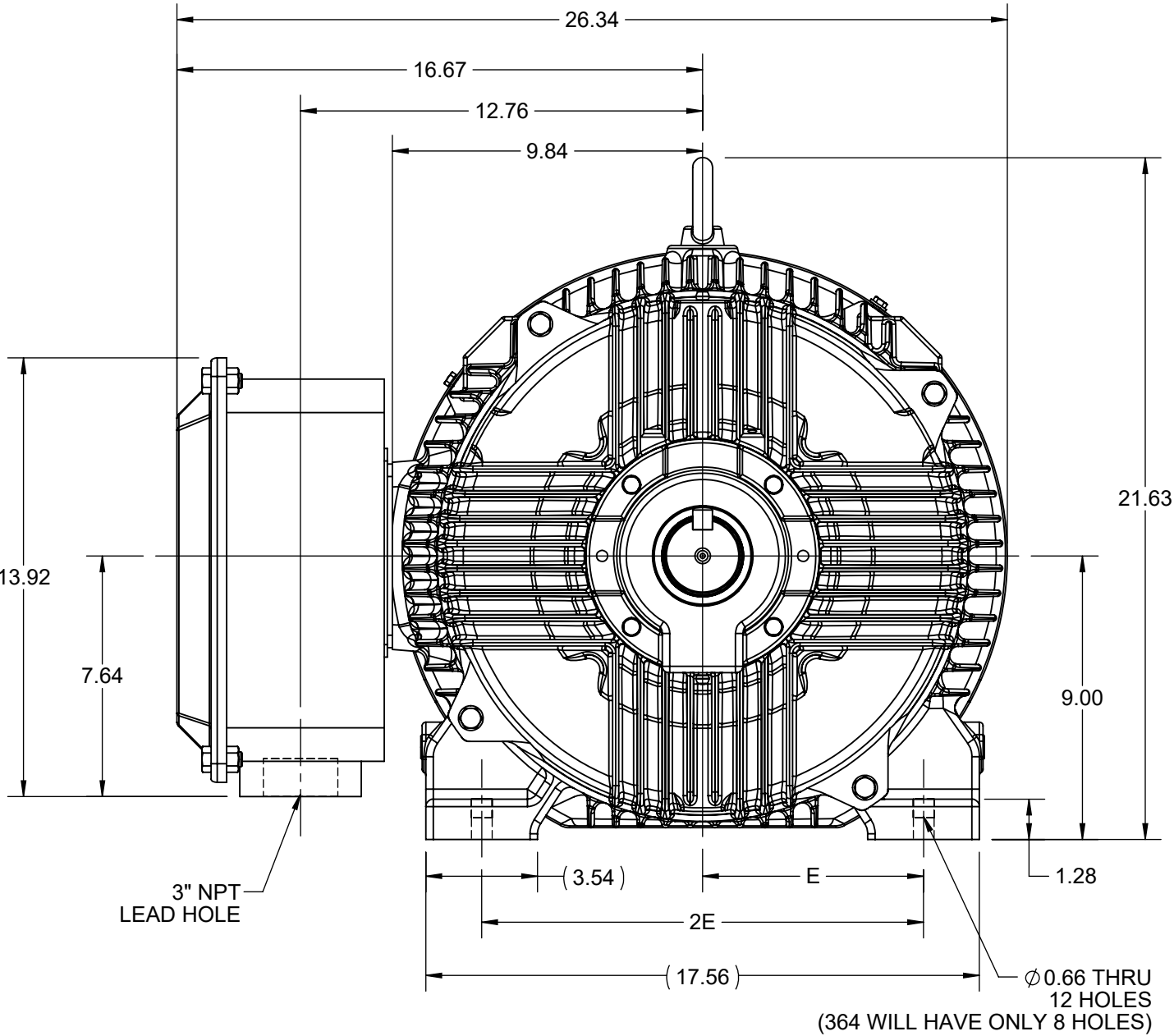
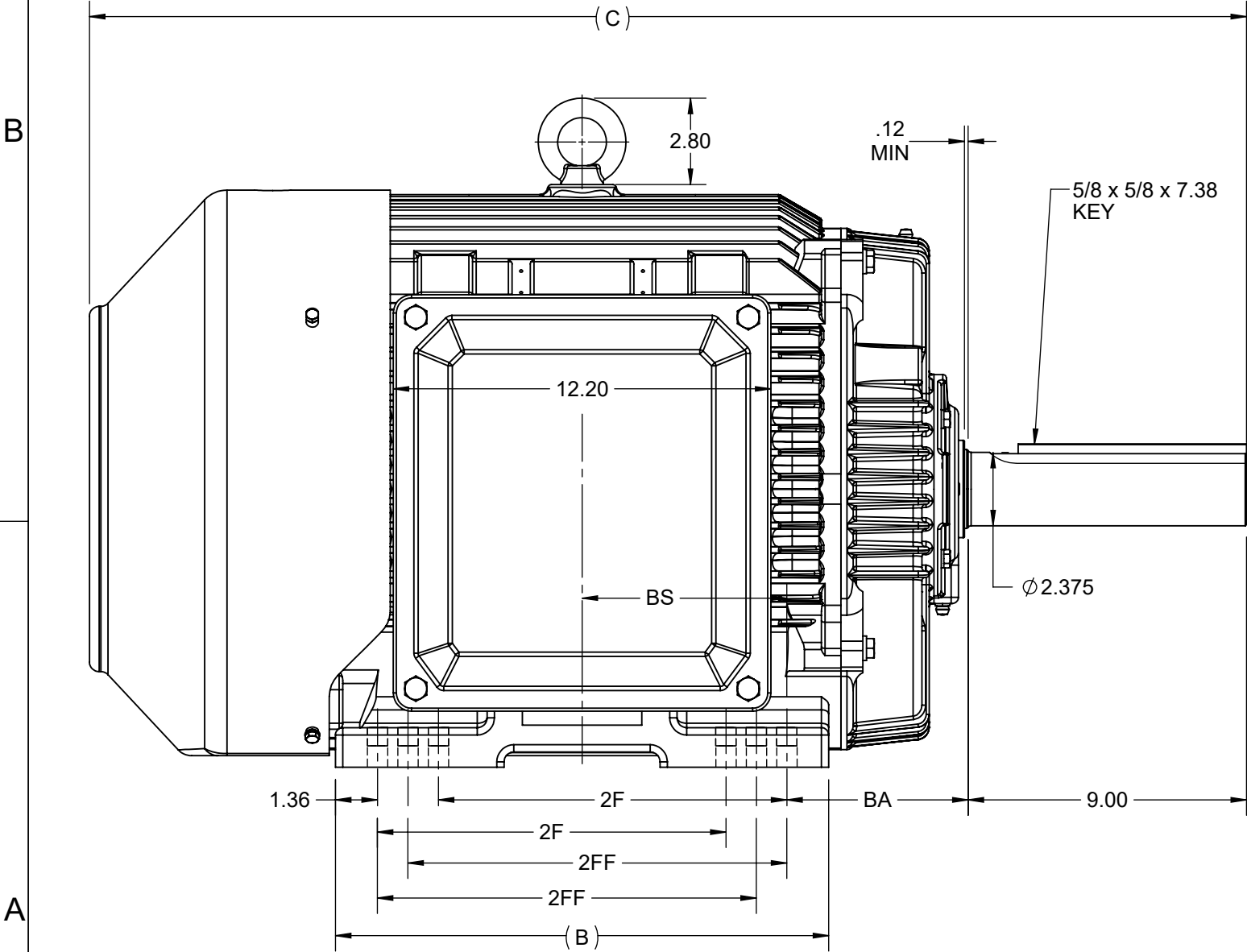
Nameplate Specifications

Technical Specifications

Connection Drawing	A-EE7308AD	Outline Drawing	SS558263-200
--------------------	------------	-----------------	--------------


This is an uncontrolled document once printed or downloaded and is subject to change without notice. Date Created:01/11/2022

4					3					2		1	
DASH NO.	B	C	E	2E	2F	2FF	BA	BS	MOUNTING	FRAME			
100	14.96	36.40	7.00	14.00	-	11.25	5.88	6.12	F1 OR F2	364TZ			
200	15.94	37.40			11.25	12.25		6.62		364/365TZ			

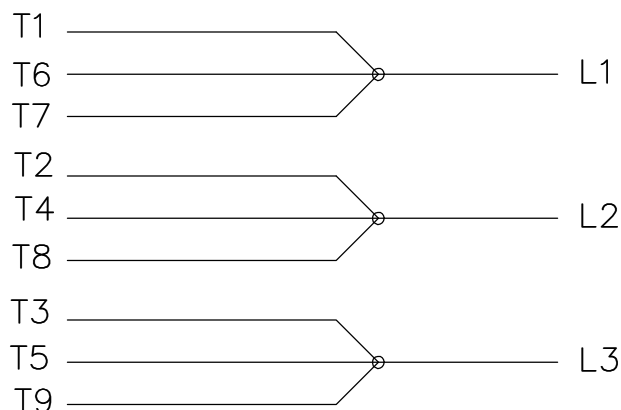


DRAWING REVISION A	REVISION BY NIV	REV DATE/© DATE 22/01/2021
ECO CR-0006246	APPROVED BY NIV	DATE 22/01/2021
ECO DESCRIPTION NEW OUTLINE		
COPYRIGHT (PER REVISION DATE) REGAL BELOIT AMERICA, INC. ALL RIGHTS RESERVED. PROPRIETARY AND CONFIDENTIAL INFORMATION - THIS DOCUMENT IS THE PROPERTY OF REGAL BELOIT AMERICA, INC. ("OWNER") AND CONTAINS OWNER'S PROPRIETARY INFORMATION. ANY PERSON, CORPORATION OR OTHER FIRM RECEIVING IT IS DEEMED, BY RECEIVING IT, TO AGREE THAT IT, AND/OR ANY PART OF IT, SHALL NOT BE DISCLOSED TO ANY PERSON, CORPORATION OR OTHER ENTITY, DUPLICATED, AND/OR USED, EXCEPT AS EXPRESSLY APPROVED IN WRITING IN ADVANCE BY OWNER. THIS DOCUMENT SHALL BE RETURNED TO OWNER UPON REQUEST. IT MAY BE SUBJECT TO CERTAIN RESTRICTIONS UNDER APPLICABLE EXPORT CONTROL LAWS AND REGULATIONS.		

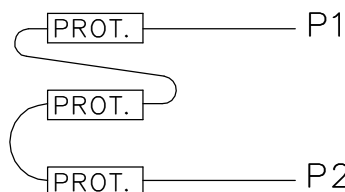
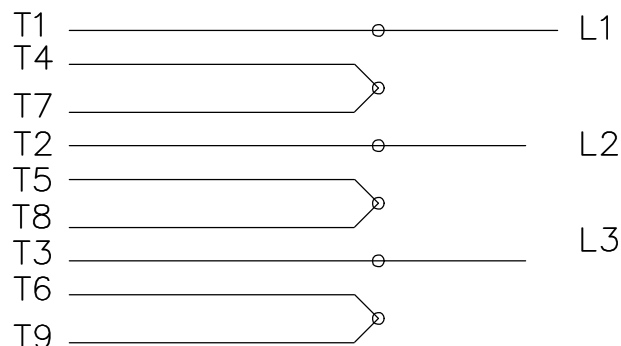
PRIMARY DIMENSIONS ARE INCH
mm DIMENSIONS IN [BRACKETS]
ARE FOR REFERENCE ONLY

DRAWN BY NIV	 Regal Beloit America, Inc.		
DATE 22/01/2021			
APPROVED BY VENKAT	DESCRIPTION OUTLINE 360TZ FR-TEFC		
DATE 22/01/2021			
REFERENCE	MATERIAL	PROCESS/FINISH	
THIRD ANGLE PROJECTION	SIZE B	DRAWING NUMBER SS558263	SHEET 1 OF 1

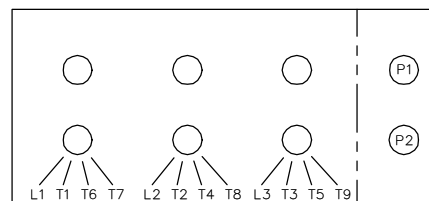
LOW VOLTAGE



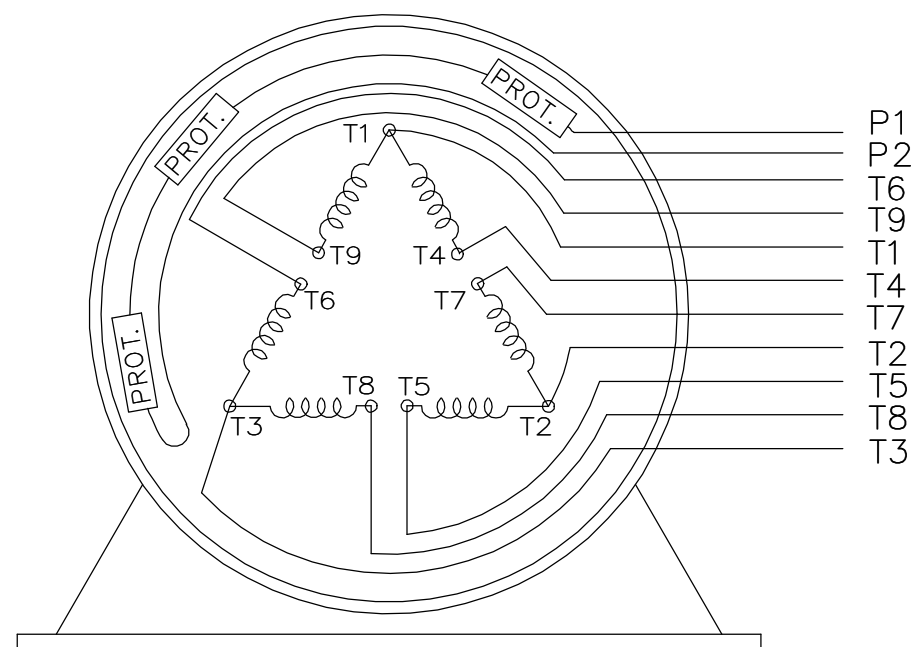
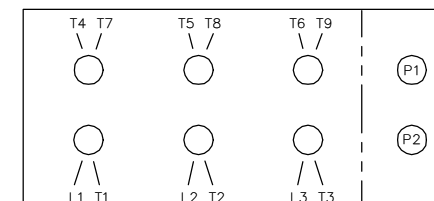
HIGH VOLTAGE



LOW VOLTAGE



HIGH VOLTAGE



VIEW OF TERMINAL END

WHEN MORE THAN ONE PROT. IS USED; PROT. ARE CONNECTED IN SERIES

DRAWING REVISION L		REVISION BY JP		REV DATE/© DATE 06-21-2019		<div>TOLERANCES (EXCEPT AS NOTED):</div> <table><tr><td>DEC.</td><td>INCH</td><td>mm</td><td>ANGLE</td></tr><tr><td>.X</td><td>±0.1</td><td>[±3]</td><td>±7° 30"</td></tr><tr><td>.XX</td><td>±0.02</td><td>[±0.5]</td><td></td></tr><tr><td>.XXX</td><td>±0.005</td><td>[±0.13]</td><td></td></tr><tr><td>.XXXX</td><td>±0.0005</td><td>[±0.013]</td><td></td></tr></table> <div>REMOVE BURRS & BREAK SHARP EDGES: .003/.015 [0.08/.38] X 45 °</div> <div>CORNER FILLETS: R.02 [.5]</div> <div>MACHINED SURFACES: 200/ 5.1</div> <div>INCH √ mm √</div> <div>mm DIMENSIONS IN [BRACKETS]</div> <div>ARE FOR REFERENCE ONLY</div>				DEC.	INCH	mm	ANGLE	.X	±0.1	[±3]	±7° 30"	.XX	±0.02	[±0.5]		.XXX	±0.005	[±0.13]		.XXXX	±0.0005	[±0.013]	
DEC.	INCH	mm	ANGLE																										
.X	±0.1	[±3]	±7° 30"																										
.XX	±0.02	[±0.5]																											
.XXX	±0.005	[±0.13]																											
.XXXX	±0.0005	[±0.013]																											
ECO ECO-0168744		APPROVED BY MH		DATE 06-21-2019																									
<div>ECO DESCRIPTION</div> <div>UPDATED TO CURRENT STANDARDS</div> <div>COPYRIGHT (PER REVISION DATE) REGAL BELOIT AMERICA, INC. ALL RIGHTS RESERVED. PROPRIETARY AND CONFIDENTIAL INFORMATION - THIS DOCUMENT IS THE PROPERTY OF REGAL BELOIT AMERICA, INC. ("OWNER") AND CONTAINS OWNER'S PROPRIETARY INFORMATION. ANY PERSON, CORPORATION OR OTHER FIRM RECEIVING IT IS DEEMED, BY RECEIVING IT, TO AGREE THAT IT, AND/OR ANY PART OF IT, SHALL NOT BE DISCLOSED TO ANY PERSON, CORPORATION OR OTHER ENTITY, DUPLICATED, AND/OR USED, EXCEPT AS EXPRESSLY APPROVED IN WRITING IN ADVANCE BY OWNER. THIS DOCUMENT SHALL BE RETURNED TO OWNER UPON REQUEST. IT MAY BE SUBJECT TO CERTAIN RESTRICTIONS UNDER APPLICABLE EXPORT CONTROL LAWS AND REGULATIONS.</div>																													
<div>DRAWN BY MJD</div> <div>DATE 12-19-1997</div> <div>APPROVED BY GK</div> <div>DATE 01-07-1998</div> <div>REFERENCE</div>						<div><div><div>REGAL®</div><div>Regal Beloit America, Inc.</div></div></div>																							
						DESCRIPTION CONN DIAGRAM-EXTERNAL																							
						MATERIAL		PROCESS/FINISH																					
						THIRD ANGLE PROJECTION		SIZE A		DRAWING NUMBER EE7308AD		SHEET 1 OF 1																	