

PRODUCT INFORMATION PACKET

marathon®
Motors

Model No: 365TTFC6081

Catalog No: E014

50 HP General Purpose Motor, 3 phase, 1200 RPM, 575 V, 365T Frame, TEFC
General Purpose Motors



Regal and Marathon are trademarks of Regal Rexnord Corporation or one of its affiliated companies.
©2021 Regal Rexnord Corporation, All Rights Reserved. MC017097E

RegalRexnord

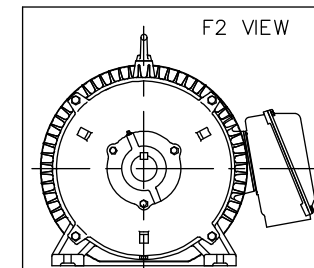
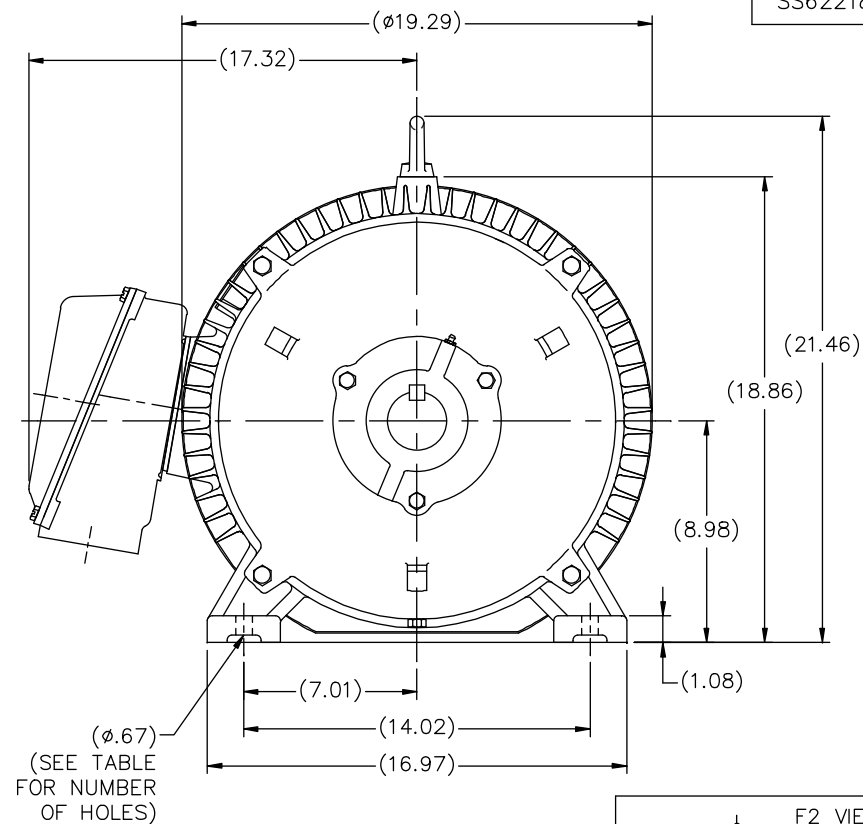
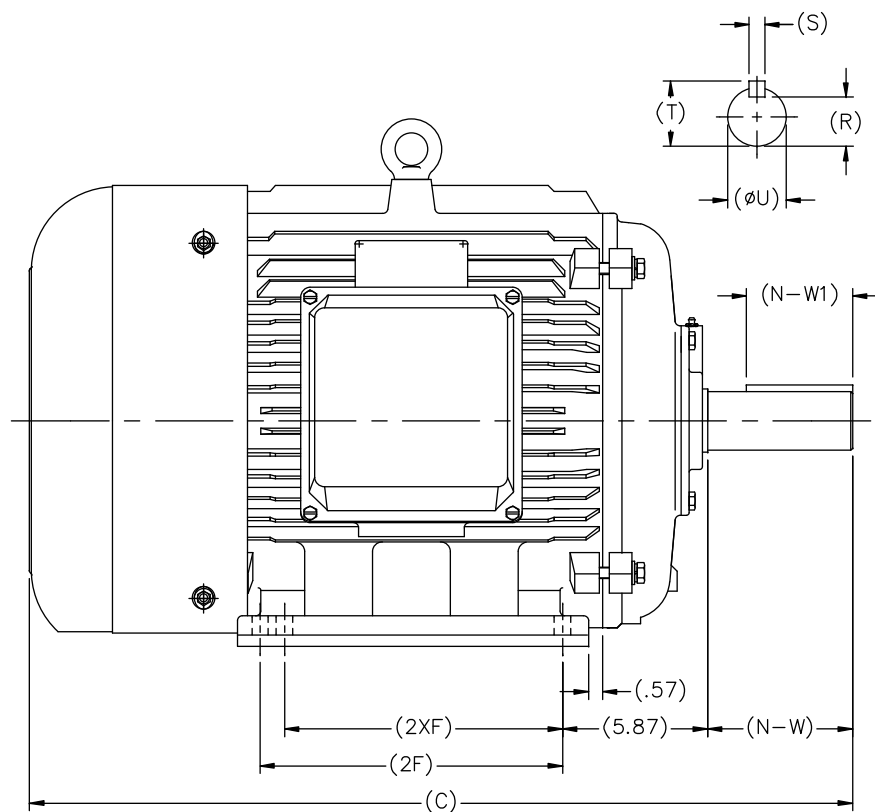
Nameplate Specifications


Output HP	50 Hp	Output KW	37.0 kW
Frequency	60 Hz	Voltage	575 V
Current	50.5 A	Speed	1190 rpm
Service Factor	1.15	Phase	3
Efficiency	94.1 %	Power Factor	79
Duty	Continuous	Insulation Class	F
Design Code	B	KVA Code	G
Frame	365T	Enclosure	Totally Enclosed Fan Cooled
Thermal Protection	No	Ambient Temperature	40 °C
Drive End Bearing Size	6313	Opp Drive End Bearing Size	6313
UL	Recognized	CSA	Y
CE	Y	IP Code	43
Number of Speeds	1		

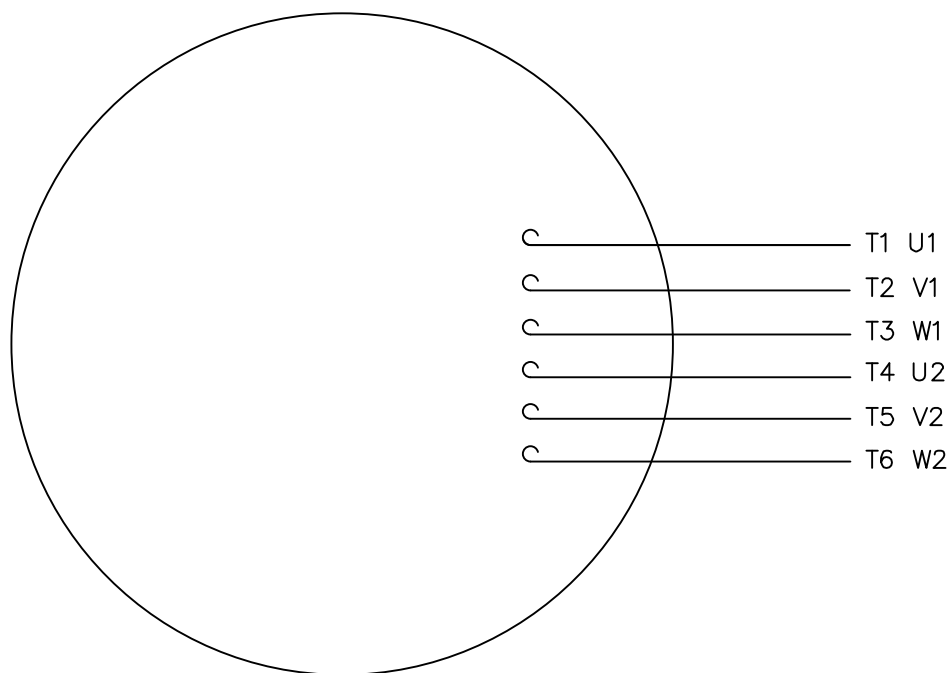
Technical Specifications

Electrical Type	Squirrel Cage Inverter Rated	Starting Method	Line Or Inverter
Poles	6	Rotation	Reversible
Resistance Main	.12 Ohms	Mounting	Rigid Base
Motor Orientation	Horizontal	Drive End Bearing	Ball
Opp Drive End Bearing	Ball	Frame Material	Cast Iron
Shaft Type	T	Overall Length	32.32 in
Shaft Diameter	2.380 in	Shaft Extension	3.74 in
Assembly/Box Mounting	F1/F2 CAPABLE		
Connection Drawing	00519001ME	Outline Drawing	SS622180LN

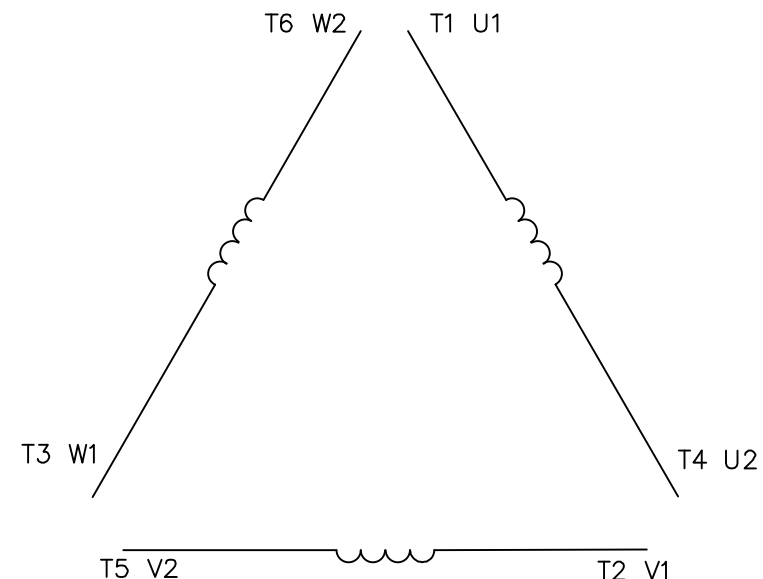
This is an uncontrolled document once printed or downloaded and is subject to change without notice. Date Created:10/12/2021





														TOLERANCES UNLESS SPECIFIED				DRAWN MSG 02-13-2007			
												DEC.		INCHES				CHK ML 02-16-2207			
														.X				APPD SB 02-23-2007			
														.XX ±.03				TITLE OUTLINE			
NT364TS-2	30.20	11.26	---	4	3.74	2.05	1.87	1.59	0.50	2.09			.XXX ±.005		360 FR. — TEFC — (REDESIGNED)		SCALE 1=5				
NT365TS-2	31.18	12.24	11.26	6															REF		
NT364T-4, 6	32.32	11.26	---	4	5.87	4.29	2.37	2.01	0.63	2.64	1 ADDED F2 VIEW		TJW 7/9/2013		SB .XXXX ±.0005		MAT'L				
NT365T-4, 6	33.31	12.24	11.26	6							NO.		REVISION		BY & DATE		CHK ANG ±7'30"		FINISH		PREV
THIS DRAWING IN DESIGN AND DETAIL IS OUR PROPERTY AND MUST NOT BE USED EXCEPT IN CONNECTION WITH OUR WORK ALL RIGHTS OF DESIGN AND INVENTION ARE RESERVED THIS IS AN ELECTRONICALLY GENERATED DOCUMENT — DO NOT SCALE THIS PRINT												RFP		CAD FILE SS622180LN		SIZE B		DRAWING NO. SS622180LN		PAGE OF 1	
FRAME C 2F 2XF HOLES N-W N-W1 ØU R S T												DIST									



LINE LEADS



	L1	L2	L3	JOIN
START (WYE)	T1 U1	T2 V1	T3 U2	(T4,T5,T6) (U2,V2,W2)
RUN (DELTA)	(T1,T6) (U1,W2)	(T2,T4) (V1,U2)	(T3,T5) (W1,V2)	

				TOLERANCES UNLESS SPECIFIED						DRAWN PG 05/07/82	
				DEC.	INCHES					CHK	
				.X	±.1					APPD TEM 05/07/82	
03	ADDED IEC DESIGNATIONS	MOL 04/27/12		.XX	±.01	TITLE EXTERNAL WIRING DIAGRAM STAR START – DELTA RUN			SCALE 1=1		
02	REMOVED OBSOLETE STATUS	KJH 06/28/99		.XXX	±.005				REF		
01	REDRAWN ON CAD	DBT 05/30/97		.XXXX	±.0005	MAT'L. Y–CONNECTED START – DELTA CONNECTED RUN			FMF		
NO.	REVISION	BY & DATE	CHK	ANG	±1/2"	FINISH SINGLE VOLTAGE			PREV		
THIS DRAWING IN DESIGN AND DETAIL IS OUR PROPERTY AND MUST NOT BE USED EXCEPT IN CONNECTION WITH OUR WORK ALL RIGHTS OF DESIGN AND INVENTION ARE RESERVED THIS IS AN ELECTRONICALLY GENERATED DOCUMENT – DO NOT SCALE THIS PRINT				RFP		CAD FILE 00519001ME		SIZE	DRAWING NO.		REV.
				DIST				A	005190–01ME		03

CERTIFICATION DATA SHEET

Model#: 365TTFC6081 AA
 CONN. DIAGRAM: 00519001ME
 OUTLINE: SS622180LN

WINDING#: T18306021 NONE 4
 ASSEMBLY: F1/F2 CAPABLE

TYPICAL MOTOR PERFORMANCE DATA

HP	KW	SYNC. RPM	F.L. RPM	FRAME	ENCLOSURE	KVA CODE	DESIGN
50	37	1200	1190	365T	TEFC	G	B

PH	Hz	VOLTS	FL AMPS	START TYPE	DUTY	INSL	S.F	AMB°C	ELEVATION
3	60	575	50.5	LINE OR INVERTER	CONTINUOUS	F2	1.15/1.15	40	3300

FULL LOAD EFF: 94.1	3/4 LOAD EFF: 94.1	1/2 LOAD EFF: 93.6	GTD. EFF	ELEC. TYPE	NO LOAD AMPS
FULL LOAD PF: 79	3/4 LOAD PF: 74.5	1/2 LOAD PF: 64.5	93	SQ CAGE INV RATED	20.8

F.L. TORQUE	LOCKED ROTOR AMPS	L.R. TORQUE	B.D. TORQUE	F.L. RISE°C
221 LB-FT	288.8	450 LB-FT 204	590 LB-FT 267	75

SOUND PRESSURE @ 3 FT.	SOUND POWER	ROTOR WK^2	MAX. WK^2	SAFE STALL TIME	STARTS /HOUR	APPROX. MOTOR WGT
65 dBA	75 dBA	- LB-FT^2	- LB-FT^2	20 SEC.	2	- LBS.

*** SUPPLEMENTAL INFORMATION ***

DE BRACKET TYPE	ODE BRACKET TYPE	MOUNT TYPE	ORIENTATION	SEVERE DUTY	HAZARDOUS LOCATION	DRIP COVER	SCREENS	PAINT
STANDARD	STANDARD	RIGID	HORIZONTAL	FALSE	NONE	FALSE	NONE	BLUE (ENAMEL)

BEARINGS		GREASE	SHAFT TYPE	SPECIAL DE	SPECIAL ODE	SHAFT MATERIAL	FRAME MATERIAL
DE	OPE						
BALL	BALL						
6313	6313	POLYREX EM	T	NONE	NONE	1045 HOT ROLLED (C-204)	CAST IRON

THERMO-PROTECTORS				THERMISTORS	CONTROL	SPACE /n HEATERS
THERMOSTATS	PROTECTORS	WDG RTDs	BRG RTDs			
NONE	NOT	NONE	NONE	NONE	FALSE	NONE VOLTS

If Inverter equals NONE, contact factory for further information

INVERTER TORQUE: CONSTANT 2:1
 INV. HP SPEED RANGE: 1.5 X BASE SPEED

ENCODER: NONE
 NONE NONE
 NONE NONE PPR

BRAKE: NONE NONE
 NONE P/N NONE
 NONE NONE
 NONE FT-LB NONE V NONE Hz

*
N
O
T
E
S
*

DATE: 06/22/2017 12:39:42 AM
 FORM 3531 REV.3 02/07/99
 ** Subject to change without notice.

Data Sheet

Date: 12/13/2018

Customer: _____

Attention: _____

Submitted by: FAREEDA DUDEKULA



365TTFC6081

Submittal

Data @ 575 V

Motor Load Data

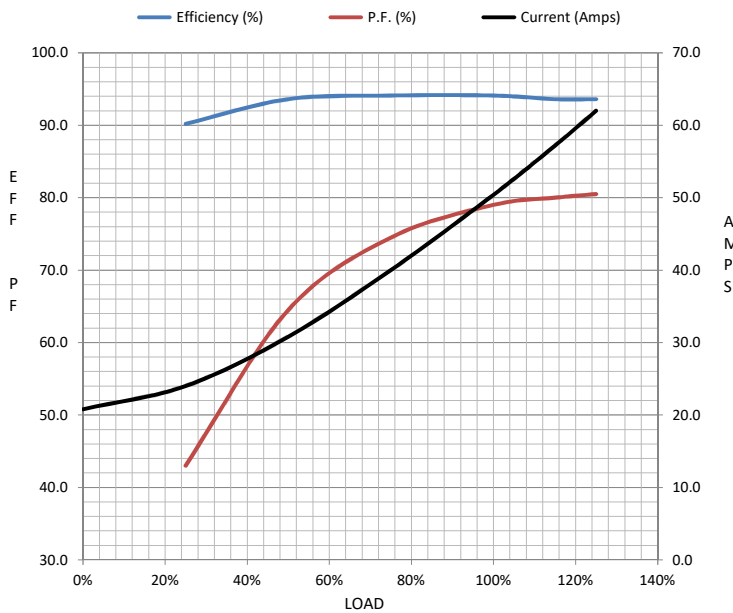
Load	0%	25%	50%	75%	100%	115%	125%	LR	
Current (Amps)	20.8	24.0	30.8	40.0	50.4	57.2	62.0	289	
Torque (ft-lb)	0.00	55.0	110	165	221	254	276	450	
RPM	1200	1198	1196	1192	1190	1,188	1187	0	
Efficiency (%)		90.2	93.6	94.1	94.1	93.6	93.6		
P.F. (%)	4.5	43.0	64.5	74.5	79.0	80.0	80.5	38.0	

Motor Speed Data

	LR	Pull-Up	BD	Rated	Idle
Speed (RPM)	0	600	1150	1190	1200
Current (Amps)	289	260	180	50.4	20.8
Torque (ft-lb)	450	400	590	221	0.00

Information Block

HP	50.0			
Sync. RPM	1200			
Frame	365			
Enclosure	TEFC			
Construction	TFS			
Voltage	575		V	
Frequency	60		Hz	
Design	B			
LR Code letter	G			
Service Factor	1.15			
Temp Rise @ FL	70		° C	
Duty	CONT			
Ambient	40		° C	
Elevation	1,000		feet	
Rotor/Shaft wk²	0.00		Lb-Ft²	
Ref Wdg	T18306021 NONE			
Sound Pressure @ 1M	65		dBA	
VFD Rating	CONSTANT 2:1			
Outline Dwg	SS622180LN			
Conn. Diag	5190.01ME			
Additional Specifications:				
0				
0				
EQUIV CKT (OHMS / PHASE)				
R1	R2	X1	X2	Xm
0.0000	0.0000	0.0000	0.0000	0.0000



Speed -Torque Curve

