

PRODUCT INFORMATION PACKET

Model No: 365TTDS7071

Catalog No: M842

Other Purpose Motor, 75 HP, 3 Ph, 60 Hz, 230/460 V, 1800 RPM, 365HPV Frame, DP

Regal and are trademarks of Regal Rexnord Corporation or one of its affiliated companies.
©2022 Regal Rexnord Corporation, All Rights Reserved. MC017097E

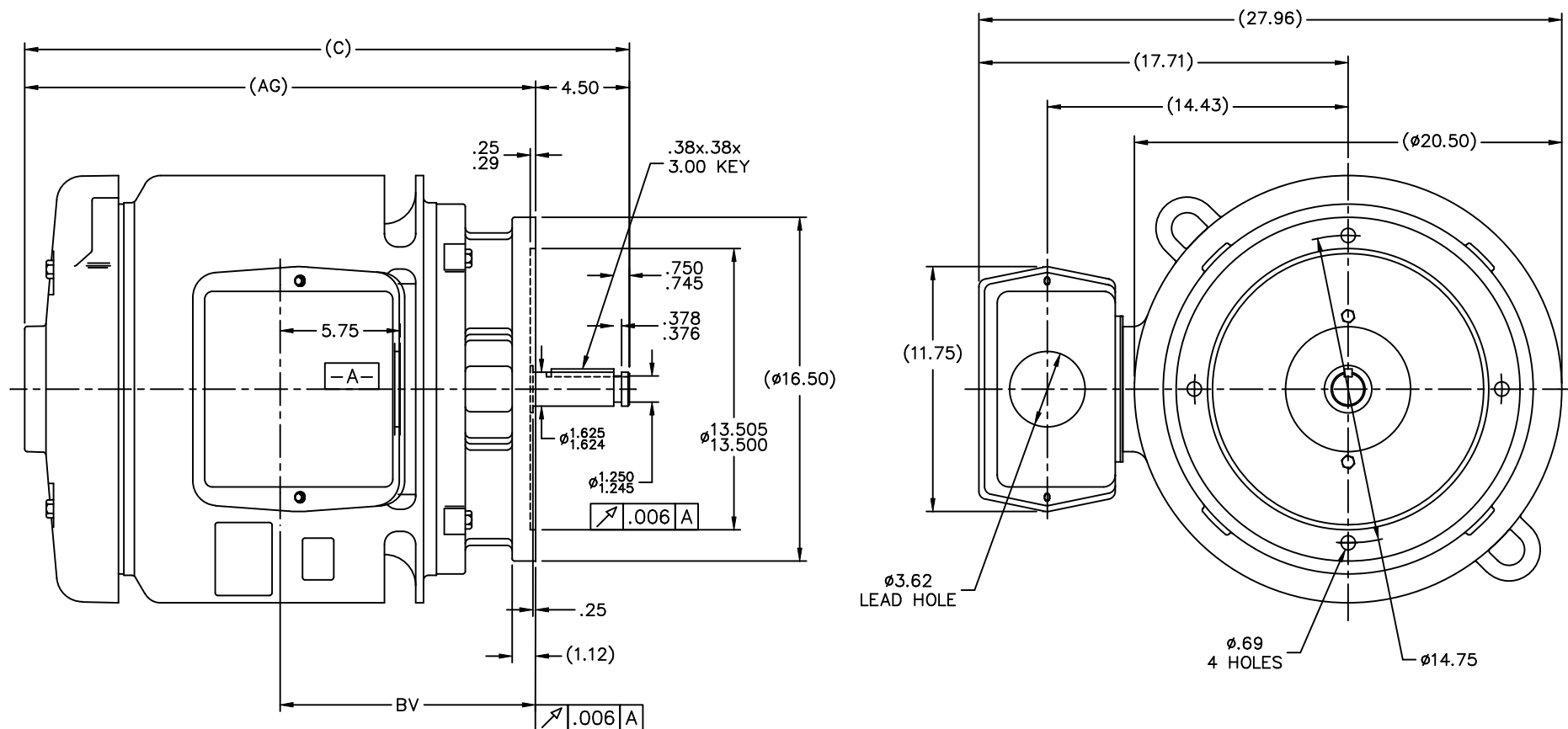


Nameplate Specifications

Output HP	75 Hp	Output KW	56.0 kW
Frequency	60 Hz	Voltage	230/460 V
Current	186.0/93.0 A	Speed	1775 rpm
Service Factor	1.15	Phase	3
Efficiency	91.7 %	Power Factor	82
Duty	Continuous	Insulation Class	B
Design Code	B	KVA Code	F
Frame	365HPV	Enclosure	Drip Proof
Thermal Protection	No Protection	Ambient Temperature	40 °C
Drive End Bearing Size	6312	Opp Drive End Bearing Size	6312
UL	Recognized	CSA	Y
CE	Y	IP Code	12
Number of Speeds	1		


Technical Specifications

Electrical Type	Squirrel Cage Induction Run	Starting Method	Across The Line
Poles	4	Rotation	Reversible
Resistance Main	.14 Ohms	Mounting	Round
Motor Orientation	Shaft Down	Drive End Bearing	Ball
Opp Drive End Bearing	Ball	Frame Material	Cast Iron
Shaft Type	HP	Overall Length	29.00 in
Frame Length	15.00 in	Shaft Diameter	1.625 in
Shaft Extension	4.5 in	Assembly/Box Mounting	F1/F2 CAPABLE
Outline Drawing	B-SS503458-1500	Connection Drawing	A-EE7308K

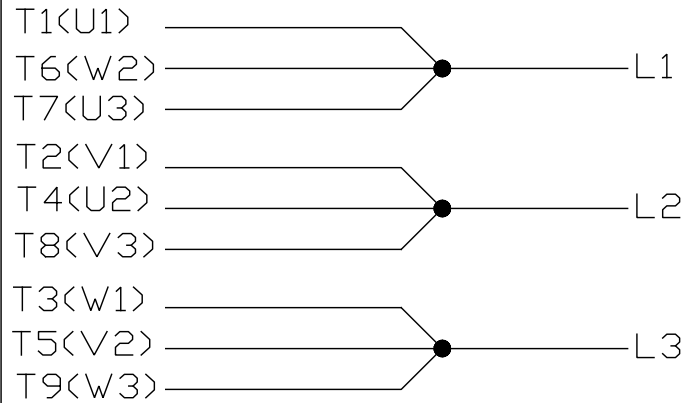
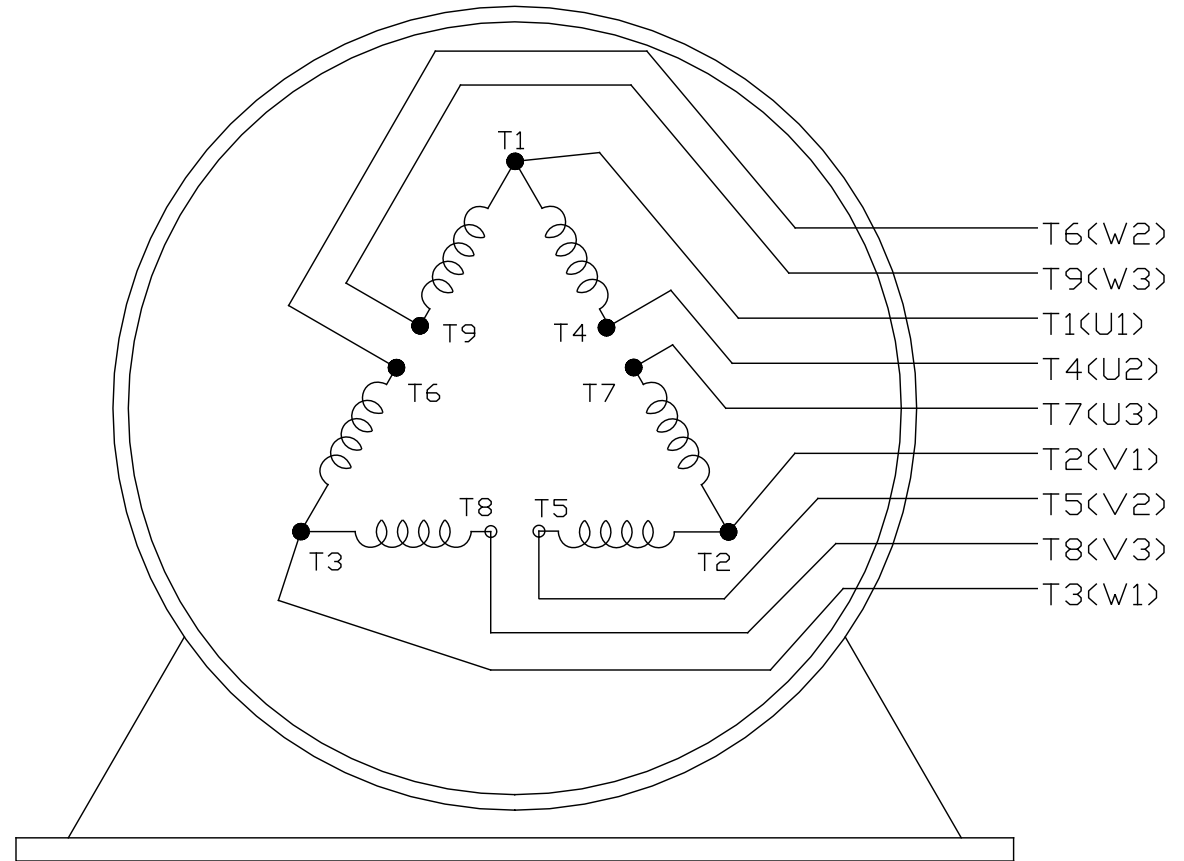
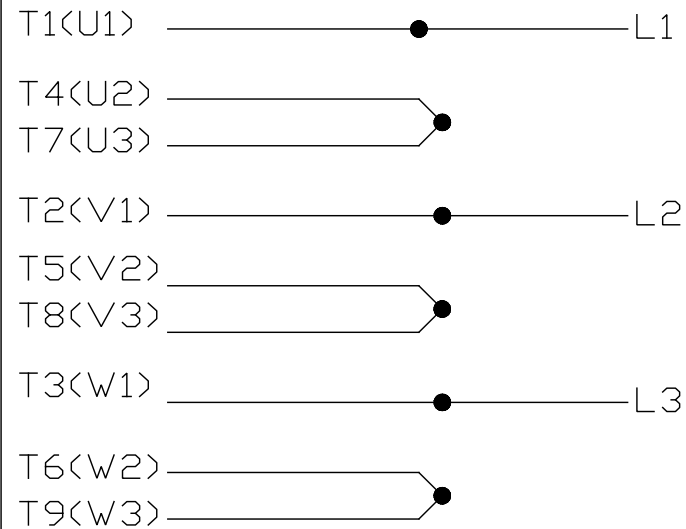


NOTES:


1. CONDUIT BOX CAN BE ROTATED IN 90° STEPS.
2. NAMEPLATES TO BE READ FROM SHAFT EXT. END OF MOTOR.

										TOLERANCES UNLESS SPECIFIED				DRAWN DJK 02-26-1993			
										DEC. INCHES				CHK ML 03-01-1993			
										.X ±.1				APPD TB 03-01-1993			
										.XX ±.03		TITLE OUTLINE 360HP FR. — DR.PR. — P'BASE		SCALE 1=5			
						10 REV. FRONT BRACKET PER CASTING CHANGE CN 29499		NJS 07-24-2001		.XXX ±.005				REF			
						9 REDRAWN ON CADD		DJK 03-01-1993		.XXXX ±.0005		MAT'L		FMF			
						NO. REVISION		BY & DATE		CHK ANG ±7°30"		FINISH		PREV			
						THIS DRAWING IN DESIGN AND DETAIL IS OUR PROPERTY AND MUST NOT BE USED EXCEPT IN CONNECTION WITH OUR WORK ALL RIGHTS OF DESIGN AND INVENTION ARE RESERVED THIS IS AN ELECTRONICALLY GENERATED DOCUMENT — DO NOT SCALE THIS PRINT						RFP		CAD FILE ss503458		SIZE B DRAWING NO. SS503458 PAGE OF 10 REV. 10	
												DIST WA					
DASH	FRAME	C	AG	BV													
1500	360HP	29.00	24.50	12.25													

EE7308K

LOW VOLTAGEHIGH VOLTAGE

VIEW OF TERMINAL END

			TOLERANCES UNLESS SPECIFIED			 REGAL - BELOIT CORPORATION	DRAWN PGK 06-04-1997		
NO.	REVISION	BY & DATE	CHK	ANG	± 7'30"		CHK	ML	06-05-1997
E	CORRECTED IEC MARKINGS ECD-0111208	WGJ 01-23-2017	EMH	DEC.	INCHES	TITLE CONNECTION DIAGRAM DELTA CON. - 3Ø - 9 LEADS	APPD	GK	06-15-1997
D	RE-DRAWN WITH REGAL LOGO ECD-0110493	WGJ 09-30-2016	EMH	.X	± .1				
8	ADDED IEC DESIGNATIONS MU95020	TJW 4/30/2010	MJS	.XX	± .02				
7	REVISED HIGH VOLTAGE L2 WAS L3 CN52600-354	MRB 09-21-1998		.XXX	± .005				
6	REDRAWN ON CADD	PGK 06-05-1997		.XXXX	± .0005				
						MAT'L.			
						FINISH			
THIS DRAWING IN DESIGN AND DETAIL IS OUR PROPERTY AND MUST NOT BE USED EXCEPT IN CONNECTION WITH OUR WORK ALL RIGHTS OF DESIGN AND INVENTION ARE RESERVED THIS IS AN ELECTRONICALLY GENERATED DOCUMENT - DO NOT SCALE THIS PRINT						CAD FILE EE7308K	SIZE	DRAWING NO.	PAGE OF
							A	EE7308K	REV.
									E