

# PRODUCT INFORMATION PACKET

**marathon®**  
Motors

Model No: 365TTDCA4036

Catalog No: E1740

General Purpose Motor, 75 & 60 HP, 3 Ph, 60 & 50 Hz, 230/460 & 190/380 V, 1800 & 1500 RPM,  
365T Frame, DP

Regal and Marathon are trademarks of Regal Rexnord Corporation or one of its affiliated companies.

©2023 Regal Rexnord Corporation, All Rights Reserved. MC017097E

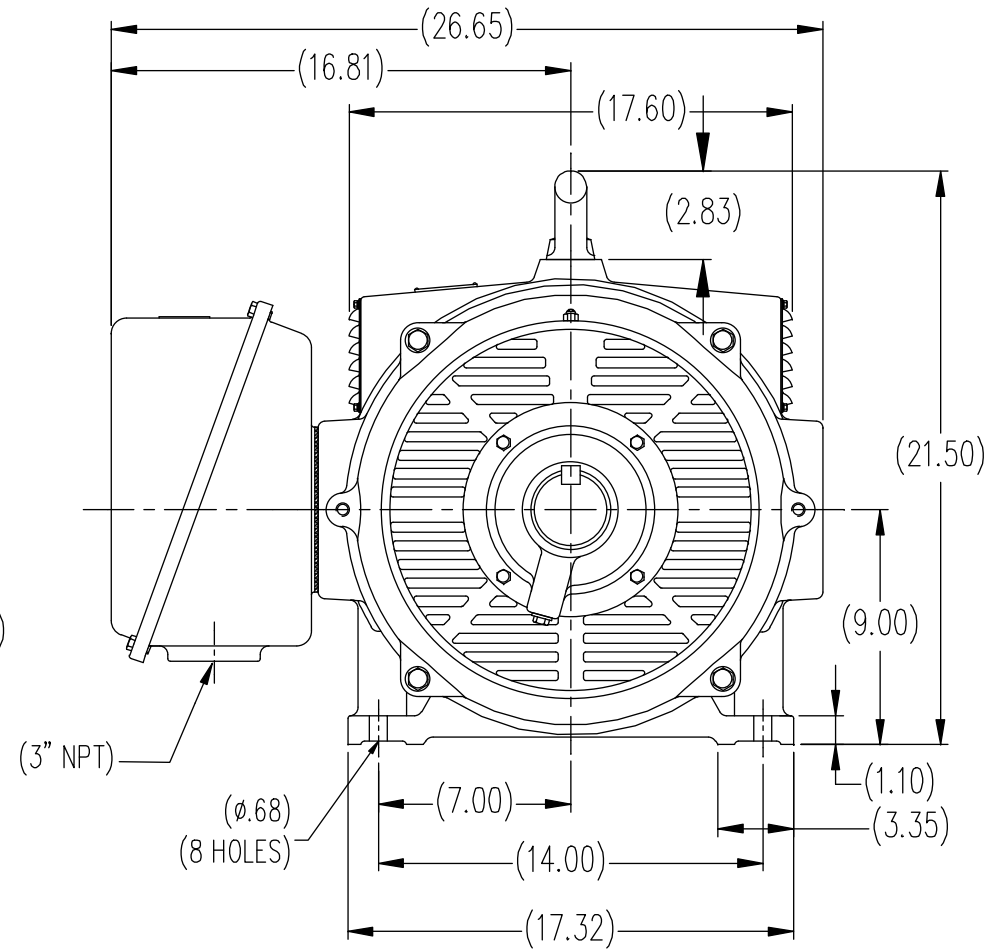
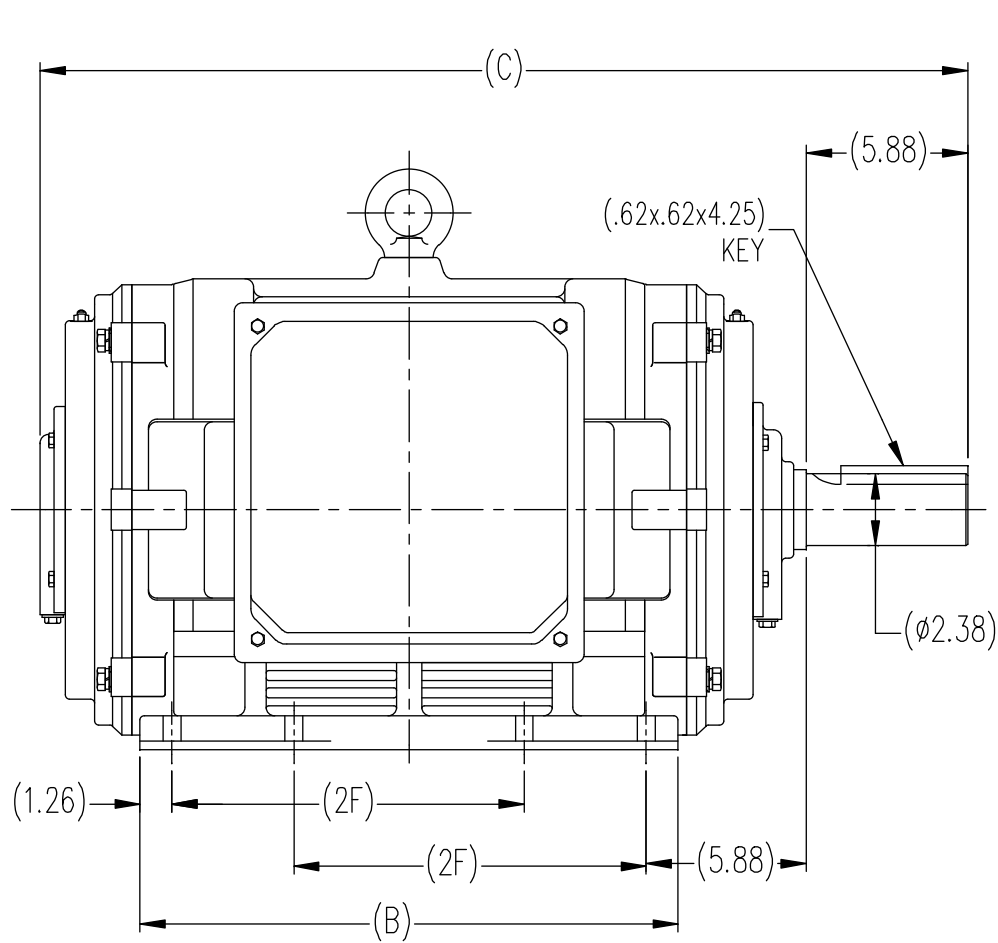
**RegalRexnord**

### Nameplate Specifications

Phase	3	Output HP	75 & 60 Hp
Output KW	56.0 & 45.0 kW	Voltage	230/460 & 190/380 V
Speed	1785 & 1485 rpm	Service Factor	1.15 & 1.15
Frame	365T	Enclosure	Drip Proof
Thermal Protection	No Protection	Efficiency	95 & 95 %
Ambient Temperature	40 °C	Frequency	60 & 50 Hz
Current	174/87 & 169/84.5 A	Power Factor	85
Duty	Continuous	Insulation Class	B
Design Code	B	KVA Code	G
Drive End Bearing Size	6314	Opp Drive End Bearing Size	6313
UL	Recognized	CSA	Y
CE	Y	IP Code	12
Number of Speeds	1		

### Technical Specifications

Electrical Type	Squirrel Cage Induction Run	Starting Method	Across The Line
Poles	4	Rotation	Reversible
Resistance Main	.07009 Ohms	Mounting	Rigid Base
Motor Orientation	Horizontal	Drive End Bearing	Ball
Opp Drive End Bearing	Ball	Frame Material	Cast Iron
Shaft Type	T	Overall Length	31.69 in
Shaft Diameter	2.375 in	Shaft Extension	5.87 in
Assembly/Box Mounting	F1/F2 CAPABLE		
Connection Drawing	A-EE7308K	Outline Drawing	SS620114-365T



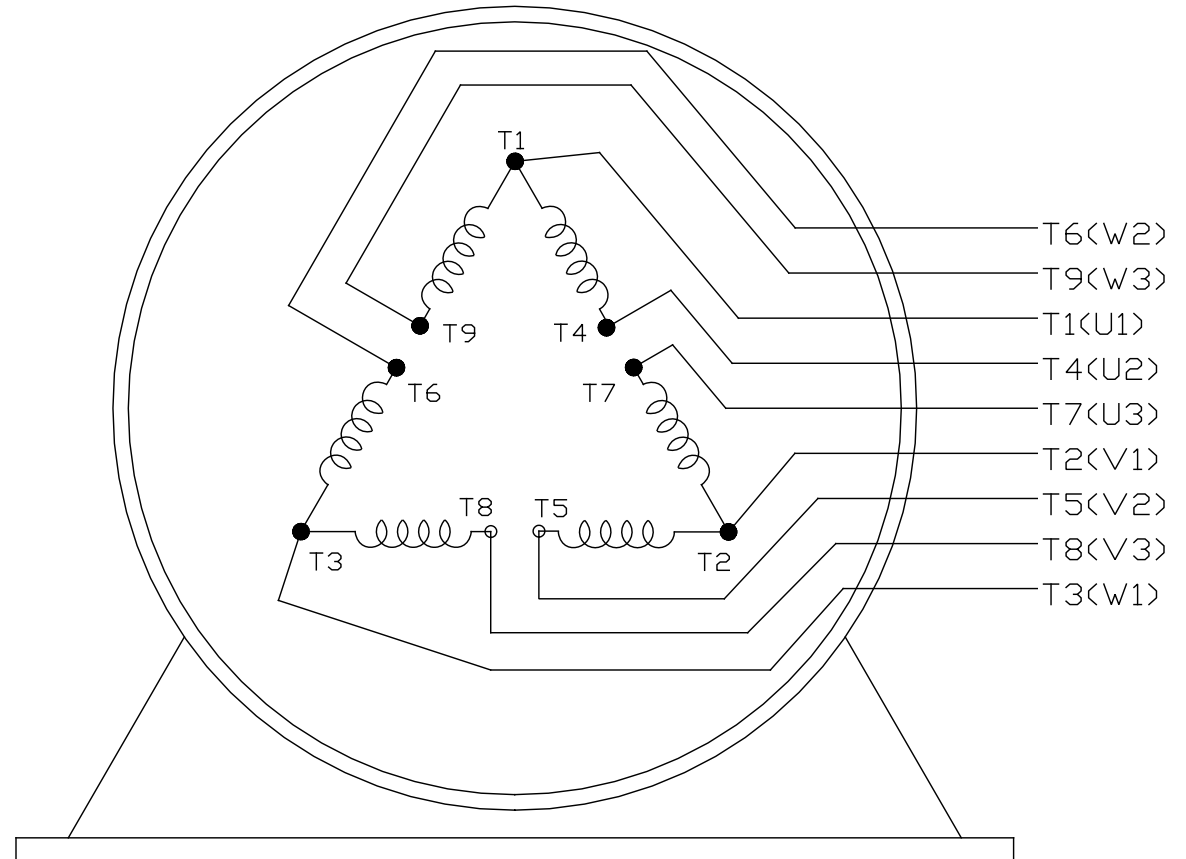
(DIMENSIONS IN TABLE ARE CONSIDERED REFERENCE)

(MAY NOT BE DRAWN TO SCALE)

364T	31.69	17.32	11.25
365T	33.27	18.90	12.25
FRAME	C	B	2F

				TOLERANCES UNLESS SPECIFIED		<div> <div>REGAL</div> <div>REGAL-BELOIT CORPORATION</div> </div>	DRAWN MSG 11-09-2007	
				DEC.	INCHES		CHK	ML 11-09-2008
				.X	±.1	TITLE 364/365T FR. - ODP - CAST IRON	APPD	SB 01-14-2008
				.XX	±.03		SCALE	1=1
				.XXX	±.005		REF	
1	REMOVED REFERENCE TO MODEL NUMBERS	ML 02-02-2011		.XXXX	±.0005	MAT'L.	FMF	HUADA
NO.	REVISION	BY & DATE	CHK	ANG	FINISH		PREV	
THIS DRAWING IN DESIGN AND DETAIL IS OUR PROPERTY AND MUST NOT BE USED EXCEPT IN CONNECTION WITH OUR WORK ALL RIGHTS OF DESIGN AND INVENTION ARE RESERVED THIS IS AN ELECTRONICALLY GENERATED DOCUMENT - DO NOT SCALE THIS PRINT			RFP		CAD FILE	SS620114	SIZE	DRAWING NO.
			DIST				B	SS620114
								REV.

EE7308K

LOW VOLTAGEHIGH VOLTAGE

VIEW OF TERMINAL END

			TOLERANCES UNLESS SPECIFIED			 <b>REGAL - BELOIT CORPORATION</b>	DRAWN PGK 06-04-1997		
NO.	REVISION	BY & DATE	CHK	ANG	± 7'30"		CHK	ML	06-05-1997
E	CORRECTED IEC MARKINGS ECD-0111208	WGJ 01-23-2017	EMH	DEC.	INCHES	<b>TITLE</b> CONNECTION DIAGRAM DELTA CON. - 3Ø - 9 LEADS	APPD	GK	06-15-1997
D	RE-DRAWN WITH REGAL LOGO ECD-0110493	WGJ 09-30-2016	EMH	.X	± .1				
8	ADDED IEC DESIGNATIONS MU95020	TJW 4/30/2010	MJS	.XX	± .02				
7	REVISED HIGH VOLTAGE L2 WAS L3 CN52600-354	MRB 09-21-1998		.XXX	± .005				
6	REDRAWN ON CADD	PGK 06-05-1997		.XXXX	± .0005				
						<b>MAT'L.</b>			
						<b>FINISH</b>			
THIS DRAWING IN DESIGN AND DETAIL IS OUR PROPERTY AND MUST NOT BE USED EXCEPT IN CONNECTION WITH OUR WORK ALL RIGHTS OF DESIGN AND INVENTION ARE RESERVED THIS IS AN ELECTRONICALLY GENERATED DOCUMENT - DO NOT SCALE THIS PRINT						CAD FILE EE7308K	SIZE	DRAWING NO.	PAGE OF
							A	EE7308K	REV.
									E