

PRODUCT INFORMATION PACKET



Model No: 365TSTGS4001

Catalog No: U071

Explosion Proof Motor, 75 & 60 HP, 3 Ph, 60 & 50 Hz, 230/460 & 190/380 V, 3600 & 3000 RPM,
365TS Frame, EPFC

Regal and Marathon are trademarks of Regal Rexnord Corporation or one of its affiliated companies.

©2023 Regal Rexnord Corporation, All Rights Reserved. MC017097E

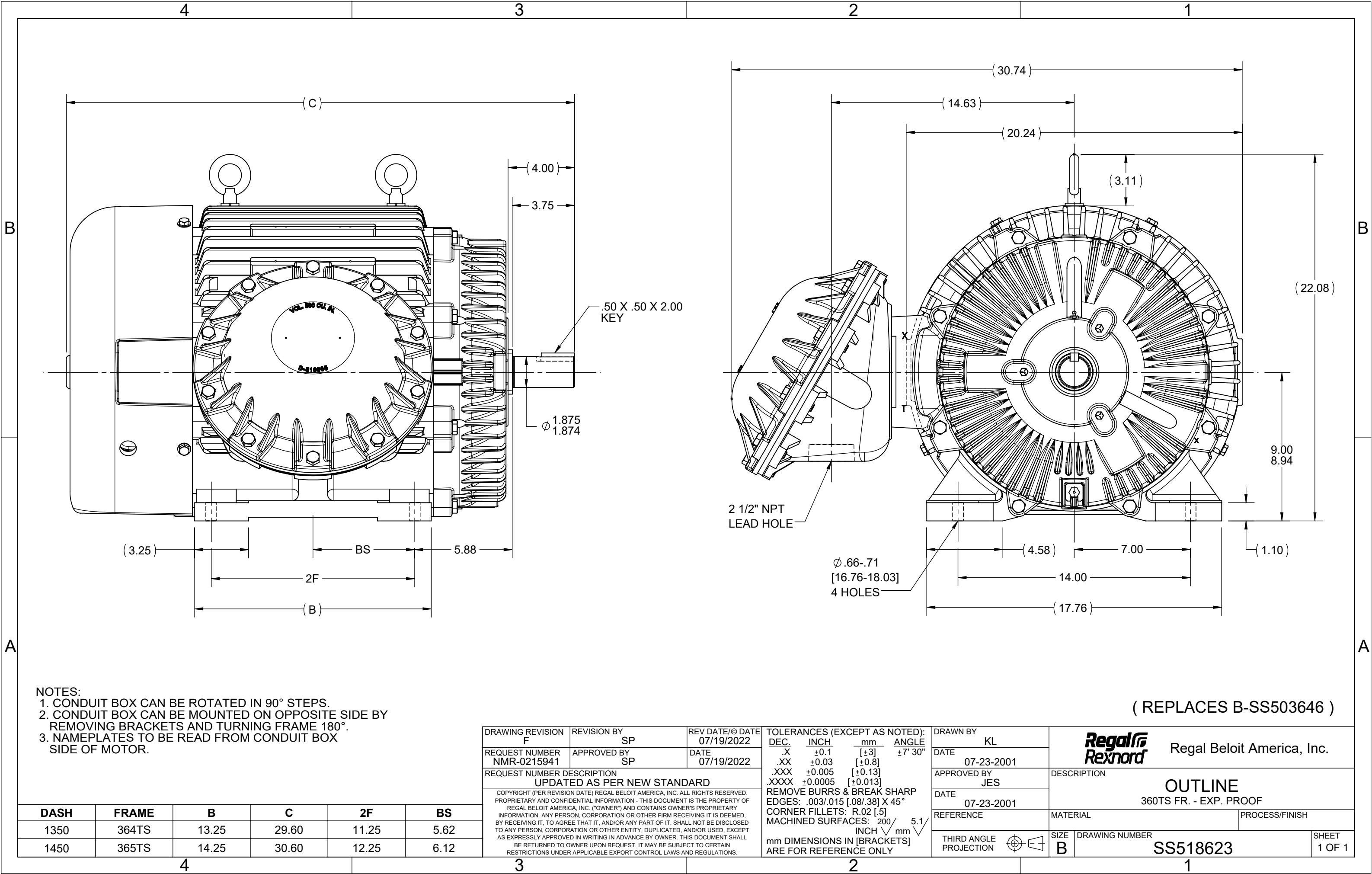


Nameplate Specifications

Phase	3	Output HP	75 & 60 Hp
Output KW	56.0 & 45.0 kW	Voltage	230/460 & 190/380 V
Speed	3555 & 2955 rpm	Service Factor	1.15 & 1.15
Frame	365TS	Enclosure	Explosion Proof Fan cooled
Thermal Protection	Thermostat	Efficiency	93 & 93 %
Ambient Temperature	40 °C	Frequency	60 & 50 Hz
Current	171/85.5 & 166/83 A	Power Factor	87.5
Duty	Continuous	Insulation Class	F
Design Code	B	KVA Code	G
Drive End Bearing Size	6312	Opp Drive End Bearing Size	6312
UL	UL Listed And CSA Certified	CSA	Y
CE	N	IP Code	54
Number of Speeds	1	Hazardous Location	EXP PROOF CL I GR C&D CL II GR F&G T3B

Technical Specifications

Electrical Type	Squirrel Cage Inverter Rated	Starting Method	Line Or Inverter
Poles	2	Rotation	Reversible
Resistance Main	.072 Ohms	Mounting	Rigid Base
Motor Orientation	Horizontal	Drive End Bearing	Ball
Opp Drive End Bearing	Ball	Frame Material	Cast Iron
Shaft Type	TS	Overall Length	30.38 in
Frame Length	14.50 in	Shaft Diameter	1.875 in
Shaft Extension	4 in	Assembly/Box Mounting	F1 ONLY
Outline Drawing	B-SS518623-1450	Connection Drawing	A-EE7308AD



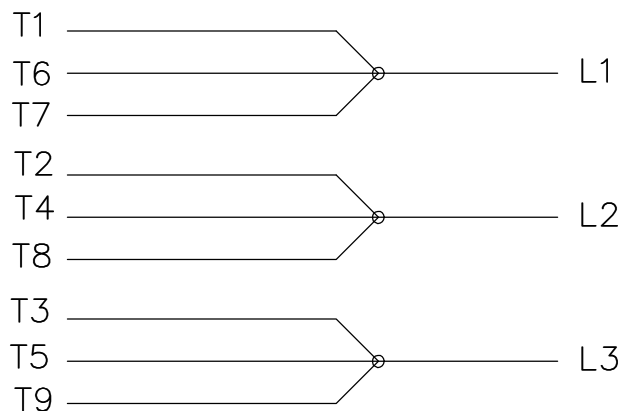
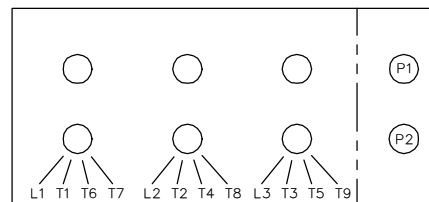
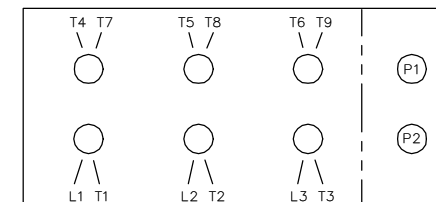
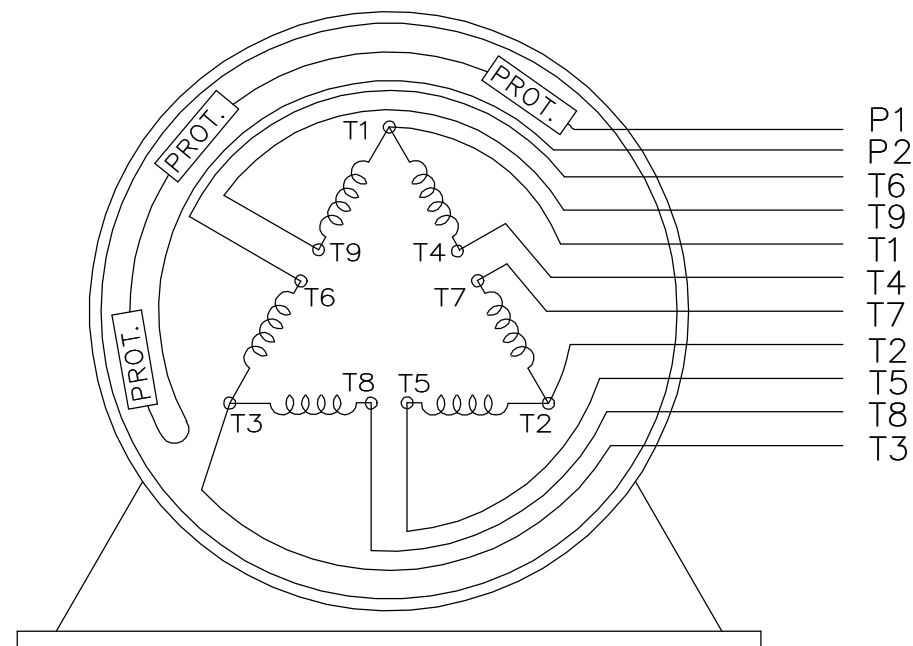
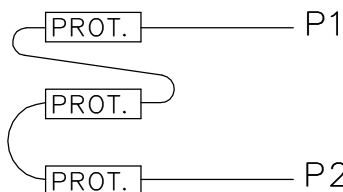
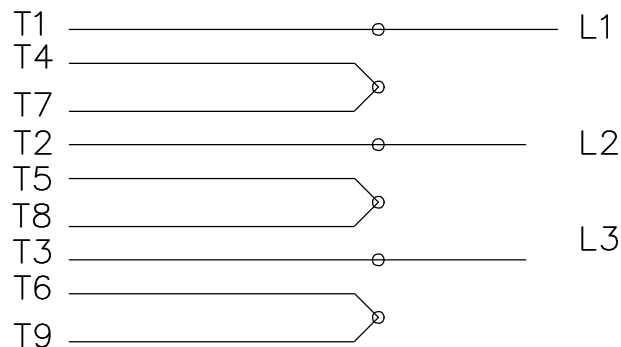
(REPLACES B-SS503646)





Regal Beloit America, Inc.

OUTLINE
360TS FR. - EXP. PROOF

SS518623

LOW VOLTAGELOW VOLTAGEHIGH VOLTAGEHIGH VOLTAGEVIEW OF TERMINAL END

WHEN MORE THAN ONE PROT. IS USED; PROT. ARE CONNECTED IN SERIES

DRAWING REVISION L	REVISION BY JP	REV DATE/© DATE 06-21-2019	TOLERANCES (EXCEPT AS NOTED):				DRAWN BY MJD		<div> Regal Beloit America, Inc.</div>		
ECO ECO-0168744	APPROVED BY MH	DATE 06-21-2019	DEC.	INCH	mm	ANGLE	DATE 12-19-1997				
ECO DESCRIPTION UPDATED TO CURRENT STANDARDS			.X	±0.1	[±3]	±7° 30"	APPROVED BY GK	DESCRIPTION CONN DIAGRAM-EXTERNAL			
COPYRIGHT (PER REVISION DATE) REGAL BELOIT AMERICA, INC. ALL RIGHTS RESERVED. PROPRIETARY AND CONFIDENTIAL INFORMATION - THIS DOCUMENT IS THE PROPERTY OF REGAL BELOIT AMERICA, INC. ("OWNER") AND CONTAINS OWNER'S PROPRIETARY INFORMATION. ANY PERSON, CORPORATION OR OTHER FIRM RECEIVING IT IS DEEMED, BY RECEIVING IT, TO AGREE THAT IT, AND/OR ANY PART OF IT, SHALL NOT BE DISCLOSED TO ANY PERSON, CORPORATION OR OTHER ENTITY, DUPLICATED, AND/OR USED, EXCEPT AS EXPRESSLY APPROVED IN WRITING IN ADVANCE BY OWNER. THIS DOCUMENT SHALL BE RETURNED TO OWNER UPON REQUEST. IT MAY BE SUBJECT TO CERTAIN RESTRICTIONS UNDER APPLICABLE EXPORT CONTROL LAWS AND REGULATIONS.			.XXX	±0.005	[±0.13]		DATE 01-07-1998				
			.XXXX	±0.0005	[±0.013]		REFERENCE	MATERIAL	PROCESS/FINISH		
			REMOVE BURRS & BREAK SHARP EDGES: .003/.015 [.08/.38] X 45°				5.1 INCH ✓ mm ✓	THIRD ANGLE PROJECTION 	SIZE A	DRAWING NUMBER EE7308AD	SHEET 1 OF 1
			CORNER FILLETS: R.02 [.5]								
			MACHINED SURFACES: 200								
			mm DIMENSIONS IN [BRACKETS] ARE FOR REFERENCE ONLY								