

# PRODUCT INFORMATION PACKET

**marathon®**  
Motors

Model No: 365TSTDS4001

Catalog No: E753

Other Purpose Motor, 100 & 75 HP, 3 Ph, 60 & 50 Hz, 230/460 & 190/380 V, 3600 & 3000 RPM,  
365TS Frame, DP



Regal and Marathon are trademarks of Regal Rexnord Corporation or one of its affiliated companies.

©2023 Regal Rexnord Corporation, All Rights Reserved. MC017097E

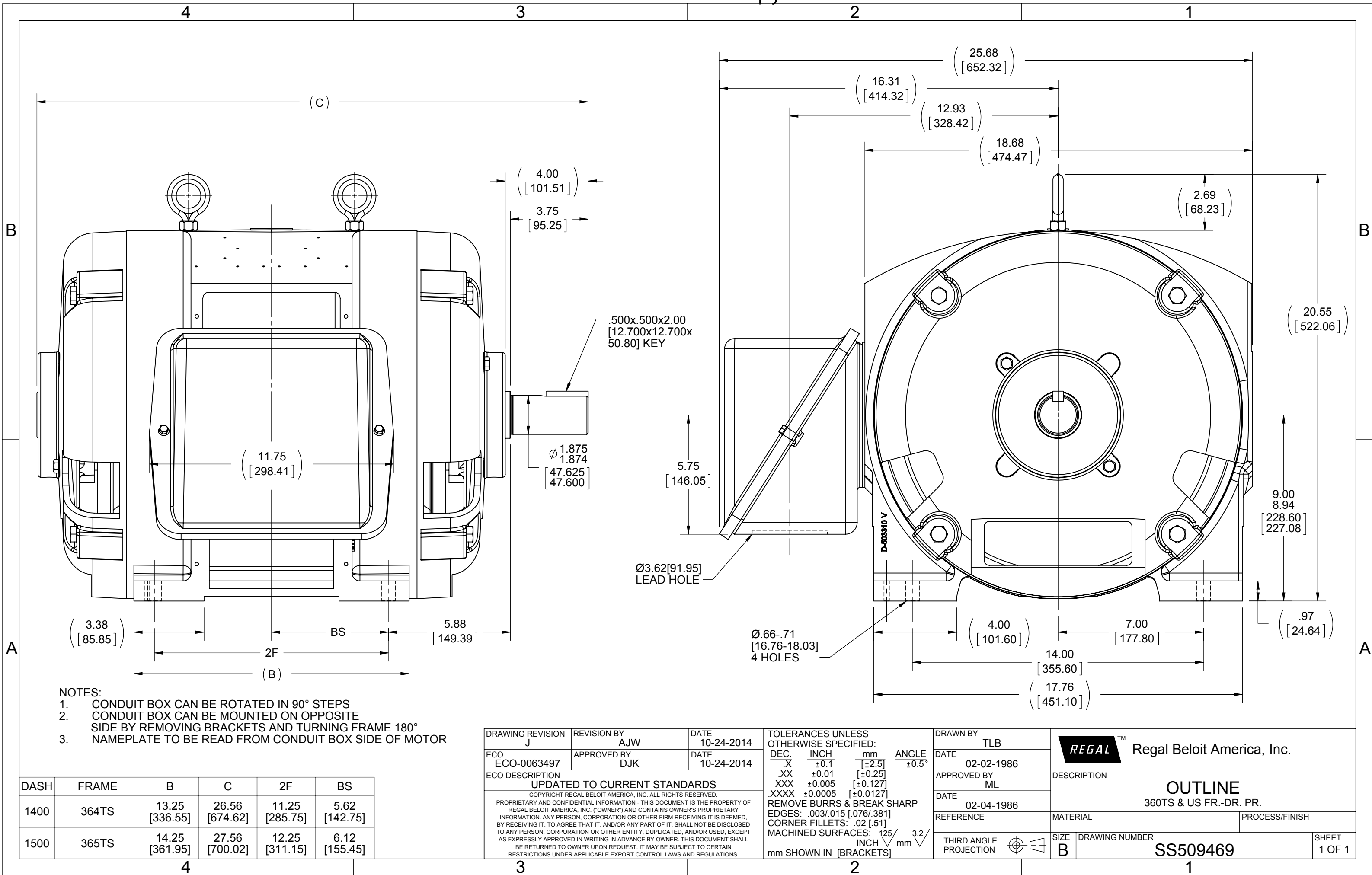
**RegalRexnord**

### Nameplate Specifications

Phase	3	Output HP	100 & 75 Hp
Output KW	75.0 & 56.0 kW	Voltage	230/460 & 190/380 V
Speed	3550 & 2960 rpm	Service Factor	1.15 & 1.15
Frame	365TS	Enclosure	Drip Proof
Thermal Protection	No Protection	Efficiency	93 & 91.7 %
Ambient Temperature	40 °C	Frequency	60 & 50 Hz
Current	240/120 & 216/108 A	Power Factor	83.5
Duty	Continuous	Insulation Class	B
Design Code	B	KVA Code	F
Drive End Bearing Size	6312	Opp Drive End Bearing Size	6312
UL	Recognized	CSA	Y
CE	Y	IP Code	12
Number of Speeds	1		

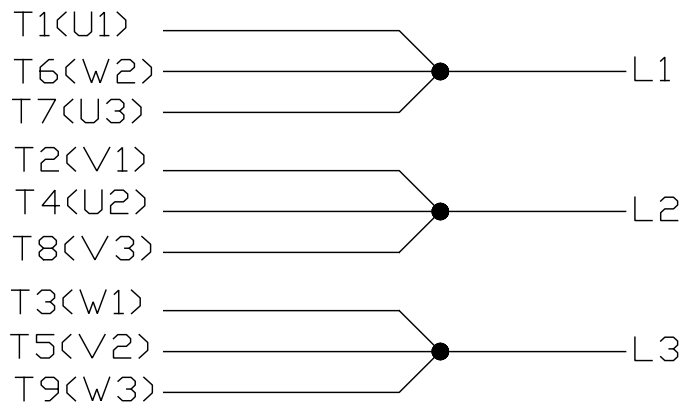
### Technical Specifications

Electrical Type	Squirrel Cage Induction Run	Starting Method	Across The Line
Poles	2	Rotation	Reversible
Resistance Main	.064 Ohms	Mounting	Rigid Base
Motor Orientation	Horizontal	Drive End Bearing	Ball
Opp Drive End Bearing	Ball	Frame Material	Cast Iron
Shaft Type	TS	Overall Length	27.50 in
Frame Length	15.00 in	Shaft Diameter	1.880 in
Shaft Extension	4 in	Assembly/Box Mounting	F1/F2 CAPABLE
Connection Drawing	A-EE7308K	Outline Drawing	B-SS509469-1500

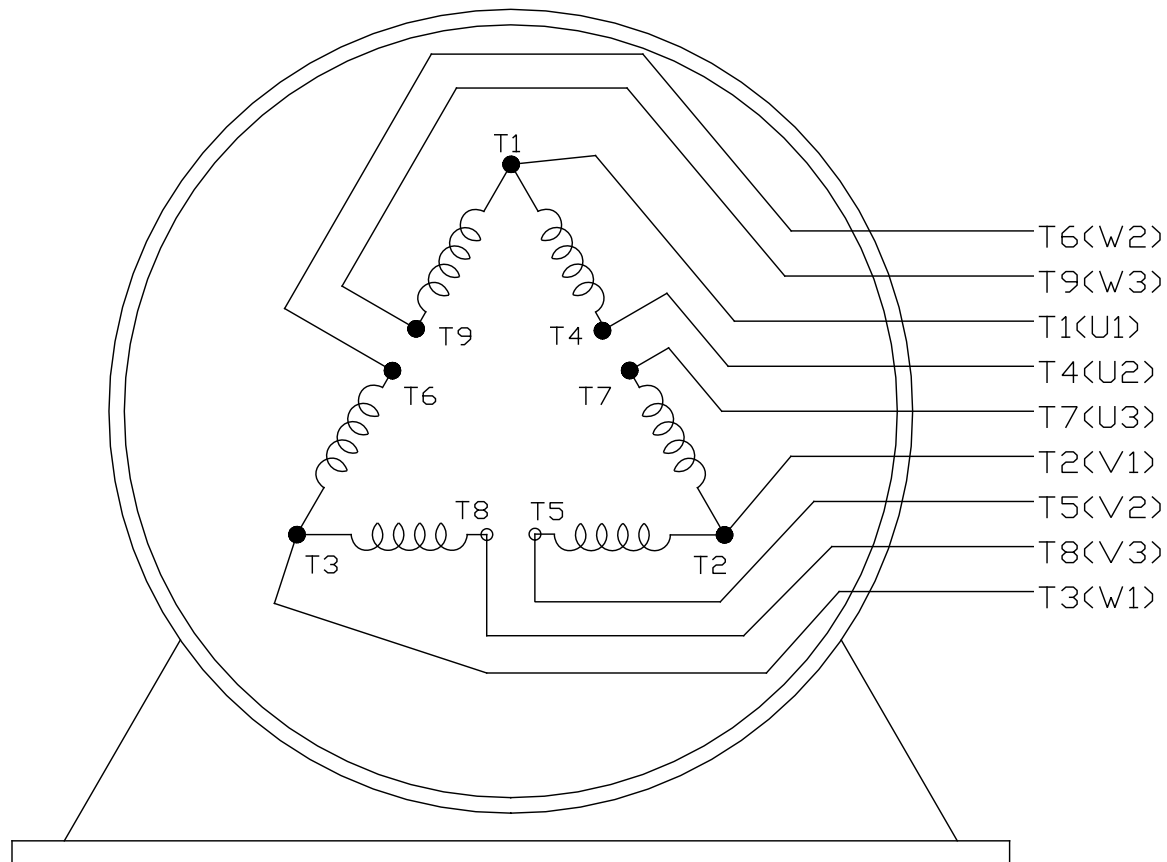
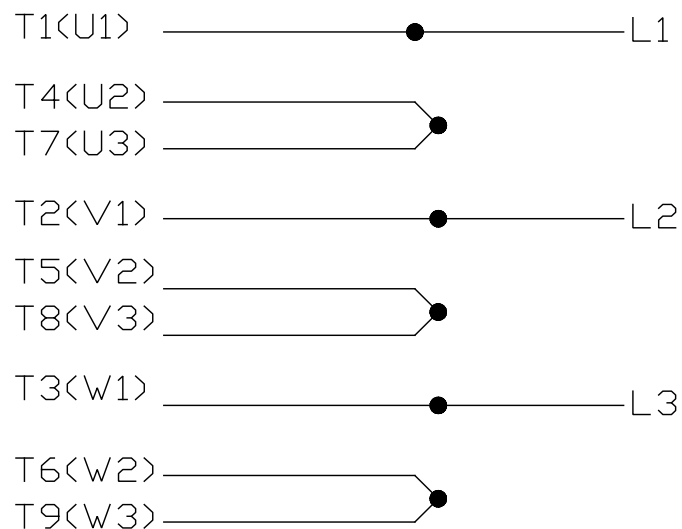


LOW VOLTAGE


EE7308K



## HIGH VOLTAGE



VIEW OF TERMINAL END

			TOLERANCES UNLESS SPECIFIED			 REGAL - BELOIT CORPORATION		DRAWN PGK 06-04-1997			
E	CORRECTED IEC MARKINGS	ECO-0111208	WGJ 01-23-2017	EMH	DEC.			INCHES	CHK	ML	06-05-1997
D	RE-DRAWN WITH REGAL LOGO	ECO-0110493	WGJ 09-30-2016	EMH	.X	±.1	TITLE CONNECTION DIAGRAM DELTA CON. - 3Ø - 9 LEADS		APPD	GK	06-15-1997
8	ADDED IEC DESIGNATIONS	MU95020	TJW 4/30/2010	MJS	.XX	±.02			SCALE		
7	REVISD HIGH VOLTAGE L2 WAS L3	CN52600-354	MRB 09-21-1998		.XXX	±.005	MAT'L. FINISH		REF		
6	REDRAWN ON CADD	PGK 06-05-1997		.XXXX	±.0005	FMF					
NO.	REVISION	BY & DATE	CHK	ANG	± 7'30"				PREV		
THIS DRAWING IN DESIGN AND DETAIL IS OUR PROPERTY AND MUST NOT BE USED EXCEPT IN CONNECTION WITH OUR WORK ALL RIGHTS OF DESIGN AND INVENTION ARE RESERVED THIS IS AN ELECTRONICALLY GENERATED DOCUMENT - DO NOT SCALE THIS PRINT			RFP			CAD FILE EE7308K		SIZE A	DRAWING NO. PAGE OF EE7308K	REV. E	
			DIST								

## CERTIFICATION DATA SHEET

Model#: 365TSTD4001 BP  
 CONN. DIAGRAM: A-EE7308K  
 OUTLINE: B-SS509469-1500

WINDING#: T365256 NONE 1  
 ASSEMBLY: F1/F2 CAPABLE

## TYPICAL MOTOR PERFORMANCE DATA

HP	KW	SYNC. RPM	F.L. RPM	FRAME	ENCLOSURE	KVA CODE	DESIGN
100&75	75&56	3600	3550&2960	365TS	DP	F	B

PH	Hz	VOLTS	FL AMPS	START TYPE	DUTY	INSL	S.F	AMB°C	ELEVATION
3	60/50	230/460#190/ 380	240/120&216/ 108	ACROSS THE LINE	CONTINUOU S	B1	1.15/1.15	40	3300

FULL LOAD EFF: 93&91.7	3/4 LOAD EFF: 93	1/2 LOAD EFF: 92.4	GTD. EFF	ELEC. TYPE	NO LOAD AMPS
FULL LOAD PF: 83.5&84	3/4 LOAD PF: 82	1/2 LOAD PF: 77	91.7	SQ CAGE IND RUN	68 / 34

F.L. TORQUE	LOCKED ROTOR AMPS	L.R. TORQUE	B.D. TORQUE	F.L. RISE°C
148 LB-FT	1220 / 610	215 LB-FT 145	315 LB-FT 213	55

SOUND PRESSURE @ 3 FT.	SOUND POWER	ROTOR WK^2	MAX. WK^2	SAFE STALL TIME	STARTS /HOUR	APPROX. MOTOR WGT
80 dBA	90 dBA	6.9 LB-FT^2	58 LB-FT^2	12 SEC.	2	725 LBS.

## \*\*\* SUPPLEMENTAL INFORMATION \*\*\*

DE BRACKET TYPE	ODE BRACKET TYPE	MOUNT TYPE	ORIENTATION	SEVERE DUTY	HAZARDOUS LOCATION	DRIP COVER	SCREENS	PAINT
STANDARD	STANDARD	RIGID	HORIZONTAL	FALSE	NONE	FALSE	NONE	BLUE (ENAMEL)

BEARINGS		GREASE	SHAFT TYPE	SPECIAL DE	SPECIAL ODE	SHAFT MATERIAL	FRAME MATERIAL
DE	OPE						
BALL	BALL	POLYREX EM	TS	NONE	NONE	1045 HOT ROLLED (C-204)	CAST IRON
6312	6312						

THERMO-PROTECTORS				THERMISTORS	CONTROL	SPACE /n HEATERS
THERMOSTATS	PROTECTORS	WDG RTDs	BRG RTDs			
NONE	NOT	NONE	NONE	NONE	FALSE	NONE VOLTS

If Inverter equals NONE, contact factory for further information

\*  
N  
O  
T  
E  
S  
\*

INVERTER TORQUE: NONE
INV. HP SPEED RANGE: NONE
ENCODER: NONE
NONE NONE
NONE NONE PPR
BRAKE: NONE NONE
NONE P/N NONE
NONE NONE
- FT-LB NONE V NONE Hz

DATE: 06/21/2017 08:52:08 AM  
 FORM 3531 REV.3 02/07/99  
 \*\* Subject to change without notice.

## Data Sheet

Date: 12/13/2018

Customer: \_\_\_\_\_

Attention: \_\_\_\_\_

Submitted by: FAREEDA DUDEKULA



365TSTD4001

Submittal

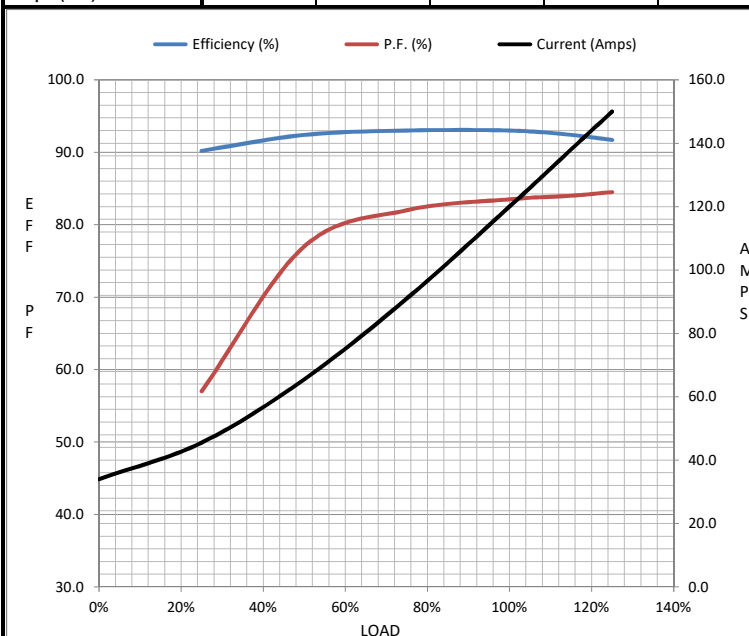
Data @ 460 V

## Motor Load Data

Load	0%	25%	50%	75%	100%	115%	125%	LR	
Current (Amps)	34.0	45.5	65.5	91.0	120	138	150	610	
Torque (ft-lb)	0.00	36.5	73.5	110	148	170	185	215	
RPM	3600	3588	3575	3565	3550	3,540	3530	0	
Efficiency (%)		90.2	92.4	93.0	93.0	92.4	91.7		
P.F. (%)	8.0	57.0	77.0	82.0	83.5	84.0	84.5	32.0	

## Motor Speed Data

	LR	Pull-Up	BD	Rated	Idle	Information Block	
Speed (RPM)	0	1800	3425	3550	3600	HP	100.0
Current (Amps)	610	525	375	120	34.0	Sync. RPM	3600
Torque (ft-lb)	215	185	315	148	0.00	Frame	365



Frame	365			
Enclosure	DP			
Construction	TDS			
Voltage	230/460#190/380	V		
Frequency	60	Hz		
Design	B			
LR Code letter	F			
Service Factor	1.15			
Temp Rise @ FL	55	° C		
Duty	CONT			
Ambient	40	° C		
Elevation	1,000	feet		
Rotor/Shaft wk²	6.9	Lb-Ft²		
Ref Wdg	T365256 NONE			
Sound Pressure @ 1M	80	dBA		
VFD Rating	NONE			
Outline Dwg	B-SS509469-1500			
Conn. Diag	A-EE7308K			
Additional Specifications:				
0				
0				
EQUIV CKT (OHMS / PHASE)				
R1	R2	X1	X2	Xm
0.0430	0.0320	0.2770	0.2980	8.7760

## Speed -Torque Curve

