

PRODUCT INFORMATION PACKET



Model No: 365TSTDS17101
Catalog No: 365TSTDS17101
40,900,DP,365TS,3/60/230/460

Regal and Marathon are trademarks of Regal Rexnord Corporation or one of its affiliated companies.
©2024 Regal Rexnord Corporation, All Rights Reserved. MC017097E



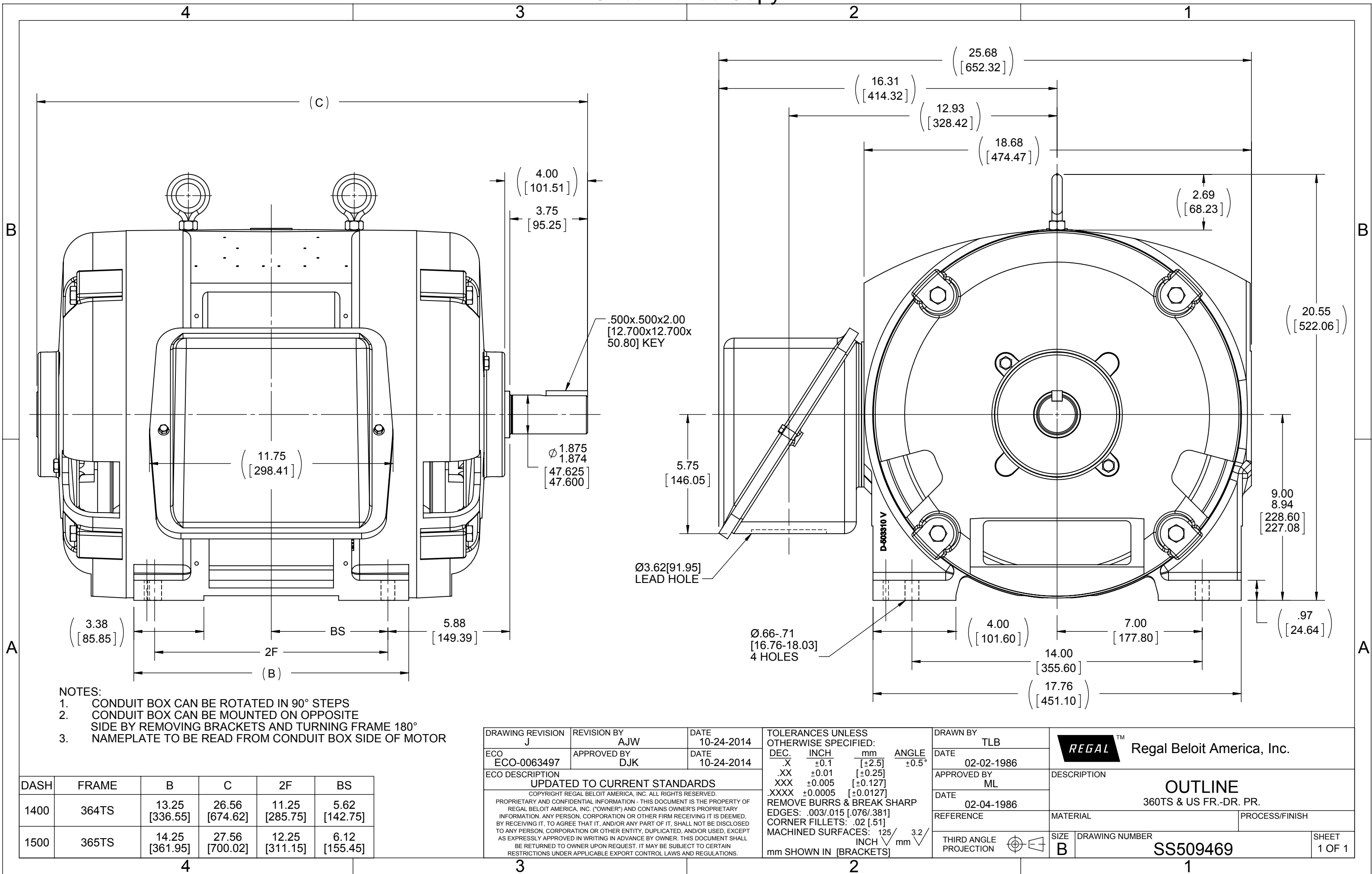
Nameplate Specifications

| | | | |
|------------------------|---------------|----------------------------|------------|
| Phase | 3 | Output HP | 40 Hp |
| Output KW | 29.8 kW | Voltage | 230/460 V |
| Speed | 880 rpm | Service Factor | 1.15 |
| Frame | 365TS | Enclosure | Drip Proof |
| Thermal Protection | No Protection | Efficiency | 90.2 % |
| Ambient Temperature | 40 °C | Frequency | 60 Hz |
| Current | 116.0/58.0 A | Power Factor | 72.5 |
| Duty | Continuous | Insulation Class | B |
| Design Code | B | KVA Code | F |
| Drive End Bearing Size | 312 | Opp Drive End Bearing Size | 312 |
| UL | Recognized | CSA | Y |
| CE | Y | IP Code | 12 |
| Number of Speeds | 1 | | |

Technical Specifications

| | | | |
|-----------------------|-----------------------------|-----------------------|-----------------|
| Electrical Type | Squirrel Cage Induction Run | Starting Method | Across The Line |
| Poles | 8 | Rotation | Reversible |
| Resistance Main | .328 Ohms | Mounting | Rigid Base |
| Motor Orientation | Horizontal | Drive End Bearing | Ball |
| Opp Drive End Bearing | Ball | Frame Material | Cast Iron |
| Shaft Type | TS | Assembly/Box Mounting | F1/F2 CAPABLE |
| Outline Drawing | B-SS509469-1500 | Connection Drawing | A-EE7308 |

This is an uncontrolled document once printed or downloaded and is subject to change without notice. Date Created:04/24/2024





| NO. | REVISION | BY & DATE | CHK | ANG | TOLERANCES UNLESS SPECIFIED | FINISH | DRAWN RM | ML | SAS | SCALE | REF | FMF | PREV |
|--|--|----------------|-----|-------|--------------------------------|---------|-----------------|--------|--------------------|---------|--------|-----|------|
| | | | | | | | | | | | | | |
| 5 | CHG TO REGAL LOGO | SL 09/10/2015 | AB | DEC. | INCHES | | | | | | | | |
| 4 | REVISED IEC NOTATIONS | MSG 11/15/2011 | CMN | .X | ±.1 | | | | | | | | |
| 3 | ADDED IEC NOTATIONS... (U1), (V1) ETC. MU95194 | MSG 5/10/2010 | MJS | .XX | ±.02 | | | | | | | | |
| 2 | ADDED THE OPTIONAL CORD CONNECTION MU46318 | RDH 04/24/2003 | DRS | .XXX | ±.005 | | | | | | | | |
| 1 | REDRAWN | RM 11/20/1990 | | .XXXX | ±.0005 | | | | | | | | |
| | | | | | ±7'30" | | | | | | | | |
| THIS DRAWING IN DESIGN AND DETAIL IS OUR PROPERTY AND MUST NOT BE USED EXCEPT IN CONNECTION WITH OUR WORK ALL RIGHTS OF DESIGN AND INVENTION ARE RESERVED THIS IS AN ELECTRONICALLY GENERATED DOCUMENT - DO NOT SCALE THIS PRINT | | | | | | RFP | CAD FILE ee7308 | SIZE A | DRAWING NO. EE7308 | PAGE OF | REV. 5 | | |
| | | | | | | DIST WP | | | | | | | |

