

PRODUCT INFORMATION PACKET

marathon®
Motors

Model No: 365TSTDS16042

Catalog No: E768C

XRI® General Purpose General Purpose Motor, 60 & 50 HP, 3 Ph, 60 & 50 Hz, 230/460 & 190/380 V,
1800 & 1500 RPM, 365TS Frame, DP



Regal and Marathon are trademarks of Regal Rexnord Corporation or one of its affiliated companies.

©2023 Regal Rexnord Corporation, All Rights Reserved. MC017097E

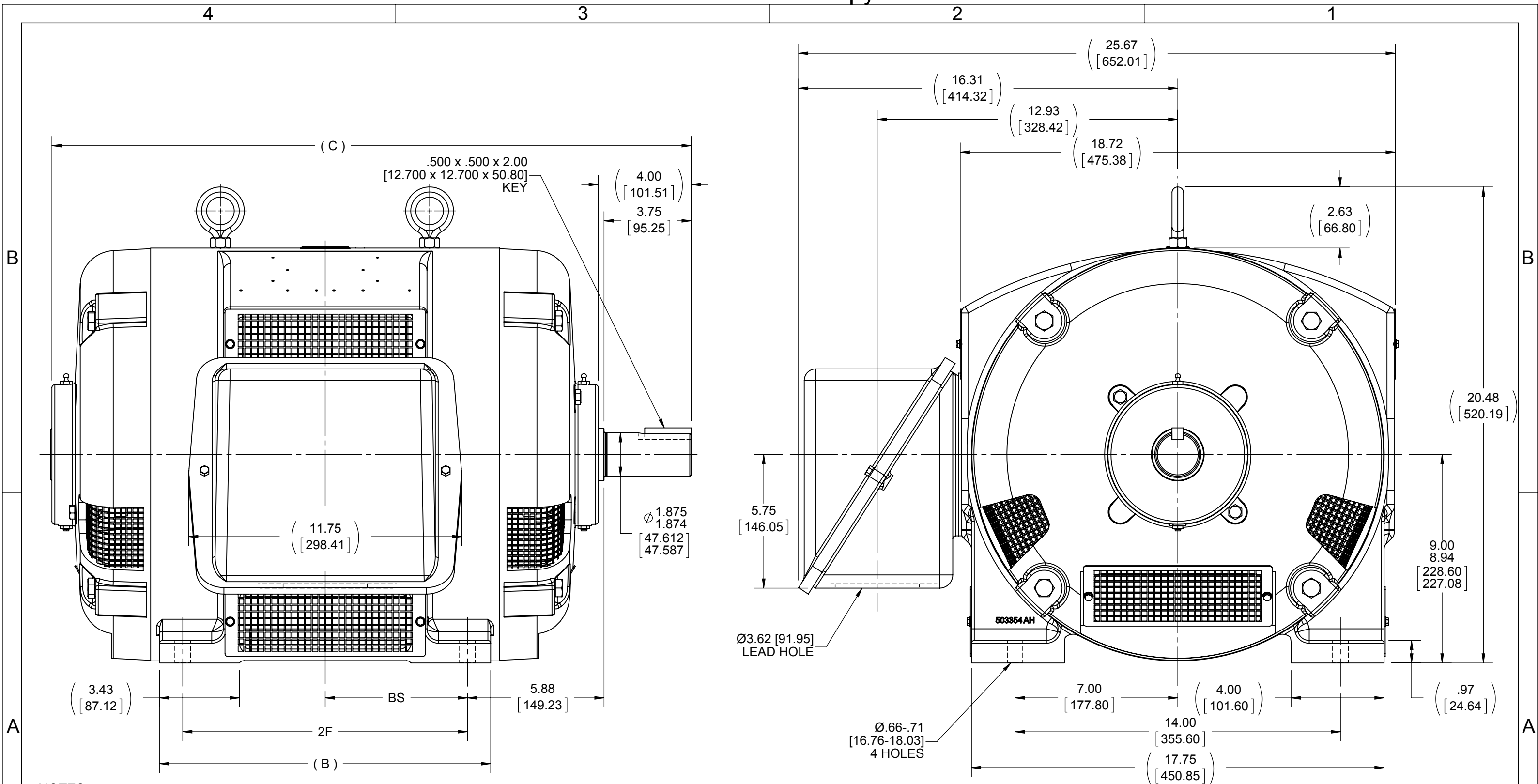
RegalRexnord

Nameplate Specifications

Phase	3	Output HP	60 & 50 Hp
Output KW	45.0 & 37.0 kW	Voltage	230/460 & 190/380 V
Speed	1782 & 1482 rpm	Service Factor	1.15 & 1.0
Frame	365TS	Enclosure	Drip Proof
Thermal Protection	No Protection	Efficiency	95 & 94.1 %
Ambient Temperature	40 °C	Frequency	60 & 50 Hz
Current	139/69.5 & 140/70 A	Power Factor	85
Duty	Continuous	Insulation Class	F
Design Code	B	KVA Code	G
Drive End Bearing Size	6312	Opp Drive End Bearing Size	6312
UL	Recognized	CSA	Y
CE	Y	IP Code	12
Number of Speeds	1		

Technical Specifications

Electrical Type	Squirrel Cage Induction Run	Starting Method	Across The Line
Poles	4	Rotation	Reversible
Resistance Main	.096 Ohms	Mounting	Rigid Base
Motor Orientation	Horizontal	Drive End Bearing	Ball
Opp Drive End Bearing	Ball	Frame Material	Cast Iron
Shaft Type	TS	Overall Length	27.50 in
Frame Length	15.00 in	Shaft Diameter	1.875 in
Shaft Extension	4 in	Assembly/Box Mounting	F1/F2 Capable
Outline Drawing	B-SS509966-1500	Connection Drawing	A-EE7308K




- NOTES:
- CONDUIT BOX CAN BE ROTATED IN 90° STEPS.
 - CONDUIT BOX CAN BE MOUNTED ON OPPOSITE SIDE BY REMOVING BRACKETS AND TURNING FRAME 180°.
 - NAMEPLATES TO BE READ FROM CONDUIT BOX SIDE OF MOTOR.
 - DIMENSION IN [] DESIGNATE MILLIMETERS.

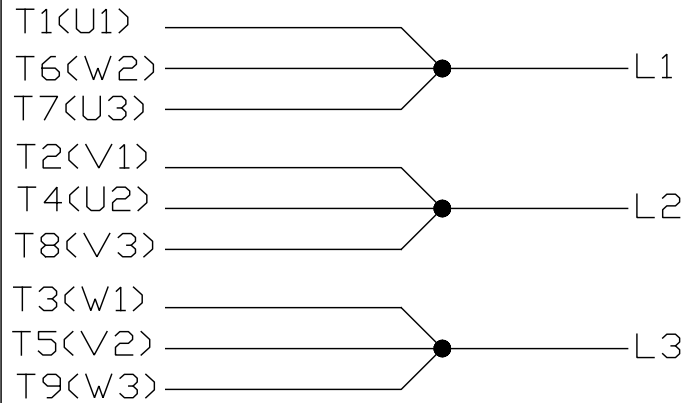
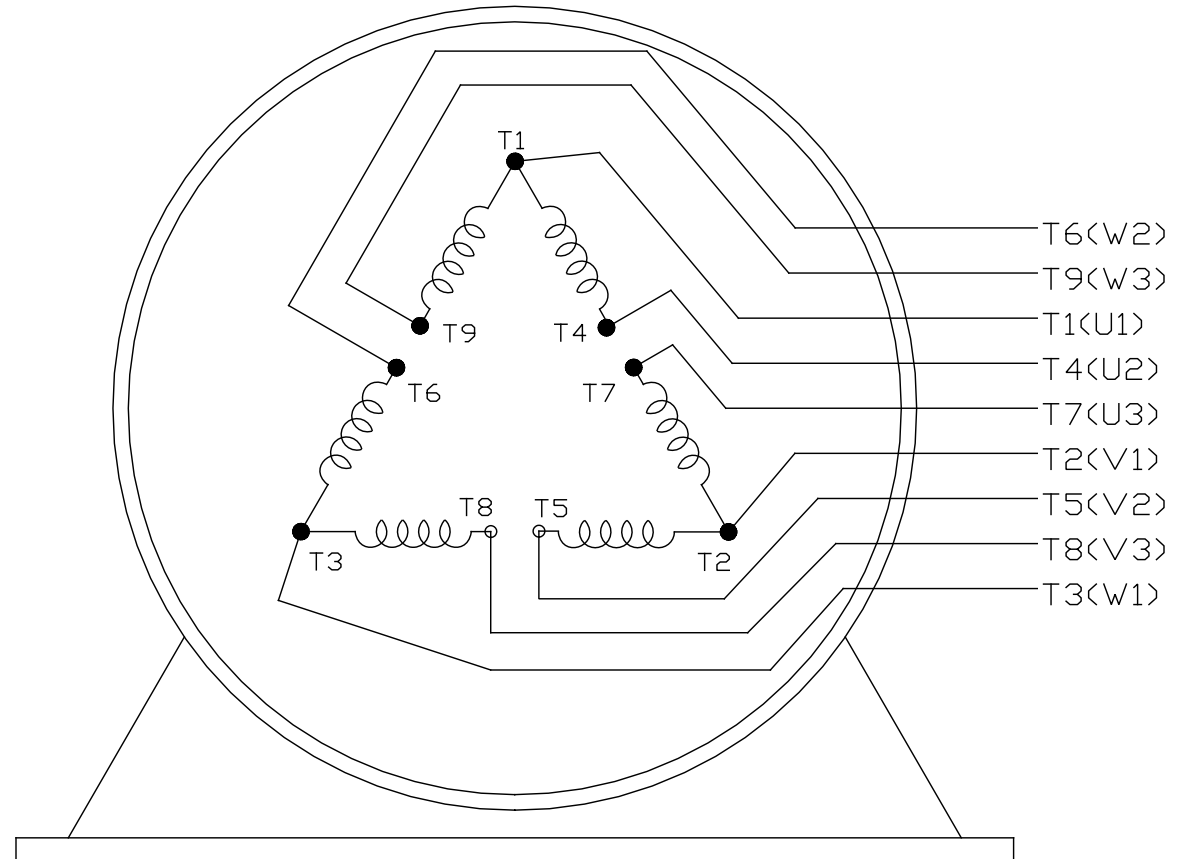
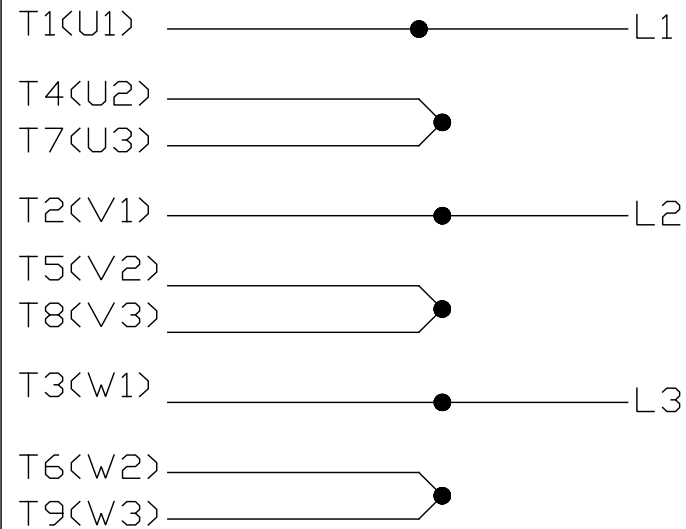
DASH	FRAME	B	C	2F	BS
1400	364TS	13.25 [336.55]	26.50 [673.10]	11.25 [285.75]	5.62 [142.75]
1500	365TS	14.25 [361.95]	27.50 [698.50]	12.25 [311.15]	6.12 [155.45]

DRAWING REVISION A	REVISION BY JJB	DATE 06-19-2014
ECO ECO-0053523	APPROVED BY TDB	DATE 06-19-2014
ECO DESCRIPTION UPDATED TO CURRENT STANDARDS COPYRIGHT REGAL BELOIT AMERICA, INC. ALL RIGHTS RESERVED PROPRIETARY AND CONFIDENTIAL INFORMATION - THIS DOCUMENT IS THE PROPERTY OF REGAL BELOIT AMERICA, INC. ("OWNER") AND CONTAINS OWNER'S PROPRIETARY INFORMATION. ANY PERSON, CORPORATION OR OTHER FIRM RECEIVING IT IS DEEMED, BY RECEIVING IT, TO AGREE THAT IT, AND/OR ANY PART OF IT, SHALL NOT BE DISCLOSED TO ANY PERSON, CORPORATION OR OTHER ENTITY, DUPLICATED, AND/OR USED, EXCEPT AS EXPRESSLY APPROVED IN WRITING IN ADVANCE BY OWNER. THIS DOCUMENT SHALL BE RETURNED TO OWNER UPON REQUEST. IT MAY BE SUBJECT TO CERTAIN RESTRICTIONS UNDER APPLICABLE EXPORT CONTROL LAWS AND REGULATIONS.		


TOLERANCES UNLESS OTHERWISE SPECIFIED:		
DEC.	INCH	mm
.X	±0.1	[±2.5]
.XX	±0.01	[±0.25]
.XXX	±0.005	[±0.127]
.XXXX	±0.0005	[±0.0127]
REMOVE BURRS & BREAK SHARP EDGES: .003/.015 [0.076/.381] CORNER FILLETS: .02 [51] MACHINED SURFACES: 125 INCH 3.2 mm		
mm SHOWN IN [BRACKETS]		

DRAWN BY TLB	 Regal Beloit America, Inc.		
DATE 02-04-1988			
APPROVED BY GK	DESCRIPTION OUTLINE		
DATE 02-04-1988	360TS & US FR - DR PR - SCREENED		
REFERENCE	MATERIAL	PROCESS/FINISH	
THIRD ANGLE PROJECTION	SIZE B	DRAWING NUMBER SS509966	SHEET 1 OF 1

EE7308K

LOW VOLTAGEHIGH VOLTAGE

VIEW OF TERMINAL END

			TOLERANCES UNLESS SPECIFIED			 REGAL - BELOIT CORPORATION	DRAWN PGK 06-04-1997		
NO.	REVISION	BY & DATE	CHK	ANG	± 7'30"		CHK	ML	06-05-1997
E	CORRECTED IEC MARKINGS ECD-0111208	WGJ 01-23-2017	EMH	DEC.	INCHES	TITLE CONNECTION DIAGRAM DELTA CON. - 3Ø - 9 LEADS	APPD	GK	06-15-1997
D	RE-DRAWN WITH REGAL LOGO ECD-0110493	WGJ 09-30-2016	EMH	.X	± .1		SCALE		
8	ADDED IEC DESIGNATIONS MU95020	TJW 4/30/2010	MJS	.XX	± .02		REF		
7	REVISED HIGH VOLTAGE L2 WAS L3 CN52600-354	MRB 09-21-1998		.XXX	± .005		FMF		
6	REDRAWN ON CADD	PGK 06-05-1997		.XXXX	± .0005		PREV		
						FINISH			
			RFP			CAD FILE EE7308K	SIZE	DRAWING NO.	PAGE OF
			DIST				A	EE7308K	REV.
									E

THIS DRAWING IN DESIGN AND DETAIL IS OUR PROPERTY AND MUST NOT BE USED EXCEPT IN CONNECTION WITH OUR WORK ALL RIGHTS OF DESIGN AND INVENTION ARE RESERVED
THIS IS AN ELECTRONICALLY GENERATED DOCUMENT - DO NOT SCALE THIS PRINT

CERTIFICATION DATA SHEET

Model#: 365TSTD16042 AN
CONN. DIAGRAM: A-EE7308K
OUTLINE: B-SS509966-1500

WINDING#: T3654202 NONE 2
ASSEMBLY: F1/F2 CAPABLE

TYPICAL MOTOR PERFORMANCE DATA

HP	KW	SYNC. RPM	F.L. RPM	FRAME	ENCLOSURE	KVA CODE	DESIGN
60&50	45&37	1800	1782&1482	365TS	DP	G	B

PH	Hz	VOLTS	FL AMPS	START TYPE	DUTY	INSL	S.F	AMB°C	ELEVATION
3	60/50	230/460#190/ 380	139/69.5&140/ 70	ACROSS THE LINE	CONTINUOU S	F3	1.15/1.0	40	3300

FULL LOAD EFF: 95&94.1	3/4 LOAD EFF: 95	1/2 LOAD EFF: 94.5	GTD. EFF	ELEC. TYPE	NO LOAD AMPS
FULL LOAD PF: 85&85	3/4 LOAD PF: 82	1/2 LOAD PF: 74	94.1	SQ CAGE IND RUN	47 / 23.5

F.L. TORQUE	LOCKED ROTOR AMPS	L.R. TORQUE	B.D. TORQUE	F.L. RISE°C
177 LB-FT	870 / 435	350 LB-FT 195	450 LB-FT 255	30

SOUND PRESSURE @ 3 FT.	SOUND POWER	ROTOR WK^2	MAX. WK^2	SAFE STALL TIME	STARTS /HOUR	APPROX. MOTOR WGT
75 dBA	85 dBA	15 LB-FT^2	- LB-FT^2	20 SEC.	-	875 LBS.

*** SUPPLEMENTAL INFORMATION ***

DE BRACKET TYPE	ODE BRACKET TYPE	MOUNT TYPE	ORIENTATION	SEVERE DUTY	HAZARDOUS LOCATION	DRIP COVER	SCREENS	PAINT
STANDARD	STANDARD	RIGID	HORIZONTAL	FALSE	NONE	FALSE	NONE	BLUE (ENAMEL)

BEARINGS		GREASE	SHAFT TYPE	SPECIAL DE	SPECIAL ODE	SHAFT MATERIAL	FRAME MATERIAL
DE	OPE						
BALL	BALL						
6312	6312	POLYREX EM	TS	NONE	NONE	1045 HOT ROLLED (C-204)	CAST IRON

THERMO-PROTECTORS				THERMISTORS	CONTROL	SPACE /n HEATERS
THERMOSTATS	PROTECTORS	WDG RTDs	BRG RTDs			
NONE	NOT	NONE	NONE	NONE	FALSE	NONE VOLTS

If Inverter equals NONE, contact factory for further
information

INVERTER TORQUE: NONE
INV. HP SPEED RANGE: NONE
ENCODER: NONE
NONE NONE
NONE NONE PPR
BRAKE: NONE NONE
NONE P/N NONE
NONE NONE
NONE FT-LB NONE V NONE Hz

*
N
O
T
E
S
*

DATE: 06/21/2017 08:50:32 AM
 FORM 3531 REV.3 02/07/99
 ** Subject to change without notice.

Data Sheet

Date: 6/19/2017

Customer: _____

Attention: _____

Submitted by: FAREEDA DUDEKULA



365TSTD16042

Submittal

Data @ 460 V

Motor Load Data

Load	0%	25%	50%	75%	100%	115%	125%	LR	
Current (Amps)	23.5	28.5	40.0	54.0	69.5	79.5	86.0	435	
Torque (ft-lb)	0.00	44.0	88.0	132	177	203	221	350	
RPM	1800	1795	1792	1788	1782	1,780	1778	0	
Efficiency (%)		91.0	94.5	95.0	95.0	95.0	94.5		
P.F. (%)	5.0	54.0	74.0	82.0	85.0	86.0	86.0	32.0	

Motor Speed Data

	LR	Pull-Up	BD	Rated	Idle	Information Block																												
Speed (RPM)	0	900	1700	1782	1800	HP	60.0																											
Current (Amps)	435	400	250	69.5	23.5	Sync. RPM	1800																											
Torque (ft-lb)	350	300	450	177	0.00	Frame	365																											
<div><div>— Efficiency (%)</div><div>— P.F. (%)</div><div>— Current (Amps)</div><table><caption>Graph Data Points (Estimated)</caption><thead><tr><th>Load (%)</th><th>Efficiency (%)</th><th>P.F. (%)</th><th>Current (Amps)</th></tr></thead><tbody><tr><td>25</td><td>91</td><td>54</td><td>23.5</td></tr><tr><td>50</td><td>94</td><td>75</td><td>35</td></tr><tr><td>75</td><td>95</td><td>82</td><td>45</td></tr><tr><td>100</td><td>95</td><td>85</td><td>60</td></tr><tr><td>125</td><td>95</td><td>86</td><td>90</td></tr></tbody></table></div>						Load (%)	Efficiency (%)	P.F. (%)	Current (Amps)	25	91	54	23.5	50	94	75	35	75	95	82	45	100	95	85	60	125	95	86	90	Enclosure	DP			
						Load (%)	Efficiency (%)	P.F. (%)	Current (Amps)																									
						25	91	54	23.5																									
						50	94	75	35																									
						75	95	82	45																									
						100	95	85	60																									
						125	95	86	90																									
						Construction	TDS																											
						Voltage	30/460#190/381V																											
						Frequency	60	Hz																										
						Design	A																											
						LR Code letter	G																											
						Service Factor	1.15																											
						Temp Rise @ FL	30	° C																										
						Duty	CONT																											
						Ambient	40	° C																										
						Elevation	1,000 feet																											
Rotor/Shaft wk²	15.0	Lb-Ft²																																
Ref Wdg	T3654202 NONE																																	
Sound Pressure @ 1M	75	dBA																																
VFD Rating	NONE																																	
Outline Dwg	B-SS509966-1500																																	
Conn. Diag	A-EE7308K																																	
Additional Specifications:																																		
0																																		
0																																		
EQUIV CKT (OHMS / PHASE)																																		
R1	R2	X1	X2	Xm																														
0.0640	0.0330	0.4070	0.4820	11.2810																														

Speed -Torque Curve

