

PRODUCT INFORMATION PACKET

marathon®
Motors

Model No: 365TSTDS16041

Catalog No: E782C

XRI® General Purpose General Purpose Motor, 75 & 60 HP, 3 Ph, 60 & 50 Hz, 230/460 & 190/380 V,
1800 & 1500 RPM, 365TS Frame, DP



Regal and Marathon are trademarks of Regal Rexnord Corporation or one of its affiliated companies.

©2023 Regal Rexnord Corporation, All Rights Reserved. MC017097E

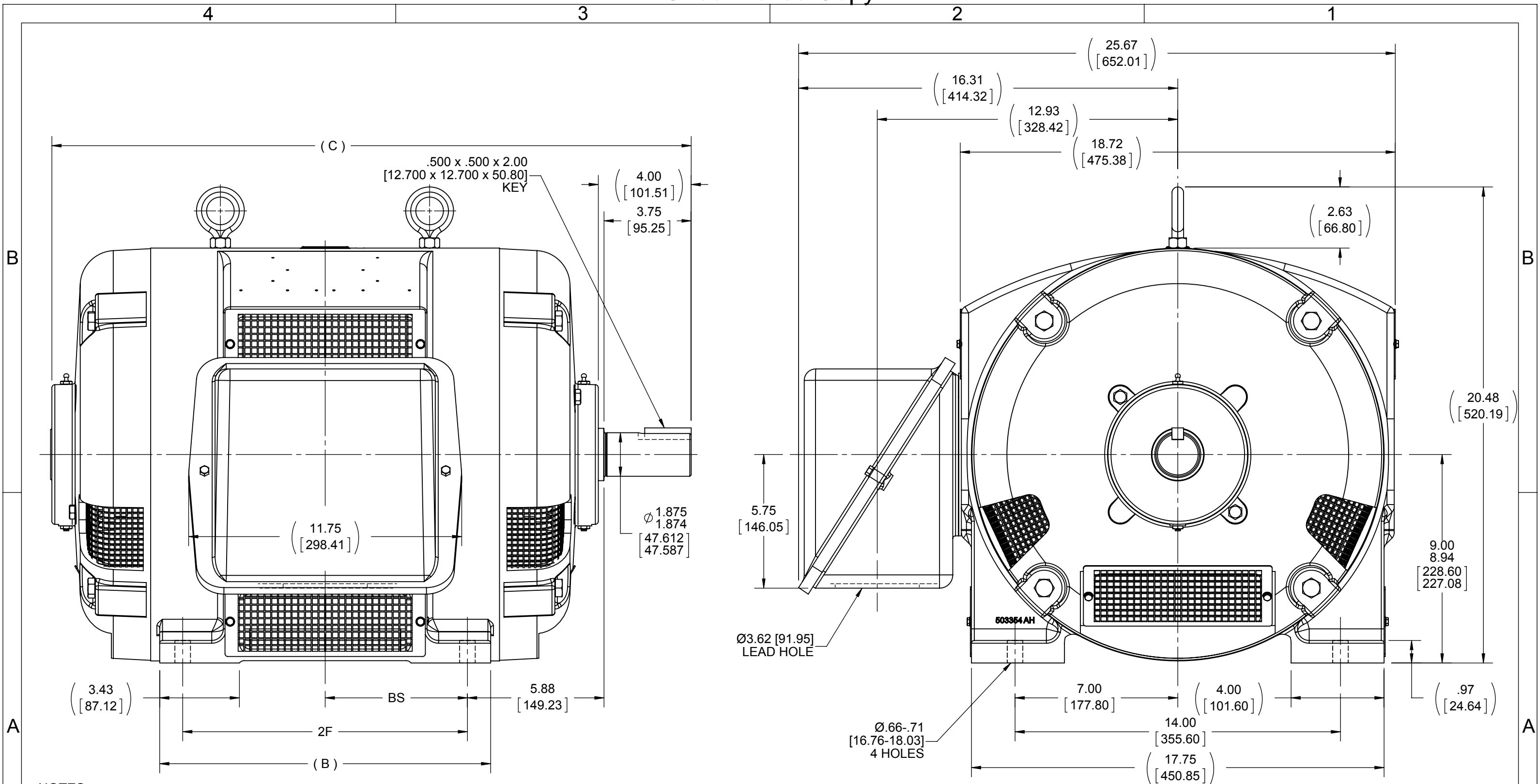
RegalRexnord

Nameplate Specifications

Phase	3	Output HP	75 & 60 Hp
Output KW	56.0 & 45.0 kW	Voltage	230/460 & 190/380 V
Speed	1780 & 1475 rpm	Service Factor	1.15 & 1.0
Frame	365TS	Enclosure	Drip Proof
Thermal Protection	No Protection	Efficiency	95 & 94.5 %
Ambient Temperature	40 °C	Frequency	60 & 50 Hz
Current	174/87 & 171/85.5 A	Power Factor	85
Duty	Continuous	Insulation Class	F
Design Code	B	KVA Code	G
Drive End Bearing Size	6312	Opp Drive End Bearing Size	6312
UL	Recognized	CSA	Y
CE	Y	IP Code	12
Number of Speeds	1		

Technical Specifications

Electrical Type	Squirrel Cage Induction Run	Starting Method	Across The Line
Poles	4	Rotation	Reversible
Resistance Main	.084 Ohms	Mounting	Rigid Base
Motor Orientation	Horizontal	Drive End Bearing	Ball
Opp Drive End Bearing	Ball	Frame Material	Cast Iron
Shaft Type	TS	Overall Length	27.50 in
Frame Length	15.00 in	Shaft Diameter	1.875 in
Shaft Extension	4 in	Assembly/Box Mounting	F1/F2 Capable
Connection Drawing	A-EE7308K	Outline Drawing	B-SS509966-1500




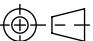
NOTES:

1. CONDUIT BOX CAN BE ROTATED IN 90° STEPS.
2. CONDUIT BOX CAN BE MOUNTED ON OPPOSITE SIDE BY REMOVING BRACKETS AND TURNING FRAME 180°.
3. NAMEPLATES TO BE READ FROM CONDUIT BOX SIDE OF MOTOR.
4. DIMENSION IN [] DESIGNATE MILLIMETERS.

DASH	FRAME	B	C	2F	BS
1400	364TS	13.25 [336.55]	26.50 [673.10]	11.25 [285.75]	5.62 [142.75]
1500	365TS	14.25 [361.95]	27.50 [698.50]	12.25 [311.15]	6.12 [155.45]

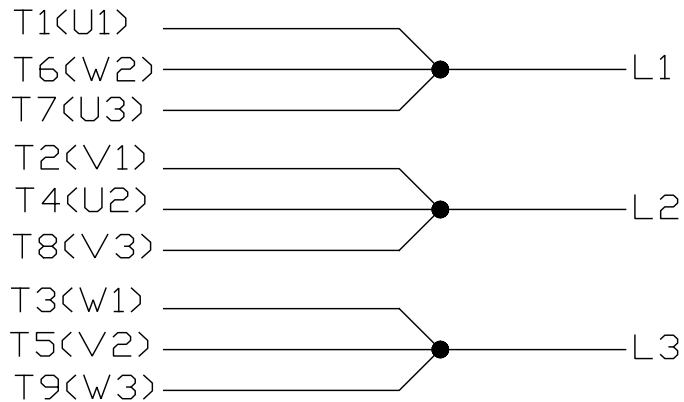
DRAWING REVISION	REVISION BY	DATE
A	JJB	06-19-2014
ECO	APPROVED BY	DATE
ECO-0053523	TDB	06-19-2014
ECO DESCRIPTION		
UPDATED TO CURRENT STANDARDS		
COPYRIGHT REGAL BELOIT AMERICA, INC. ALL RIGHTS RESERVED. PROPRIETARY AND CONFIDENTIAL INFORMATION - THIS DOCUMENT IS THE PROPERTY OF REGAL BELOIT AMERICA, INC. ("OWNER") AND CONTAINS OWNER'S PROPRIETARY INFORMATION. ANY PERSON, CORPORATION OR OTHER FIRM RECEIVING IT IS DEEMED, BY RECEIVING IT, TO AGREE THAT IT, AND/OR ANY PART OF IT, SHALL NOT BE DISCLOSED TO ANY PERSON, CORPORATION OR OTHER ENTITY, DUPLICATED, AND/OR USED, EXCEPT AS EXPRESSLY APPROVED IN WRITING IN ADVANCE BY OWNER. THIS DOCUMENT SHALL BE RETURNED TO OWNER UPON REQUEST. IT MAY BE SUBJECT TO CERTAIN RESTRICTIONS UNDER APPLICABLE EXPORT CONTROL LAWS AND REGULATIONS.		

TOLERANCES UNLESS OTHERWISE SPECIFIED:			
DEC.	INCH	mm	ANGLE
.X	±0.1	[±2.5]	±0.5°
.XX	±0.01	[±0.25]	
.XXX	±0.005	[±0.127]	
.XXXX	±0.0005	[±0.0127]	
REMOVE BURRS & BREAK SHARP EDGES: .003/.015 [0.076/.381] CORNER FILLETS: .02 [0.51] MACHINED SURFACES: 125 INCH 3.2 mm			
mm SHOWN IN [BRACKETS]			

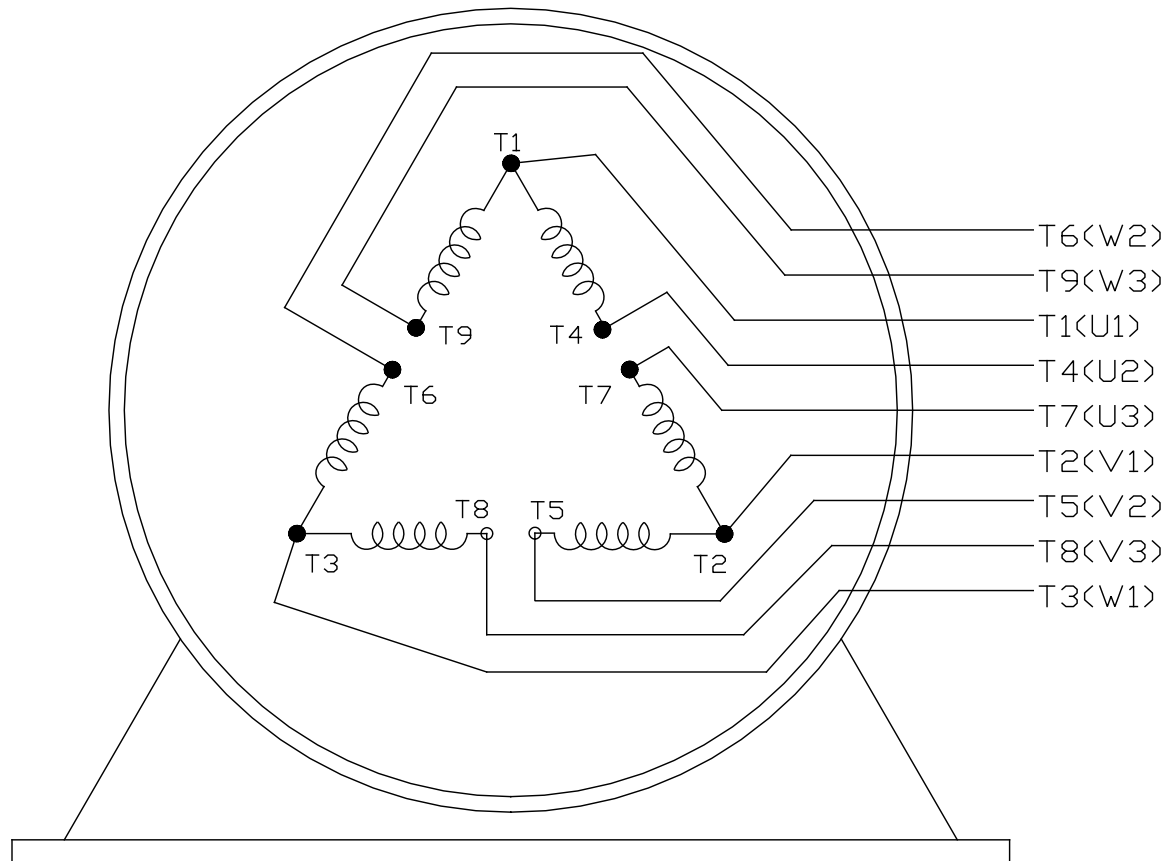
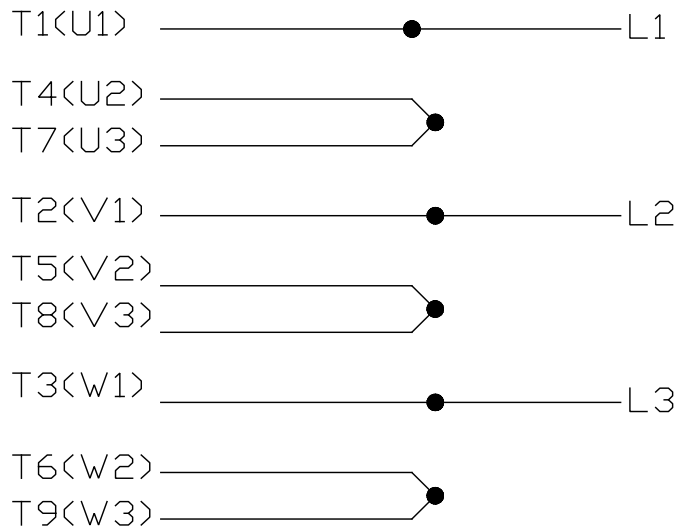
DRAWN BY TLB		 REGAL™ Regal Beloit America, Inc.	
DATE 02-04-1988		DESCRIPTION OUTLINE 360TS & US FR - DR PR - SCREENED	
APPROVED BY GK			
DATE 02-04-1988			
REFERENCE			
		MATERIAL	PROCESS/FINISH
THIRD ANGLE PROJECTION		SIZE B	DRAWING NUMBER SS509966
		SHEET 1 OF 1	

LOW VOLTAGE


EE7308K



HIGH VOLTAGE



VIEW OF TERMINAL END

				TOLERANCES UNLESS SPECIFIED		 REGAL - BELOIT CORPORATION		DRAWN PGK 06-04-1997	
E	CORRECTED IEC MARKINGS ECD-0111208	WGJ 01-23-2017	EMH	DEC.	INCHES			CHK	ML 06-05-1997
D	RE-DRAWN WITH REGAL LOGO ECD-0110493	WGJ 09-30-2016	EMH	.X	±.1			APPD	GK 06-15-1997
8	ADDED IEC DESIGNATIONS MU95020	TJW 4/30/2010	MJS	.XX	±.02	TITLE CONNECTION DIAGRAM DELTA CON. - 3Ø - 9 LEADS		SCALE	
7	REVISED HIGH VOLTAGE L2 WAS L3 CN52600-354	MRB 09-21-1998		.XXX	±.005			REF	
6	REDRAWN ON CADD	PGK 06-05-1997		.XXXX	±.0005	MAT'L.		FMF	
NO.	REVISION	BY & DATE	CHK	ANG	± 7'30"	FINISH		PREV	
THIS DRAWING IN DESIGN AND DETAIL IS OUR PROPERTY AND MUST NOT BE USED EXCEPT IN CONNECTION WITH OUR WORK ALL RIGHTS OF DESIGN AND INVENTION ARE RESERVED THIS IS AN ELECTRONICALLY GENERATED DOCUMENT - DO NOT SCALE THIS PRINT			RFP		CAD FILE EE7308K		SIZE A	DRAWING NO. EE7308K	PAGE OF E
			DIST						

CERTIFICATION DATA SHEET

Model#: 365TSTD16041 AN
CONN. DIAGRAM: A-EE7308K
OUTLINE: B-SS509966-1500

WINDING#: T3654147 NONE 1
ASSEMBLY: F1/F2 CAPABLE

TYPICAL MOTOR PERFORMANCE DATA

HP	KW	SYNC. RPM	F.L. RPM	FRAME	ENCLOSURE	KVA CODE	DESIGN
75&60	56&45	1800	1780&1475	365TS	DP	G	B

PH	Hz	VOLTS	FL AMPS	START TYPE	DUTY	INSL	S.F	AMB°C	ELEVATION
3	60/50	230/460#190/ 380	174/87&171/8 5.5	ACROSS THE LINE	CONTINUOU S	F3	1.15/1.0	40	3300

FULL LOAD EFF: 95&94.5	3/4 LOAD EFF: 95	1/2 LOAD EFF: 95	GTD. EFF	ELEC. TYPE	NO LOAD AMPS
FULL LOAD PF: 85&84	3/4 LOAD PF: 82	1/2 LOAD PF: 75.5	94.5	SQ CAGE IND RUN	56 / 28

F.L. TORQUE	LOCKED ROTOR AMPS	L.R. TORQUE	B.D. TORQUE	F.L. RISE°C
222 LB-FT	1084 / 542	375 LB-FT 169	575 LB-FT 259	45

SOUND PRESSURE @ 3 FT.	SOUND POWER	ROTOR WK^2	MAX. WK^2	SAFE STALL TIME	STARTS /HOUR	APPROX. MOTOR WGT
75 dBA	85 dBA	15 LB-FT^2	400 LB-FT^2	20 SEC.	2	875 LBS.

*** SUPPLEMENTAL INFORMATION ***

DE BRACKET TYPE	ODE BRACKET TYPE	MOUNT TYPE	ORIENTATION	SEVERE DUTY	HAZARDOUS LOCATION	DRIP COVER	SCREENS	PAINT
STANDARD	STANDARD	RIGID	HORIZONTAL	FALSE	NONE	FALSE	NONE	BLUE (ENAMEL)

BEARINGS		GREASE	SHAFT TYPE	SPECIAL DE	SPECIAL ODE	SHAFT MATERIAL	FRAME MATERIAL
DE	OPE						
BALL	BALL						
6312	6312	POLYREX EM	TS	NONE	NONE	1045 HOT ROLLED (C-204)	CAST IRON

THERMO-PROTECTORS				THERMISTORS	CONTROL	SPACE /n HEATERS
THERMOSTATS	PROTECTORS	WDG RTDs	BRG RTDs			
NONE	NOT	NONE	NONE	NONE	FALSE	NONE VOLTS

If Inverter equals NONE, contact factory for further
information

* N O T E S *	INVERTER TORQUE: NONE
	INV. HP SPEED RANGE: NONE
	ENCODER: NONE
	NONE NONE NONE NONE PPR
* N O T E S *	BRAKE: NONE NONE
	NONE P/N NONE
	NONE NONE
	NONE FT-LB NONE V NONE Hz

DATE: 06/21/2017 08:49:57 AM
 FORM 3531 REV.3 02/07/99
 ** Subject to change without notice.

Data Sheet

Date: 6/20/2017

Customer: _____

Attention: _____

Submitted by: FAREEDA DUDEKULA



365TSTD16041

Submittal

Data @ 460 V

Motor Load Data

Load	0%	25%	50%	75%	100%	115%	125%	LR	
Current (Amps)	28.0	34.5	49.5	67.5	87.0	100	109	542	
Torque (ft-lb)	0.00	55.0	110	166	222	255	278	375	
RPM	1800	1795	1790	1785	1780	1,775	1772	0	
Efficiency (%)		92.4	95.0	95.0	95.0	95.0	94.5		
P.F. (%)	5.0	55.0	75.5	82.0	85.0	85.5	85.5	35.0	

Motor Speed Data

	LR	Pull-Up	BD	Rated	Idle																																					
Speed (RPM)	0	900	1700	1780	1800																																					
Current (Amps)	542	500	325	87.0	28.0																																					
Torque (ft-lb)	375	350	575	222	0.00																																					
<div><div>Efficiency (%)</div><div>P.F. (%)</div><div>Current (Amps)</div></div> <table><thead><tr><th>LOAD</th><th>Efficiency (%)</th><th>P.F. (%)</th><th>Current (Amps)</th></tr></thead><tbody><tr><td>0%</td><td></td><td></td><td>28.0</td></tr><tr><td>20%</td><td>92.0</td><td>55.0</td><td>35.0</td></tr><tr><td>40%</td><td>94.0</td><td>75.0</td><td>45.0</td></tr><tr><td>60%</td><td>95.0</td><td>80.0</td><td>60.0</td></tr><tr><td>80%</td><td>95.0</td><td>84.0</td><td>75.0</td></tr><tr><td>100%</td><td>95.0</td><td>86.0</td><td>90.0</td></tr><tr><td>120%</td><td>95.0</td><td>86.0</td><td>109.0</td></tr></tbody></table>						LOAD	Efficiency (%)	P.F. (%)	Current (Amps)	0%			28.0	20%	92.0	55.0	35.0	40%	94.0	75.0	45.0	60%	95.0	80.0	60.0	80%	95.0	84.0	75.0	100%	95.0	86.0	90.0	120%	95.0	86.0	109.0					
						LOAD	Efficiency (%)	P.F. (%)	Current (Amps)																																	
						0%			28.0																																	
						20%	92.0	55.0	35.0																																	
						40%	94.0	75.0	45.0																																	
						60%	95.0	80.0	60.0																																	
						80%	95.0	84.0	75.0																																	
						100%	95.0	86.0	90.0																																	
						120%	95.0	86.0	109.0																																	
						HP					75.0																															
						Sync. RPM					1800																															
						Frame					365																															
						Enclosure					DP																															
						Construction					TDS																															
						Voltage					30/460#190/381V																															
						Frequency					60 Hz																															
						Design					A																															
LR Code letter					G																																					
Service Factor					1.15																																					
Temp Rise @ FL					45 ° C																																					
Duty					CONT																																					
Ambient					40 ° C																																					
Elevation					1,000 feet																																					
Rotor/Shaft wk²					15.0 Lb-Ft²																																					
Ref Wdg					T3654147 NONE																																					
Sound Pressure @ 1M					75 dBA																																					
VFD Rating					NONE																																					
Outline Dwg					B-SS509966-1500																																					
Conn. Diag					A-EE7308K																																					
Additional Specifications:																																										
0																																										
0																																										
EQUIV CKT (OHMS / PHASE)																																										
R1		R2		X1	X2	Xm																																				
0.0560		0.0340		0.3450	0.4010	8.6560																																				

Speed -Torque Curve

