

PRODUCT INFORMATION PACKET



Model No: 365THFS16538
Catalog No: 365THFS16538
75,1800,TEBC,365TDVZ,3/60/230/460

Regal and Marathon are trademarks of Regal Rexnord Corporation or one of its affiliated companies.
©2024 Regal Rexnord Corporation, All Rights Reserved. MC017097E



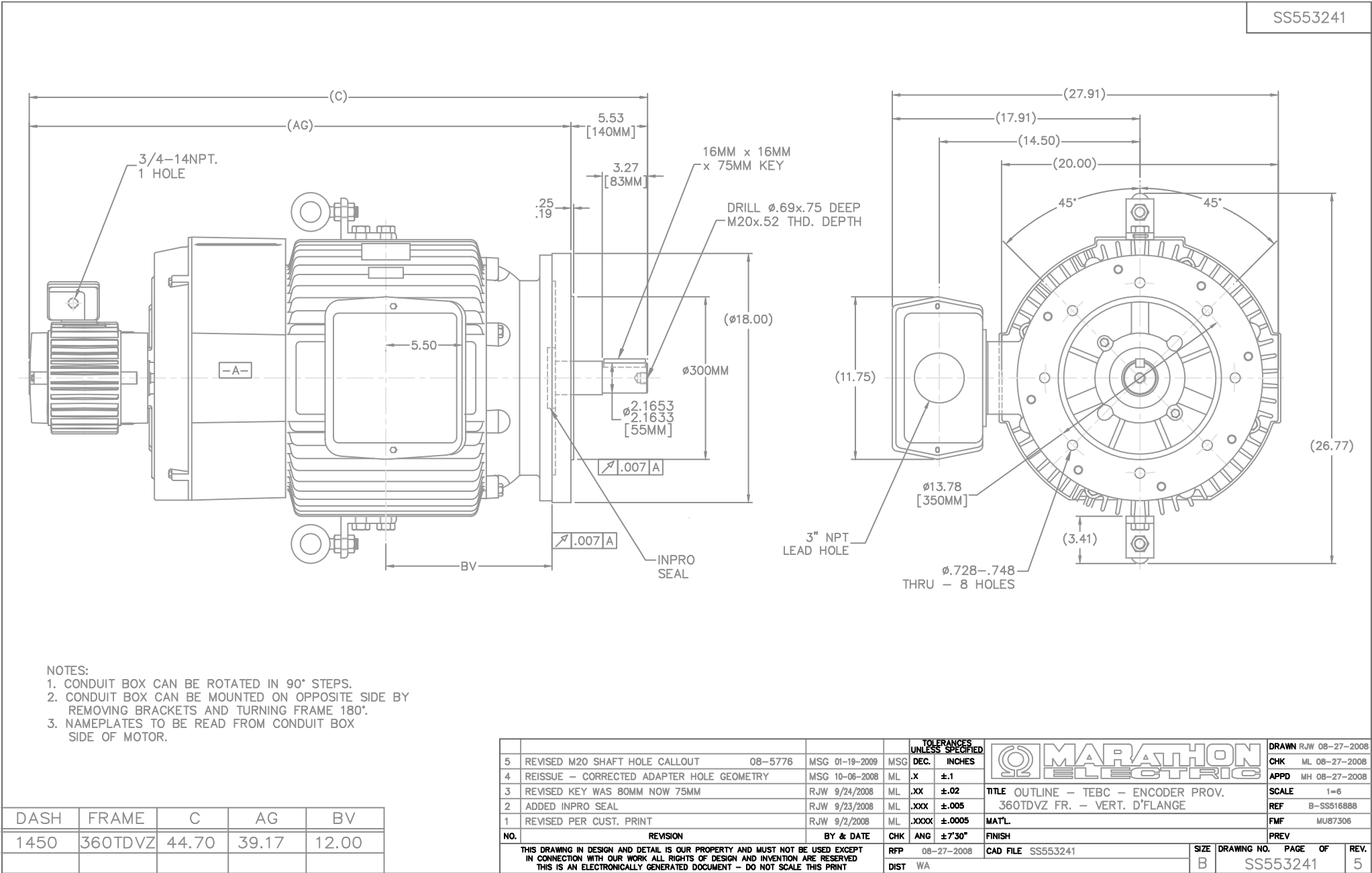
Nameplate Specifications

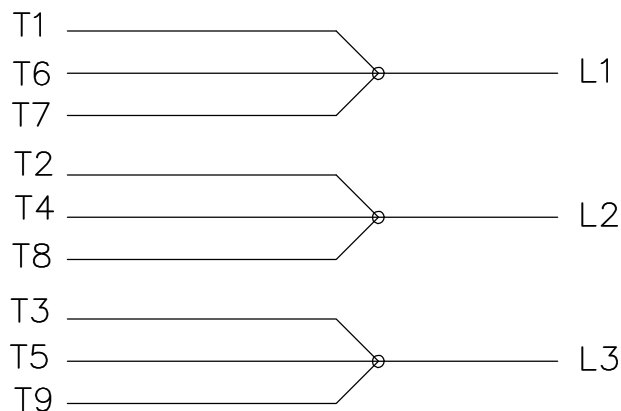
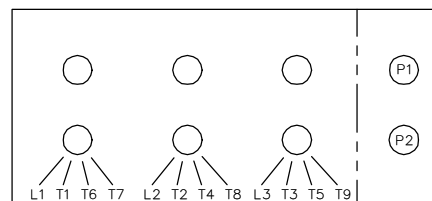
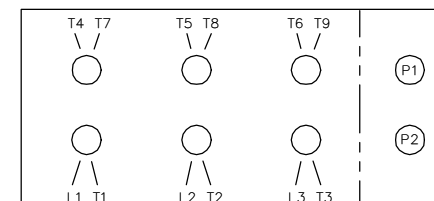
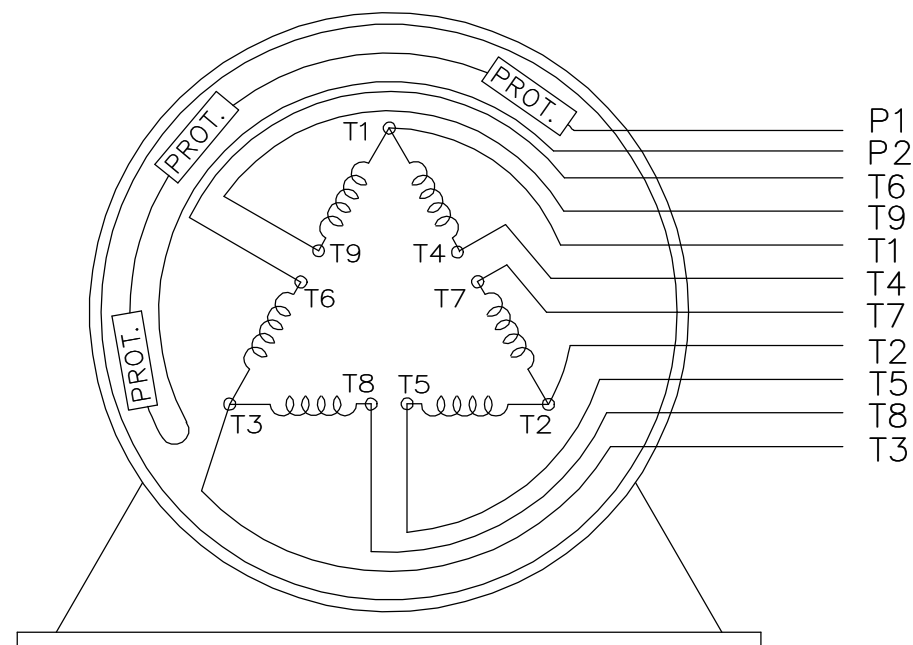
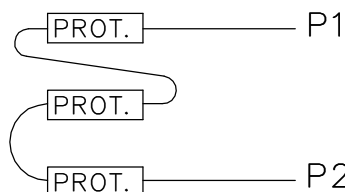
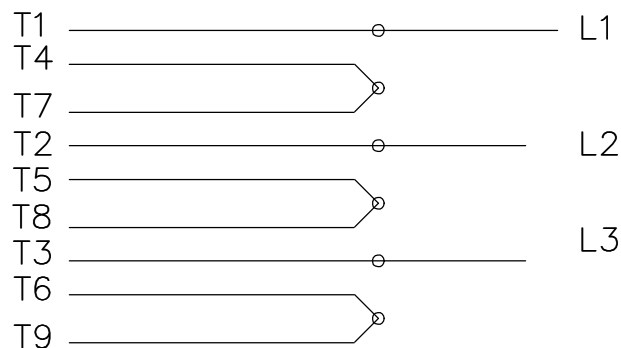
Phase	3	Output HP	75 Hp
Output KW	56.0 kW	Voltage	230/460 V
Speed	1775 rpm	Service Factor	1
Frame	365TDVZ	Enclosure	Totally Enclosed Blower cooled - Axial
Thermal Protection	Thermostat	Efficiency	94.5 %
Ambient Temperature	60 °C	Frequency	60 Hz
Current	174.0/87.0 A	Power Factor	85
Duty	Continuous	Insulation Class	F
Design Code	A	KVA Code	G
Drive End Bearing Size	6314	Opp Drive End Bearing Size	6312
UL	Recognized	CSA	Y
CE	Y	IP Code	54
Number of Speeds	1		

Technical Specifications


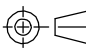
Electrical Type	Squirrel Cage Inverter Duty	Starting Method	Inverter Only
Poles	4	Rotation	Reversible
Resistance Main	.08 Ohms	Mounting	Round
Motor Orientation	Shaft Down	Drive End Bearing	Ball
Opp Drive End Bearing	Ball	Frame Material	Cast Iron
Shaft Type	Single Special Extension	Assembly/Box Mounting	F1/F2 CAPABLE
Outline Drawing	B-SS553241-1450	Connection Drawing	A-EE7308AD

This is an uncontrolled document once printed or downloaded and is subject to change without notice. Date Created:09/07/2024



LOW VOLTAGELOW VOLTAGEHIGH VOLTAGEHIGH VOLTAGEVIEW OF TERMINAL END

WHEN MORE THAN ONE PROT. IS USED; PROT. ARE CONNECTED IN SERIES

DRAWING REVISION L	REVISION BY JP	REV DATE/© DATE 06-21-2019	TOLERANCES (EXCEPT AS NOTED):				DRAWN BY MJD	 Regal Beloit America, Inc.	DESCRIPTION CONN DIAGRAM-EXTERNAL	
ECO ECO-0168744	APPROVED BY MH	DATE 06-21-2019	DEC. .X .XX .XXX .XXXX	INCH ±0.1 ±0.02 ±0.005 ±0.0005	mm [±3] [±0.5] [±0.13] [±0.013]	ANGLE ±7° 30"	DATE 12-19-1997			
ECO DESCRIPTION UPDATED TO CURRENT STANDARDS			REMOVE BURRS & BREAK SHARP EDGES: .003/.015 [.08/.38] X 45° CORNER FILLETS: R.02 [.5] MACHINED SURFACES: 200/ 5.1				APPROVED BY GK	MATERIAL		PROCESS/FINISH
COPYRIGHT (PER REVISION DATE) REGAL BELOIT AMERICA, INC. ALL RIGHTS RESERVED. PROPRIETARY AND CONFIDENTIAL INFORMATION - THIS DOCUMENT IS THE PROPERTY OF REGAL BELOIT AMERICA, INC. ("OWNER") AND CONTAINS OWNER'S PROPRIETARY INFORMATION. ANY PERSON, CORPORATION OR OTHER FIRM RECEIVING IT IS DEEMED, BY RECEIVING IT, TO AGREE THAT IT, AND/OR ANY PART OF IT, SHALL NOT BE DISCLOSED TO ANY PERSON, CORPORATION OR OTHER ENTITY, DUPLICATED, AND/OR USED, EXCEPT AS EXPRESSLY APPROVED IN WRITING IN ADVANCE BY OWNER. THIS DOCUMENT SHALL BE RETURNED TO OWNER UPON REQUEST. IT MAY BE SUBJECT TO CERTAIN RESTRICTIONS UNDER APPLICABLE EXPORT CONTROL LAWS AND REGULATIONS.			mm DIMENSIONS IN [BRACKETS] ARE FOR REFERENCE ONLY				DATE 01-07-1998			
			THIRD ANGLE PROJECTION 				REFERENCE	SIZE A	DRAWING NUMBER EE7308AD	SHEET 1 OF 1