

PRODUCT INFORMATION PACKET

marathon®
Motors

Model No: 364TTFS16584

Catalog No: E642A

40 HP Severe Duty Motor, 3 phase, 1200 RPM, 460 V, 364T Frame, TEFC
Severe Duty Motors



Regal and Marathon are trademarks of Regal Rexnord Corporation or one of its affiliated companies.
©2021 Regal Rexnord Corporation, All Rights Reserved. MC017097E

RegalRexnord

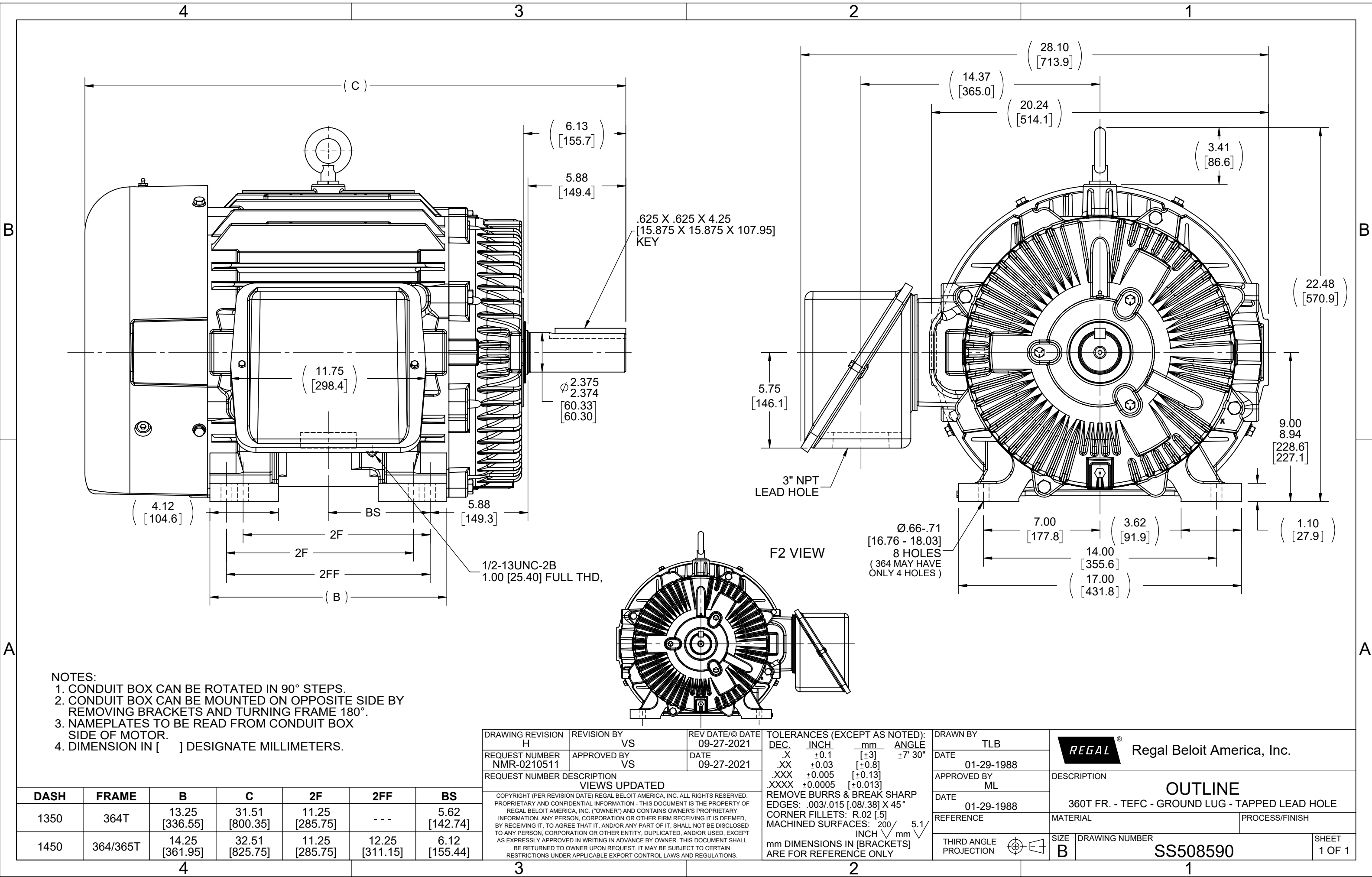
Nameplate Specifications

Output HP	40 Hp	Output KW	30.0 kW
Frequency	60 Hz	Voltage	460 V
Current	50.0 A	Speed	1185 rpm
Service Factor	1.15	Phase	3
Efficiency	94.1 %	Power Factor	80
Duty	Continuous	Insulation Class	F
Design Code	B	KVA Code	G
Frame	364T	Enclosure	Totally Enclosed Fan Cooled
Thermal Protection	No	Ambient Temperature	40 °C
Drive End Bearing Size	6314	Opp Drive End Bearing Size	6312
UL	Recognized	CSA	Y
CE	Y	IP Code	54
Number of Speeds	1		

Technical Specifications

Electrical Type	Squirrel Cage Inverter Rated	Starting Method	Line Or Inverter
Poles	6	Rotation	Reversible
Resistance Main	.16 Ohms	Mounting	Rigid Base
Motor Orientation	Horizontal	Drive End Bearing	Ball
Opp Drive End Bearing	Ball	Frame Material	Cast Iron
Shaft Type	T	Overall Length	31.51 in
Frame Length	13.50 in	Shaft Diameter	2.375 in
Shaft Extension	6.12 in	Assembly/Box Mounting	F1/F2 Capable
Connection Drawing	A-EE7300	Outline Drawing	B-SS508590-1350

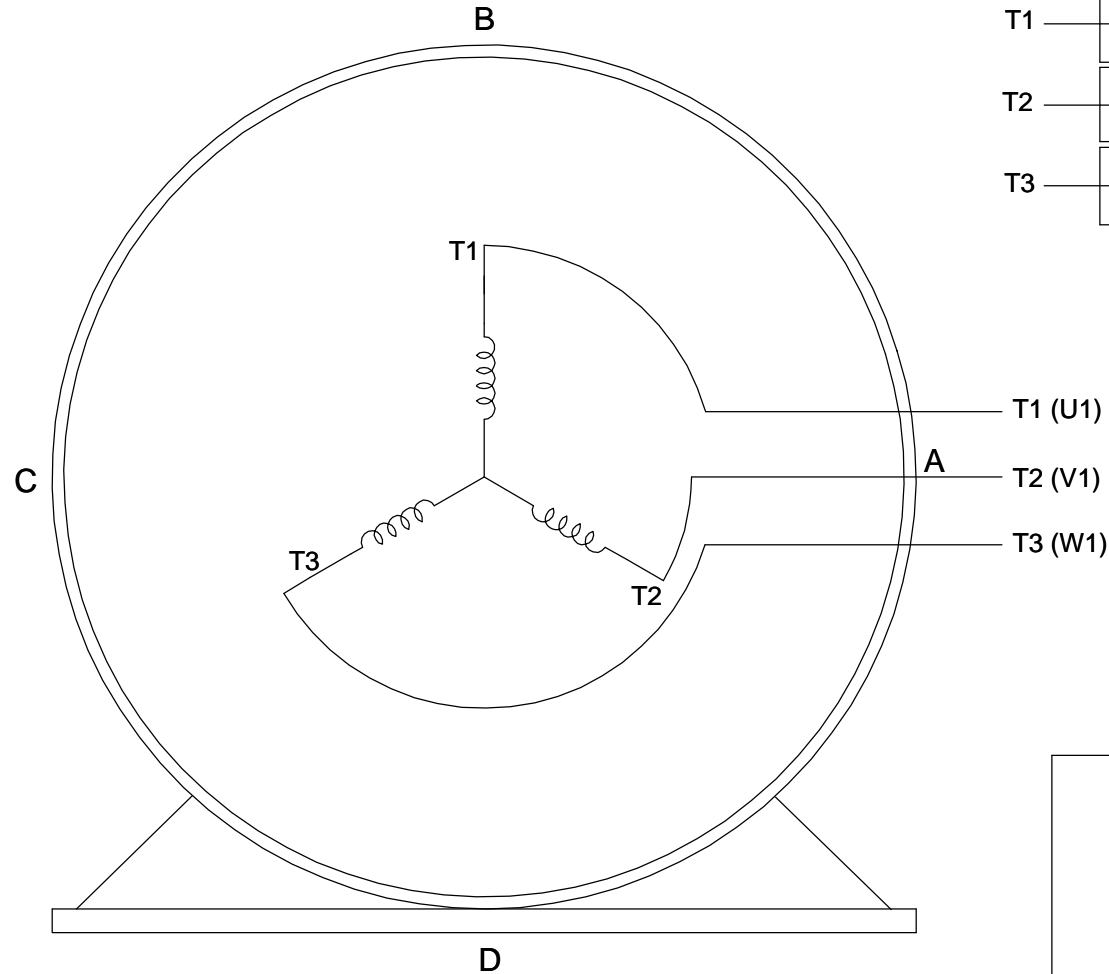
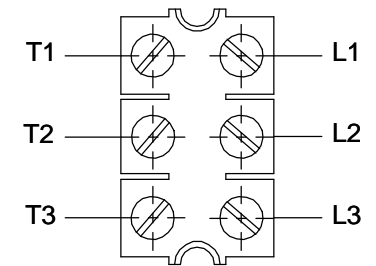
This is an uncontrolled document once printed or downloaded and is subject to change without notice. Date Created:10/11/2021



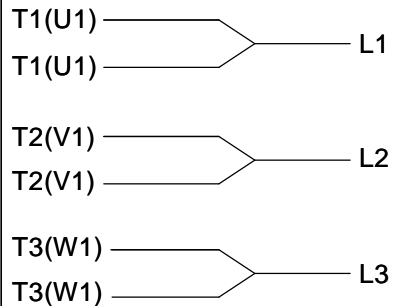
THREE PHASE - SINGLE VOLTAGE MOTOR - CONDUIT BOX @ 'A'

TO REVERSE ROTATION:
INTERCHANGE ANY TWO
LINE LEAD CONNECTIONS.

TERMINAL BLOCK WHEN SPECIFIED



IF MOTOR HAS 6 LEADS



A-9806 DECAL

OPTIONAL CORD CONNECTION



VIEW OF TERMINAL END

DRAWING REVISION AB	REVISION BY JJB	DATE 06-27-2017
ECO ECO-0125361	APPROVED BY TB	DATE 06-27-2017
ECO DESCRIPTION UPDATED TO CURRENT STANDARDS		
<small>COPYRIGHT REGAL BELOIT AMERICA, INC. ALL RIGHTS RESERVED. PROPRIETARY AND CONFIDENTIAL INFORMATION - THIS DOCUMENT IS THE PROPERTY OF REGAL BELOIT AMERICA, INC. ("OWNER") AND CONTAINS OWNER'S PROPRIETARY INFORMATION. ANY PERSON, CORPORATION OR OTHER FIRM RECEIVING IT IS DEEMED, BY RECEIVING IT, TO AGREE THAT IT, AND/OR ANY PART OF IT, SHALL NOT BE DISCLOSED TO ANY PERSON, CORPORATION OR OTHER ENTITY, DUPLICATED, AND/OR USED, EXCEPT AS EXPRESSLY APPROVED IN WRITING IN ADVANCE BY OWNER. THIS DOCUMENT SHALL BE RETURNED TO OWNER UPON REQUEST. IT MAY BE SUBJECT TO CERTAIN RESTRICTIONS UNDER APPLICABLE EXPORT CONTROL LAWS AND REGULATIONS.</small>		

DRAWN BY DA
DATE 03-26-1993
APPROVED BY TB
DATE 03-26-1993
REFERENCE
THIRD ANGLE PROJECTION



Regal Beloit America, Inc.

DESCRIPTION
CONNECTION DIAGRAM
EXTERNAL - SINGLE VOLTAGE - 3Ø MOTOR

MATERIAL PROCESS/FINISH

SIZE A	DRAWING NUMBER EE7300	SHEET 1 OF 1
-----------	--------------------------	-----------------

CERTIFICATION DATA SHEET

Model#: 364TTFS16584 AN
CONN. DIAGRAM: A-EE7300
OUTLINE: B-SS508590-1350

WINDING#: T365671 NONE 4
ASSEMBLY: F1/F2 CAPABLE

TYPICAL MOTOR PERFORMANCE DATA

HP	KW	SYNC. RPM	F.L. RPM	FRAME	ENCLOSURE	KVA CODE	DESIGN
40	30	1200	1185	364T	TEFC	G	B

PH	Hz	VOLTS	FL AMPS	START TYPE	DUTY	INSL	S.F	AMB°C	ELEVATION
3	60	460	50	LINE OR INVERTER	CONTINUOUS	F1	1.15	40	3300

FULL LOAD EFF: 94.1	3/4 LOAD EFF: 94.1	1/2 LOAD EFF: 93.6	GTD. EFF	ELEC. TYPE	NO LOAD AMPS
FULL LOAD PF: 80	3/4 LOAD PF: 75	1/2 LOAD PF: 64	93	SQ CAGE INV RATED	21.5

F.L. TORQUE	LOCKED ROTOR AMPS	L.R. TORQUE	B.D. TORQUE	F.L. RISE°C
177 LB-FT	290	350 LB-FT 198	450 LB-FT 254	65

SOUND PRESSURE @ 3 FT.	SOUND POWER	ROTOR WK^2	MAX. WK^2	SAFE STALL TIME	STARTS /HOUR	APPROX. MOTOR WGT
58 dBA	68 dBA	15 LB-FT^2	- LB-FT^2	25 SEC.	-	875 LBS.

*** SUPPLEMENTAL INFORMATION ***

DE BRACKET TYPE	ODE BRACKET TYPE	MOUNT TYPE	ORIENTATION	SEVERE DUTY	HAZARDOUS LOCATION	DRIP COVER	SCREENS	PAINT
STANDARD	STANDARD	RIGID	HORIZONTAL	PREMIUM SEVERE DUTY	DIVISION 2 T2B	FALSE	NONE	BLUE (EPOXY)

BEARINGS		GREASE	SHAFT TYPE	SPECIAL DE	SPECIAL ODE	SHAFT MATERIAL	FRAME MATERIAL
DE	OPE						
BALL	BALL						
6314	6312	POLYREX EM	T	NONE	NONE	1045 HOT ROLLED (C-204)	CAST IRON

THERMO-PROTECTORS				THERMISTORS	CONTROL	SPACE /n HEATERS
THERMOSTATS	PROTECTORS	WDG RTDs	BRG RTDs			
NONE	NOT	NONE	NONE	NONE	FALSE	NONE VOLTS

If Inverter equals NONE, contact factory for further information

INVERTER TORQUE: CONSTANT 2:1			
INV. HP SPEED RANGE: 1.5 X BASE SPEED			
ENCODER: NONE			
NONE NONE			
NONE NONE PPR			
BRAKE: NONE NONE			
NONE P/N NONE			
NONE NONE			
NONE FT-LB	NONE V	NONE Hz	

*
N
O
T
E
S
*

DATE: 06/21/2017 08:28:27 AM
 FORM 3531 REV.3 02/07/99
 ** Subject to change without notice.

Data Sheet

Date: 6/20/2017

Customer: _____

Attention: _____

Submitted by: FAREEDA DUDEKULA



364TTFS16584

Submittal

Data @ 460 V

Motor Load Data

Load	0%	25%	50%	75%	100%	115%	125%	LR	
Current (Amps)	21.5	24.5	31.0	40.0	50.0	56.5	61.0	290	
Torque (ft-lb)	0.00	44.0	88.0	133	177	205	223	350	
RPM	1200	1195	1192	1188	1185	1,180	1178	0	
Efficiency (%)		90.2	93.6	94.1	94.1	93.6	93.0		
P.F. (%)	4.0	42.5	64.0	75.0	80.0	81.5	82.0	32.0	

Motor Speed Data

	LR	Pull-Up	BD	Rated	Idle																				
Speed (RPM)	0	600	1100	1185	1200																				
Current (Amps)	290	250	175	50.0	21.5																				
Torque (ft-lb)	350	325	450	177	0.00																				
<div><div><div>Efficiency (%)</div><div>P.F. (%)</div><div>Current (Amps)</div></div><div>LOAD</div></div> <table><tr><td colspan="5">EQUIV CKT (OHMS / PHASE)</td></tr><tr><td>R1</td><td>R2</td><td>X1</td><td>X2</td><td>Xm</td></tr><tr><td>0.1130</td><td>0.0790</td><td>0.5180</td><td>0.8100</td><td>12.1240</td></tr></table>						EQUIV CKT (OHMS / PHASE)					R1	R2	X1	X2	Xm	0.1130	0.0790	0.5180	0.8100	12.1240	Information Block				
						EQUIV CKT (OHMS / PHASE)																			
						R1	R2	X1	X2	Xm															
						0.1130	0.0790	0.5180	0.8100	12.1240															
						HP		40.0																	
						Sync. RPM		1200																	
						Frame		364																	
						Enclosure		TEFC																	
						Construction		TFS																	
						Voltage		460 V																	
						Frequency		60 Hz																	
						Design		B																	
						LR Code letter		G																	
						Service Factor		1.15																	
						Temp Rise @ FL		65 °C																	
						Duty		CONT																	
						Ambient		40 °C																	
						Elevation		1,000 feet																	
						Rotor/Shaft wk ²		15.0 Lb-Ft ²																	
						Ref Wdg		T365671 NONE																	
						Sound Pressure @ 1M		58 dBA																	
						VFD Rating		CONSTANT 2:1																	
						Outline Dwg		B-SS508590-1350																	
Conn. Diag		A-EE7300																							
Additional Specifications:																									
0																									
0																									

					EQUIV CKT (OHMS / PHASE)									
R1	R2	X1	X2	Xm										
0.1130	0.0790	0.5180	0.8100	12.1240										

Speed -Torque Curve

