

# PRODUCT INFORMATION PACKET

Model No: 364TTFCD6535

Catalog No: E1240-P

Severe Duty Motors, TEFC, 60 HP, 3 Ph, 60 Hz, 460 V, 1780 RPM, 364T Frame



Regal and are trademarks of Regal Rexnord Corporation or one of its affiliated companies.  
©2022 Regal Rexnord Corporation, All Rights Reserved. MC017097E

### Nameplate Specifications

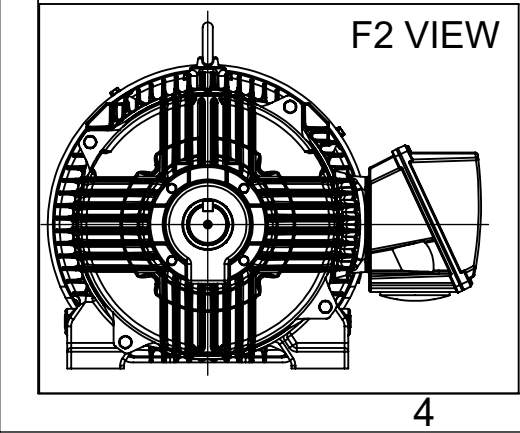
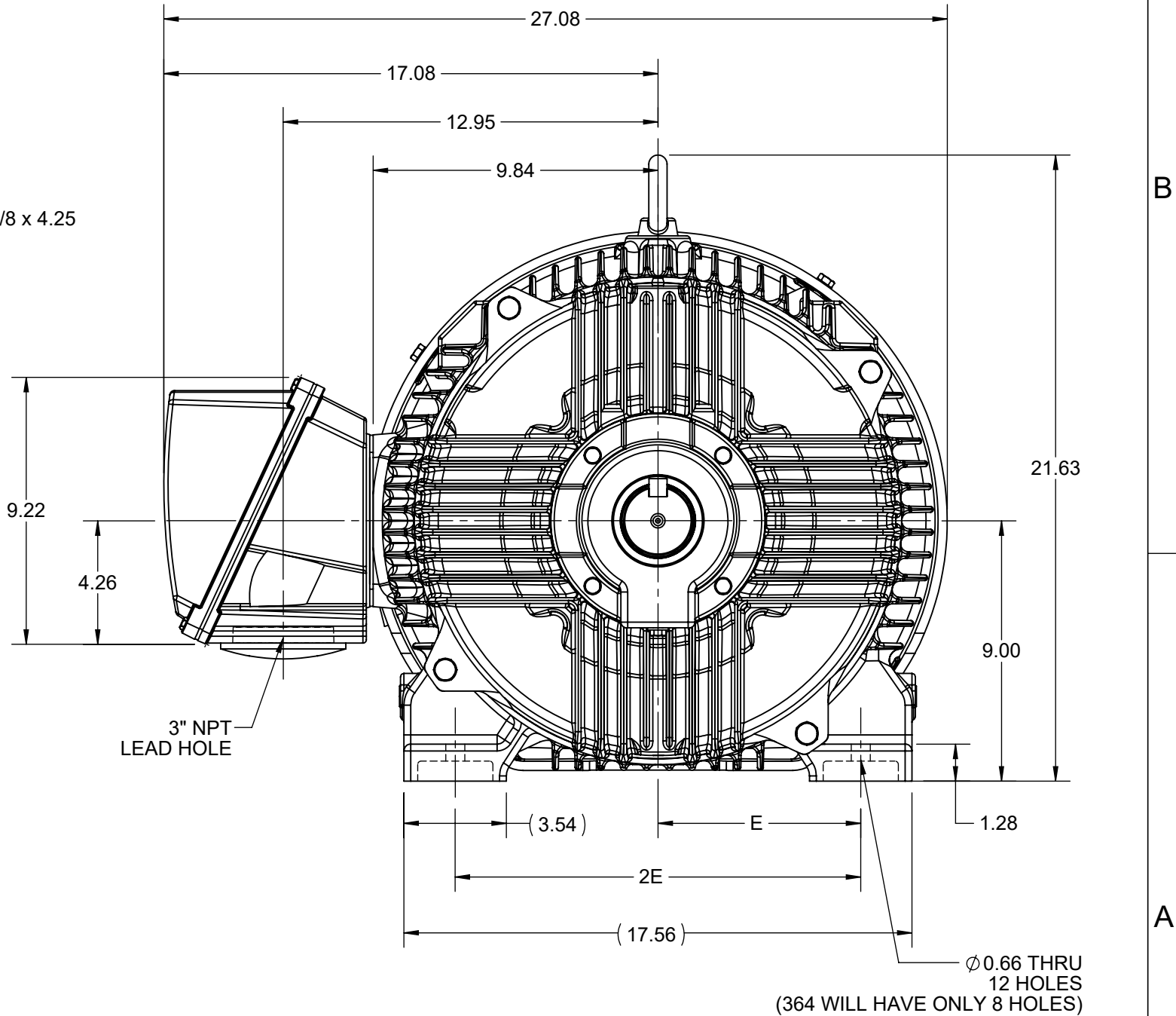
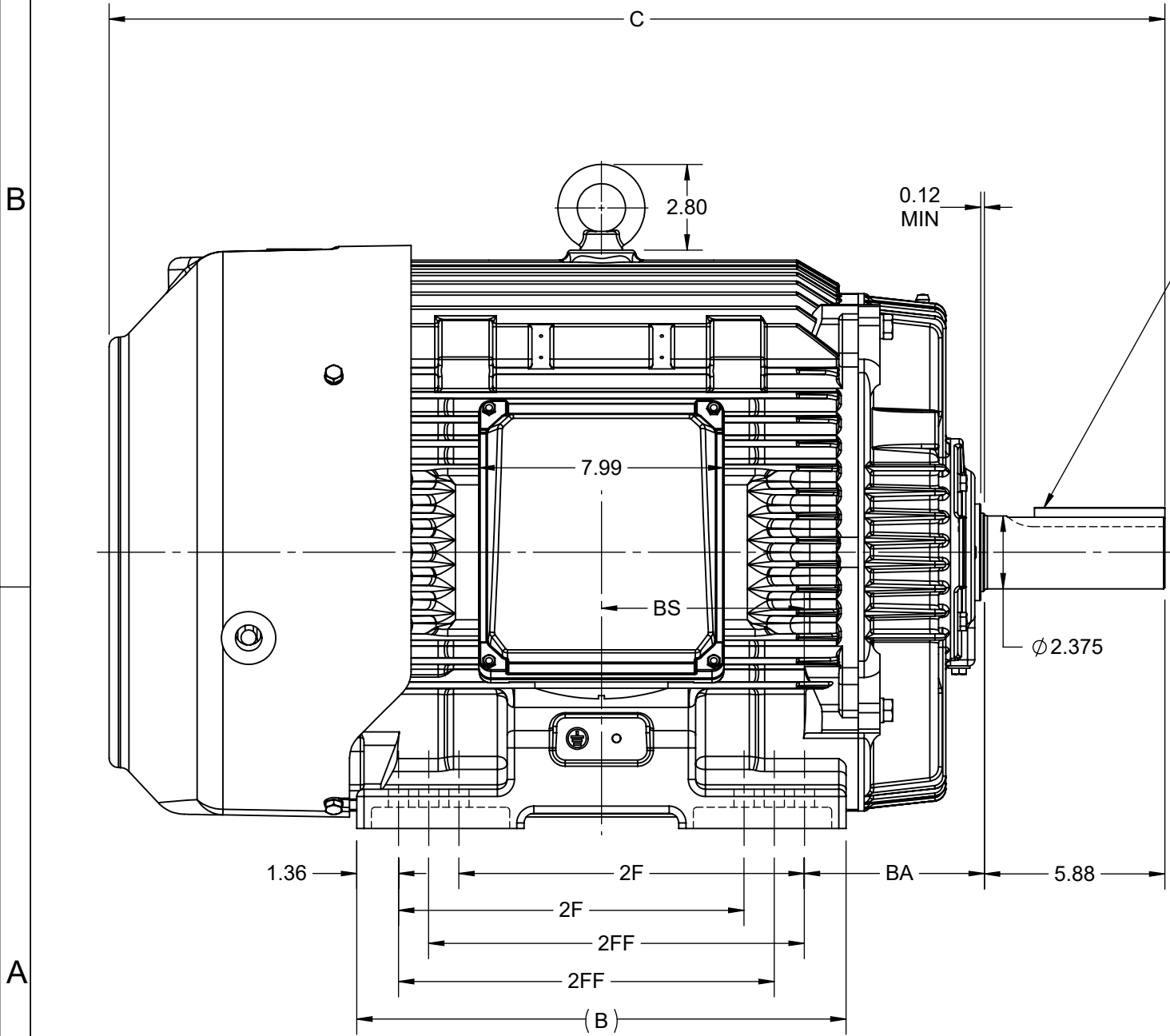
Output HP	60 Hp	Output KW	45.0 kW
Frequency	60 Hz	Voltage	460 V
Current	68.0 A	Speed	1780 rpm
Service Factor	1.15	Phase	3
Efficiency	95 %	Power Factor	87.2
Duty	Continuous	Insulation Class	H
Design Code	B	KVA Code	G
Frame	364T	Enclosure	Totally Enclosed Fan Cooled
Thermal Protection	No Protection	Ambient Temperature	40 °C
Drive End Bearing Size	NU313	Opp Drive End Bearing Size	6213
UL	Recognized	CSA	Y
CE	Y	IP Code	55
Number of Speeds	1		

### Technical Specifications

Electrical Type	Squirrel Cage Inverter Rated	Starting Method	Line Or Inverter
Poles	4	Rotation	Reversible
Resistance Main	.104 Ohms	Mounting	Rigid Base
Motor Orientation	Horizontal	Drive End Bearing	Roller
Opp Drive End Bearing	Ball	Frame Material	Cast Iron
Shaft Type	T	Shaft Diameter	2.375 in
Assembly/Box Mounting	F1/F2 CAPABLE	Inverter Load	CONSTANT 2:1/VARIABLE 10:1
Outline Drawing	SS557662-100	Connection Drawing	EE7300U


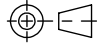
This is an uncontrolled document once printed or downloaded and is subject to change without notice. Date Created:05/11/2022

4						3					Uncontrolled	
DASH NO.	B	C	E	2E	2F	2FF	BA	BS	MOUNTING	FRAME		
100	14.96	33.40	7.00	14.00	-	11.25	5.88	6.12	F1 OR F2	364T		
200	15.94	34.40			11.25	12.25		6.62		364/365T		



DRAWING REVISION C	REVISION BY S SAHOO	REV DATE/© DATE 17/11/2020
ECO ECO-0194715	APPROVED BY GNK	DATE 17/11/2020
ECO DESCRIPTION		
DRAWING UPDATED		
COPYRIGHT (PER REVISION DATE) REGAL BELOIT AMERICA, INC. ALL RIGHTS RESERVED. PROPRIETARY AND CONFIDENTIAL INFORMATION - THIS DOCUMENT IS THE PROPERTY OF REGAL BELOIT AMERICA, INC. ("OWNER") AND CONTAINS OWNER'S PROPRIETARY INFORMATION. ANY PERSON, CORPORATION OR OTHER FIRM RECEIVING IT IS DEEMED, BY RECEIVING IT, TO AGREE THAT IT, AND/OR ANY PART OF IT, SHALL NOT BE DISCLOSED TO ANY PERSON, CORPORATION OR OTHER ENTITY, DUPLICATED, AND/OR USED, EXCEPT AS EXPRESSLY APPROVED IN WRITING IN ADVANCE BY OWNER. THIS DOCUMENT SHALL BE RETURNED TO OWNER UPON REQUEST. IT MAY BE SUBJECT TO CERTAIN RESTRICTIONS UNDER APPLICABLE EXPORT CONTROL LAWS AND REGULATIONS.		

PRIMARY DIMENSIONS ARE INCH  
mm DIMENSIONS IN [BRACKETS]  
ARE FOR REFERENCE ONLY

DRAWN BY BISWA	 Regal Beloit America, Inc.	
DATE 01/10/2018		
APPROVED BY SBD	DESCRIPTION	
DATE 01/10/2018	OUTLINE	
REFERENCE	364/365T FR-NEMA-SD & IEEE841	
THIRD ANGLE PROJECTION 	MATERIAL	PROCESS/FINISH
SIZE B	DRAWING NUMBER SS557662	SHEET 1 OF 1

## IF MOTOR HAS 9 LEADS



## IF MOTOR HAS 6 LEADS

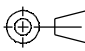


A-9806 DECAL IF CALLED FOR

## IF MOTOR HAS 12 LEADS



VIEW OF TERMINAL END

DRAWING REVISION L	REVISION BY AJW	DATE 05-04-2015	TOLERANCES UNLESS OTHERWISE SPECIFIED: <div><div>DEC.</div><div>INCH</div><div>mm</div><div>ANGLE</div></div> <div><div>.X</div><div>±0.1</div><div>[±2.5]</div><div>±7° 30"</div></div> <div><div>.XX</div><div>±0.02</div><div>[±0.51]</div></div> <div><div>XXX</div><div>±0.005</div><div>[±0.127]</div></div> <div><div>.XXXX</div><div>±0.0005</div><div>[±0.0127]</div></div> <div>REMOVE BURRS &amp; BREAK SHARP EDGES: .003/.015 [0.076/.381] X 45° CORNER FILLETS: R.02 [0.51] MACHINED SURFACES: 200<sup>✓</sup><sub>5.1</sub> INCH<sup>✓</sup> mm SHOWN IN [BRACKETS]</div>		DRAWN BY DRS	<div><div>REGAL™</div><div>Regal Beloit America, Inc.</div></div>	
ECO ECO-0077067	APPROVED BY EWH	DATE 05-05-2015			DATE 09-27-1996		
ECO DESCRIPTION UPDATED TO SOLIDWORKS			DESCRIPTION CONN DIAGRAM-EXTERNAL 3Ø SINDLE VOLTAGE				
COPYRIGHT REGAL BELOIT AMERICA, INC. ALL RIGHTS RESERVED. PROPRIETARY AND CONFIDENTIAL INFORMATION - THIS DOCUMENT IS THE PROPERTY OF REGAL BELOIT AMERICA, INC. ("OWNER") AND CONTAINS OWNER'S PROPRIETARY INFORMATION. ANY PERSON, CORPORATION OR OTHER FIRM RECEIVING IT IS DEEMED, BY RECEIVING IT, TO AGREE THAT IT, AND/OR ANY PART OF IT, SHALL NOT BE DISCLOSED TO ANY PERSON, CORPORATION OR OTHER ENTITY, DUPLICATED, AND/OR USED, EXCEPT AS EXPRESSLY APPROVED IN WRITING IN ADVANCE BY OWNER. THIS DOCUMENT SHALL BE RETURNED TO OWNER UPON REQUEST. IT MAY BE SUBJECT TO CERTAIN RESTRICTIONS UNDER APPLICABLE EXPORT CONTROL LAWS AND REGULATIONS.							
REFERENCE			MATERIAL		PROCESS/FINISH		
THIRD ANGLE PROJECTION					SIZE A	DRAWING NUMBER EE7300U	
					SHEET 1 OF 1		