

PRODUCT INFORMATION PACKET

marathon®
Motors

Model No: 364TTFC6087

Catalog No: E988A

40 HP General Purpose Motor, 3 phase, 1200 RPM, 230/460 V, 364T Frame, TEFC
General Purpose Motors



Regal and Marathon are trademarks of Regal Rexnord Corporation or one of its affiliated companies.
©2021 Regal Rexnord Corporation, All Rights Reserved. MC017097E

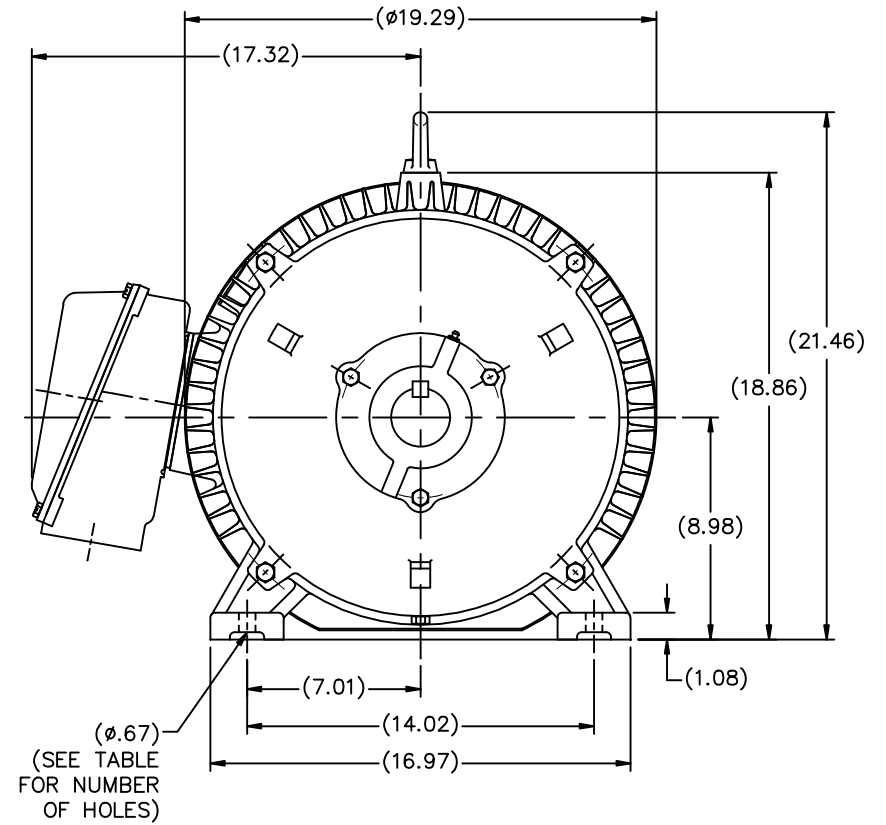
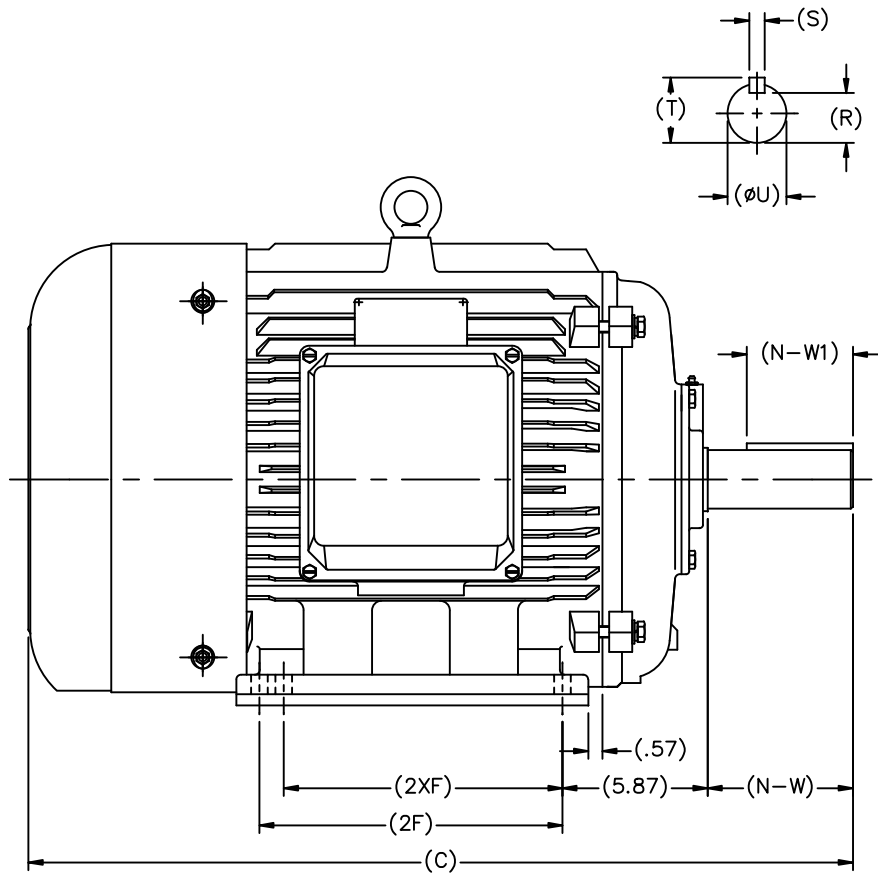
RegalRexnord

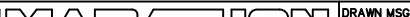
Nameplate Specifications

Output HP	40 Hp	Output KW	30.0 kW
Frequency	60 Hz	Voltage	230/460 V
Current	101.0/50.5 A	Speed	1192 rpm
Service Factor	1.15	Phase	3
Efficiency	94.1 %	Power Factor	78.5
Duty	Continuous	Insulation Class	F
Design Code	B	KVA Code	F
Frame	364T	Enclosure	Totally Enclosed Fan Cooled
Thermal Protection	No	Ambient Temperature	40 °C
Drive End Bearing Size	6313	Opp Drive End Bearing Size	6313
UL	Recognized	CSA	Y
CE	Y	IP Code	43
Number of Speeds	1		

Technical Specifications

Electrical Type	Squirrel Cage Induction Run	Starting Method	Across The Line
Poles	6	Rotation	Reversible
Resistance Main	.152 Ohms	Mounting	Rigid Base
Motor Orientation	Horizontal	Drive End Bearing	Ball
Opp Drive End Bearing	Ball	Frame Material	Cast Iron
Shaft Type	T	Overall Length	32.32 in
Shaft Diameter	2.380 in	Shaft Extension	3.75 in
Assembly/Box Mounting	F1/F2 CAPABLE		
Connection Drawing	00417203ME	Outline Drawing	SS622180ME

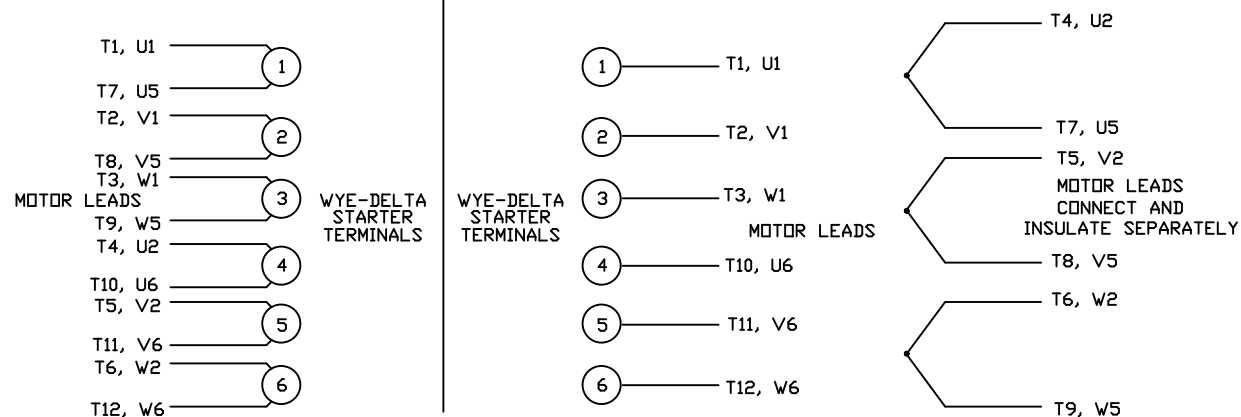


															TOLERANCES UNLESS SPECIFIED			DRAWN MSG 02-13-2007	
													DEC. INCHES		CHK ML 02-16-2207				
													.X ±.1		APPD SB 02-23-2007				
NT364TS-2	30.20	11.26	---	4	3.74	2.05	1.87	1.59	0.50	2.09	.XX ±.03		TITLE OUTLINE 360 FR. - TEFC - (REDESIGNED)		SCALE 1=5				
NT365TS-2	31.18	12.24	11.26	6							.XXX ±.005				REF				
NT364T-4, 6	32.32	11.26	---	4	5.87	4.29	2.37	2.01	0.63	2.64	.XXXX ±.0005		MAT'L		FMF HEBE				
NT365T-4, 6	33.31	12.24	11.26	6									PREV						
1											REMOVED LOGO FROM C'BOX FACE PER HEBE		JJB 4/18/2011		CHK ANG ±7°30"		FINISH		
NO.											REVISION		BY & DATE		RFP		CAD FILE SS622180ME		
THIS DRAWING IN DESIGN AND DETAIL IS OUR PROPERTY AND MUST NOT BE USED EXCEPT IN CONNECTION WITH OUR WORK ALL RIGHTS OF DESIGN AND INVENTION ARE RESERVED THIS IS AN ELECTRONICALLY GENERATED DOCUMENT - DO NOT SCALE THIS PRINT															DIST		SIZE		
																	B		
																	SS622180ME		
																	1		
FRAME	C	2F	2XF	HOLES	N-W	N-W1	ØU	R	S	T									

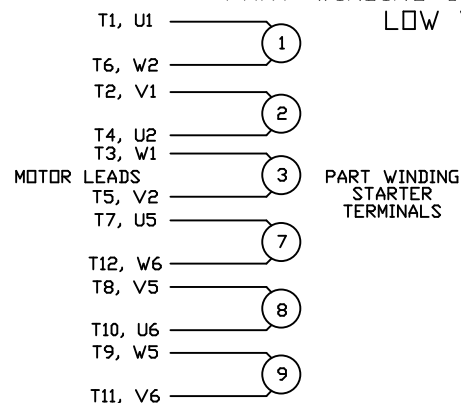
WYE - DELTA STARTING USEABLE ON 2,4 AND 6 POLE MOTORS.

LOW VOLTAGE CONNECTION

HIGH VOLTAGE CONNECTION



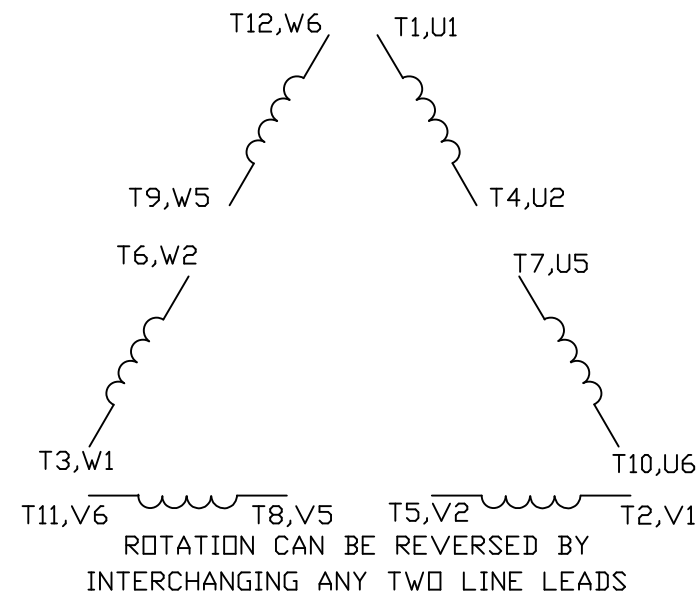
REFER TO THE WYE-DELTA STARTER CONNECTION INSTRUCTIONS FOR PROPER CONNECTION OF POWER LINES TO STARTER.

PART WINDING START USABLE ON 4 & 6 POLE MOTORS
LOW VOLTAGE CONNECTION ONLY

REFER TO THE PART WINDING STARTER INSTRUCTIONS FOR PROPER CONNECTION OF POWER LINES TO STARTER.

REFER TO THE CUTLER - HAMMER OR EQUIV. FOR PROPER SELECTION OF OVERLOAD HEATER COILS.

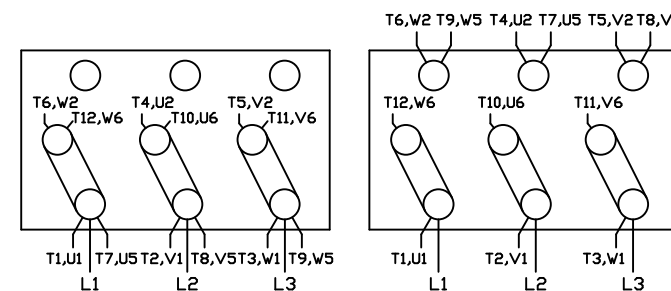
LINE LEADS



12 LEAD DELTA CONNECTION ACROSS THE LINE START
(FOR Y START DELTA RUN, REMOVE THE JUMPERS)

LOW VOLTAGE
(MUST BE REWIRED
AS SHOWN)

HIGH VOLTAGE
(FACTORY WIRED FOR HIGH
VOLTAGE AS SHOWN)



TOLERANCES
UNLESS SPECIFIED

DEC. INCHES

.X ±.1

.XX ±.01

.XXX ±.005

.XXXX ±.0005

ANG ±1/2°



TITLE DELTA - WYE CONNECTION DIAGRAM
IEC CAST IRON MOTORS

MAT'L.

FINISH

DRAWN CJW 08/28/02

CHK

APPD

SCALE 1=1

REF

FMF

PREV

NO. REVISION BY & DATE

THIS DRAWING IN DESIGN AND DETAIL IS OUR PROPERTY AND MUST NOT BE USED EXCEPT IN CONNECTION WITH OUR WORK ALL RIGHTS OF DESIGN AND INVENTION ARE RESERVED THIS IS AN ELECTRONICALLY GENERATED DOCUMENT - DO NOT SCALE THIS PRINT

RFP

DIST

CAD FILE 00417203ME

SIZE

A

DRAWING NO.

004172-03ME

REV.

CERTIFICATION DATA SHEET

Model#: 364TTFC6087 AA
 CONN. DIAGRAM: 00417203ME
 OUTLINE: SS622180ME

WINDING#: T18306022 NONE 3
 ASSEMBLY: F1/F2 CAPABLE

TYPICAL MOTOR PERFORMANCE DATA

HP	KW	SYNC. RPM	F.L. RPM	FRAME	ENCLOSURE	KVA CODE	DESIGN
40&30	30&22.4	1200	1192&992	364T	TEFC	F	B

PH	Hz	VOLTS	FL AMPS	START TYPE	DUTY	INSL	S.F	AMB°C	ELEVATION
3	60/50	230/460#190/ 380	101/50.5&92/4 6	ACROSS THE LINE	CONTINUOU S	F2	1.15/1.15	40	3300

FULL LOAD EFF: 94.1&94.1	3/4 LOAD EFF: 94.1	1/2 LOAD EFF: 93.6	GTD. EFF	ELEC. TYPE	NO LOAD AMPS
FULL LOAD PF: 78.5&78	3/4 LOAD PF: 74.5	1/2 LOAD PF: 65	93	SQ CAGE IND RUN	41 / 20.5

F.L. TORQUE	LOCKED ROTOR AMPS	L.R. TORQUE	B.D. TORQUE	F.L. RISE°C
176 LB-FT	550 / 275	330 LB-FT 188	400 LB-FT 227	65

SOUND PRESSURE @ 3 FT.	SOUND POWER	ROTOR WK^2	MAX. WK^2	SAFE STALL TIME	STARTS /HOUR	APPROX. MOTOR WGT
65 dBA	75 dBA	- LB-FT^2	- LB-FT^2	20 SEC.	-	743 LBS.

*** SUPPLEMENTAL INFORMATION ***

DE BRACKET TYPE	ODE BRACKET TYPE	MOUNT TYPE	ORIENTATION	SEVERE DUTY	HAZARDOUS LOCATION	DRIP COVER	SCREENS	PAINT
STANDARD	STANDARD	RIGID	HORIZONTAL	FALSE	NONE	FALSE	NONE	BLUE (ENAMEL)

BEARINGS		GREASE	SHAFT TYPE	SPECIAL DE	SPECIAL ODE	SHAFT MATERIAL	FRAME MATERIAL
DE	OPE						
BALL	BALL	POLYREX EM	T	NONE	NONE	1045 HOT ROLLED (C-204)	CAST IRON
6313	6313						

THERMO-PROTECTORS				THERMISTORS	CONTROL	SPACE /n HEATERS
THERMOSTATS	PROTECTORS	WDG RTDs	BRG RTDs			
NONE	NOT	NONE	NONE	NONE	FALSE	NONE VOLTS

If Inverter equals NONE, contact factory for further
information

INVERTER TORQUE: NONE
 INV. HP SPEED RANGE: NONE

ENCODER: NONE
 NONE NONE
 NONE NONE PPR

BRAKE: NONE NONE
 NONE P/N NONE
 NONE NONE
 NONE FT-LB NONE V NONE Hz

*
N
O
T
E
S
*

DATE: 06/21/2017 08:15:18 AM
 FORM 3531 REV.3 02/07/99
 ** Subject to change without notice.

Data Sheet

Date: 12/13/2018

Customer: _____

Attention: _____

Submitted by: FAREEDA DUDEKULA



364TTFC6087

Submittal

Data @ 460 V

Motor Load Data

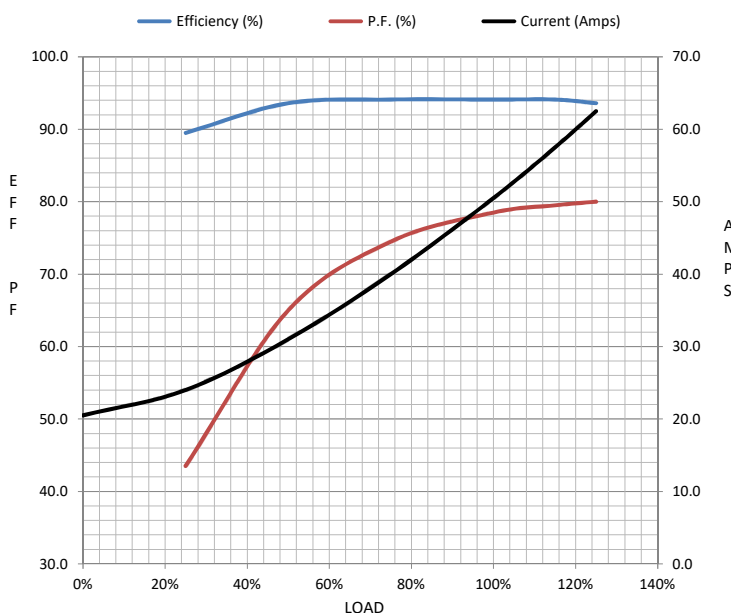
Load	0%	25%	50%	75%	100%	115%	125%	LR	
Current (Amps)	20.5	24.0	31.0	40.0	50.5	57.5	62.5	275	
Torque (ft-lb)	0.00	43.5	88.0	132	176	203	221	330	
RPM	1200	1198	1196	1194	1192	1,190	1187	0	
Efficiency (%)		89.5	93.6	94.1	94.1	94.1	93.6		
P.F. (%)	4.5	43.5	65.0	74.5	78.5	79.5	80.0	35.0	

Motor Speed Data

	LR	Pull-Up	BD	Rated	Idle
Speed (RPM)	0	600	1150	1192	1200
Current (Amps)	275	250	160	50.5	20.5
Torque (ft-lb)	330	180	400	176	0.00

Information Block

HP	40.0			
Sync. RPM	1200			
Frame	364			
Enclosure	TEFC			
Construction	TFS			
Voltage	230/460#190/380	V		
Frequency	60	Hz		
Design	B			
LR Code letter	F			
Service Factor	1.15			
Temp Rise @ FL	64	° C		
Duty	CONT			
Ambient	40	° C		
Elevation	1,000	feet		
Rotor/Shaft wk²	0.00	Lb-Ft²		
Ref Wdg	T18306022 NONE			
Sound Pressure @ 1M	65	dBA		
VFD Rating	NONE			
Outline Dwg	SS622180ME			
Conn. Diag	4172.03			
Additional Specifications:				
0				
0				
EQUIV CKT (OHMS / PHASE)				
R1	R2	X1	X2	Xm
0.0000	0.0000	0.0000	0.0000	0.0000



Speed -Torque Curve

