

PRODUCT INFORMATION PACKET

marathon®
Motors

Model No: 364TTFC6041

Catalog No: U660A

General Purpose Motors, TEFC, 60 HP, 3 Ph, 60 Hz, 575 V, 1790 RPM, 364T

General Purpose Motors



Regal and Marathon are trademarks of Regal Rexnord Corporation or one of its affiliated companies.
©2022 Regal Rexnord Corporation, All Rights Reserved. MC017097E

RegalRexnord

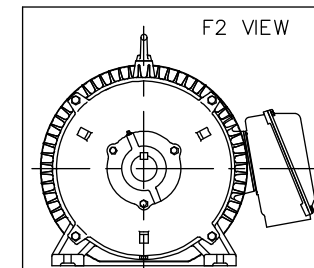
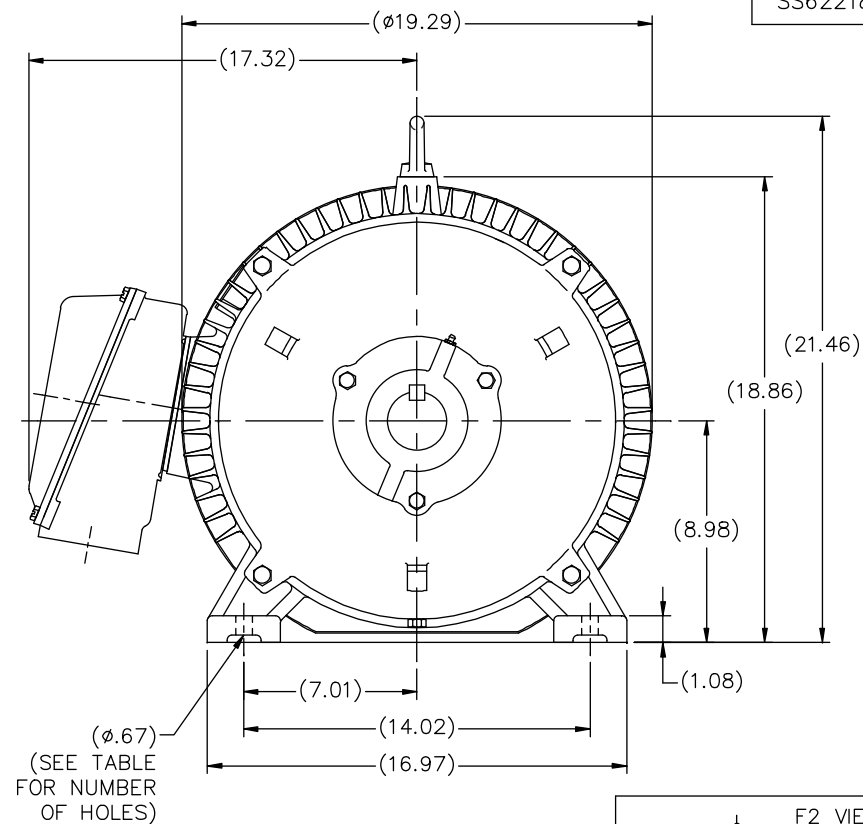
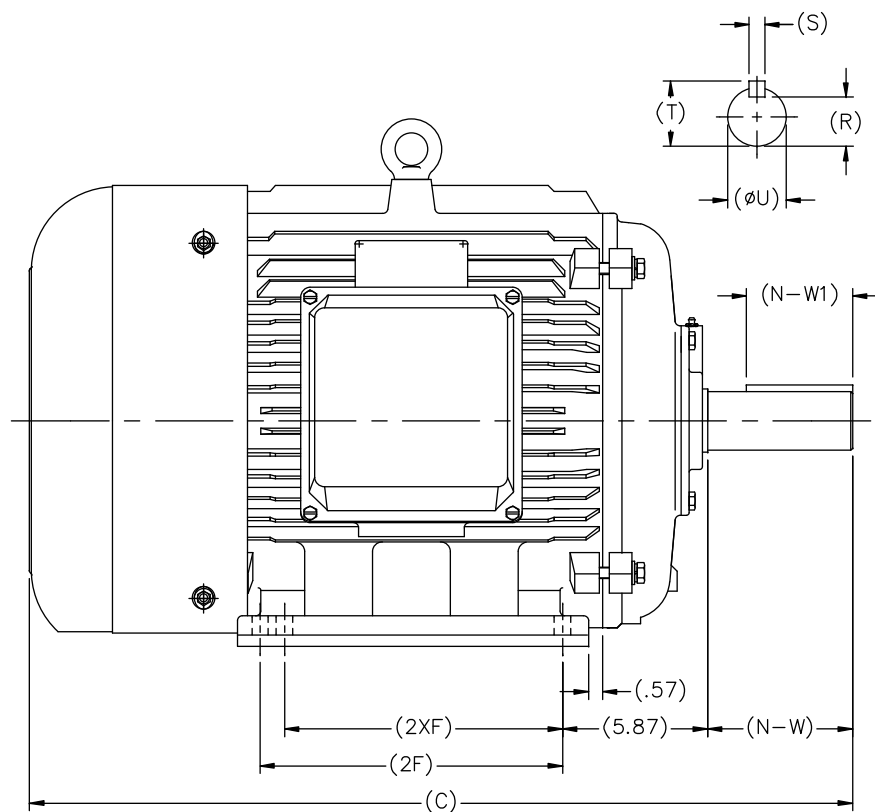
Nameplate Specifications


Output HP	60 Hp	Output KW	45.0 kW
Frequency	60 Hz	Voltage	575 V
Current	55.5 A	Speed	1790 rpm
Service Factor	1.15	Phase	3
Efficiency	95.4 %	Power Factor	84.5
Duty	Continuous	Insulation Class	F
Design Code	B	KVA Code	G
Frame	364T	Enclosure	Totally Enclosed Fan Cooled
Thermal Protection	No	Ambient Temperature	40 °C
Drive End Bearing Size	6313	Opp Drive End Bearing Size	6313
UL	Recognized	CSA	Y
CE	Y	IP Code	43
Number of Speeds	1		

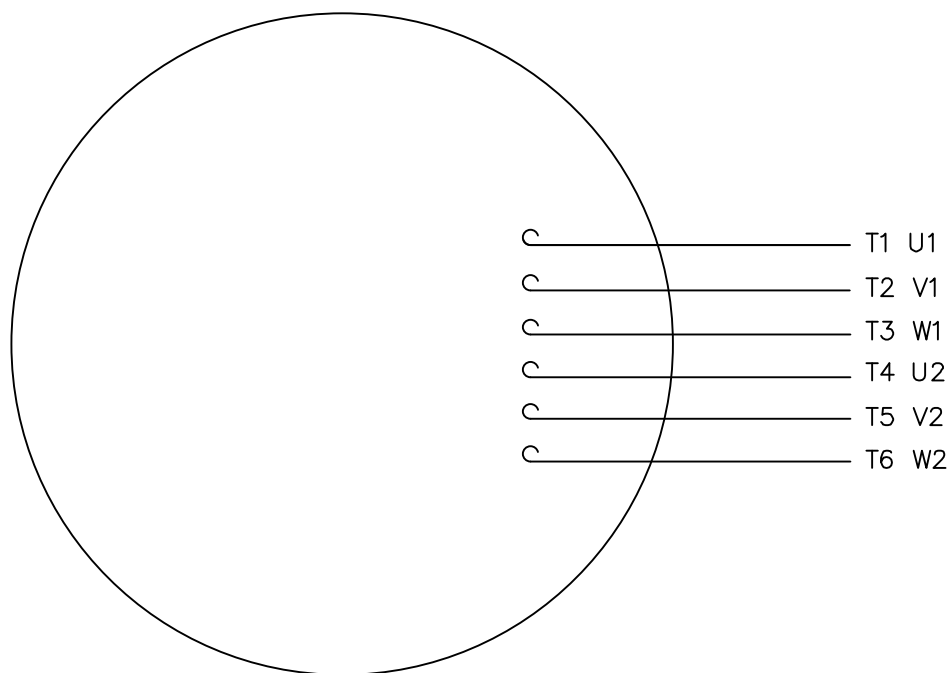
Technical Specifications

Electrical Type	Squirrel Cage Induction Run	Starting Method	Across The Line
Poles	4	Rotation	Reversible
Resistance Main	.06 Ohms	Mounting	Rigid Base
Motor Orientation	Horizontal	Drive End Bearing	Ball
Opp Drive End Bearing	Ball	Frame Material	Cast Iron
Shaft Type	T	Overall Length	32.32 in
Shaft Diameter	2.380 in	Shaft Extension	3.74 in
Assembly/Box Mounting	F1/F2 CAPABLE		
Outline Drawing	SS622180LN	Connection Drawing	005190.01ME

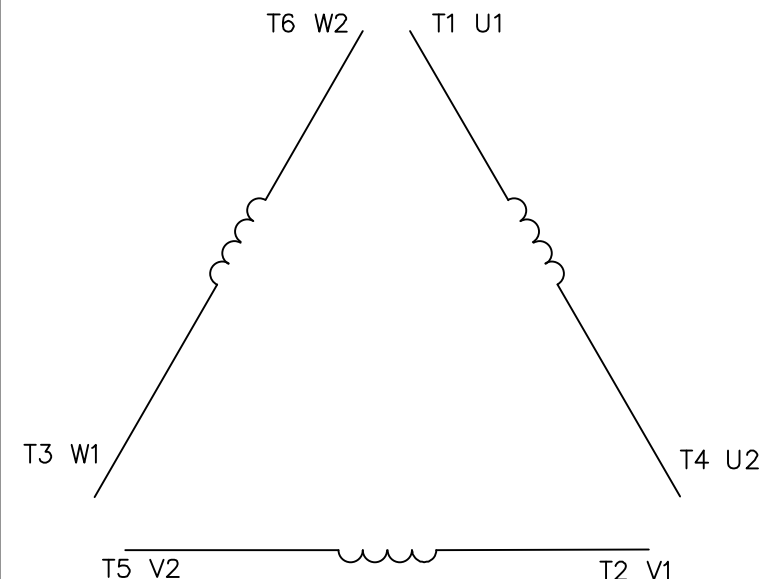
This is an uncontrolled document once printed or downloaded and is subject to change without notice. Date Created:03/02/2022




														TOLERANCES UNLESS SPECIFIED				DRAWN MSG 02-13-2007			
												DEC. INCHES		CHK ML 02-16-2207							
												.X ±.1		APPD SB 02-23-2007							
												.XX ±.03 .XXX ±.005		TITLE OUTLINE 360 FR. — TEFC — (REDESIGNED)				SCALE 1=5			
NT364TS-2	30.20	11.26	---	4	3.74	2.05	1.87	1.59	0.50	2.09			.XXX ±.005				REF				
NT365TS-2	31.18	12.24	11.26	6																	
NT364T-4, 6	32.32	11.26	---	4	5.87	4.29	2.37	2.01	0.63	2.64	1 ADDED F2 VIEW		TJW 7/9/2013		SB .XXXX ±.0005		MAT'L				
NT365T-4, 6	33.31	12.24	11.26	6							NO.		REVISION		BY & DATE		CHK ANG ±7'30"		FINISH		PREV
THIS DRAWING IN DESIGN AND DETAIL IS OUR PROPERTY AND MUST NOT BE USED EXCEPT IN CONNECTION WITH OUR WORK ALL RIGHTS OF DESIGN AND INVENTION ARE RESERVED THIS IS AN ELECTRONICALLY GENERATED DOCUMENT — DO NOT SCALE THIS PRINT												RFP		CAD FILE SS622180LN		SIZE	DRAWING NO.	PAGE	OF	REV.	
FRAME C 2F 2XF HOLES N-W N-W1 ØU R S T												DIST				B	SS622180LN		1		



LINE LEADS



	L1	L2	L3	JOIN
START (WYE)	T1 U1	T2 V1	T3 U2	(T4,T5,T6) (U2,V2,W2)
RUN (DELTA)	(T1,T6) (U1,W2)	(T2,T4) (V1,U2)	(T3,T5) (W1,V2)	

				TOLERANCES UNLESS SPECIFIED			DRAWN PG 05/07/82		
				DEC.	INCHES		CHK		
				.X	±.1		APPD TEM 05/07/82		
03	ADDED IEC DESIGNATIONS	MOL 04/27/12		.XX	±.01		SCALE 1=1		
02	REMOVED OBSOLETE STATUS	KJH 06/28/99		.XXX	±.005	STAR START – DELTA RUN		REF	
01	REDRAWN ON CAD	DBT 05/30/97		.XXXX	±.0005	MAT'L Y–CONNECTED START – DELTA CONNECTED RUN		FMF	
NO.	REVISION	BY & DATE	CHK	ANG	±1/2"	FINISH SINGLE VOLTAGE		PREV	
THIS DRAWING IN DESIGN AND DETAIL IS OUR PROPERTY AND MUST NOT BE USED EXCEPT IN CONNECTION WITH OUR WORK ALL RIGHTS OF DESIGN AND INVENTION ARE RESERVED THIS IS AN ELECTRONICALLY GENERATED DOCUMENT – DO NOT SCALE THIS PRINT			RFP		CAD FILE 00519001ME		SIZE	DRAWING NO.	REV.
			DIST				A	005190–01ME	03

CERTIFICATION DATA SHEET

Model#: 364TTFC6041 AA

WINDING#: T18304019 NONE 4

CONN. DIAGRAM: 5190.01ME

ASSEMBLY: F1/F2 CAPABLE

OUTLINE: SS622180LN

TYPICAL MOTOR PERFORMANCE DATA

HP	KW	SYNC. RPM	F.L. RPM	FRAME	ENCLOSURE	KVA CODE	DESIGN
60	45	1800	1790	364T	TEFC	G	B

PH	Hz	VOLTS	FL AMPS	START TYPE	DUTY	INSL	S.F	AMB°C	ELEVATION
3	60	575	55.5	ACROSS THE LINE	CONTINUOUS	F2	1.15	40	3300

FULL LOAD EFF: 95.4	3/4 LOAD EFF: 95	1/2 LOAD EFF: 94.1	GTD. EFF	ELEC. TYPE	NO LOAD AMPS
FULL LOAD PF: 84.5	3/4 LOAD PF: 81.5	1/2 LOAD PF: 73.5	94.5	SQ CAGE IND RUN	19.2

F.L. TORQUE	LOCKED ROTOR AMPS	L.R. TORQUE	B.D. TORQUE	F.L. RISE°C
176 LB-FT	348	300 LB-FT 170	500 LB-FT 284	60

SOUND PRESSURE @ 3 FT.	SOUND POWER	ROTOR WK^2	MAX. WK^2	SAFE STALL TIME	STARTS /HOUR	APPROX. MOTOR WGT
- dBA	- dBA	- LB-FT^2	- LB-FT^2	20 SEC.	-	888 LBS.

*** SUPPLEMENTAL INFORMATION ***

DE BRACKET TYPE	ODE BRACKET TYPE	MOUNT TYPE	ORIENTATION	SEVERE DUTY	HAZARDOUS LOCATION	DRIP COVER	SCREENS	PAINT
STANDARD	STANDARD	RIGID	HORIZONTAL	FALSE	NONE	FALSE	NONE	BLUE (ENAMEL)

BEARINGS		GREASE	SHAFT TYPE	SPECIAL DE	SPECIAL ODE	SHAFT MATERIAL	FRAME MATERIAL
DE	OPE						
BALL	BALL						
6313	6313	POLYREX EM	T	NONE	NONE	1045 HOT ROLLED (C-204)	CAST IRON

THERMO-PROTECTORS				THERMISTORS	CONTROL	SPACE /n HEATERS
THERMOSTATS	PROTECTORS	WDG RTDs	BRG RTDs			
NONE	NOT	NONE	NONE	NONE	FALSE	NONE VOLTS

If Inverter equals NONE, contact factory for further information

* N O T E S *	INVERTER TORQUE: NONE		
	INV. HP SPEED RANGE: NONE		
	ENCODER: NONE		
	NONE NONE		
	NONE NONE PPR		
	BRAKE: NONE NONE		
	NONE P/N NONE		
	NONE NONE		
	- FT-LB		NONE V
			NONE Hz

DATE: 06/21/2017 08:13:34 AM

FORM 3531 REV.3 02/07/99

** Subject to change without notice.

Data Sheet

Date: 12/12/2018

Customer: _____

Attention: _____

Submitted by: FAREEDA DUDEKULA



364TTC6041

Submittal

Data @ 575 V

Motor Load Data

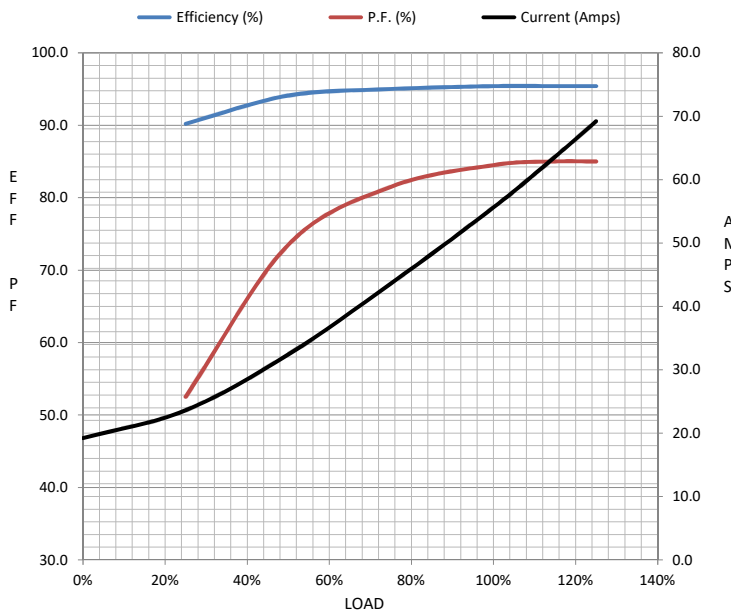
Load	0%	25%	50%	75%	100%	115%	125%	LR	
Current (Amps)	19.2	23.6	32.4	43.6	55.6	63.6	69.2	348	
Torque (ft-lb)	0.00	44.0	88.0	132	176	203	221	300	
RPM	1800	1798	1795	1792	1790	1,787	1785	0	
Efficiency (%)		90.2	94.1	95.0	95.4	95.4	95.4		
P.F. (%)	5.5	52.5	73.5	81.5	84.5	85.0	85.0	29.0	

Motor Speed Data

	LR	Pull-Up	BD	Rated	Idle
Speed (RPM)	0	900	1700	1790	1800
Current (Amps)	348	320	220	55.6	19.2
Torque (ft-lb)	300	275	500	176	0.00

Information Block

HP	60.0			
Sync. RPM	1800			
Frame	364			
Enclosure	TEFC			
Construction	TFS			
Voltage	575 V			
Frequency	60 Hz			
Design	A			
LR Code letter	G			
Service Factor	1.15			
Temp Rise @ FL	55 ° C			
Duty	CONT			
Ambient	40 ° C			
Elevation	1,000 feet			
Rotor/Shaft wk²	0.00 Lb-Ft²			
Ref Wdg	T18304019 NONE			
Sound Pressure @ 1M	999 dBA			
VFD Rating	NONE			
Outline Dwg	SS622180LN			
Conn. Diag	5190.01ME			
Additional Specifications:				
0				
0				
EQUIV CKT (OHMS / PHASE)				
R1	R2	X1	X2	Xm
0.0000	0.0000	0.0000	0.0000	0.0000



Speed -Torque Curve

