

PRODUCT INFORMATION PACKET

Model No: 364TTDS7117

Catalog No: M828

Other Purpose Motor, 30 HP, 3 Ph, 60 Hz, 230/460 V, 900 RPM, 364HPV Frame, DP

Regal and are trademarks of Regal Rexnord Corporation or one of its affiliated companies.
©2022 Regal Rexnord Corporation, All Rights Reserved. MC017097E

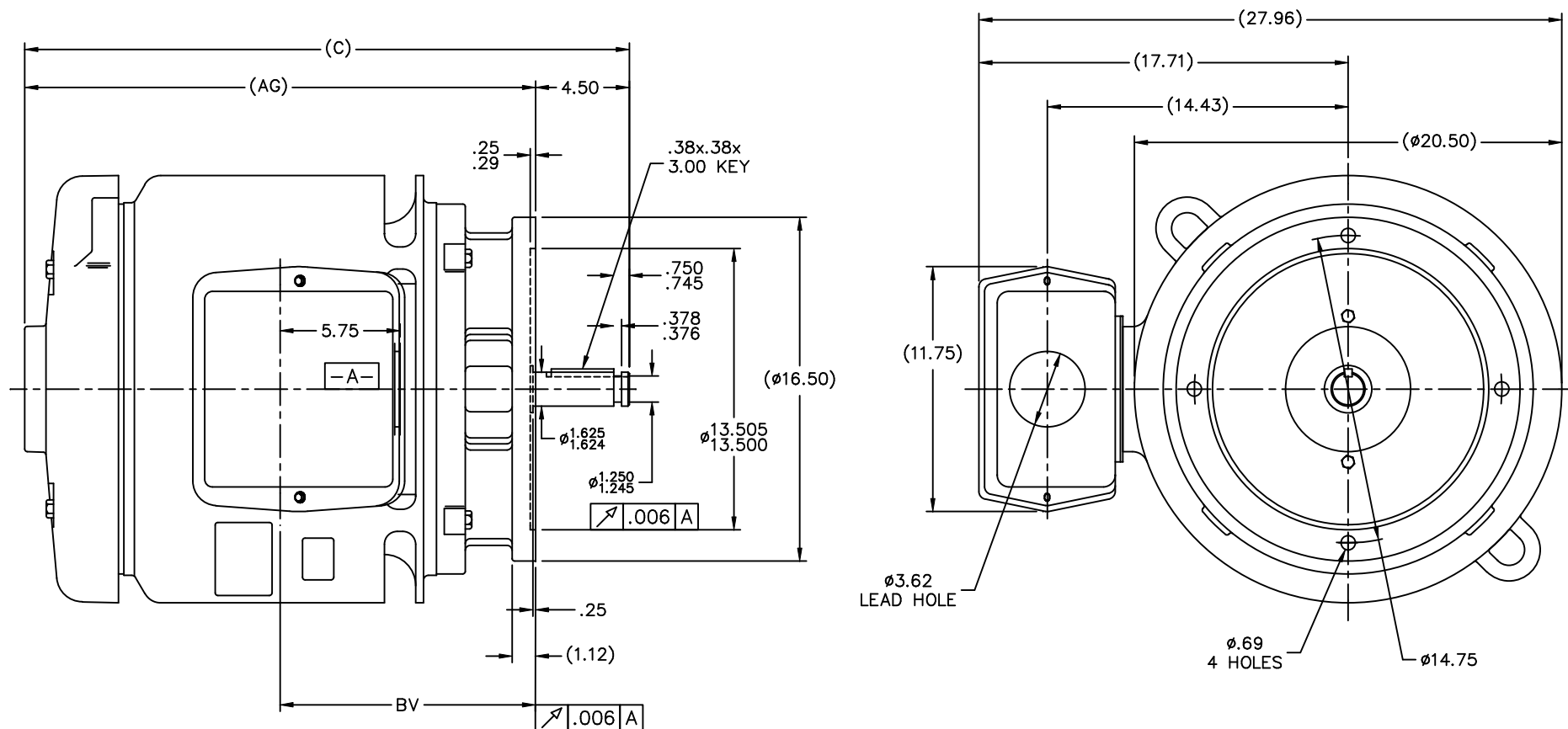


Nameplate Specifications

| | | | |
|------------------------|---------------|----------------------------|------------|
| Output HP | 30 Hp | Output KW | 22.4 kW |
| Frequency | 60 Hz | Voltage | 230/460 V |
| Current | 86.0/43.0 A | Speed | 885 rpm |
| Service Factor | 1.15 | Phase | 3 |
| Efficiency | 89.5 % | Power Factor | 74 |
| Duty | Continuous | Insulation Class | B |
| Design Code | B | KVA Code | E |
| Frame | 364HPV | Enclosure | Drip Proof |
| Thermal Protection | No Protection | Ambient Temperature | 40 °C |
| Drive End Bearing Size | 6312 | Opp Drive End Bearing Size | 6312 |
| UL | Recognized | CSA | Y |
| CE | Y | IP Code | 12 |
| Number of Speeds | 1 | | |

Technical Specifications

| | | | |
|-----------------------|-----------------------------|-----------------------|-----------------|
| Electrical Type | Squirrel Cage Induction Run | Starting Method | Across The Line |
| Poles | 8 | Rotation | Reversible |
| Resistance Main | .47 Ohms | Mounting | Round |
| Motor Orientation | Shaft Down | Drive End Bearing | Ball |
| Opp Drive End Bearing | Ball | Frame Material | Cast Iron |
| Shaft Type | HP | Overall Length | 29.00 in |
| Frame Length | 15.00 in | Shaft Diameter | 1.625 in |
| Shaft Extension | 4.5 in | Assembly/Box Mounting | F1/F2 CAPABLE |
| Outline Drawing | B-SS503458-1500 | Connection Drawing | A-EE7308 |



NOTES:

1. CONDUIT BOX CAN BE ROTATED IN 90° STEPS.
2. NAMEPLATES TO BE READ FROM SHAFT EXT. END OF MOTOR.

| | | | | | TOLERANCES UNLESS SPECIFIED | | MARATHON ELECTRIC | DRAWN DJK 02-26-1993 | | |
|--|--|--|--|--|--|--------|-----------------------------|----------------------|-------------|------------|
| | | | | | DEC. | INCHES | | CHK | ML | 03-01-1993 |
| | | | | | .X | ±.1 | TITLE OUTLINE | APPD TB 03-01-1993 | | |
| | | | | | .XX | ±.03 | | SCALE 1=5 | | |
| | | | | | .XXX | ±.005 | 360HP FR. - DR.PR. - P'BASE | REF | | |
| | | | | | .XXXX | ±.0005 | | MAT'L | | |
| | | | | | CHK | ANG | FINISH | PREV | | |
| | | | | | RFP | ±7'30" | CAD FILE ss503458 | SIZE | DRAWING NO. | PAGE OF |
| | | | | | DIST | WA | | B | SS503458 | 10 |
| | | | | | THIS DRAWING IN DESIGN AND DETAIL IS OUR PROPERTY AND MUST NOT BE USED EXCEPT IN CONNECTION WITH OUR WORK ALL RIGHTS OF DESIGN AND INVENTION ARE RESERVED THIS IS AN ELECTRONICALLY GENERATED DOCUMENT - DO NOT SCALE THIS PRINT | | | | | |



| NO. | REVISION | BY & DATE | CHK | ANG | TOLERANCES UNLESS SPECIFIED | | DRAWN RM | 11/20/1990 |
|--|--|----------------|-----|-------|--------------------------------|-----------------|----------|--------------------------|
| | | | | | DEC. | INCHES | | |
| 5 | CHG TO REGAL LOGO | SL 09/10/2015 | AB | | | | CHK | ML 11/21/1990 |
| 4 | REVISED IEC NOTATIONS | MSG 11/15/2011 | CMN | .X | ±.1 | | APPD | SAS 04/24/2003 |
| 3 | ADDED IEC NOTATIONS... (U1), (V1) ETC. MU95194 | MSG 5/10/2010 | MJS | .XX | ±.02 | | SCALE | 1=1 |
| 2 | ADDED THE OPTIONAL CORD CONNECTION MU46318 | RDH 04/24/2003 | DRS | .XXX | ±.005 | | REF | |
| 1 | REDRAWN | RM 11/20/1990 | | .XXXX | ±.0005 | | FMF | |
| | | | | | ±7'30" | | PREV | |
| THIS DRAWING IN DESIGN AND DETAIL IS OUR PROPERTY AND MUST NOT BE USED EXCEPT IN CONNECTION WITH OUR WORK ALL RIGHTS OF DESIGN AND INVENTION ARE RESERVED THIS IS AN ELECTRONICALLY GENERATED DOCUMENT - DO NOT SCALE THIS PRINT | | | | | RFP | CAD FILE ee7308 | SIZE | DRAWING NO. PAGE OF REV. |
| | | | | | DIST WP | | A | EE7308 5 |