

PRODUCT INFORMATION PACKET



Model No: 364TSTFS14505
Catalog No: 364TSTFS14505
50,3000,TEFC,364TSC,3/50/380-400

Regal and Marathon are trademarks of Regal Rexnord Corporation or one of its affiliated companies.
©2023 Regal Rexnord Corporation, All Rights Reserved. MC017097E



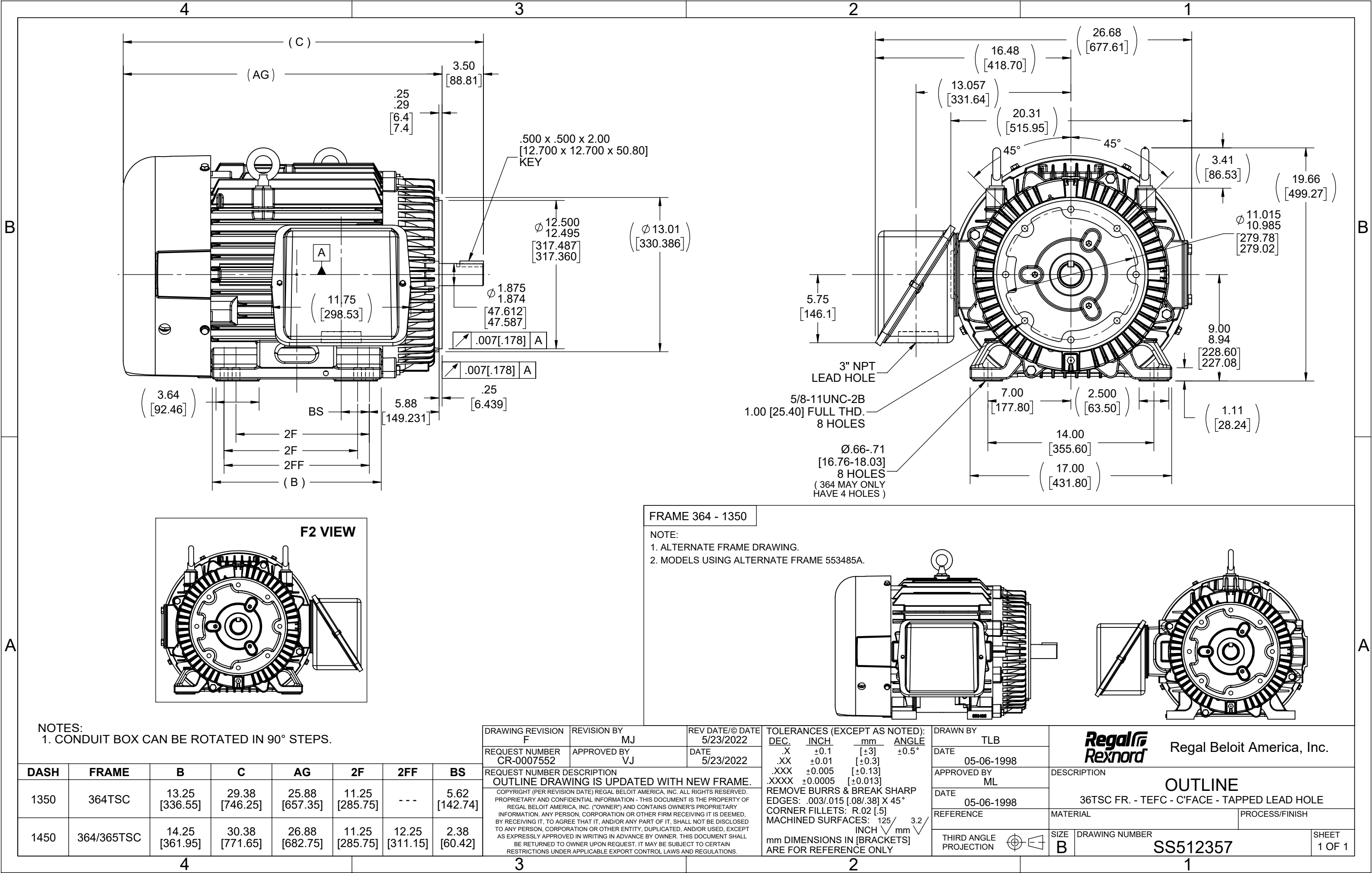
Nameplate Specifications

Phase	3	Output HP	50 Hp
Output KW	37.0 kW	Voltage	380 V
Speed	2955 rpm	Service Factor	1.15
Frame	364TSC	Enclosure	Totally Enclosed Fan Cooled
Thermal Protection	Thermostat	Efficiency	92.5 %
Ambient Temperature	40 °C	Frequency	50 Hz
Current	70.0 A	Power Factor	87
Duty	Continuous	Insulation Class	F
Design Code	A	KVA Code	G
Drive End Bearing Size	6312	Opp Drive End Bearing Size	6312
UL	Recognized	CSA	Y
CE	Y	IP Code	55
Number of Speeds	1		

Technical Specifications

Electrical Type	Squirrel Cage Inverter Rated	Starting Method	Line Or Inverter
Poles	2	Rotation	Reversible
Resistance Main	.11 Ohms	Mounting	Rigid Base
Motor Orientation	Horizontal	Drive End Bearing	Ball
Opp Drive End Bearing	Ball	Frame Material	Cast Iron
Shaft Type	TS	Shaft Diameter	1.875 in
Assembly/Box Mounting	F1/F2 CAPABLE	Inverter Load	VARIABLE 10:1
Outline Drawing	B-SS512357-1350	Connection Drawing	A-EE7300S

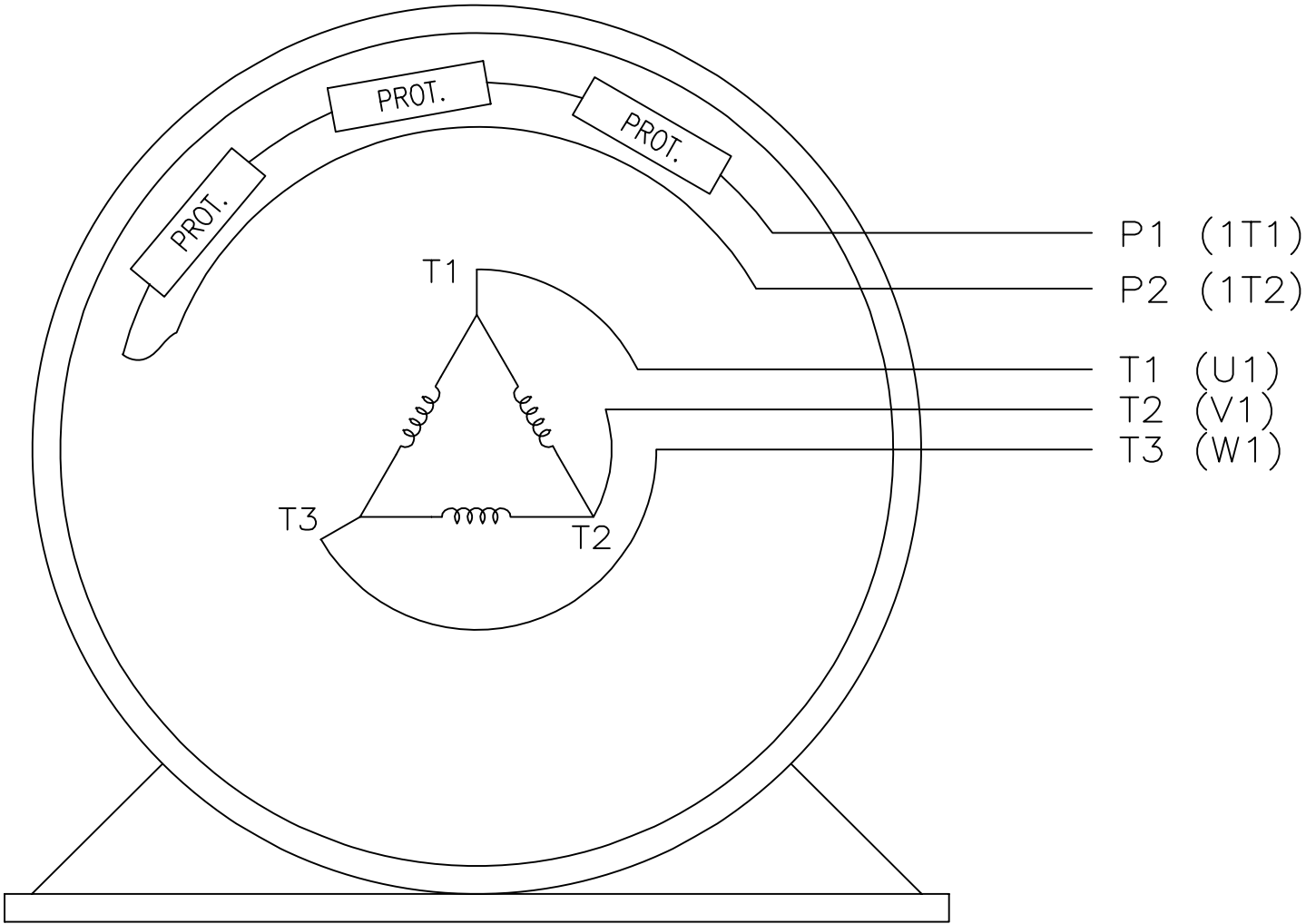
This is an uncontrolled document once printed or downloaded and is subject to change without notice. Date Created:04/24/2023



EE7300S

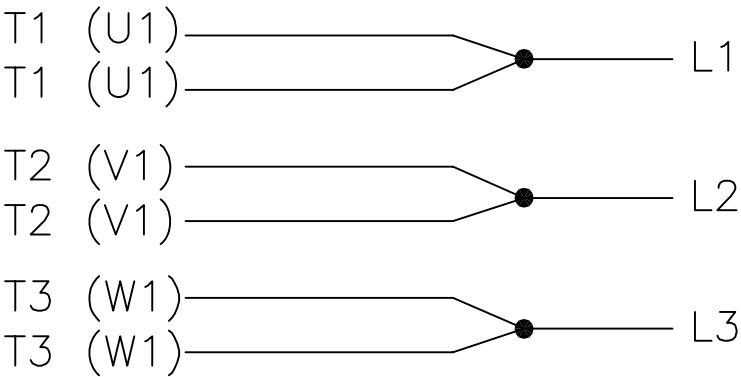
THREE PHASE – SINGLE VOLTAGE MOTOR

TO REVERSE ROTATION:
INTERCHANGE ANY TWO LINE
LEAD CONNECTIONS




P1 (1T1)
P2 (1T2)
T1 (U1)
T2 (V1)
T3 (W1)

IF MOTOR HAS MULTIPLE
T'S PER LEAD CONNECT
TOGETHER LIKE T'S



A-9806 DECAL

VIEW OF TERMINAL END

				TOLERANCES UNLESS SPECIFIED		 REGAL-BELOIT CORPORATION	DRAWN KL 12-15-1999		
				DEC.	INCHES		CHK DJK 12-15-1999		
F	UPDATED TITLE BLOCK	HV 02-27-2014	EWB	.X	± -		APPD DJK 12-15-1999		
3	REMOVED "N.C." FROM PROT.'S MU61770	JJB 08-02-2010		.XX	± -	TITLE CONNECTION DIAGRAM – EXTERNAL SINGLE VOLTAGE 3Ø MOTOR	SCALE 1=1		
2	ADDED IEC MARKINGS MU61770	KL 09-16-2004	EAB	.XXX	± -		REF		
1	NEW DRAWING	KL 12-16-1999		.XXXX	± -	MAT'L.	FMF		
NO.	REVISION	BY & DATE	CHK	ANG	± -	FINISH	PREV		
THIS DRAWING IN DESIGN AND DETAIL IS OUR PROPERTY AND MUST NOT BE USED EXCEPT IN CONNECTION WITH OUR WORK ALL RIGHTS OF DESIGN AND INVENTION ARE RESERVED THIS IS AN ELECTRONICALLY GENERATED DOCUMENT – DO NOT SCALE THIS PRINT				RFP		CAD FILE ee7300s	SIZE A	DRAWING NO. EE7300S	PAGE OF F
				DIST WA-LB-SB					