

# PRODUCT INFORMATION PACKET

**marathon®**  
Motors

Model No: 364TSTFC6006

Catalog No: E015

60 HP General Purpose Motor, 3 phase, 3600 RPM, 575 V, 364TS Frame, TEFC  
General Purpose Motors



Regal and Marathon are trademarks of Regal Rexnord Corporation or one of its affiliated companies.  
©2021 Regal Rexnord Corporation, All Rights Reserved. MC017097E

**RegalRexnord**

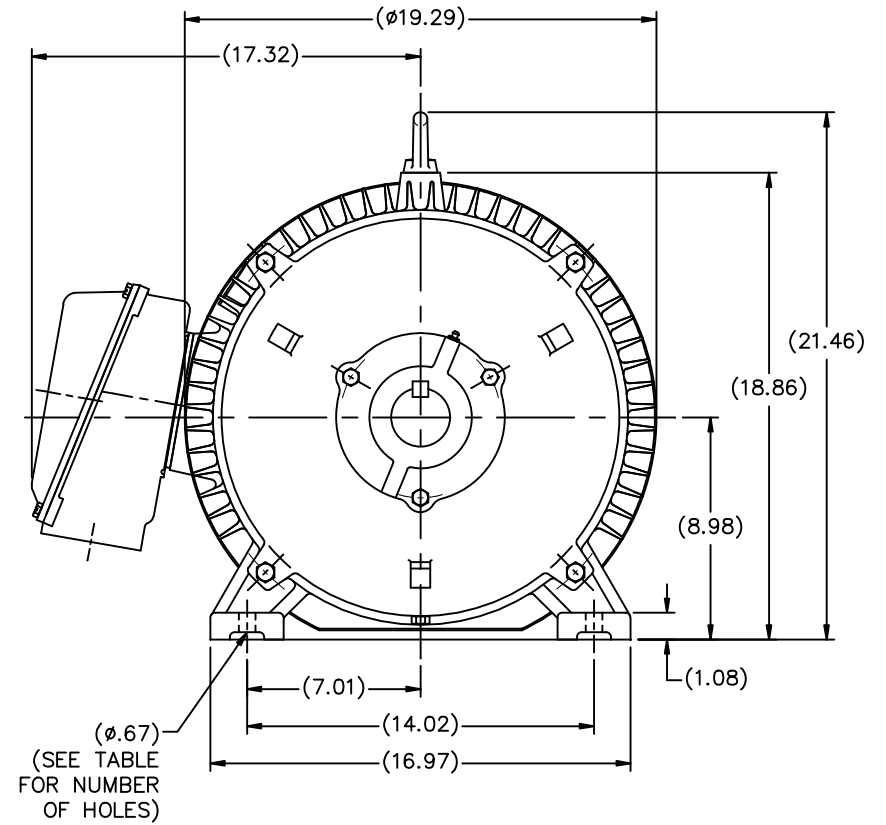
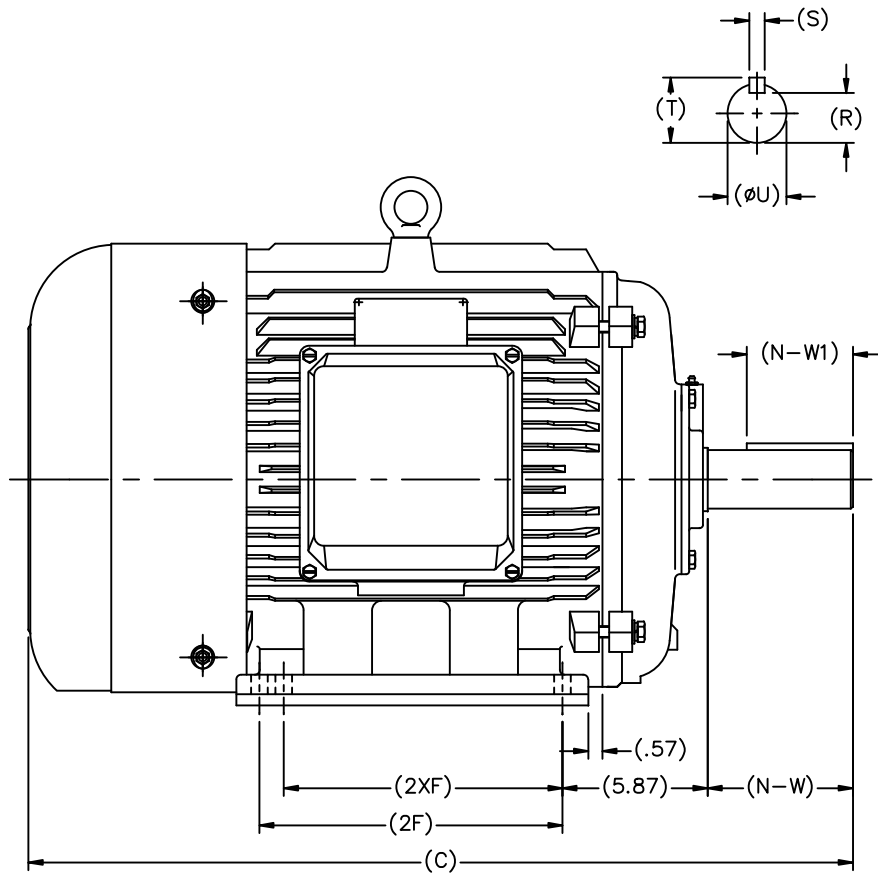
**Nameplate Specifications**

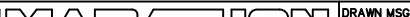
Output HP	<b>60 Hp</b>	Output KW	<b>45.0 kW</b>
Frequency	<b>60 Hz</b>	Voltage	<b>575 V</b>
Current	<b>53.5 A</b>	Speed	<b>3570 rpm</b>
Service Factor	<b>1.15</b>	Phase	<b>3</b>
Efficiency	<b>94.1 %</b>	Power Factor	<b>88.5</b>
Duty	<b>Continuous</b>	Insulation Class	<b>F</b>
Design Code	<b>B</b>	KVA Code	<b>F</b>
Frame	<b>364TS</b>	Enclosure	<b>Totally Enclosed Fan Cooled</b>
Thermal Protection	<b>No</b>	Ambient Temperature	<b>40 °C</b>
Drive End Bearing Size	<b>6313</b>	Opp Drive End Bearing Size	<b>6313</b>
UL	<b>Recognized</b>	CSA	<b>Y</b>
CE	<b>Y</b>	IP Code	<b>43</b>
Number of Speeds	<b>1</b>		

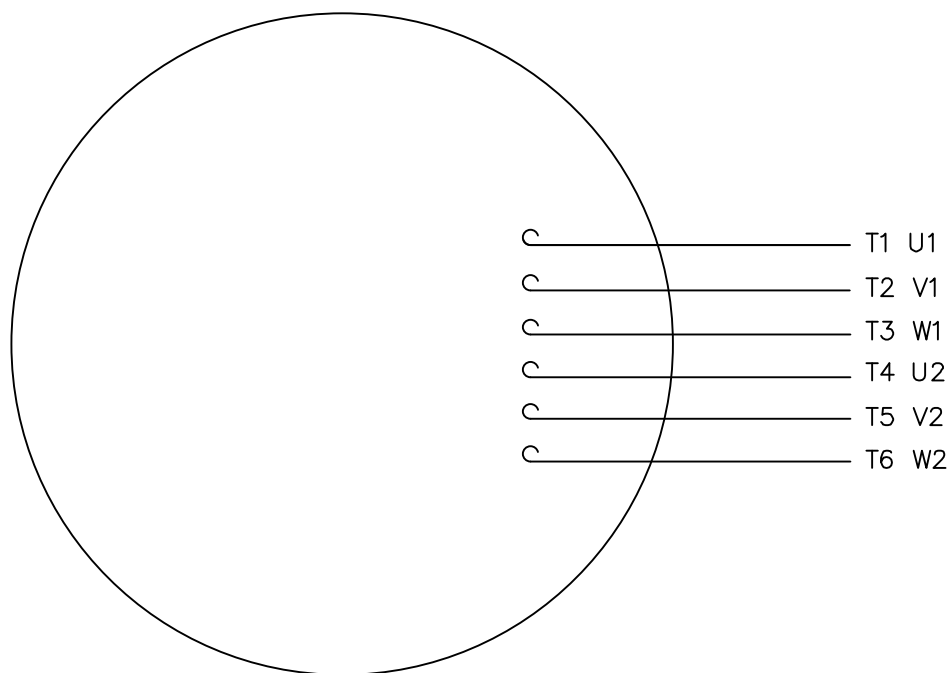
**Technical Specifications**

Electrical Type	<b>Squirrel Cage Inverter Rated</b>	Starting Method	<b>Wye Start Delta Run Or Inverter</b>
Poles	<b>2</b>	Rotation	<b>Reversible</b>
Resistance Main	<b>.0732 Ohms</b>	Mounting	<b>Rigid Base</b>
Motor Orientation	<b>Horizontal</b>	Drive End Bearing	<b>Ball</b>
Opp Drive End Bearing	<b>Ball</b>	Frame Material	<b>Cast Iron</b>
Shaft Type	<b>TS</b>	Overall Length	<b>31.18 in</b>
Shaft Diameter	<b>1.875 in</b>	Shaft Extension	<b>3.75 in</b>
Assembly/Box Mounting	<b>F1/F2 Capable</b>		
Outline Drawing	<b>SS622180ME</b>	Connection Drawing	<b>00519001ME</b>

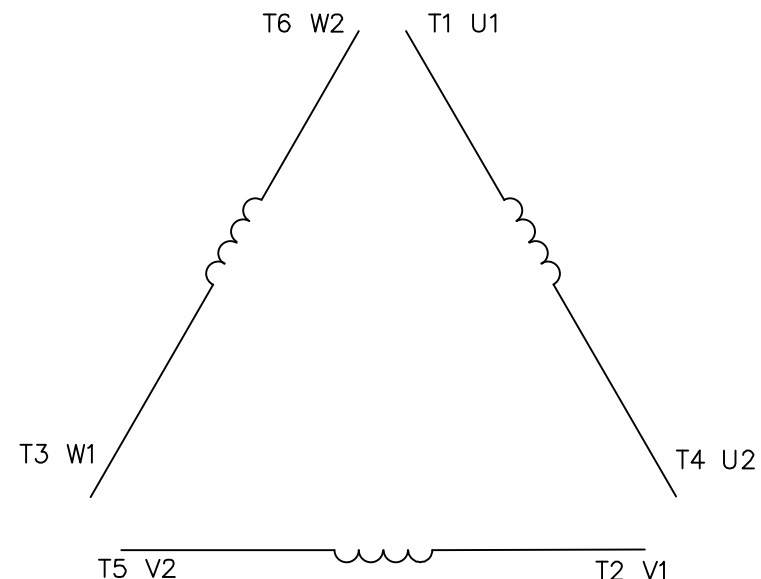
This is an uncontrolled document once printed or downloaded and is subject to change without notice. Date Created:10/12/2021




															TOLERANCES UNLESS SPECIFIED			DRAWN MSG 02-13-2007														
													DEC. INCHES		CHK ML 02-16-2207																	
													.X ±.1		APPD SB 02-23-2007																	
													.XX ±.03		TITLE OUTLINE 360 FR. – TEFC – (REDESIGNED)			SCALE 1=5														
													.XXX ±.005					REF														
											1 REMOVED LOGO FROM C'BOX FACE PER HEBE		JJB 4/18/2011		.XXXX ±.0005		MAT'L			FMF HEBE												
											NO. REVISION		BY & DATE		CHK ANG ±7°30"		FINISH			PREV												
											THIS DRAWING IN DESIGN AND DETAIL IS OUR PROPERTY AND MUST NOT BE USED EXCEPT IN CONNECTION WITH OUR WORK ALL RIGHTS OF DESIGN AND INVENTION ARE RESERVED THIS IS AN ELECTRONICALLY GENERATED DOCUMENT – DO NOT SCALE THIS PRINT											RFP		CAD FILE SS622180ME			SIZE B		DRAWING NO. PAGE OF		REV. 1	



## LINE LEADS



	L1	L2	L3	JOIN
START (WYE)	T1 U1	T2 V1	T3 U2	(T4,T5,T6) (U2,V2,W2)
RUN (DELTA)	(T1,T6) (U1,W2)	(T2,T4) (V1,U2)	(T3,T5) (W1,V2)	

				TOLERANCES UNLESS SPECIFIED					DRAWN PG 05/07/82		
				DEC.	INCHES				CHK		
				.X	±.1				APPD TEM 05/07/82		
03	ADDED IEC DESIGNATIONS	MOL 04/27/12		.XX	±.01	TITLE EXTERNAL WIRING DIAGRAM STAR START – DELTA RUN			SCALE 1=1		
02	REMOVED OBSOLETE STATUS	KJH 06/28/99		.XXX	±.005				REF		
01	REDRAWN ON CAD	DBT 05/30/97		.XXXX	±.0005	MAT'L. Y–CONNECTED START – DELTA CONNECTED RUN			FMF		
NO.	REVISION	BY & DATE	CHK	ANG	±1/2"	FINISH SINGLE VOLTAGE			PREV		
THIS DRAWING IN DESIGN AND DETAIL IS OUR PROPERTY AND MUST NOT BE USED EXCEPT IN CONNECTION WITH OUR WORK ALL RIGHTS OF DESIGN AND INVENTION ARE RESERVED THIS IS AN ELECTRONICALLY GENERATED DOCUMENT – DO NOT SCALE THIS PRINT				RFP		CAD FILE 00519001ME		SIZE	DRAWING NO.		REV.
				DIST				A	005190–01ME		03

## CERTIFICATION DATA SHEET

Model#: 364TSTFC6006 AA

WINDING#: T18302021 NONE 4

CONN. DIAGRAM: 00519001ME

ASSEMBLY: F1/F2 CAPABLE

OUTLINE: SS622180ME

## TYPICAL MOTOR PERFORMANCE DATA

HP	KW	SYNC. RPM	F.L. RPM	FRAME	ENCLOSURE	KVA CODE	DESIGN
60	45	3600	3570	364TS	TEFC	F	B

PH	Hz	VOLTS	FL AMPS	START TYPE	DUTY	INSL	S.F	AMB°C	ELEVATION
3	60	575	53.5	Y START D RUN OR INV	CONTINUOU S	F5	1.15	40	3300

FULL LOAD EFF: 94.1	3/4 LOAD EFF: 94.5	1/2 LOAD EFF: 93.6	GTD. EFF	ELEC. TYPE	NO LOAD AMPS
FULL LOAD PF: 88.5	3/4 LOAD PF: 87.5	1/2 LOAD PF: 83	93	SQ CAGE INV RATED	13.2

F.L. TORQUE	LOCKED ROTOR AMPS	L.R. TORQUE	B.D. TORQUE	F.L. RISE°C
88 LB-FT	320	140 LB-FT 159	215 LB-FT 244	55

SOUND PRESSURE @ 3 FT.	SOUND POWER	ROTOR WK^2	MAX. WK^2	SAFE STALL TIME	STARTS /HOUR	APPROX. MOTOR WGT
- dBA	- dBA	- LB-FT^2	- LB-FT^2	20 SEC.	-	- LBS.

## \*\*\* SUPPLEMENTAL INFORMATION \*\*\*

DE BRACKET TYPE	ODE BRACKET TYPE	MOUNT TYPE	ORIENTATION	SEVERE DUTY	HAZARDOUS LOCATION	DRIP COVER	SCREENS	PAINT
STANDARD	STANDARD	RIGID	HORIZONTAL	FALSE	NONE	FALSE	NONE	BLUE (ENAMEL)

BEARINGS		GREASE	SHAFT TYPE	SPECIAL DE	SPECIAL ODE	SHAFT MATERIAL	FRAME MATERIAL
DE	OPE						
BALL	BALL						
6313	6313	POLYREX EM	TS	NONE	NONE	1045 HOT ROLLED (C-204)	CAST IRON

THERMO-PROTECTORS				THERMISTORS	CONTROL	SPACE /n HEATERS
THERMOSTATS	PROTECTORS	WDG RTDs	BRG RTDs			
NONE	NOT	NONE	NONE	NONE	FALSE	NONE VOLTS

If Inverter equals NONE, contact factory for further information

* N O T E S *	INVERTER TORQUE: CONSTANT 2:1					
	INV. HP SPEED RANGE: 1.5 X BASE SPEED					
	ENCODER: NONE					
	NONE NONE					
	NONE NONE PPR					
	BRAKE: NONE NONE					
	NONE P/N NONE					
	NONE NONE					
	NONE FT-LB		NONE V		NONE Hz	

DATE: 06/21/2017 07:43:09 AM

FORM 3531 REV.3 02/07/99

\*\* Subject to change without notice.

## Data Sheet

Date: 29-06-2017

Customer:

Attention:

Submitted by: FAREEDA DUDEKULA



364TSTFC6006

Submittal

Data @ 575 V

## Motor Load Data

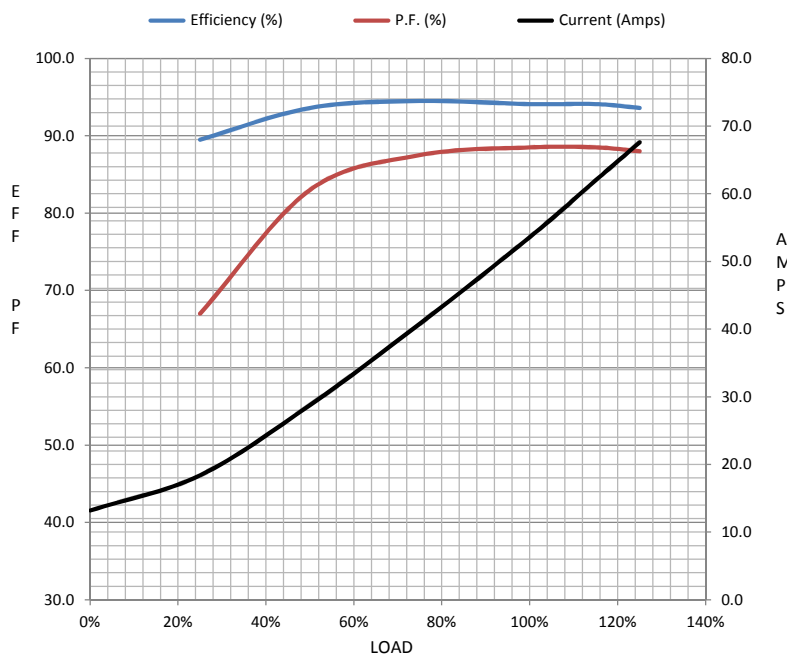
Load	0%	25%	50%	75%	100%	115%	125%	LR	
Current (Amps)	13.2	18.4	28.8	40.8	53.6	62.0	67.6	320	
Torque (ft-lb)	0.00	22.0	44.0	66.0	88.0	102	111	140	
RPM	3600	3595	3588	3580	3570	3,565	3560	0	
Efficiency (%)		89.5	93.6	94.5	94.1	94.1	93.6		
P.F. (%)	9.0	67.0	83.0	87.5	88.5	88.5	88.0	30.0	

## Motor Speed Data

	LR	Pull-Up	BD	Rated	Idle
Speed (RPM)	0	1800	3450	3570	3600
Current (Amps)	320	287	188	53.6	13.2
Torque (ft-lb)	140	105	215	88.0	0.00

## Information Block

HP	60.0			
Sync. RPM	3600			
Frame	364			
Enclosure	TEFC			
Construction	TFC			
Voltage	575 V			
Frequency	60 Hz			
Design	B			
LR Code letter	F			
Service Factor	1.15			
Temp Rise @ FL	55 ° C			
Duty	CONT			
Ambient	40 ° C			
Elevation	1,000 feet			
Rotor/Shaft wk <sup>2</sup>	0.00 Lb-Ft <sup>2</sup>			
Ref Wdg	T18302021 NONE			
Sound Pressure @ 1M	999 dBA			
VFD Rating	CONSTANT 2:1			
Outline Dwg	SS622180ME			
Conn. Diag	00519001ME			
Additional Specifications:				
0				
365THFS8036				
EQUIV CKT (OHMS / PHASE)				
R1	R2	X1	X2	Xm
0.0000	0.0000	0.0000	0.0000	0.0000



## Speed -Torque Curve

