

PRODUCT INFORMATION PACKET

Model No: 364THFS16579
Catalog No: 364THFS16579
40,1200,TEFC,364T,3/60/460

Regal and are trademarks of Regal Rexnord Corporation or one of its affiliated companies.
©2022 Regal Rexnord Corporation, All Rights Reserved. MC017097E



Nameplate Specifications

Output HP	40 Hp	Output KW	30.0 kW
Frequency	60 Hz	Voltage	460 V
Current	50.0 A	Speed	1185 rpm
Service Factor	1.15	Phase	3
Efficiency	93.6 %	Power Factor	80
Duty	Continuous	Insulation Class	F
Design Code	INV	KVA Code	G
Frame	364T	Enclosure	Totally Enclosed Fan Cooled
Thermal Protection	No Protection	Ambient Temperature	45 °C
Drive End Bearing Size	6314	Opp Drive End Bearing Size	6312
UL	Recognized	CSA	Y
CE	Y	IP Code	56
Number of Speeds	1		

Technical Specifications

Electrical Type	Squirrel Cage Inverter Duty	Starting Method	Inverter Only
Poles	6	Rotation	Reversible
Resistance Main	.145 Ohms	Mounting	Rigid Base
Motor Orientation	Horizontal	Drive End Bearing	Ball
Opp Drive End Bearing	Ball	Frame Material	Cast Iron
Shaft Type	T	Assembly/Box Mounting	F3
Inverter Load	CONSTANT 2000:1		
Connection Drawing	EE7300AP	Outline Drawing	SS557927-1450

This is an uncontrolled document once printed or downloaded and is subject to change without notice. Date Created:09/02/2022

4

3

2

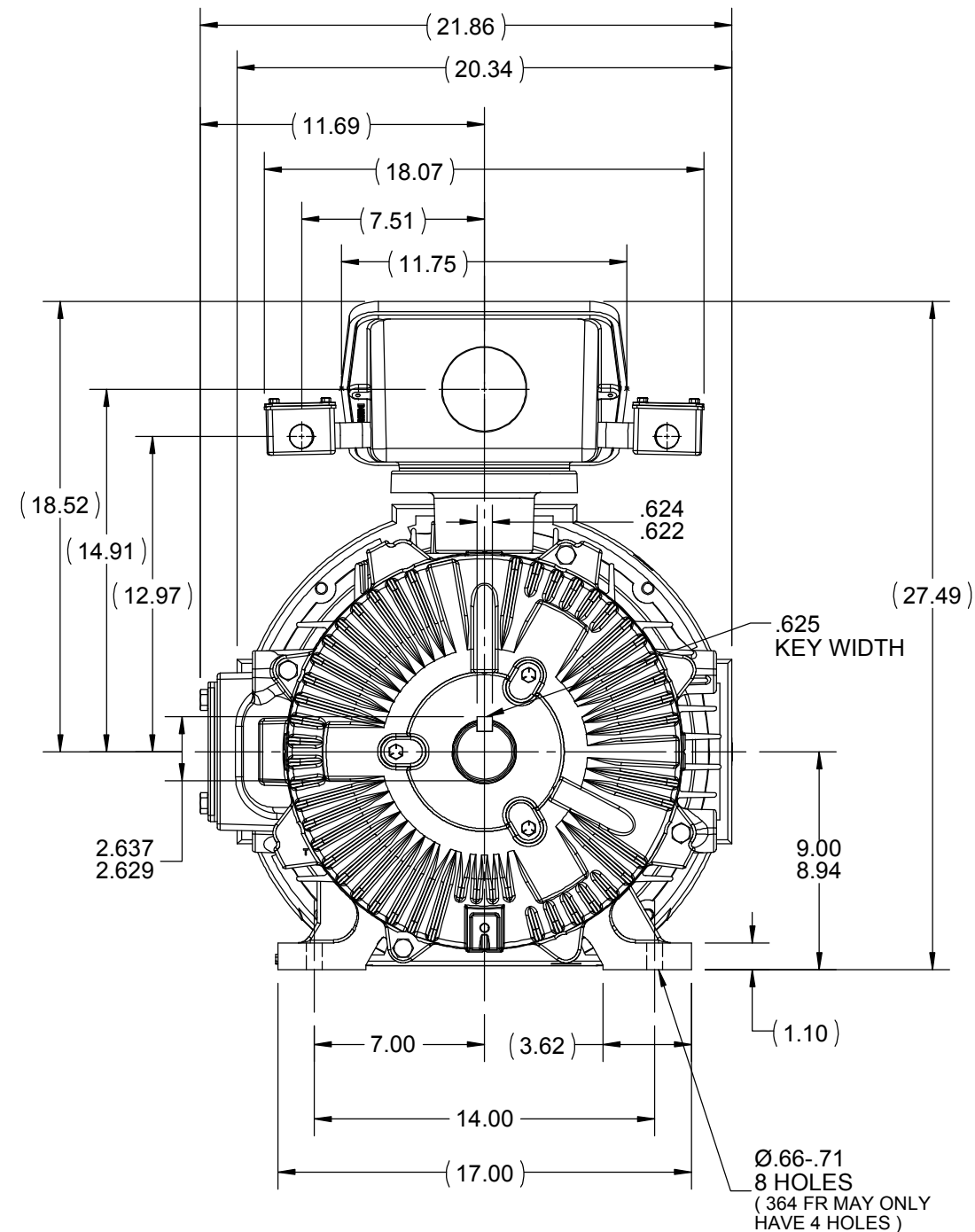
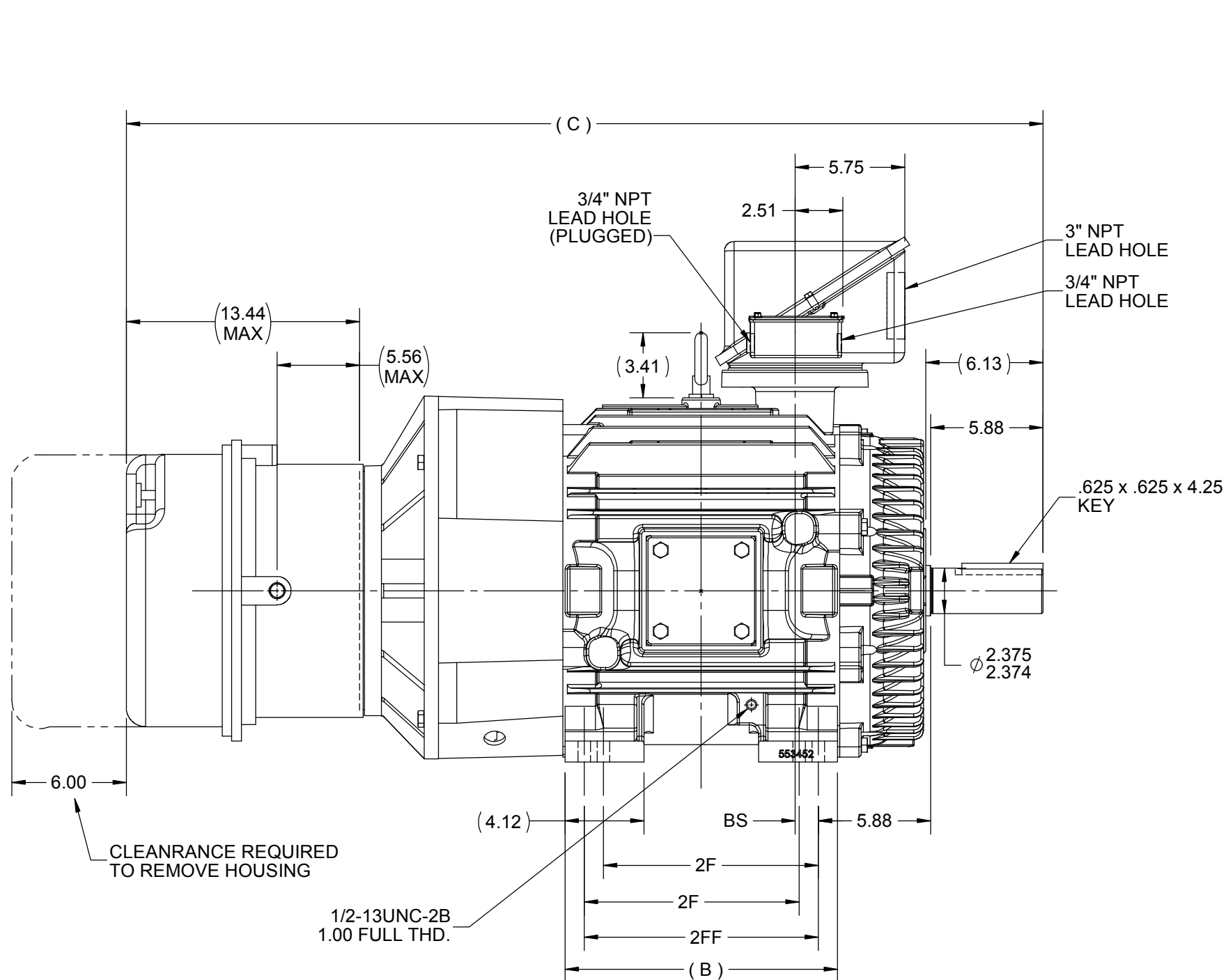
1

B

B

A

A



DRAWING REVISION	REVISION BY	DATE
A		
ECO	APPROVED BY	DATE
ECO-0174342		
ECO DESCRIPTION		
NEW DRAWING FOR SUBMITTAL		
COPYRIGHT REGAL BELOIT AMERICA, INC. ALL RIGHTS RESERVED. PROPRIETARY AND CONFIDENTIAL INFORMATION - THIS DOCUMENT IS THE PROPERTY OF REGAL BELOIT AMERICA, INC. ("OWNER") AND CONTAINS OWNER'S PROPRIETARY INFORMATION. ANY PERSON, CORPORATION OR OTHER FIRM RECEIVING IT IS DEEMED, BY RECEIVING IT, TO AGREE THAT IT, AND/OR ANY PART OF IT, SHALL NOT BE DISCLOSED TO ANY PERSON, CORPORATION OR OTHER ENTITY, DUPLICATED, AND/OR USED, EXCEPT AS EXPRESSLY APPROVED IN WRITING IN ADVANCE BY OWNER. THIS DOCUMENT SHALL BE RETURNED TO OWNER UPON REQUEST. IT MAY BE SUBJECT TO CERTAIN RESTRICTIONS UNDER APPLICABLE EXPORT CONTROL LAWS AND REGULATIONS.		

TOLERANCES UNLESS OTHERWISE SPECIFIED:			
DEC.	INCH	mm	ANGLE
.X	±0.1	[±2.5]	±0.5°
.XX	±0.01	[±0.25]	
.XXX	±0.005	[±0.127]	
.XXXX	±0.0005	[±0.0127]	
REMOVE BURRS & BREAK SHARP EDGES: .003/.015 [.076/.381] X 45° CORNER FILLETS: R.02 [.51] MACHINED SURFACES: 125 INCH 3.2 mm SHOWN IN [BRACKETS]			

DRAWN BY	REGAL TM Regal Beloit America, Inc.		
ZR			
DATE	07-11-2019		
APPROVED BY	DESCRIPTION		
	OUTLINE		
DATE	360T FR-TEBC-F3 C'BOX-AXIAL BLWR- AUX C'BOX- ENC		
REFERENCE	MATERIAL		PROCESS/FINISH
THIRD ANGLE PROJECTION	SIZE	DRAWING NUMBER	SHEET
	B	SS557927	1 OF 1

DASH	FRAME	B	C	2F	2FF	BS
1350	364T	13.25	47.21	11.25	---	5.62
1450	364/365T	14.25	48.21	11.25	12.25	6.13

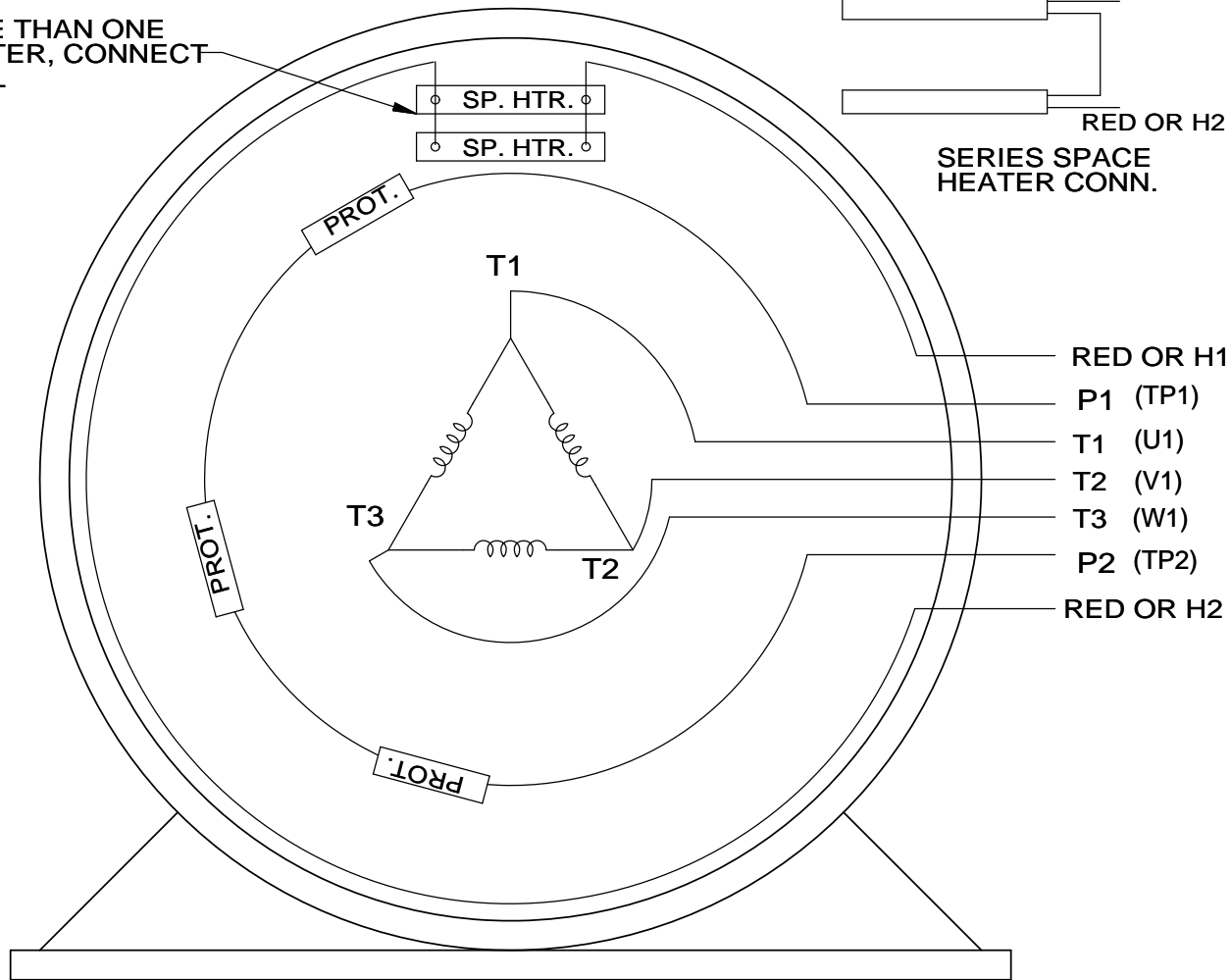
4

3

2

1

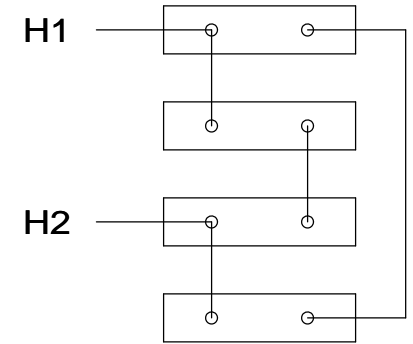
WHEN MORE THAN ONE
SPACE HEATER, CONNECT
IN PARALLEL



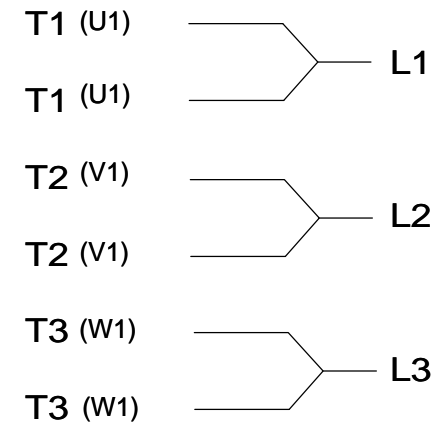
NOTE:
THERMO-PROTECTORS
CONNECTED IN SERIES

VIEW OF TERMINAL END

SPACE HEATERS
CONNECTED IN
SERIES PARALLEL



IF MOTOR OR GEN.
HAS 6 LEADS



DRAWING REVISION J	REVISION BY JHA	DATE 03-06-2017
ECO ECO-0119314	APPROVED BY DJK	DATE 03-06-2017

ECO DESCRIPTION

UPDATED TO SOLIDWORKS

COPYRIGHT REGAL BELOIT AMERICA, INC. ALL RIGHTS RESERVED.
PROPRIETARY AND CONFIDENTIAL INFORMATION - THIS DOCUMENT IS THE PROPERTY OF
REGAL BELOIT AMERICA, INC. ("OWNER") AND CONTAINS OWNER'S PROPRIETARY
INFORMATION. ANY PERSON, CORPORATION OR OTHER FIRM RECEIVING IT IS DEEMED,
BY RECEIVING IT, TO AGREE THAT IT, AND/OR ANY PART OF IT, SHALL NOT BE DISCLOSED
TO ANY PERSON, CORPORATION OR OTHER ENTITY, DUPLICATED, AND/OR USED, EXCEPT
AS EXPRESSLY APPROVED IN WRITING IN ADVANCE BY OWNER. THIS DOCUMENT SHALL
BE RETURNED TO OWNER UPON REQUEST. IT MAY BE SUBJECT TO CERTAIN
RESTRICTIONS UNDER APPLICABLE EXPORT CONTROL LAWS AND REGULATIONS.

TOLERANCES UNLESS
OTHERWISE SPECIFIED:

DEC.	INCH	mm	ANGLE
.X	±0.1	[±2.5]	±7' 30"
.XX	±0.02	[±0.51]	
.XXX	±0.005	[±0.127]	
.XXXX	±0.0005	[±0.0127]	
REMOVE BURRS & BREAK SHARP EDGES: .003/.015 [.076/.381] X 45° CORNER FILLETS: R.02 [.51] MACHINED SURFACES: 200 INCH 5.1/mm			
mm SHOWN IN [BRACKETS]			

DRAWN BY
KL

DATE
10-08-1993

APPROVED BY
TB

DATE
10-12-1993

REFERENCE

THIRD ANGLE
PROJECTION



Regal Beloit America, Inc.

DESCRIPTION

CONN DIAGRAM-EXTERNAL

3 PHASE - SINGLE VOLTAGE - WITH SPACE HEATERS

MATERIAL

PROCESS/FINISH

SIZE
A

DRAWING NUMBER

EE7300AP

SHEET
1 OF 1