

# PRODUCT INFORMATION PACKET



Model No: 326UTDP17033  
Catalog No: 326UTDP17033  
30,1800,DP,326UD,3/60/220/440

Regal and Marathon are trademarks of Regal Rexnord Corporation or one of its affiliated companies.  
©2024 Regal Rexnord Corporation, All Rights Reserved. MC017097E



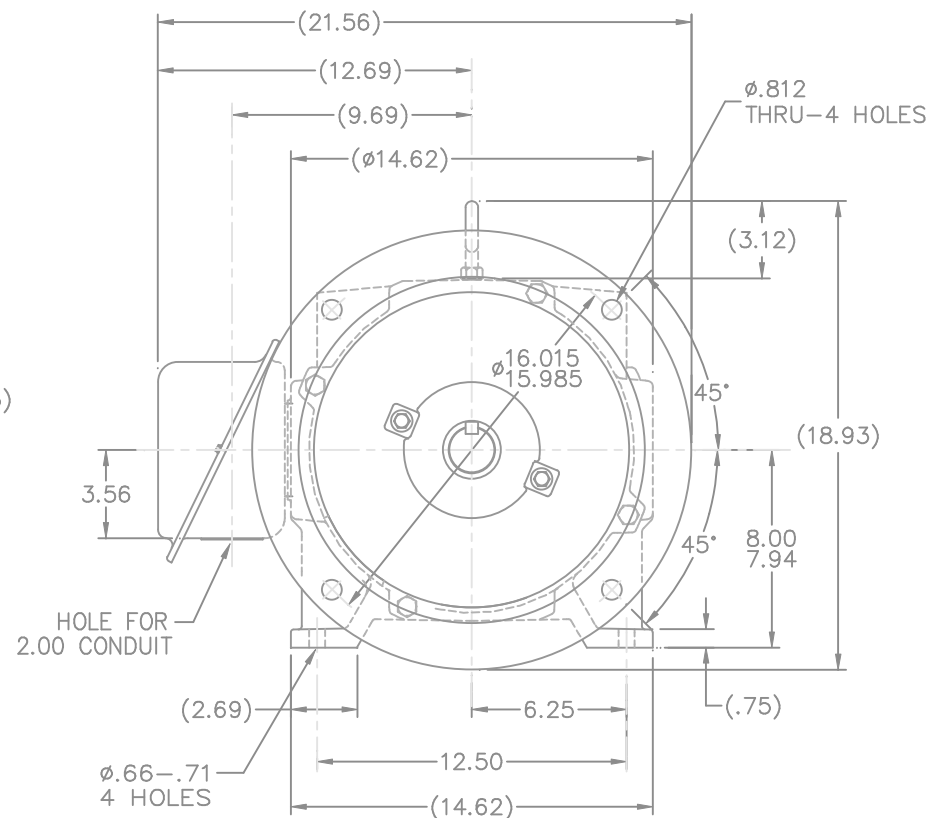
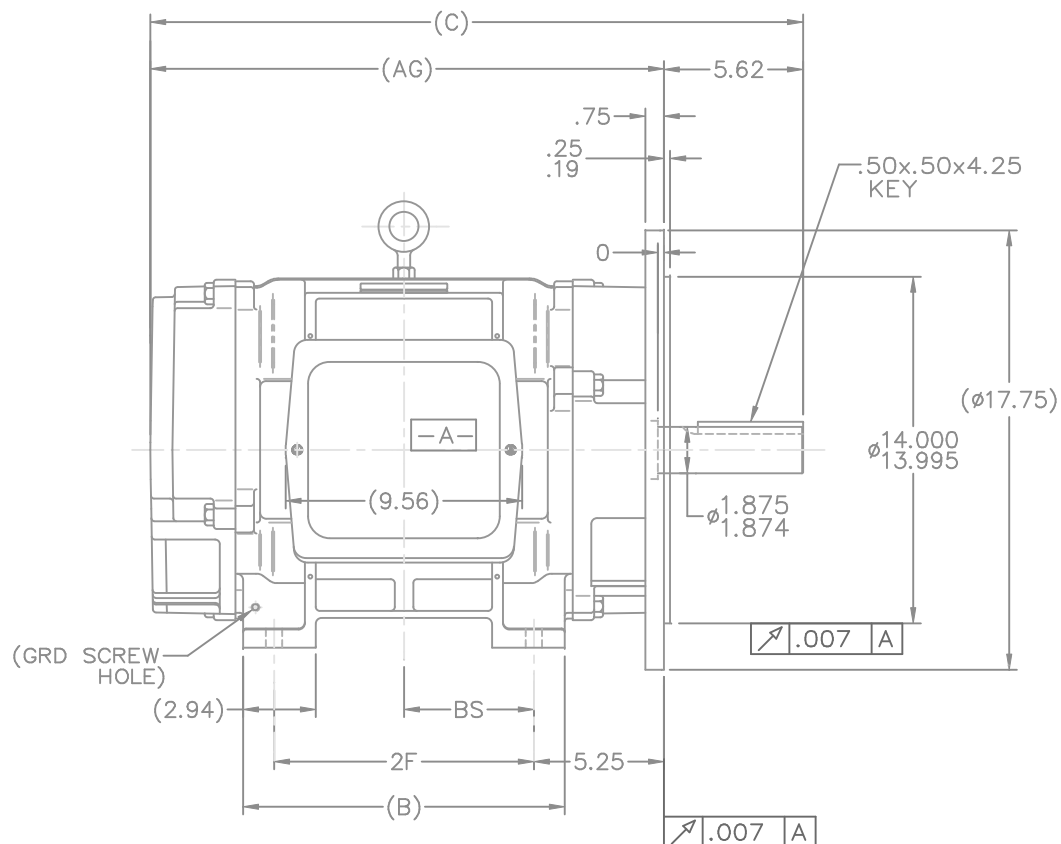
**Nameplate Specifications**

Phase	3	Output HP	30 Hp
Output KW	22.4 kW	Voltage	220/440 V
Speed	1775 rpm	Service Factor	1.15
Frame	326UD	Enclosure	Drip Proof
Thermal Protection	No Protection	Efficiency	90.2 %
Ambient Temperature	40 °C	Frequency	60 Hz
Current	80.5/40.0 A	Power Factor	80
Duty	Continuous	Insulation Class	B
Design Code	B	KVA Code	G
Drive End Bearing Size	312	Opp Drive End Bearing Size	311
UL	Recognized	CSA	Y
CE	Y	IP Code	12
Number of Speeds	1		

**Technical Specifications**

Electrical Type	Squirrel Cage Induction Run	Starting Method	Across The Line
Poles	4	Rotation	Reversible
Resistance Main	.305 Ohms	Mounting	Rigid Base
Motor Orientation	Horizontal	Drive End Bearing	Ball
Opp Drive End Bearing	Ball	Frame Material	Cast Iron
Shaft Type	U	Assembly/Box Mounting	F1/F2 CAPABLE
Outline Drawing	B-SS301182-1512	Connection Drawing	A-EE7308

This is an uncontrolled document once printed or downloaded and is subject to change without notice. Date Created:09/24/2024

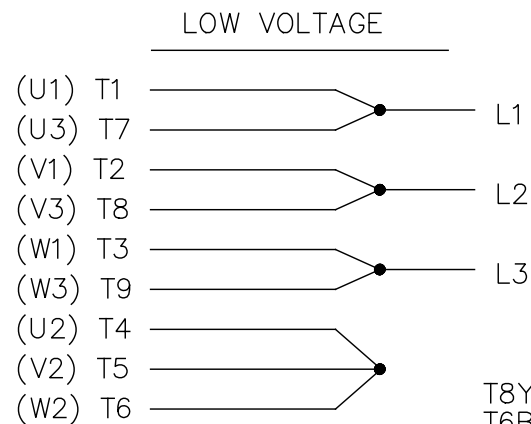
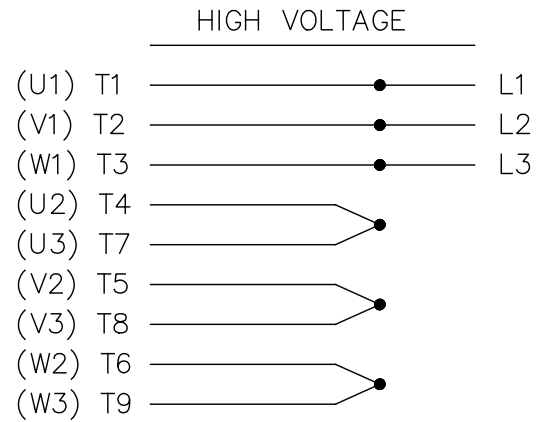


## NOTES:

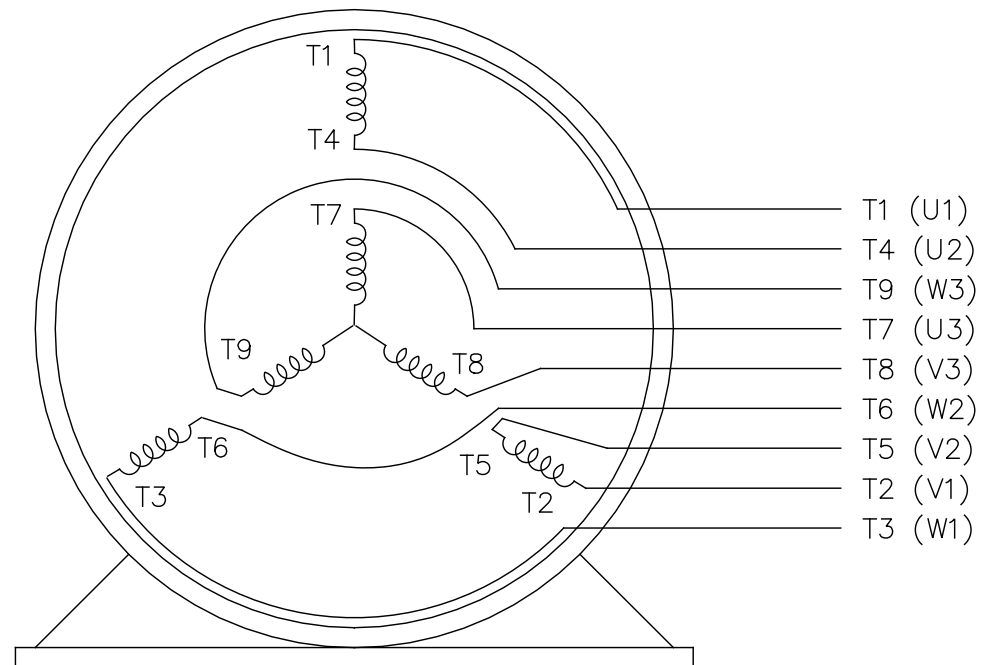
1. BOX CAN BE ROTATED IN 90° STEPS
2. BOX CAN BE MOUNTED ON OPPOSITE SIDE BY REMOVING BRACKETS AND TURNING FRAME 180°
3. NAMEPLATE TO BE READ FROM CONDUIT BOX SIDE OF MOTOR

DASH	FRAME	B	C	2F	BS	AG
1362	324UD	13.00	26.37	10.50	5.25	20.75
1512	326UD	14.50	27.87	12.00	6.00	22.25

TOLERANCES UNLESS SPECIFIED		MARATHON ELECTRIC		DRAWN RWR 10-06-2004	
DEC.	INCHES	CHK	ML 10-07-2004	APPD	DD 10-08-2004
.X	±.1			SCALE	1=5
.XX	±.03			REF	MU62383
.XXX	±.005			FMF	
.XXXX	±.0005			PREV	
NO.	REVISION	BY & DATE	CHK	ANG	±'30"
THIS DRAWING IN DESIGN AND DETAIL IS OUR PROPERTY AND MUST NOT BE USED EXCEPT IN CONNECTION WITH OUR WORK ALL RIGHTS OF DESIGN AND INVENTION ARE RESERVED THIS IS AN ELECTRONICALLY GENERATED DOCUMENT - DO NOT SCALE THIS PRINT					
RFP	10-08-2004	CAD FILE	SS301182	SIZE	DRAWING NO. PAGE 1 OF 1 REV.
DIST	LB			B	SS301182



# THREE PHASE DUAL VOLTAGE MOTOR



VIEW OF TERMINAL END

REF.  
WINDING DIAGRAM

T8Y, T2Y, T2BL, T4BX, T2EC, T2G  
T6BZ, T2B, T6BL, T4AV, T6B, T4B

OPTIONAL CORD  
CONNECTION

L1 — WHITE —  
L2 — RED —  
L3 — BLACK —

DRAWING REVISION	REVISION BY	DATE	TOLERANCES UNLESS OTHERWISE SPECIFIED	DRAWN BY:		
ECO	APPROVED BY	DATE	DEC. mm INCH ANGLE	AS		
ECO DESCRIPTION			.X ±2.5 ±0.11 ±0.5°	DATE:	DESCRIPTION	
NEW DRAWING			.XX ±0.51 ±0.021	02/20/2017		
<small>COPYRIGHT KAMAN INDUSTRIAL TECHNOLOGIES INC. VENDOR IDENTIFICATION TNP ALL RIGHTS RESERVED. PROPRIETARY AND CONFIDENTIAL INFORMATION - THIS DOCUMENT IS THE PROPERTY OF VENDOR IDENTIFICATION TNP ("OWNER") AND CONTAINS OWNER'S PROPRIETARY INFORMATION. ANY PERSON, CORPORATION OR OTHER FIRM RECEIVING IT IS DEEMED, BY RECEIVING IT, TO AGREE THAT IT, AND/OR ANY PART OF IT, SHALL NOT BE DISCLOSED TO ANY PERSON, CORPORATION OR OTHER ENTITY, DUPLICATED, AND/OR USED, EXCEPT AS EXPRESSLY APPROVED IN WRITING IN ADVANCE BY OWNER. THIS DOCUMENT SHALL BE RETURNED TO OWNER UPON REQUEST. IT MAY BE SUBJECT TO CERTAIN RESTRICTIONS UNDER APPLICABLE EXPORT CONTROL LAWS AND REGULATIONS.</small>			.XXX ±0.127 ±0.0051	APPROVED BY:	CONNECTION DIAGRA	
			.XXXX ±0.0127 ±0.00051	ST		
			REMOVE BURRS & BREAK SHARP EDGES .08/.38 [.003/.015]X 45°	DATE:	3 PHASE - UAL VOLTAGE	
			CORNER FILLETS R.51 [.02]	02/20/2017		
			MACHINED SURFACES INCH 125 mm 3.2	REFERENCE	MATERIAL	PROCESS/FINISH
			INCH SHOWN IN [BRACKETS]	EE7308		
				THIRD ANGLE PROJECTION	SIZE DWG NO	SHEET
					A EE7308TP	1