

# PRODUCT INFORMATION PACKET

Model No: 326TTFS16875  
Catalog No: 326TTFS16875  
40,1800,TEFC,326TC,3/60/230/460

Regal and are trademarks of Regal Rexnord Corporation or one of its affiliated companies.  
©2022 Regal Rexnord Corporation, All Rights Reserved. MC017097E



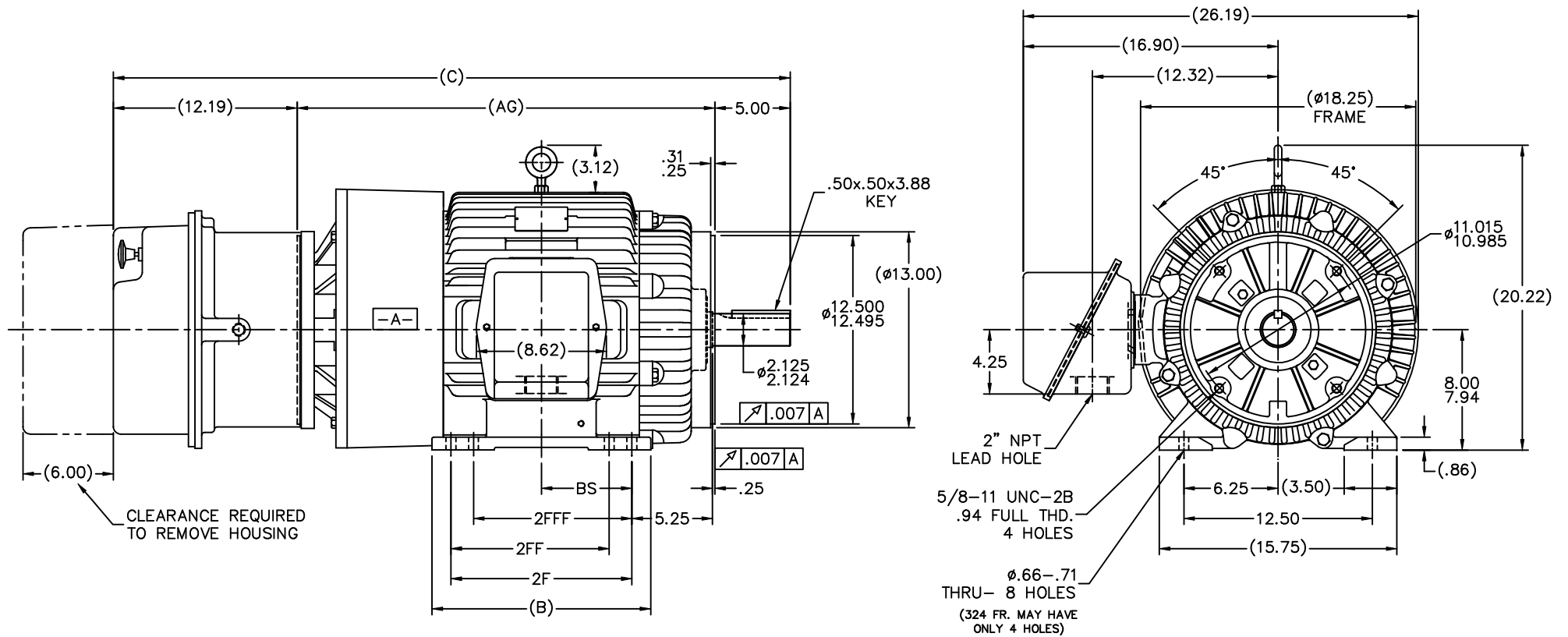
## Nameplate Specifications

Output HP	40 Hp	Output KW	30.0 kW
Frequency	60 Hz	Voltage	230/460 V
Current	95.0/47.5 A	Speed	1780 rpm
Service Factor	1.15	Phase	3
Efficiency	94.1 %	Power Factor	83
Duty	Continuous	Insulation Class	F
Design Code	B	KVA Code	G
Frame	326TC	Enclosure	Totally Enclosed Fan Cooled
Thermal Protection	No Protection	Ambient Temperature	40 °C
Drive End Bearing Size	6312	Opp Drive End Bearing Size	6311
UL	Recognized	CSA	Y
CE	Y	IP Code	56
Number of Speeds	1		


## Technical Specifications

Electrical Type	Squirrel Cage Inverter Rated	Starting Method	Line Or Inverter
Poles	4	Rotation	Reversible
Resistance Main	.135 Ohms	Mounting	Rigid Base
Motor Orientation	Horizontal	Drive End Bearing	Ball
Opp Drive End Bearing	Ball	Frame Material	Cast Iron
Shaft Type	T	Assembly/Box Mounting	F1/F2 CAPABLE
Inverter Load	CONSTANT 10:1		
Outline Drawing	B-SS300905-1300	Connection Drawing	A-EE7308

This is an uncontrolled document once printed or downloaded and is subject to change without notice. Date Created:09/02/2022



- NOTES:
1. C'BOX CAN BE ROTATED IN 90° STEPS.
  2. C'BOX CAN BE MOUNTED ON OPPOSITE SIDE BY REMOVING BRACKETS AND TURNING FRAME 180°
  3. NAMEPLATE TO BE READ FROM C'BOX SIDE OF MOTOR.

															TOLERANCES UNLESS SPECIFIED					DRAWN MJD 11-12-1998			
															DEC. INCHES					CHK ML 11-18-1998			
															.X ±.1			APPD DD 11-18-1998					
									3			UPDATED CONDUIT BOX MU70969 MSG 02-22-2008 ML .XX ±.03			TITLE OUTLINE - STEARNS BRAKE 320TC FR. - BB - TS - TEFC			SCALE 5-32					
									2			ADDED DUAL DRILLING CN 26835 DRS 05-04-1999 .XXX ±.005			REF L01731								
1150 324TC 43.39 26.19 13.00 10.50 --- --- 5.25									1			NEW DRAWING MU22686 MJD 11-18-1998 .XXXX ±.0005			MAT'L FMF								
1300 326TC 44.89 27.69 14.50 12.00 10.50 10.50 6.00									NO.			REVISION BY & DATE			CHK ANG ±7'30"			FINISH			PREV		
DASH FRAME C AG B 2F 2FF 2FFF BS									THIS DRAWING IN DESIGN AND DETAIL IS OUR PROPERTY AND MUST NOT BE USED EXCEPT IN CONNECTION WITH OUR WORK ALL RIGHTS OF DESIGN AND INVENTION ARE RESERVED THIS IS AN ELECTRONICALLY GENERATED DOCUMENT - DO NOT SCALE THIS PRINT			RFP			CAD FILE ss300905			SIZE B DRAWING NO. SS300905 PAGE OF 3					
												DIST LB											



NO.	REVISION	BY & DATE	CHK	ANG	TOLERANCES UNLESS SPECIFIED		DRAWN RM	ML	OF	REV.
					DEC.	INCHES				
5	CHG TO REGAL LOGO	SL 09/10/2015	AB				 <b>Regal</b> Beloit America, Inc.			
4	REVISED IEC NOTATIONS	MSG 11/15/2011	CMN	.X	±.1					
3	ADDED IEC NOTATIONS... (U1), (V1) ETC. MU95194	MSG 5/10/2010	MJS	.XX	±.02					
2	ADDED THE OPTIONAL CORD CONNECTION MU46318	RDH 04/24/2003	DRS	.XXX	±.005					
1	REDRAWN	RM 11/20/1990		.XXXX	±.0005					
					±7'30"		FINISH			
THIS DRAWING IN DESIGN AND DETAIL IS OUR PROPERTY AND MUST NOT BE USED EXCEPT IN CONNECTION WITH OUR WORK ALL RIGHTS OF DESIGN AND INVENTION ARE RESERVED THIS IS AN ELECTRONICALLY GENERATED DOCUMENT - DO NOT SCALE THIS PRINT					RFP	CAD FILE ee7308	SIZE A	DRAWING NO. EE7308	PAGE 5	
					DIST WP					