

PRODUCT INFORMATION PACKET

Model No: 326TTFPA7406

Catalog No: M899

Other Purpose Motor, 25 HP, 3 Ph, 60 Hz, 230/460 V, 900 RPM, 326HPV Frame, TEFC

Regal and are trademarks of Regal Rexnord Corporation or one of its affiliated companies.
©2022 Regal Rexnord Corporation, All Rights Reserved. MC017097E

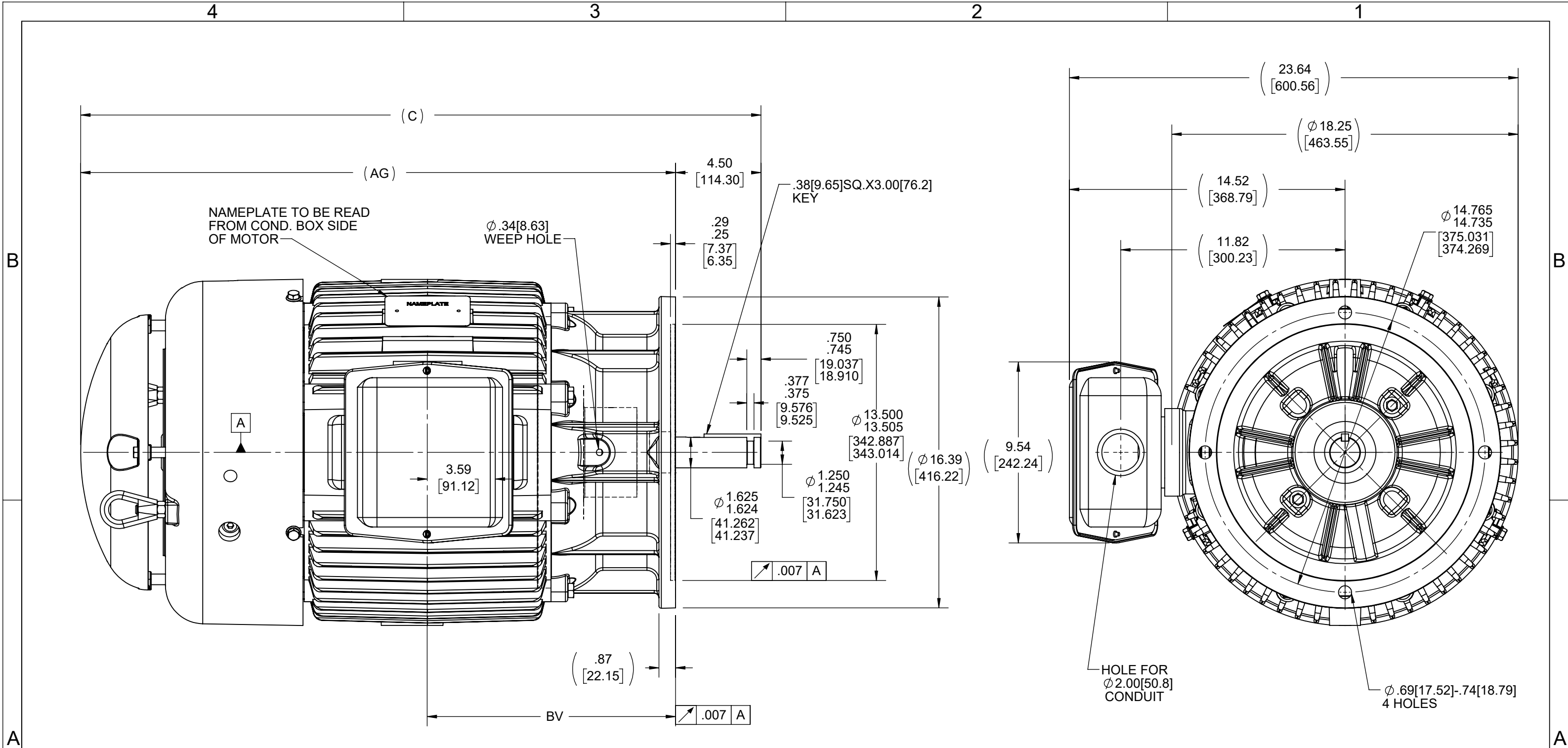


Nameplate Specifications

Output HP	25 Hp	Output KW	18.7 kW
Frequency	60 Hz	Voltage	230/460 V
Current	73.0/36.5 A	Speed	882 rpm
Service Factor	1.15	Phase	3
Efficiency	90.2 %	Power Factor	70
Duty	Continuous	Insulation Class	F
Design Code	B	KVA Code	G
Frame	326HPV	Enclosure	Totally Enclosed Fan Cooled
Thermal Protection	No Protection	Ambient Temperature	40 °C
Drive End Bearing Size	6311	Opp Drive End Bearing Size	6311
UL	Recognized	CSA	Y
CE	Y	IP Code	43
Number of Speeds	1		

Technical Specifications

Electrical Type	Squirrel Cage Induction Run	Starting Method	Part Wdg Start Low Volt Only
Poles	8	Rotation	Reversible
Resistance Main	.28 Ohms	Mounting	Round
Motor Orientation	Shaft Down	Drive End Bearing	Ball
Opp Drive End Bearing	Ball	Frame Material	Cast Iron
Shaft Type	HP	Overall Length	35.62 in
Frame Length	13.00 in	Shaft Diameter	1.625 in
Shaft Extension	4.5 in	Assembly/Box Mounting	F1/F2 CAPABLE
Connection Drawing	A-EE7308EK	Outline Drawing	B-SS28363-1300



DASH	FRAME	C	AG	BV
1150	324HP	34.12[866.64]	29.62[752.34]	12.31[312.67]
1300	326HP	35.85[910.59]	31.35[796.29]	13.08[331.72]

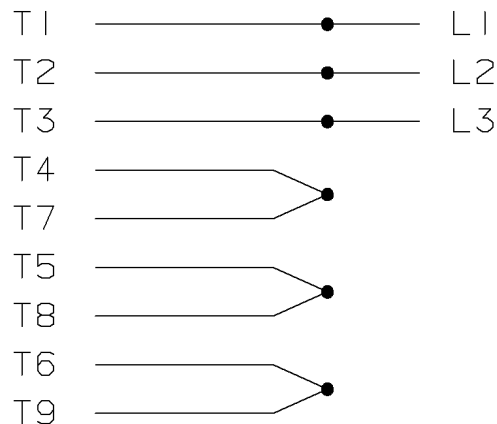
DRAWING REVISION P	REVISION BY NIV	REV DATE/© DATE 08/11/2022
REQUEST NUMBER	APPROVED BY NIV	DATE 08/11/2022
REQUEST NUMBER DESCRIPTION		
<small>COPYRIGHT (PER REVISION DATE) REGAL BELOIT AMERICA, INC. ALL RIGHTS RESERVED. PROPRIETARY AND CONFIDENTIAL INFORMATION - THIS DOCUMENT IS THE PROPERTY OF REGAL BELOIT AMERICA, INC. ("OWNER") AND CONTAINS OWNER'S PROPRIETARY INFORMATION. ANY PERSON, CORPORATION OR OTHER FIRM RECEIVING IT IS DEEMED, BY RECEIVING IT, TO AGREE THAT IT, AND/OR ANY PART OF IT, SHALL NOT BE DISCLOSED TO ANY PERSON, CORPORATION OR OTHER ENTITY, DUPLICATED, AND/OR USED, EXCEPT AS EXPRESSLY APPROVED IN WRITING IN ADVANCE BY OWNER. THIS DOCUMENT SHALL BE RETURNED TO OWNER UPON REQUEST. IT MAY BE SUBJECT TO CERTAIN RESTRICTIONS UNDER APPLICABLE EXPORT CONTROL LAWS AND REGULATIONS.</small>		

TOLERANCES (EXCEPT AS NOTED):
 DEC. INCH mm ANGLE
 .X ±0.1 [±3] ±7' 30"
 .XX ±0.03 [±0.8]
 .XXX ±0.005 [±0.13]
 .XXXX ±0.0005 [±0.013]
 REMOVE BURRS & BREAK SHARP EDGES: .003/.015 [.08/.38] X 45°
 CORNER FILLETS: R.02 [.5]
 MACHINED SURFACES: 200/5.1 INCH/mm
 mm DIMENSIONS IN [BRACKETS] ARE FOR REFERENCE ONLY

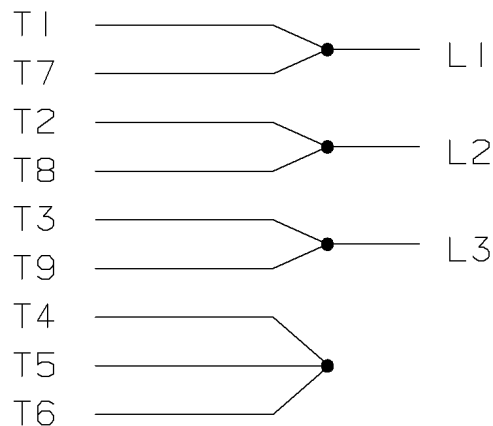
DRAWN BY DRS
DATE 11-22-1996
APPROVED BY ML
DATE 11-27-1996
REFERENCE
THIRD ANGLE PROJECTION

		Regal Beloit America, Inc.	
DESCRIPTION		OUTLINE	
		320HP FR. - BB - TS - TEFC	
MATERIAL	PROCESS/FINISH	SIZE B	DRAWING NUMBER SS28363
		SHEET 1 OF 1	

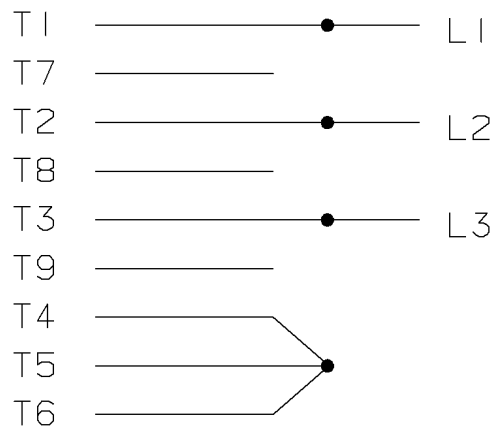
RUN - HIGH VOLTAGE



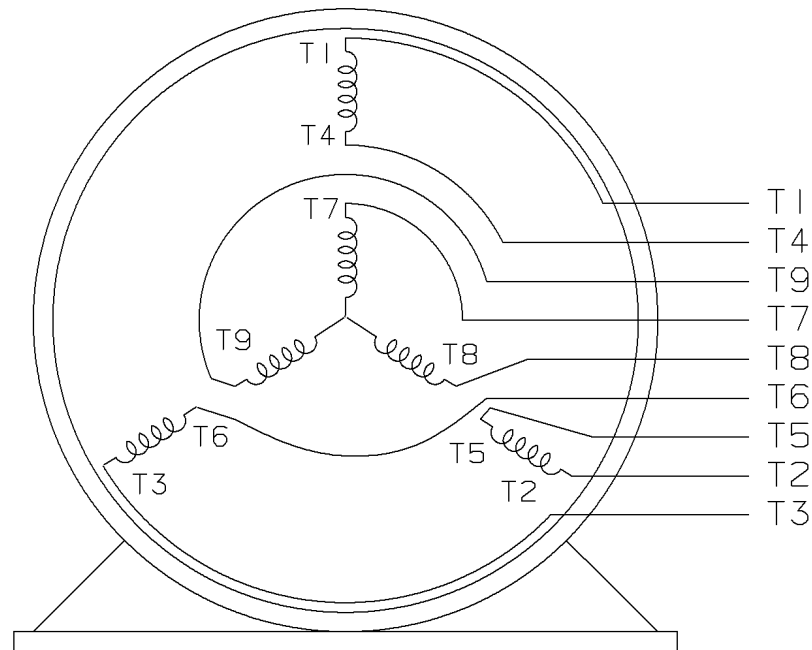
RUN - LOW VOLTAGE



START - LOW VOLTAGE



THREE PHASE
DUAL VOLTAGE MOTOR



VIEW OF TERMINAL END

REF.
WINDING DIAGRAM

T8Y, T2Y, T2BL, T4BX, T2EC, T2G, T8M
T6BZ, T2B, T6BL, T4AV, T6B, T4B

						TOLERANCES UNLESS SPECIFIED		REGAL-BELOIT <i>Motor Technologies</i>		DRAWN HLB 03-06-2001			
						DEC.	TOLERANCE			CHK	ML 03-19-2001		
						.X	± .1			APPD	GK 03-20-2001		
						.XX	± .02	TITLE CONNECTION DIAGRAM		SCALE			
2	ADDED T8M WINDING DIAGRAM	MU41675	CAV	05-15-2002	ML	.XXX	± .005	3Ø DUAL VOLTAGE MOTOR 9 LEADS		REF			
1	NEW DRAWING MU36218		HLB	03-20-2001	ML	.XXXX	± .0005	<input checked="" type="checkbox"/> SURFACE ROUGHNESS UNLESS SPECIFIED <input type="checkbox"/> MAT'L. FINISH		FMF			
NO.	REVISION		BY	DATE	CHK	ANG	± 7'30"			PREV			
THIS DRAWING IN DESIGN AND DETAIL IS OUR PROPERTY AND MUST NOT BE USED EXCEPT IN CONNECTION WITH OUR WORK. ALL RIGHTS OF DESIGN AND INVENTION ARE RESERVED. THIS IS AN ELECTRONICALLY GENERATED DOCUMENT - DO NOT SCALE THIS PRINT					PURCHASED		CAD FILE EE7308EK		SHOP BOOK		SIZE	DRAWING NO.	REV.
					DIST		WA - LB - WC - LM - BR - BY		A		EE7308EK		2