

PRODUCT INFORMATION PACKET



Model No: 326TTFCD36528
Catalog No: 326TTFCD36528
50,1800,TEFC,326TC,3/60/440

Regal and Marathon are trademarks of Regal Rexnord Corporation or one of its affiliated companies.
©2023 Regal Rexnord Corporation, All Rights Reserved. MC017097E



Nameplate Specifications

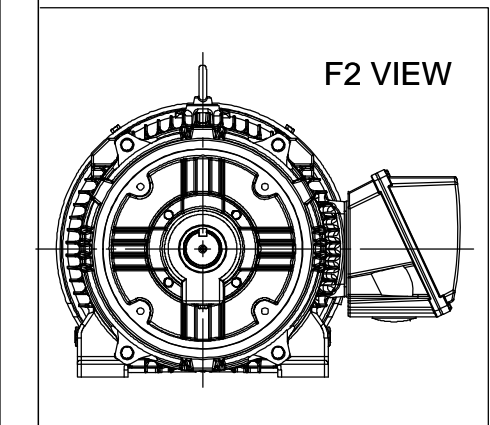
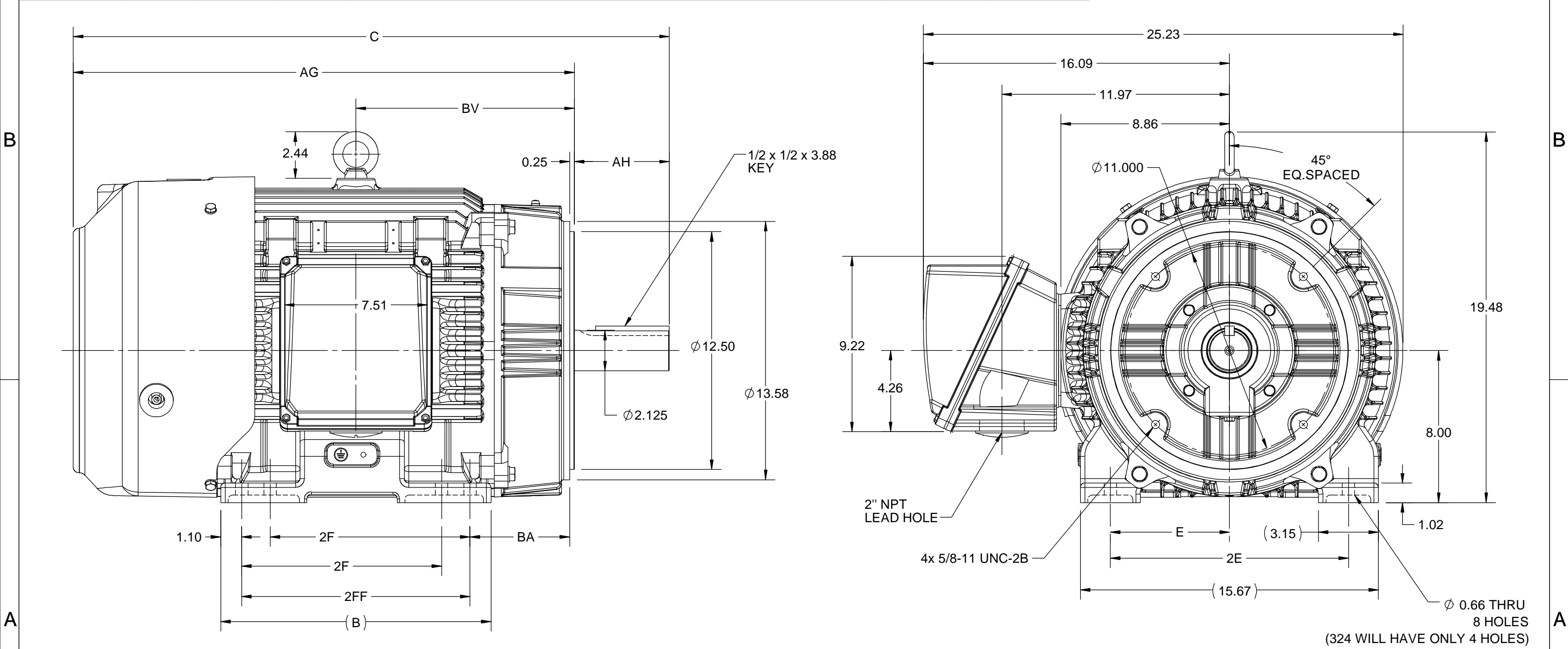
Phase	3	Output HP	50 Hp
Output KW	37.0 kW	Voltage	440 V
Speed	1782 rpm	Service Factor	1.15
Frame	326TC	Enclosure	Totally Enclosed Fan Cooled
Thermal Protection	No Protection	Efficiency	94.5 %
Ambient Temperature	40 °C	Frequency	60 Hz
Current	61.0 A	Power Factor	85
Duty	Continuous	Insulation Class	H
Design Code	B	KVA Code	G
Drive End Bearing Size	6312	Opp Drive End Bearing Size	6212
UL	Listed	CSA	Y
CE	Y	IP Code	56
Number of Speeds	1	Hazardous Location	DIVISION 2 T2B


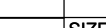
Technical Specifications

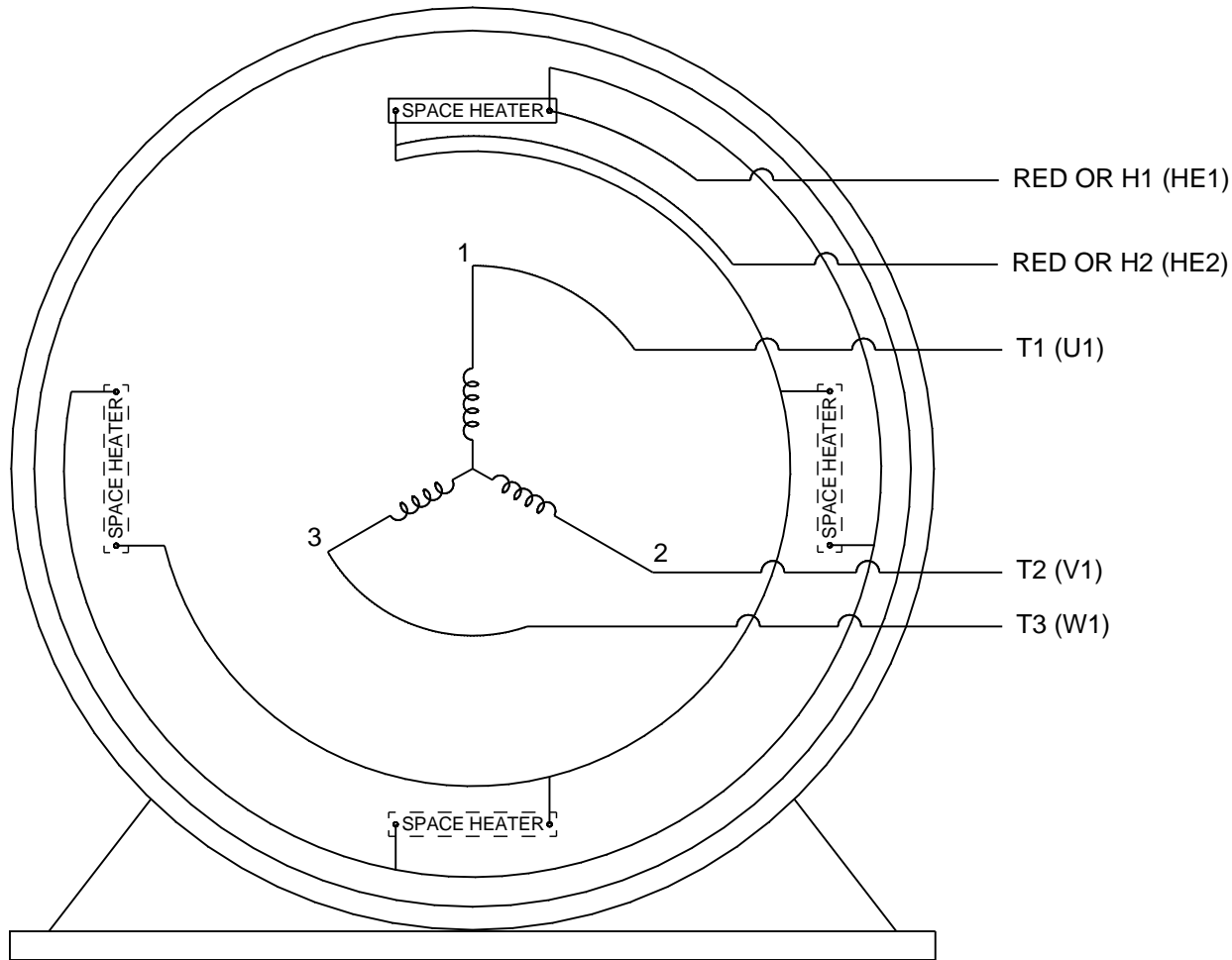
Electrical Type	Squirrel Cage Inverter Rated	Starting Method	Line Or Inverter
Poles	4	Rotation	Selective Clockwise
Resistance Main	.127 Ohms	Mounting	Rigid Base
Motor Orientation	Horizontal	Drive End Bearing	Ball
Opp Drive End Bearing	Ball	Frame Material	Cast Iron
Shaft Type	T	Shaft Diameter	2.125 in
Assembly/Box Mounting	F1/F2 CAPABLE	Inverter Load	CONSTANT 2:1/VARIABLE 10:1
Outline Drawing	SS557768-200	Connection Drawing	EE7300X

This is an uncontrolled document once printed or downloaded and is subject to change without notice. Date Created:04/24/2023

4				3				2				1
DASH NO.	B	C	E	2E	2F	2FF	AG	AH	BA	BV	MOUNTING	FRAME
100	12.71	29.85	6.25	12.50	---	10.50	24.69	5.00	5.25	10.75	F1 OR F2	324TC
200	14.21	31.35			10.50	12.00	26.19			11.50		324/326TC



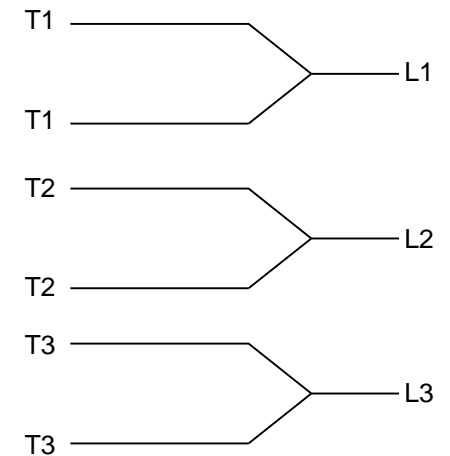
DRAWING REVISION B		REVISION BY ASHOK N		REV DATE/© DATE 09/10/2020		PRIMARY DIMENSIONS ARE INCH mm DIMENSIONS IN [BRACKETS] ARE FOR REFERENCE ONLY	DRAWN BY BISWA		 Regal Beloit America, Inc.			
ECO ECO-0192950		APPROVED BY GNK		DATE 09/10/2020			DATE 13/03/2019					
ECO DESCRIPTION							APPROVED BY SBD		DESCRIPTION OUTLINE 324/326TC FR-NEMA-SD & IEEE841			
DRAWING UPDATED COPYRIGHT (PER REVISION DATE) REGAL BELOIT AMERICA, INC. ALL RIGHTS RESERVED. PROPRIETARY AND CONFIDENTIAL INFORMATION - THIS DOCUMENT IS THE PROPERTY OF REGAL BELOIT AMERICA, INC. ("OWNER") AND CONTAINS OWNER'S PROPRIETARY INFORMATION. ANY PERSON, CORPORATION OR OTHER FIRM RECEIVING IT IS DEEMED, BY RECEIVING IT, TO AGREE THAT IT, AND/OR ANY PART OF IT, SHALL NOT BE DISCLOSED TO ANY PERSON, CORPORATION OR OTHER ENTITY, DUPLICATED, AND/OR USED, EXCEPT AS EXPRESSLY APPROVED IN WRITING IN ADVANCE BY OWNER. THIS DOCUMENT SHALL BE RETURNED TO OWNER UPON REQUEST. IT MAY BE SUBJECT TO CERTAIN RESTRICTIONS UNDER APPLICABLE EXPORT CONTROL LAWS AND REGULATIONS.							DATE 13/03/2019					
							REFERENCE		MATERIAL		PROCESS/FINISH	
							THIRD ANGLE PROJECTION 		SIZE B	DRAWING NUMBER SS557768		SHEET 1 OF 1



VIEW OF TERMINAL END

NOTES:

1. WHEN MORE THAN ONE HEATER IS USED, HEATERS MUST BE CONNECTED IN PARALLEL.
2. RED LEADS CONNECTED TO SPACE HEATER CIRCUIT,
3. THREE PHASE MOTOR CONDUIT BOX AT "A" SINGLE VOLTAGE.

IF MOTOR HAS
6 LEADS

A-9806 DECAL

DRAWING REVISION K	REVISION BY T. VUE	DATE 09-15-2016
ECO ECO-0109385	APPROVED BY T. BROWN	DATE 09-15-2016

ECO DESCRIPTION

ADDED HEATER IEC NOTATIONS

COPYRIGHT REGAL BELOIT AMERICA, INC. ALL RIGHTS RESERVED.
 PROPRIETARY AND CONFIDENTIAL INFORMATION - THIS DOCUMENT IS THE PROPERTY OF
 REGAL BELOIT AMERICA, INC. ("OWNER") AND CONTAINS OWNER'S PROPRIETARY
 INFORMATION. ANY PERSON, CORPORATION OR OTHER FIRM RECEIVING IT IS DEEMED,
 BY RECEIVING IT, TO AGREE THAT IT, AND/OR ANY PART OF IT, SHALL NOT BE DISCLOSED
 TO ANY PERSON, CORPORATION OR OTHER ENTITY, DUPLICATED, AND/OR USED, EXCEPT
 AS EXPRESSLY APPROVED IN WRITING IN ADVANCE BY OWNER. THIS DOCUMENT SHALL
 BE RETURNED TO OWNER UPON REQUEST. IT MAY BE SUBJECT TO CERTAIN
 RESTRICTIONS UNDER APPLICABLE EXPORT CONTROL LAWS AND REGULATIONS.

DRAWN BY
PGKDATE
09-18-1996APPROVED BY
MLDATE
10-01-1996

REFERENCE

THIRD ANGLE
PROJECTION

Regal Beloit America, Inc.

DESCRIPTION

CONN DIAGRAM-INTERNAL
 3Ø - SINGLE VOLTAGE

MATERIAL

PROCESS/FINISH

SIZE
A

DRAWING NUMBER

EE7300X

SHEET
1 OF 1