

PRODUCT INFORMATION PACKET

Model No: 326TTDR16005

Catalog No: M837B

60 HP Vertical Solid Shaft P-Base Motor, 3 phase, 3600 RPM, 230/460 V, 326HPV Frame, ODP
Vertical Pump Motors



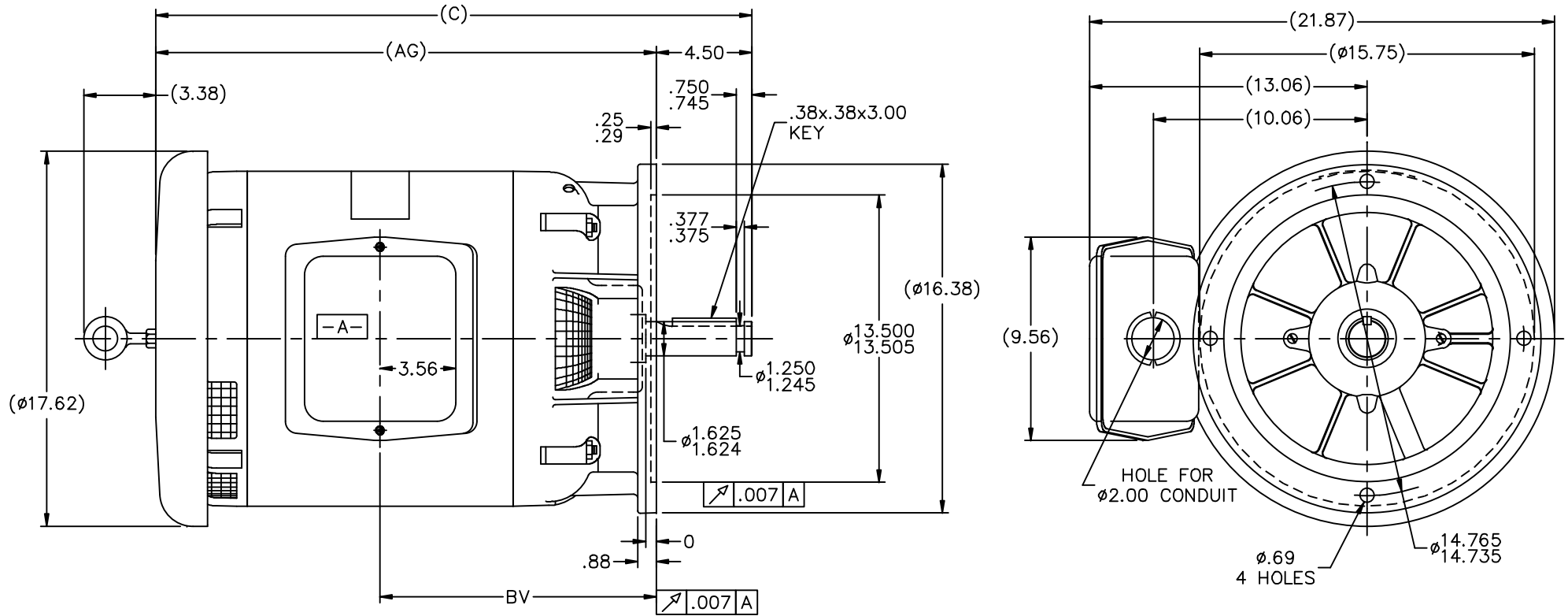
Regal and Marathon are trademarks of Regal Rexnord Corporation or one of its affiliated companies.
©2021 Regal Rexnord Corporation, All Rights Reserved. MC017097E

Nameplate Specifications

| | | | |
|------------------------|---------------------|----------------------------|-------------------|
| Output HP | 60 Hp | Output KW | 45.0 kW |
| Frequency | 60 Hz | Voltage | 230/460 V |
| Current | 135.0/67.5 A | Speed | 3550 rpm |
| Service Factor | 1.15 | Phase | 3 |
| Efficiency | 93.6 % | Power Factor | 88 |
| Duty | Continuous | Insulation Class | F |
| Design Code | B | KVA Code | F |
| Frame | 326HPV | Enclosure | Drip Proof |
| Thermal Protection | No | Ambient Temperature | 40 °C |
| Drive End Bearing Size | 6311 | Opp Drive End Bearing Size | 6311 |
| UL | Recognized | CSA | Y |
| CE | Y | IP Code | 22 |
| Number of Speeds | 1 | | |

Technical Specifications

| | | | |
|-----------------------|------------------------------------|-----------------------|------------------------|
| Electrical Type | Squirrel Cage Induction Run | Starting Method | Across The Line |
| Poles | 2 | Rotation | Reversible |
| Resistance Main | .105 Ohms | Mounting | Round |
| Motor Orientation | Shaft Down | Drive End Bearing | Ball |
| Opp Drive End Bearing | Ball | Frame Material | Rolled Steel |
| Shaft Type | HP | Overall Length | 30.56 in |
| Frame Length | 15.00 in | Shaft Diameter | 1.625 in |
| Shaft Extension | 4.5 in | Assembly/Box Mounting | F1/F2 Capable |
| Connection Drawing | A-EE7308K | Outline Drawing | B-SS28314-1500 |



- NOTES:
 1. C'BOX CAN BE ROTATED IN 90° STEP.
 2. NAMEPLATE TO BE READ FROM SHAFT END OF MOTOR
 3. MAX. SHAFT RUNOUT .002

| DASH | FRAME | C | AG | BV |
|------|-------|-------|-------|-------|
| 1250 | 320 | 28.06 | 23.56 | 13.00 |
| 1400 | 320 | 29.56 | 25.06 | 13.75 |
| 1450 | 320 | 30.06 | 25.56 | 14.00 |
| 1500 | 320 | 30.56 | 26.06 | 14.12 |

| | | | | | | | |
|--|-------------------------------------|----------------|-------|-----------------------------|--|----------------------|------------|
| 16 | REVISED NOTE # 2 (ECN 23047) | REP 01-16-2012 | BW | TOLERANCES UNLESS SPECIFIED | | DRAWN MJD 01-27-1999 | |
| 15 | ECN 16735 | NJS 6/21/2010 | BW | DEC. INCHES | | CHK ML 02-01-1999 | |
| 14 | REVISED NAMEPLATE LOCATION 09-3901 | MSG 9/22/2009 | DR | .X ±.1 | TITLE OUTLINE - 320HP FR. DR. PR. - STEEL C' BOX - 'P' BASE | APPD DD 02-01-1999 | |
| 13 | REDRAWN IN AUTOCAD | TAT 07-22-2004 | ML | .XX ±.03 | | SCALE 7=32 | |
| 12 | REVISED TO NEC CONDUIT BOX CN 2842B | BJW 02-04-2000 | .XXX | ±.005 | MATT'L | REF | |
| 11 | FRAME TYPES NOW 320 CN 27400-327 | DRS 08-23-1999 | .XXXX | ±.0005 | | FMF | |
| NO. | REVISION | BY & DATE | CHK | ANG | FINISH | PREV | |
| THIS DRAWING IN DESIGN AND DETAIL IS OUR PROPERTY AND MUST NOT BE USED EXCEPT IN CONNECTION WITH OUR WORK ALL RIGHTS OF DESIGN AND INVENTION ARE RESERVED THIS IS AN ELECTRONICALLY GENERATED DOCUMENT - DO NOT SCALE THIS PRINT | | | RFP | CAD FILE ss28314 | SIZE B | DRAWING NO. SS28314 | PAGE OF 16 |
| | | | DIST | LB | | | |

LOW VOLTAGE



HIGH VOLTAGE



VIEW OF TERMINAL END

| | | | | TOLERANCES UNLESS SPECIFIED | |  REGAL - BELOIT CORPORATION | DRAWN PGK 06-04-1997 | | | | | | |
|--|--|----------------|-----|-----------------------------|--------|--|---------------------------|--------------------|---------------|-------------|------|----|------|
| NO. | REVISION | BY & DATE | CHK | ANG | ± | | UNIT | CHK | ML 06-05-1997 | | | | |
| E | CORRECTED IEC MARKINGS ECD-0111208 | WGJ 01-23-2017 | EMH | DEC. | | INCHES | | | | | | | |
| D | RE-DRAWN WITH REGAL LOGO ECD-0110493 | WGJ 09-30-2016 | EMH | .X | ±.1 | | | APPD GK 06-15-1997 | | | | | |
| 8 | ADDED IEC DESIGNATIONS MU95020 | TJW 4/30/2010 | MJS | .XX | ±.02 | | TITLE | SCALE | | | | | |
| 7 | REVISED HIGH VOLTAGE L2 WAS L3 CN52600-354 | MRB 09-21-1998 | | .XXX | ±.005 | | CONNECTION DIAGRAM | REF | | | | | |
| 6 | REDRAWN ON CADD | PGK 06-05-1997 | | .XXXX | ±.0005 | | DELTA CON. - 3Ø - 9 LEADS | FMF | | | | | |
| | | | | | ±7'30" | | MAT'L. | PREV | | | | | |
| | | | | | | | FINISH | | | | | | |
| THIS DRAWING IN DESIGN AND DETAIL IS OUR PROPERTY AND MUST NOT BE USED EXCEPT IN CONNECTION WITH OUR WORK ALL RIGHTS OF DESIGN AND INVENTION ARE RESERVED THIS IS AN ELECTRONICALLY GENERATED DOCUMENT - DO NOT SCALE THIS PRINT | | | | | | | RFP | CAD FILE EE7308K | SIZE | DRAWING NO. | PAGE | OF | REV. |
| | | | | | | | DIST | | A | EE7308K | | | E |

CERTIFICATION DATA SHEET

Model#: 326TTDR16005 AN
CONN. DIAGRAM: A-EE7308K
OUTLINE: B-SS28314-1500

WINDING#: 326292 NONE 1
ASSEMBLY: F1/F2 CAPABLE

TYPICAL MOTOR PERFORMANCE DATA

| HP | KW | SYNC. RPM | F.L. RPM | FRAME | ENCLOSURE | KVA CODE | DESIGN |
|----|----|-----------|----------|--------|-----------|----------|--------|
| 60 | 45 | 3600 | 3550 | 326HPV | DP | F | B |

| PH | Hz | VOLTS | FL AMPS | START TYPE | DUTY | INSL | S.F | AMB°C | ELEVATION |
|----|----|---------|----------|-----------------|------------|------|------|-------|-----------|
| 3 | 60 | 230/460 | 135/67.5 | ACROSS THE LINE | CONTINUOUS | F3 | 1.15 | 40 | 3300 |

| FULL LOAD EFF: 93.6 | 3/4 LOAD EFF: 93.6 | 1/2 LOAD EFF: 93 | GTD. EFF | ELEC. TYPE | NO LOAD AMPS |
|---------------------|--------------------|-------------------|----------|-----------------|--------------|
| FULL LOAD PF: 88 | 3/4 LOAD PF: 85 | 1/2 LOAD PF: 78.5 | 93 | SQ CAGE IND RUN | 42 / 21 |

| F.L. TORQUE | LOCKED ROTOR AMPS | L.R. TORQUE | B.D. TORQUE | F.L. RISE°C |
|-------------|-------------------|---------------|---------------|-------------|
| 88.5 LB-FT | 820 / 410 | 130 LB-FT 147 | 210 LB-FT 237 | 40 |

| SOUND PRESSURE @ 3 FT. | SOUND POWER | ROTOR WK^2 | MAX. WK^2 | SAFE STALL TIME | STARTS / HOUR | APPROX. MOTOR WGT |
|------------------------|-------------|-------------|-----------|-----------------|---------------|-------------------|
| 82 dBA | 92 dBA | 5.8 LB-FT^2 | - LB-FT^2 | 15 SEC. | 2 | 625 LBS. |

***** SUPPLEMENTAL INFORMATION *****

| DE BRACKET TYPE | ODE BRACKET TYPE | MOUNT TYPE | ORIENTATION | SEVERE DUTY | HAZARDOUS LOCATION | DRIP COVER | SCREENS | PAINT |
|-----------------|------------------|------------|-------------|-------------|--------------------|------------|---------|---------------|
| P-BASE | STANDARD | ROUND | SHAFT DOWN | FALSE | NONE | TRUE | RODENT | BLUE (ENAMEL) |

| BEARINGS | | GREASE | SHAFT TYPE | SPECIAL DE | SPECIAL ODE | SHAFT MATERIAL | FRAME MATERIAL |
|----------|------|------------|------------|------------|-------------|-------------------------|----------------|
| DE | OPE | | | | | | |
| BALL | BALL | POLYREX EM | HP | NONE | NONE | 1045 HOT ROLLED (C-204) | ROLLED STEEL |
| 6311 | 6311 | | | | | | |

| THERMO-PROTECTORS | | | | THERMISTORS | CONTROL | SPACE /n HEATERS |
|-------------------|------------|----------|----------|-------------|---------|------------------|
| THERMOSTATS | PROTECTORS | WDG RTDs | BRG RTDs | | | |
| NONE | NOT | NONE | NONE | NONE | FALSE | NONE VOLTS |

If Inverter equals NONE, contact factory for further information

*
N
O
T
E
S
*

| |
|---------------------------|
| INVERTER TORQUE: NONE |
| INV. HP SPEED RANGE: NONE |
| ENCODER: NONE |
| NONE NONE |
| NONE NONE PPR |
| BRAKE: NONE NONE |
| NONE P/N NONE |
| NONE NONE |
| NONE FT-LB NONE V NONE Hz |

DATE: 06/21/2017 06:51:18 AM
 FORM 3531 REV.3 02/07/99
 ** Subject to change without notice.

Data Sheet

Date: 6/20/2017

326TTDR16005

Customer: _____
 Attention: _____
 Submitted by: FAREEDA DUDEKULA



Submittal

Data @ 460 V

Motor Load Data

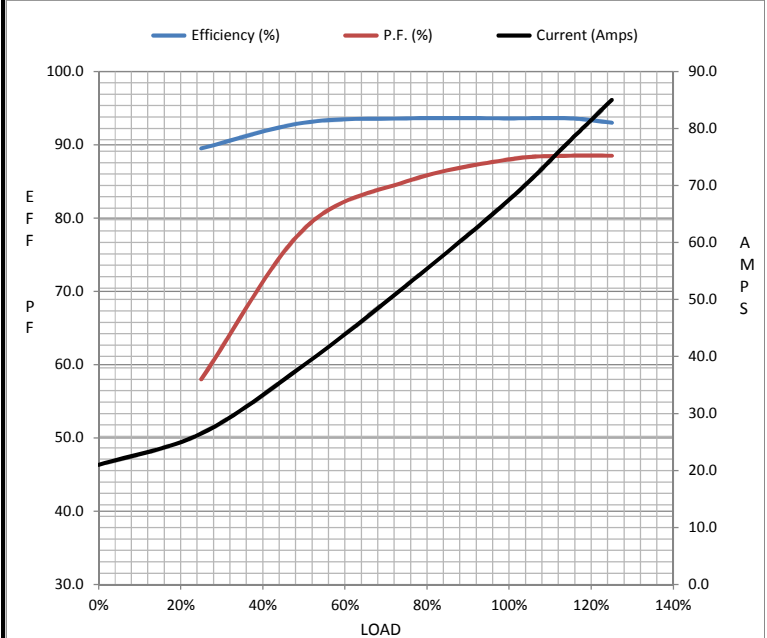
| Load | 0% | 25% | 50% | 75% | 100% | 115% | 125% | LR |
|----------------|------|------|------|------|------|-------|------|------|
| Current (Amps) | 21.0 | 26.5 | 38.5 | 52.5 | 67.5 | 78.0 | 85.0 | 410 |
| Torque (ft-lb) | 0.00 | 22.0 | 44.0 | 66.5 | 88.5 | 102 | 111 | 130 |
| RPM | 3600 | 3590 | 3580 | 3565 | 3550 | 3,545 | 3540 | 0 |
| Efficiency (%) | | 89.5 | 93.0 | 93.6 | 93.6 | 93.6 | 93.0 | |
| P.F. (%) | 6.0 | 58.0 | 78.5 | 85.0 | 88.0 | 88.5 | 88.5 | 28.0 |

Motor Speed Data

| | LR | Pull-Up | BD | Rated | Idle |
|----------------|-----|---------|------|-------|------|
| Speed (RPM) | 0 | 1800 | 3350 | 3550 | 3600 |
| Current (Amps) | 410 | 375 | 250 | 67.5 | 21.0 |
| Torque (ft-lb) | 130 | 120 | 210 | 88.5 | 0.00 |

Information Block

| | | | | |
|-----------------------------|------------------------|--------|--------|---------|
| HP | 60.0 | | | |
| Sync. RPM | 3600 | | | |
| Frame | 326 | | | |
| Enclosure | DP | | | |
| Construction | TDR | | | |
| Voltage | 230/460 V | | | |
| Frequency | 60 Hz | | | |
| Design | B | | | |
| LR Code letter | F | | | |
| Service Factor | 1.15 | | | |
| Temp Rise @ FL | 40 °C | | | |
| Duty | CONT | | | |
| Ambient | 40 °C | | | |
| Elevation | 1,000 feet | | | |
| Rotor/Shaft wk ² | 5.8 Lb-Ft ² | | | |
| Ref Wdg | 326292 NONE | | | |
| Sound Pressure @ 1M | 82 dBA | | | |
| VFD Rating | NONE | | | |
| Outline Dwg | B-SS28314-1500 | | | |
| Conn. Diag | A-EE7308K | | | |
| Additional Specifications: | | | | |
| 0 | | | | |
| 0 | | | | |
| EQUIV CKT (OHMS / PHASE) | | | | |
| R1 | R2 | X1 | X2 | Xm |
| 0.0610 | 0.0480 | 0.4490 | 0.3760 | 12.9930 |



Speed - Torque Curve

