

PRODUCT INFORMATION PACKET



Model No: 326TTDR14010

Catalog No: M837A

60 HP Vertical Solid Shaft P-Base Motor, 3 phase, 3600 RPM, 230/460 V, 326HPV Frame, ODP
Vertical Pump Motors

Regal and Marathon are trademarks of Regal Rexnord Corporation or one of its affiliated companies.
©2021 Regal Rexnord Corporation, All Rights Reserved. MC017097E

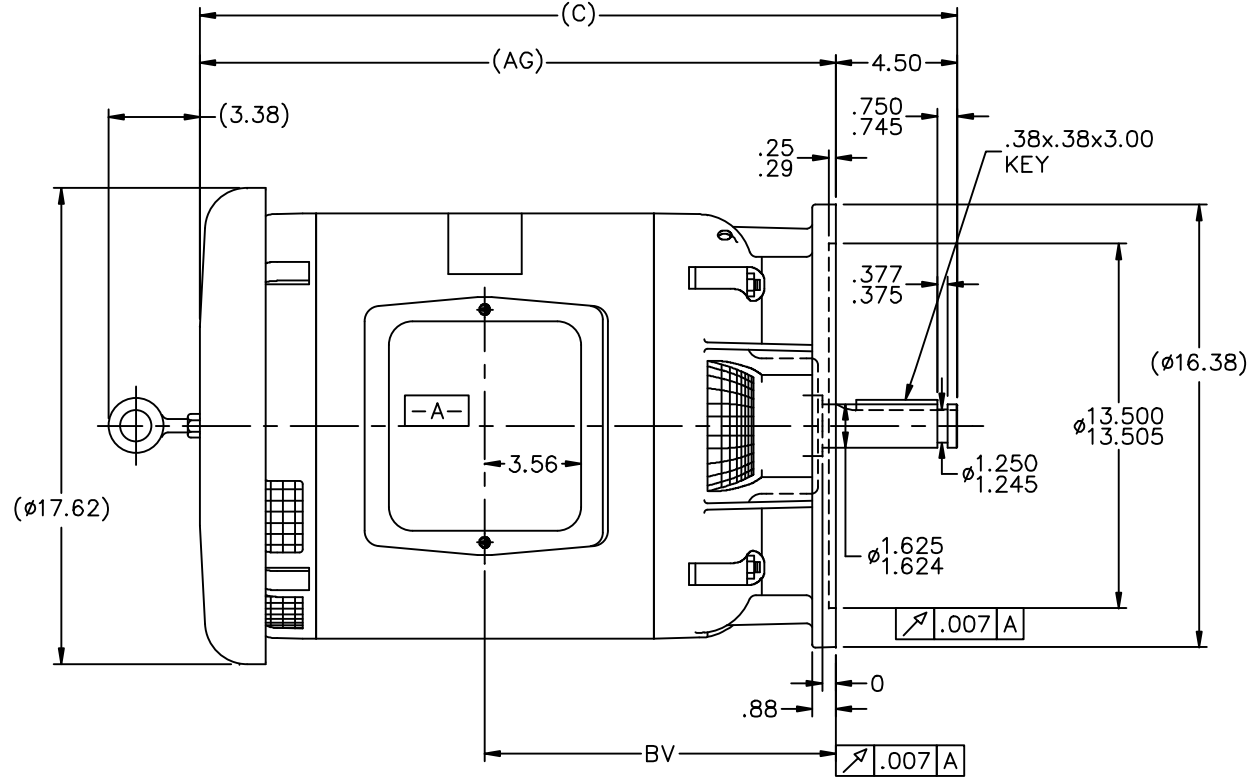


Nameplate Specifications

Output HP	60 Hp	Output KW	45.0 kW
Frequency	60 Hz	Voltage	230/460 V
Current	135.0/67.5 A	Speed	3555 rpm
Service Factor	1.15	Phase	3
Efficiency	93 %	Power Factor	89
Duty	Continuous	Insulation Class	B
Design Code	B	KVA Code	G
Frame	326HPV	Enclosure	Drip Proof
Thermal Protection	No	Ambient Temperature	40 °C
Drive End Bearing Size	6311	Opp Drive End Bearing Size	6311
UL	Recognized	CSA	Y
CE	Y	IP Code	22
Number of Speeds	1		

Technical Specifications


Electrical Type	Squirrel Cage Induction Run	Starting Method	Across The Line
Poles	2	Rotation	Reversible
Resistance Main	.14 Ohms	Mounting	Round
Motor Orientation	Shaft Down	Drive End Bearing	Ball
Opp Drive End Bearing	Ball	Frame Material	Rolled Steel
Shaft Type	HP	Overall Length	30.56 in
Frame Length	15.00 in	Shaft Diameter	1.625 in
Shaft Extension	4.5 in	Assembly/Box Mounting	F1/F2 CAPABLE
Outline Drawing	B-SS28314-1500	Connection Drawing	A-EE7308K



NOTES:

1. C-BOX CAN BE ROTATED IN 90° STEP.
2. NAMEPLATE TO BE READ FROM SHAFT END OF MOTOR
3. MAX. SHAFT RUNOUT .002

DASH	FRAME	C	AG	BV
1250	320	28.06	23.56	13.00
1400	320	29.56	25.06	13.75
1450	320	30.06	25.56	14.00
1500	320	30.56	26.06	14.12

14	REVISED NOTE # 2 (ECN 23047)	REP 01-16-2012	BW	TOLERANCES UNLESS SPECIFIED		DRAWN MJD 01-27-1999	
15	ECN 16735	NJS 6/21/2010	BW	DEC. INCHES		CHK	ML 02-01-1999
14	REVISED NAMEPLATE LOCATION 09-3901	MSG 9/22/2009	DR	X ±.1		APPD	DD 02-01-1999
13	REDRAWN IN AUTOCAD	TAT 07-22-2004	ML	.XX ±.03		SCALE	7=32
12	REVISED TO NEC CONDUIT BOX CN 28428	BJW 02-04-2000		.XXX ±.005		REF	
11	FRAME TYPES NOW 320 CN 27400-327	DRS 08-23-1999		.XXXX ±.0005	MAT'L	FMF	
NO.	REVISION	BY & DATE	CHK	ANG ±7°30"	FINISH	PREV	
THIS DRAWING IN DESIGN AND DETAIL IS OUR PROPERTY AND MUST NOT BE USED EXCEPT IN CONNECTION WITH OUR WORK. ALL RIGHTS OF DESIGN AND INVENTION ARE RESERVED. THIS IS AN ELECTRONICALLY GENERATED DOCUMENT - DO NOT SCALE THIS PRINT					RFP	CAD FILE ss28314	
			DIST LB			SIZE B	DRAWING NO. SS28314
							PAGE OF 16

LOW VOLTAGE

EE7308K

HIGH VOLTAGE

VIEW OF TERMINAL END

			TOLERANCES UNLESS SPECIFIED			 REGAL - BELOIT CORPORATION	DRAWN PGK 06-04-1997		
NO.	REVISION	BY & DATE	CHK	ANG	± 7'30"		CHK	ML	06-05-1997
E	CORRECTED IEC MARKINGS ECD-0111208	WGJ 01-23-2017	EMH	DEC.	INCHES				
D	RE-DRAWN WITH REGAL LOGO ECD-0110493	WGJ 09-30-2016	EMH	.X	± .1				
8	ADDED IEC DESIGNATIONS MU95020	TJW 4/30/2010	MJS	.XX	± .02	TITLE CONNECTION DIAGRAM DELTA CON. - 3Ø - 9 LEADS			
7	REVISED HIGH VOLTAGE L2 WAS L3 CN52600-354	MRB 09-21-1998		.XXX	± .005				
6	REDRAWN ON CADD	PGK 06-05-1997		.XXXX	± .0005				
						MAT'L.			
						FINISH			
THIS DRAWING IN DESIGN AND DETAIL IS OUR PROPERTY AND MUST NOT BE USED EXCEPT IN CONNECTION WITH OUR WORK ALL RIGHTS OF DESIGN AND INVENTION ARE RESERVED THIS IS AN ELECTRONICALLY GENERATED DOCUMENT - DO NOT SCALE THIS PRINT						RFP	CAD FILE EE7308K		SIZE
						DIST			A
								DRAWING NO.	PAGE OF
								EE7308K	REV.
									E