

# PRODUCT INFORMATION PACKET

Model No: 326TTDP17217  
Catalog No: 326TTDP17217  
20,1800,DP,326T/3/60/200,2SPD,1WDG,CT

Regal and are trademarks of Regal Rexnord Corporation or one of its affiliated companies.  
©2022 Regal Rexnord Corporation, All Rights Reserved. MC017097E



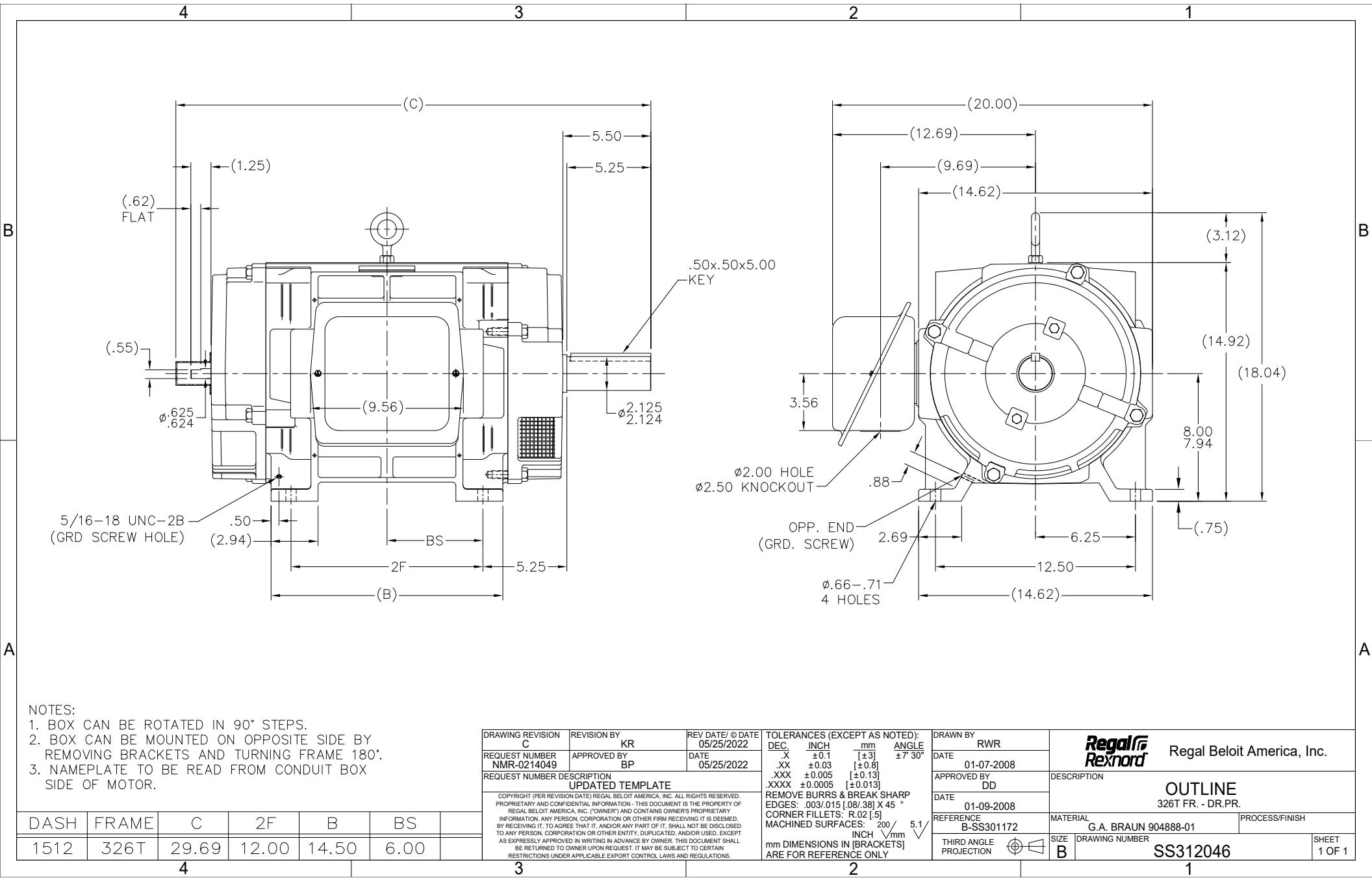
## Nameplate Specifications

Output HP	20,10 Hp	Output KW	14.9 kW
Frequency	60 Hz	Voltage	200 V
Current	54,43.5 A	Speed	1710,850 rpm
Service Factor	1	Phase	3
Efficiency	88.5 %	Power Factor	89
Duty	Continuous	Insulation Class	F
Design Code	1CT	KVA Code	J
Frame	326TZ	Enclosure	Drip Proof
Thermal Protection	No	Ambient Temperature	40 °C
Drive End Bearing Size	NU312	Opp Drive End Bearing Size	311
UL	Recognized	CSA	Y
CE	Y	IP Code	12
Number of Speeds	2		

## Technical Specifications

Electrical Type	Squirrel Cage Induction Run	Starting Method	Across The Line
Poles	4/8	Rotation	Reversible
Resistance Main	.467 Ohms	Mounting	Rigid Base
Motor Orientation	Horizontal	Drive End Bearing	Roller
Opp Drive End Bearing	Ball	Frame Material	Cast Iron
Shaft Type	Special Extension Both Sides	Assembly/Box Mounting	F1/F2 CAPABLE
Outline Drawing	B-SS312046-1512	Connection Drawing	A-EE7324

This is an uncontrolled document once printed or downloaded and is subject to change without notice. Date Created:05/26/2022



- NOTES:
1. BOX CAN BE ROTATED IN 90° STEPS.
  2. BOX CAN BE MOUNTED ON OPPOSITE SIDE BY REMOVING BRACKETS AND TURNING FRAME 180°.
  3. NAMEPLATE TO BE READ FROM CONDUIT BOX SIDE OF MOTOR.

DASH	FRAME	C	2F	B	BS	
1512	326T	29.69	12.00	14.50	6.00	

DRAWING REVISION	REVISION BY	REV DATE/ © DATE
C	KR	05/25/2022
REQUEST NUMBER	APPROVED BY	DATE
NMR-0214049	BP	05/25/2022
REQUEST NUMBER DESCRIPTION		
UPDATED TEMPLATE		
COPYRIGHT (PER REVISION DATE) REGAL BELOIT AMERICA, INC. ALL RIGHTS RESERVED. PROPRIETARY AND CONFIDENTIAL INFORMATION - THIS DOCUMENT IS THE PROPERTY OF REGAL BELOIT AMERICA, INC. (OWNER) AND CONTAINS OWNER'S PROPRIETARY INFORMATION. ANY PERSON, CORPORATION OR OTHER FIRM RECEIVING IT IS DEEMED, BY RECEIVING IT, TO AGREE THAT IT, AND/OR ANY PART OF IT, SHALL NOT BE DISCLOSED TO ANY PERSON, CORPORATION OR OTHER ENTITY, DUPLICATED, AND/OR USED, EXCEPT AS EXPRESSLY APPROVED IN WRITING IN ADVANCE BY OWNER. THIS DOCUMENT SHALL BE RETURNED TO OWNER UPON REQUEST. IT MAY BE SUBJECT TO CERTAIN RESTRICTIONS UNDER APPLICABLE EXPORT CONTROL LAWS AND REGULATIONS.		

TOLERANCES (EXCEPT AS NOTED):
DEC. INCH mm ANGLE
.X ±0.1 [±3] ±7° 30'
.XX ±0.03 [±0.8]
.XXX ±0.005 [±0.13]
.XXXX ±0.0005 [±0.013]
REMOVE BURRS & BREAK SHARP EDGES: .003/.015 [.08/.38] X 45°
CORNER FILLETS: R.02 [.5]
MACHINED SURFACES: $\sqrt{200}$ INCH $\sqrt{5.1}$ mm
mm DIMENSIONS IN [BRACKETS] ARE FOR REFERENCE ONLY

DRAWN BY	DATE	APPROVED BY	DATE	REFERENCE	THIRD ANGLE PROJECTION
RWR	01-07-2008	DD	01-09-2008	B-SS301172	
DESCRIPTION	MATERIAL	SIZE	DRAWING NUMBER	PROCESS/FINISH	SHEET
OUTLINE	G.A. BRAUN 904888-01	B	SS312046	326T FR. - DR.PR.	1 OF 1

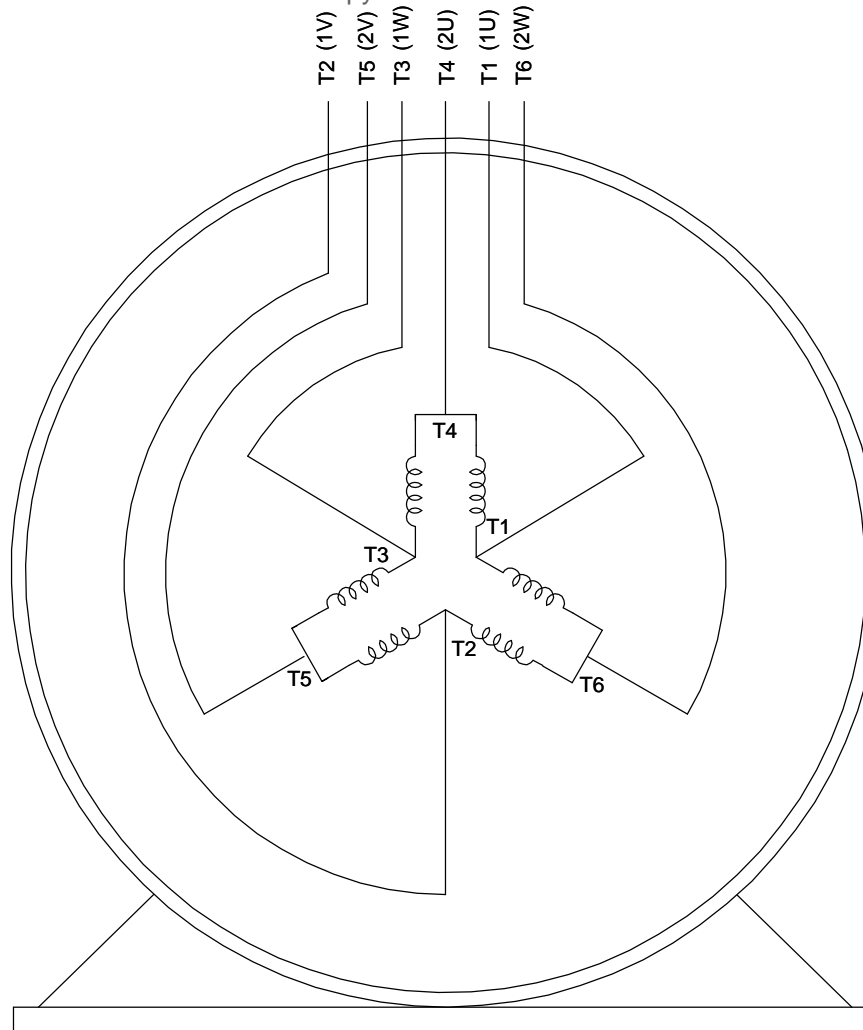
Uncontrolled Copy

**LOW SPEED:**


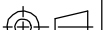
T1 (1U) ————○——— L.1  
 T2 (1V) ————○——— L.2  
 T3 (1W) ————○——— L.3  
 T4 (2U) ————○———  
 T5 (2V) ————○———  
 T6 (2W) ————○———

**HIGH SPEED:**

T4 (2U) ————○——— L.1  
 T5 (2V) ————○——— L.2  
 T6 (2W) ————○——— L.3  
 T1 (1U) ————  
 T2 (1V) ————  
 T3 (1W) ————



**VIEW OF TERMINAL END**

DRAWING REVISION N	REVISION BY TRK	DATE 10-24-2017		DRAWN BY CAV	 Regal Beloit America, Inc.				
ECO ECO-0133089	APPROVED BY MH	DATE 10-24-2017		DATE 05-12-2000					
ECO DESCRIPTION UPDATED TO CURRENT STANDARDS				APPROVED BY GK	DESCRIPTION				
COPYRIGHT REGAL BELOIT AMERICA, INC. ALL RIGHTS RESERVED. PROPRIETARY AND CONFIDENTIAL INFORMATION - THIS DOCUMENT IS THE PROPERTY OF REGAL BELOIT AMERICA, INC. ("OWNER") AND CONTAINS OWNER'S PROPRIETARY INFORMATION. ANY PERSON, CORPORATION OR OTHER FIRM RECEIVING IT IS DEEMED, BY RECEIVING IT, TO AGREE THAT IT, AND/OR ANY PART OF IT, SHALL NOT BE DISCLOSED TO ANY PERSON, CORPORATION OR OTHER ENTITY, DUPLICATED, AND/OR USED, EXCEPT AS EXPRESSLY APPROVED IN WRITING IN ADVANCE BY OWNER. THIS DOCUMENT SHALL BE RETURNED TO OWNER UPON REQUEST. IT MAY BE SUBJECT TO CERTAIN RESTRICTIONS UNDER APPLICABLE EXPORT CONTROL LAWS AND REGULATIONS.				DATE 05-15-2000	CONNECTION DIAGRAM 3Ø 2 SPD. 1 WDG. - C.T. - SGL. VOLT				
				REFERENCE	MATERIAL		PROCESS/FINISH		
				THIRD ANGLE PROJECTION		SIZE A	DRAWING NUMBER EE7324		SHEET 1 OF 1