

PRODUCT INFORMATION PACKET

Model No: 326TTDP17212
Catalog No: 326TTDP17212
20,1800,DP,326TZ,3/60/460,2SPD,1WDG,CT

Regal and are trademarks of Regal Rexnord Corporation or one of its affiliated companies.
©2022 Regal Rexnord Corporation, All Rights Reserved. MC017097E



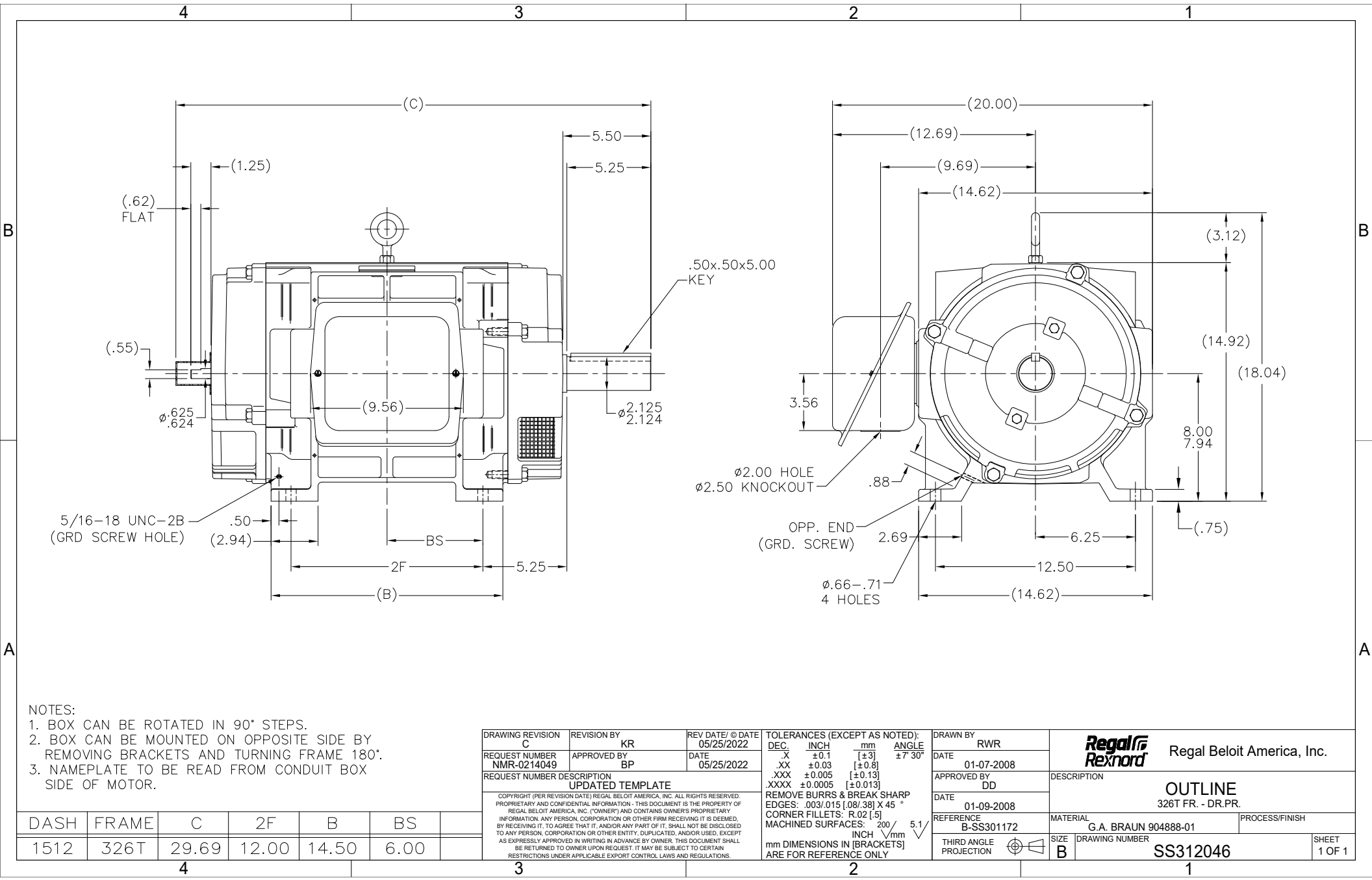
Nameplate Specifications

Output HP	20,10 Hp	Output KW	14.9 kW
Frequency	60 Hz	Voltage	460 V
Current	23.5,19 A	Speed	1710,850 rpm
Service Factor	1	Phase	3
Efficiency	88.5 %	Power Factor	89
Duty	Continuous	Insulation Class	F
Design Code	1CT	KVA Code	J
Frame	326TZ	Enclosure	Drip Proof
Thermal Protection	No Protection	Ambient Temperature	40 °C
Drive End Bearing Size	NU312	Opp Drive End Bearing Size	311
UL	Recognized	CSA	Y
CE	Y	IP Code	12
Number of Speeds	2		

Technical Specifications

Electrical Type	Squirrel Cage Induction Run	Starting Method	Across The Line
Poles	4/8	Rotation	Reversible
Resistance Main	.467 Ohms	Mounting	Rigid Base
Motor Orientation	Horizontal	Drive End Bearing	Roller
Opp Drive End Bearing	Ball	Frame Material	Cast Iron
Shaft Type	Special Extension Both Sides	Assembly/Box Mounting	F1 ONLY
Outline Drawing	B-SS312046-1512	Connection Drawing	A-EE7324

This is an uncontrolled document once printed or downloaded and is subject to change without notice. Date Created:05/26/2022



- NOTES:
1. BOX CAN BE ROTATED IN 90° STEPS.
 2. BOX CAN BE MOUNTED ON OPPOSITE SIDE BY REMOVING BRACKETS AND TURNING FRAME 180°.
 3. NAMEPLATE TO BE READ FROM CONDUIT BOX SIDE OF MOTOR.

DASH	FRAME	C	2F	B	BS	
1512	326T	29.69	12.00	14.50	6.00	
		4	3	2	1	

DRAWING REVISION C	REVISION BY KR	REV DATE/ © DATE 05/25/2022	TOLERANCES (EXCEPT AS NOTED): DEC. INCH mm ANGLE .X ±0.1 [±3] ±7° 30' .XX ±0.03 [±0.8] .XXX ±0.005 [±0.13] .XXXX ±0.0005 [±0.013]	DRAWN BY RWR	Regal Beloit America, Inc.
REQUEST NUMBER NMR-0214049	APPROVED BY BP	DATE 05/25/2022	REMOVE BURRS & BREAK SHARP EDGES: .003/.015 [.08/.38] X 45° CORNER FILLETS: R.02 [.5]	DATE 01-07-2008	
REQUEST NUMBER DESCRIPTION UPDATED TEMPLATE			MACHINED SURFACES: .200 INCH 5.1 mm	APPROVED BY DD	DESCRIPTION OUTLINE
COPYRIGHT (PER REVISION DATE) REGAL BELOIT AMERICA, INC. ALL RIGHTS RESERVED. PROPRIETARY AND CONFIDENTIAL INFORMATION - THIS DOCUMENT IS THE PROPERTY OF REGAL BELOIT AMERICA, INC. (OWNER) AND CONTAINS OWNER'S PROPRIETARY INFORMATION. ANY PERSON, CORPORATION OR OTHER FIRM RECEIVING IT IS DEEMED, BY RECEIVING IT, TO AGREE THAT IT, AND/OR ANY PART OF IT, SHALL NOT BE DISCLOSED TO ANY PERSON, CORPORATION OR OTHER ENTITY, DUPLICATED, AND/OR USED, EXCEPT AS EXPRESSLY APPROVED IN WRITING IN ADVANCE BY OWNER. THIS DOCUMENT SHALL BE RETURNED TO OWNER UPON REQUEST. IT MAY BE SUBJECT TO CERTAIN RESTRICTIONS UNDER APPLICABLE EXPORT CONTROL LAWS AND REGULATIONS.			THIRD ANGLE PROJECTION	DATE 01-09-2008	326T FR. - DR.PR.
				REFERENCE B-SS301172	MATERIAL G.A. BRAUN 904888-01
				SIZE B	DRAWING NUMBER SS312046
					PROCESS/FINISH SHEET 1 OF 1

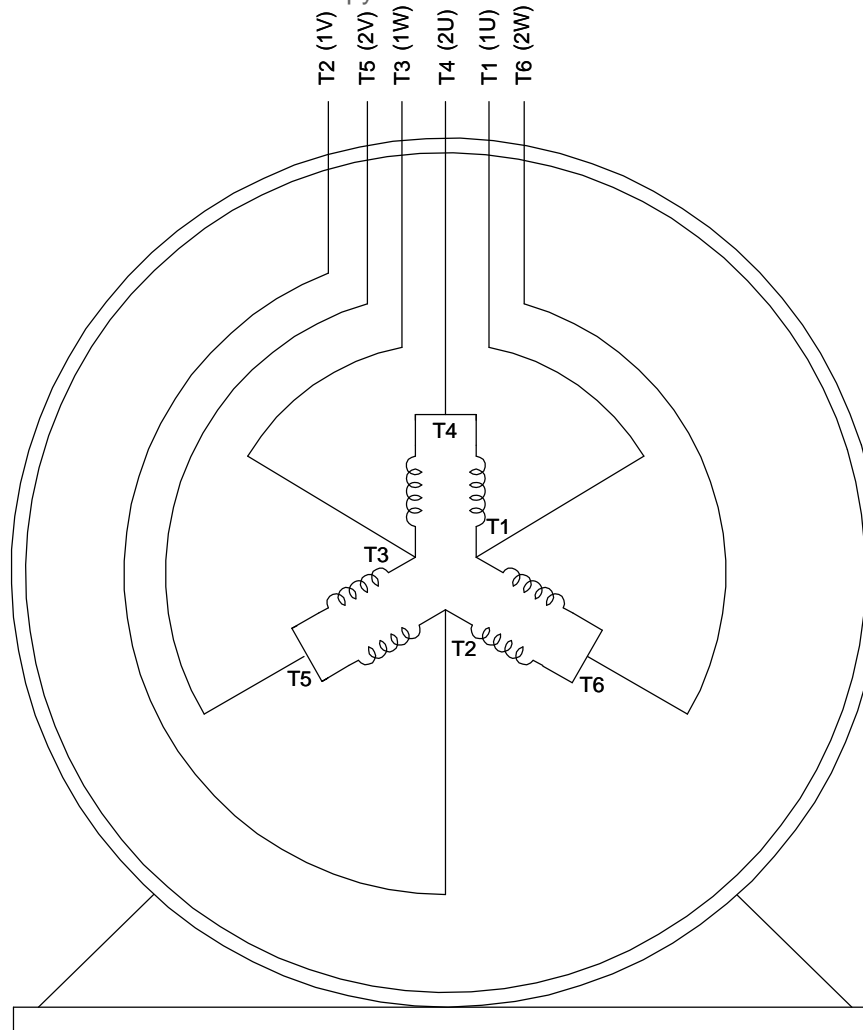
Uncontrolled Copy

LOW SPEED:


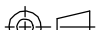
T1 (1U) ————○——— L.1
 T2 (1V) ————○——— L.2
 T3 (1W) ————○——— L.3
 T4 (2U) ————○———
 T5 (2V) ————○———
 T6 (2W) ————○———

HIGH SPEED:

T4 (2U) ————○——— L.1
 T5 (2V) ————○——— L.2
 T6 (2W) ————○——— L.3
 T1 (1U) ————
 T2 (1V) ————
 T3 (1W) ————



VIEW OF TERMINAL END

DRAWING REVISION N	REVISION BY TRK	DATE 10-24-2017		DRAWN BY CAV	 Regal Beloit America, Inc.			
ECO ECO-0133089	APPROVED BY MH	DATE 10-24-2017		DATE 05-12-2000	DESCRIPTION CONNECTION DIAGRAM 3Ø 2 SPD. 1 WDG. - C.T. - SGL. VOLT			
ECO DESCRIPTION UPDATED TO CURRENT STANDARDS				APPROVED BY GK				
COPYRIGHT REGAL BELOIT AMERICA, INC. ALL RIGHTS RESERVED. PROPRIETARY AND CONFIDENTIAL INFORMATION - THIS DOCUMENT IS THE PROPERTY OF REGAL BELOIT AMERICA, INC. ("OWNER") AND CONTAINS OWNER'S PROPRIETARY INFORMATION. ANY PERSON, CORPORATION OR OTHER FIRM RECEIVING IT IS DEEMED, BY RECEIVING IT, TO AGREE THAT IT, AND/OR ANY PART OF IT, SHALL NOT BE DISCLOSED TO ANY PERSON, CORPORATION OR OTHER ENTITY, DUPLICATED, AND/OR USED, EXCEPT AS EXPRESSLY APPROVED IN WRITING IN ADVANCE BY OWNER. THIS DOCUMENT SHALL BE RETURNED TO OWNER UPON REQUEST. IT MAY BE SUBJECT TO CERTAIN RESTRICTIONS UNDER APPLICABLE EXPORT CONTROL LAWS AND REGULATIONS.				DATE 05-15-2000				
				REFERENCE	MATERIAL		PROCESS/FINISH	
				THIRD ANGLE PROJECTION		SIZE A	DRAWING NUMBER EE7324	