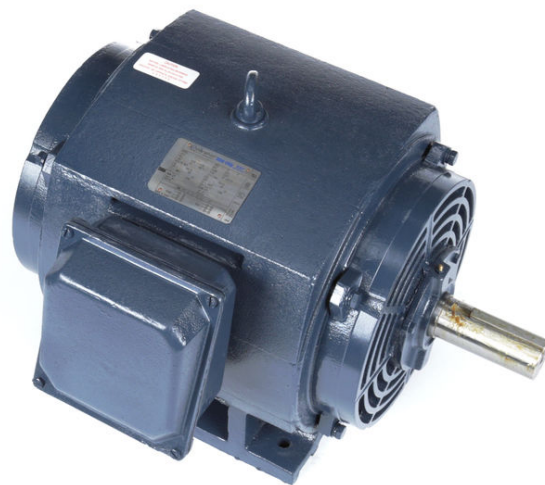


PRODUCT INFORMATION PACKET

Model No: 326TTDC6029

Catalog No: E765A

50 HP General Purpose Motor, 3 phase, 1800 RPM, 575 V, 326T Frame, ODP
General Purpose Motors



Regal and Marathon are trademarks of Regal Rexnord Corporation or one of its affiliated companies.
©2021 Regal Rexnord Corporation, All Rights Reserved. MC017097E



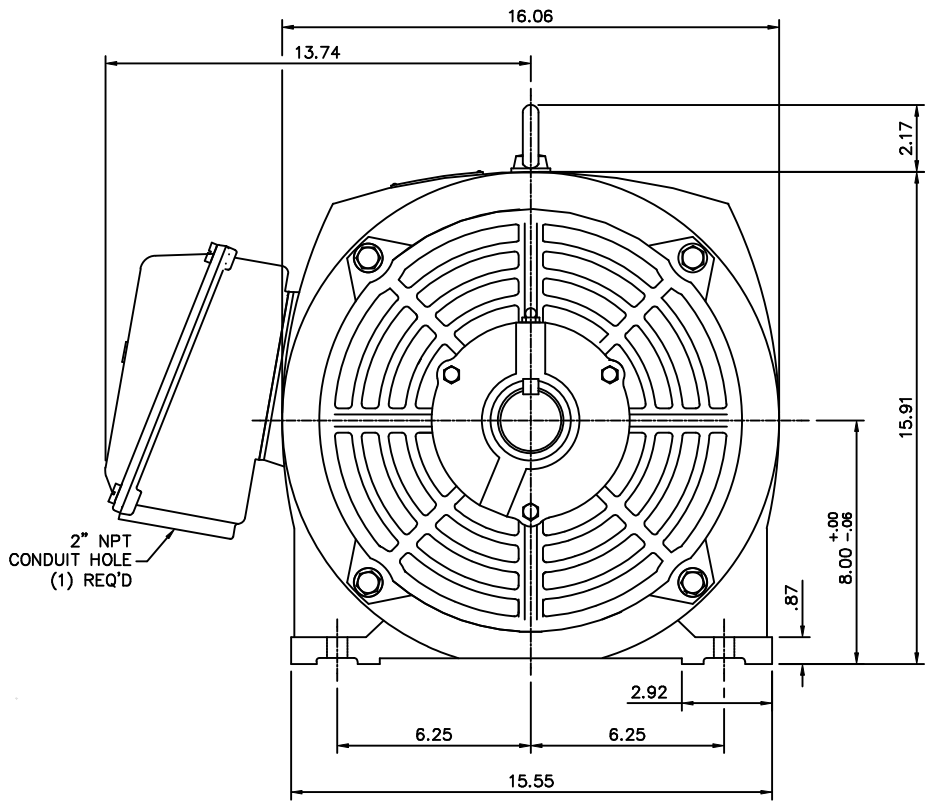
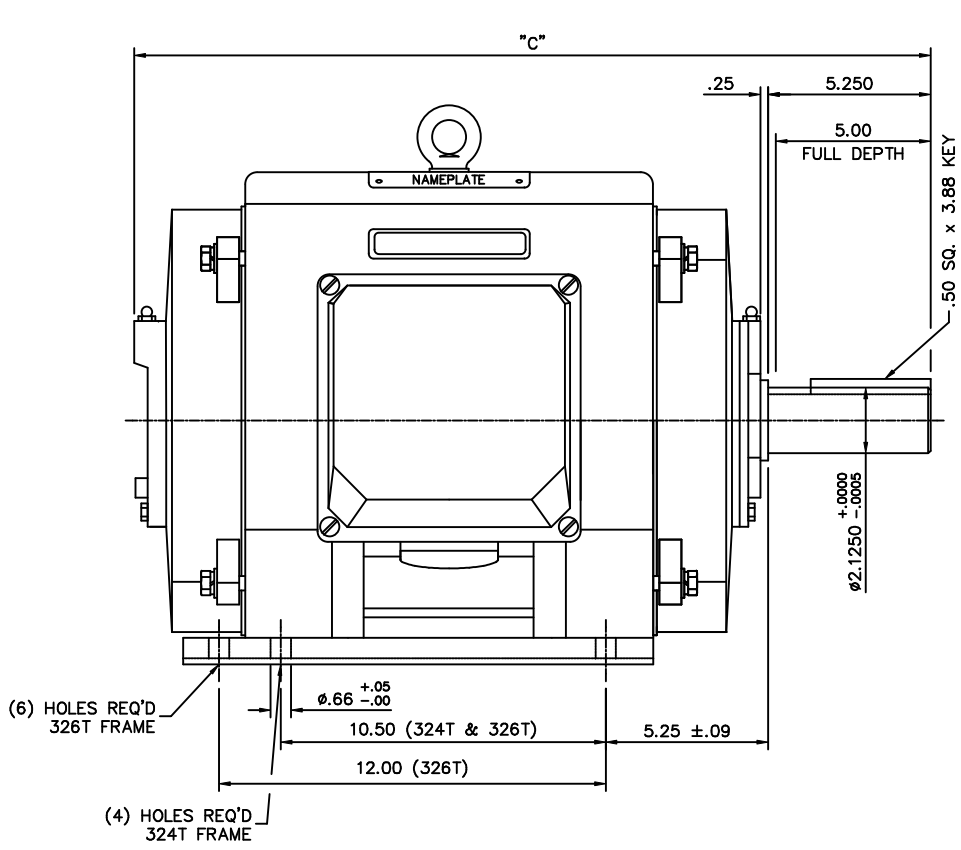
Nameplate Specifications

Output HP	50 Hp	Output KW	37.0 kW
Frequency	60 Hz	Voltage	575 V
Current	47.0 A	Speed	1780 rpm
Service Factor	1.15	Phase	3
Efficiency	94.5 %	Power Factor	84
Duty	Continuous	Insulation Class	F
Design Code	B	KVA Code	G
Frame	326T	Enclosure	Drip Proof
Thermal Protection	No	Ambient Temperature	40 °C
Drive End Bearing Size	6312	Opp Drive End Bearing Size	6312
UL	Recognized	CSA	Y
CE	Y	IP Code	12
Number of Speeds	1		

Technical Specifications

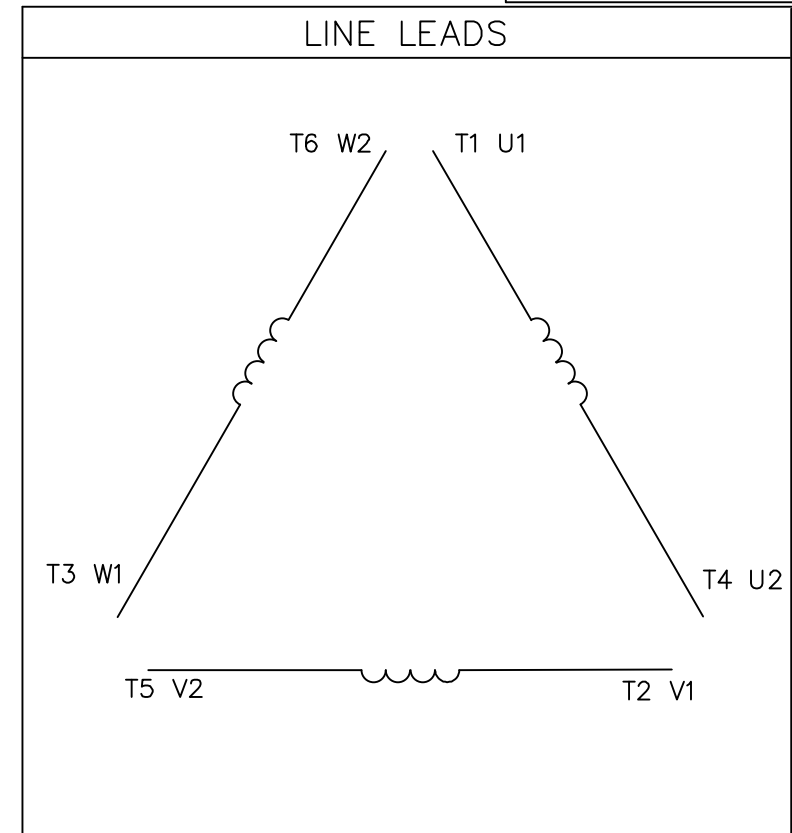
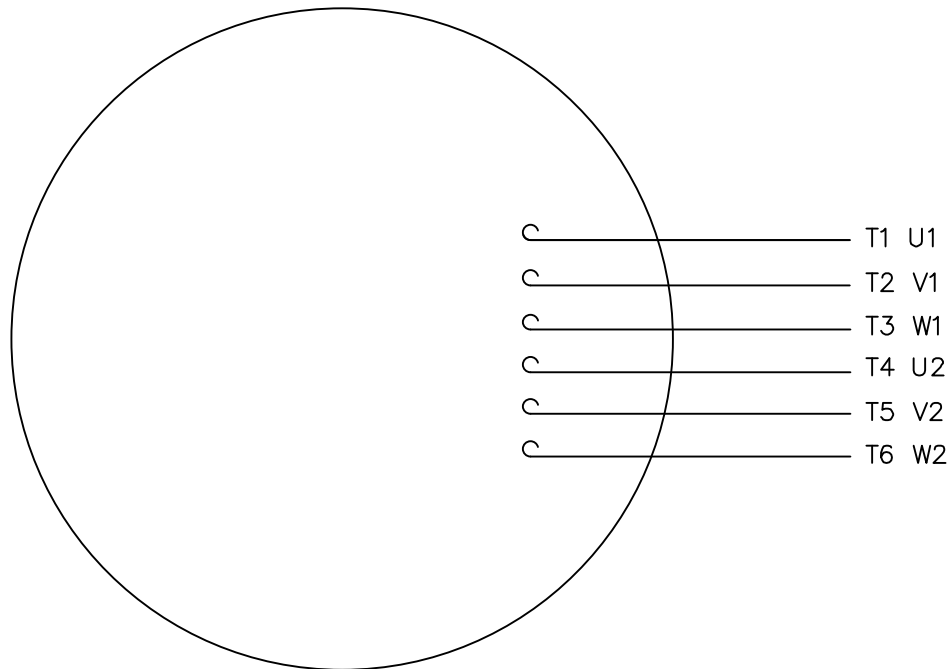
Electrical Type	Squirrel Cage Inverter Rated	Starting Method	Line Or Inverter
Poles	4	Rotation	Reversible
Resistance Main	.133 Ohms	Mounting	Rigid Base
Motor Orientation	Horizontal	Drive End Bearing	Ball
Opp Drive End Bearing	Ball	Frame Material	Cast Iron
Shaft Type	T	Overall Length	27.52 in
Shaft Diameter	2.125 in	Shaft Extension	5.25 in
Assembly/Box Mounting	F1 ONLY		
Outline Drawing	16955460ME	Connection Drawing	00519001ME

This is an uncontrolled document once printed or downloaded and is subject to change without notice. Date Created:10/12/2021



FRAME DESIGN	"C"
324T	26.02
326T	27.52

		TOLERANCES UNLESS SPECIFIED		MARATHON ELECTRIC		DRAWN CTO 04-25-2002			
		DEC.	INCHES			CHK	ML 05-20-2002		
		.X	±.1	TITLE		APPD	SB 05-21-2002		
		.XX	±.03	OUTLINE 320T FRAME		SCALE	1=1		
		.XXX	±.005	DRIP PROOF - RIGID		REF			
1	NEW DRAWING	.XXXX	±.0005	MAT'L		CAST IRON	FMF		
NO.	REVISION	BY & DATE	CHK	ANG	±1/2"	FINISH	PREV		
THIS DRAWING IN DESIGN AND DETAIL IS OUR PROPERTY AND MUST NOT BE USED EXCEPT IN CONNECTION WITH OUR WORK ALL RIGHTS OF DESIGN AND INVENTION ARE RESERVED THIS IS AN ELECTRONICALLY GENERATED DOCUMENT - DO NOT SCALE THIS PRINT				RFP	CAD FILE	16955460me	SIZE	DRAWING NO.	REV.
				DIST			B	169554-60ME	1



	L1	L2	L3	JOIN
START (WYE)	T1 U1	T2 V1	T3 U2	(T4,T5,T6) (U2,V2,W2)
RUN (DELTA)	(T1,T6) (U1,W2)	(T2,T4) (V1,U2)	(T3,T5) (W1,V2)	

				TOLERANCES UNLESS SPECIFIED				DRAWN PG 05/07/82	
				DEC.	INCHES			CHK	
				.X	±.1	TITLE EXTERNAL WIRING DIAGRAM STAR START - DELTA RUN		APPD TEM 05/07/82	
03	ADDED IEC DESIGNATIONS	MOL 04/27/12	.XX	±.01	MAT'L. Y-CONNECTED START - DELTA CONNECTED RUN			SCALE 1=1	
02	REMOVED OBSOLETE STATUS	KJH 06/28/99	.XXX	±.005			FINISH SINGLE VOLTAGE		REF
01	REDRAWN ON CAD	DBT 05/30/97	.XXXX	±.0005	NO. REVISION BY & DATE				FMP
				CHK			ANG	±1/2'	PREV
THIS DRAWING IN DESIGN AND DETAIL IS OUR PROPERTY AND MUST NOT BE USED EXCEPT IN CONNECTION WITH OUR WORK ALL RIGHTS OF DESIGN AND INVENTION ARE RESERVED THIS IS AN ELECTRONICALLY GENERATED DOCUMENT - DO NOT SCALE THIS PRINT				RFP	CAD FILE 00519001ME		SIZE	DRAWING NO.	REV.
				DIST			A	005190-01ME	03

Data Sheet

Date: 16-06-2017
Customer: _____
Attention: _____
Submitted by: FAREEDA DUDEKULA



326TTDC6029

Submittal

Data @ **575 V**

Motor Load Data

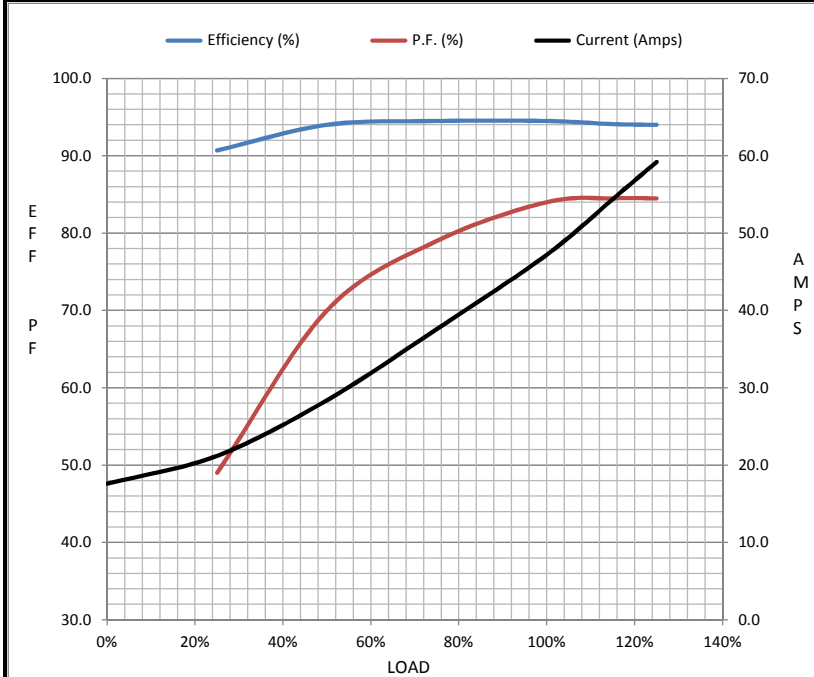
Load	0%	25%	50%	75%	100%	115%	125%	LR
Current (Amps)	17.6	21.2	28.4	37.6	47.2	54.4	59.2	290
Torque (ft-lb)	0.00	37.5	75.0	112	147	170	188	272
RPM	1800	1795	1790	1785	1780	1,777	1775	0
Efficiency (%)		90.7	94.0	94.5	94.5	94.1	94.0	
P.F. (%)	4.5	49.0	70.0	79.0	84.0	84.5	84.5	37.0

Motor Speed Data

	LR	Pull-Up	BD	Rated	Idle
Speed (RPM)	0	900	1675	1780	1800
Current (Amps)	290	260	188	47.2	17.6
Torque (ft-lb)	272	240	410	147	0.00

Information Block

HP	50.0			
Sync. RPM	1800			
Frame	326			
Enclosure	DP			
Construction	TDC			
Voltage	575 V			
Frequency	60 Hz			
Design	B			
LR Code letter	G			
Service Factor	1.15			
Temp Rise @ FL	45 ° C			
Duty	CONT			
Ambient	40 ° C			
Elevation	1,000 feet			
Rotor/Shaft wk ²	0.00 Lb-Ft ²			
Ref Wdg	T16104019 NONE			
Sound Pressure @ 1M	75 dBA			
VFD Rating	CONSTANT 10:1			
Outline Dwg	16955460-ME			
Conn. Diag	5190.01			
Additional Specifications:				
0				
365THFS8036				
EQUIV CKT (OHMS / PHASE)				
R1	R2	X1	X2	Xm
0.0000	0.0000	0.0000	0.0000	0.0000



Speed - Torque Curve

